



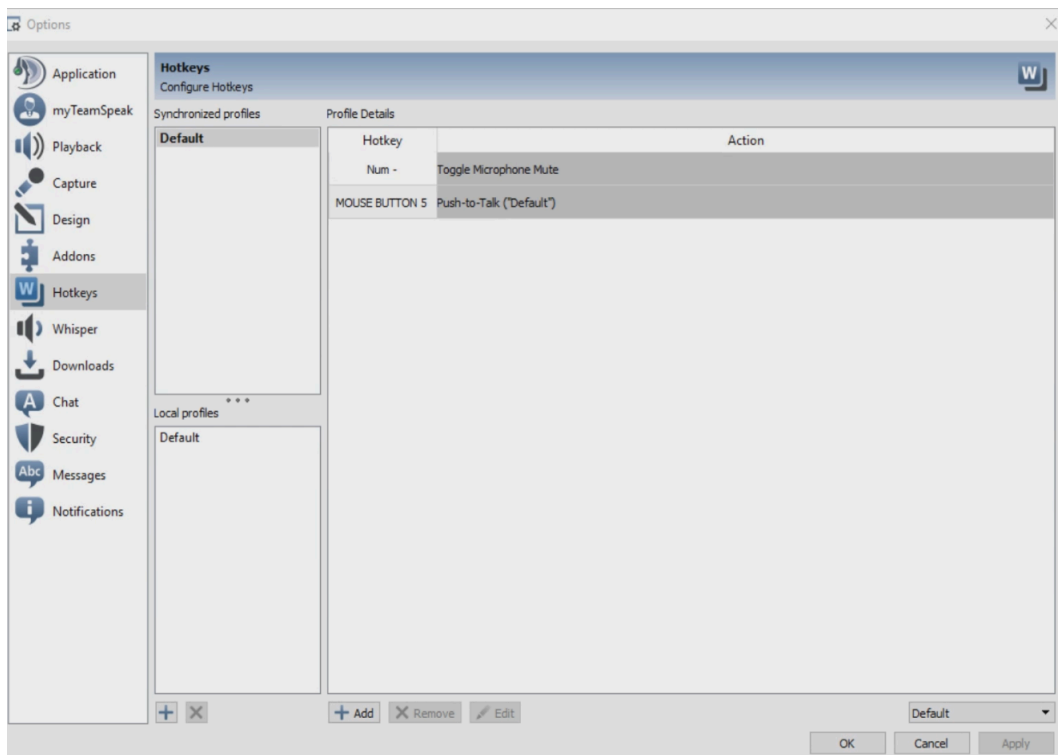
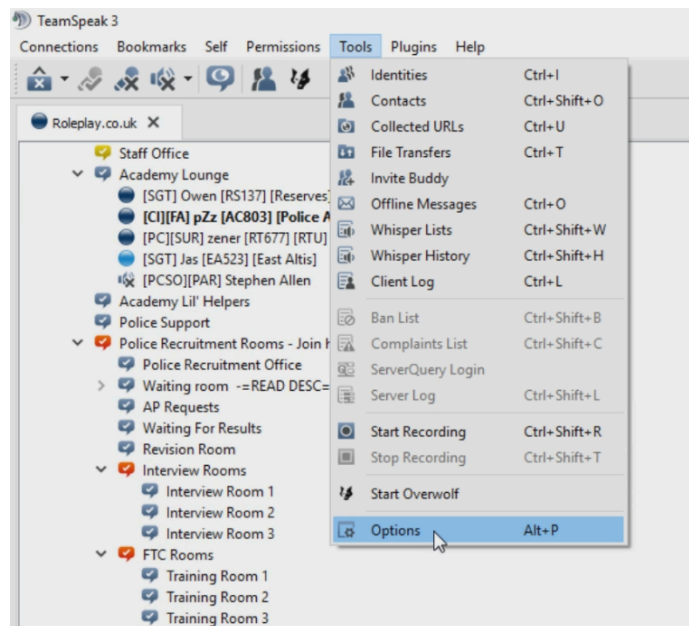
How to set up Whisper Lists for the Police

If you are a new officer, returning officer or someone who has just come back from a long break this document will help you to setup your police whispers. TeamSpeak whispers are what we use to communicate with each other whilst in different channels. It is required for each officer above the rank of 'Police Community Support Officer' (PCSO) to have their whispers set up! Please read this document in order.

If you would prefer to follow a video guide on how to set up your whisper lists click [here](#).

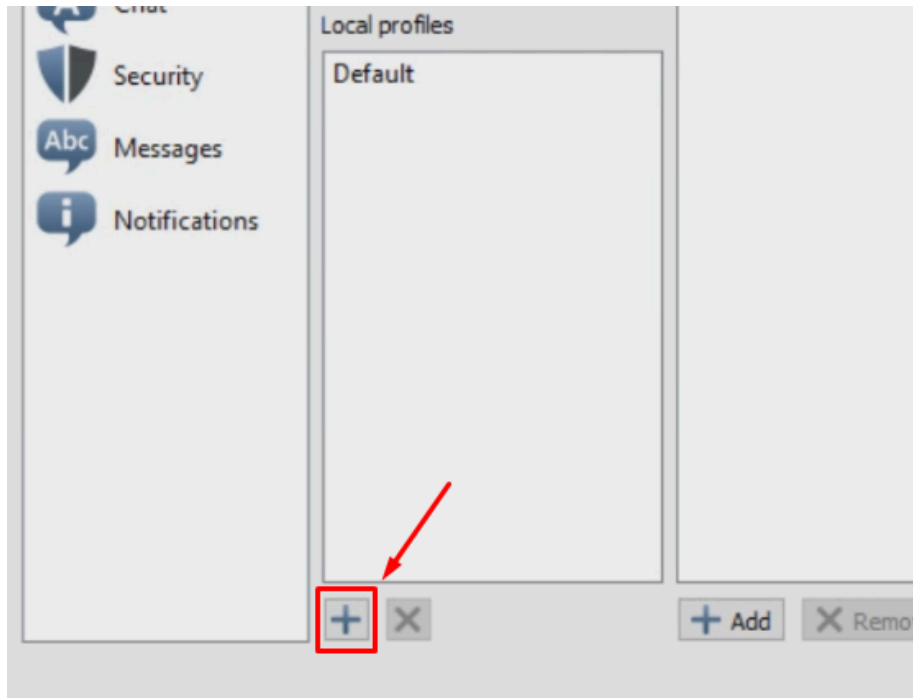
1. Opening the hotkey menu

For starters you need to create two profiles, one for Server 1 and another for Server 2. This can be done by going to “Tools” > “Options” > “Hotkeys”.

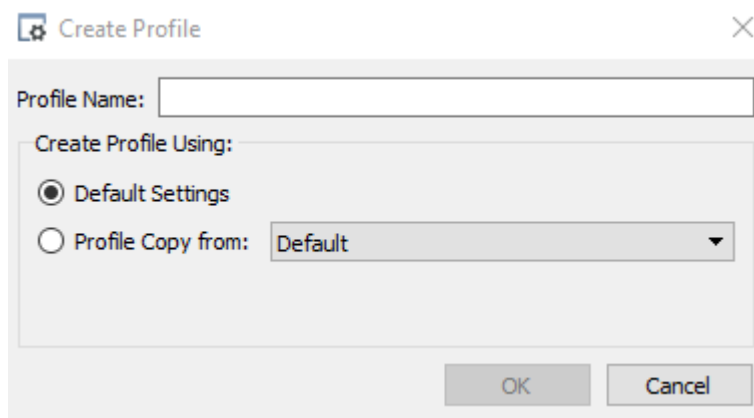


2. Creating a New Profile

As I previously stated, you need to create two profiles, one for Server 1 and one for Server two. Click the “+” button on the bottom to create a new profile. My advice is to create one called “Server 1” and another called “Server 2” just so it is easier to work out which profile is for which server.

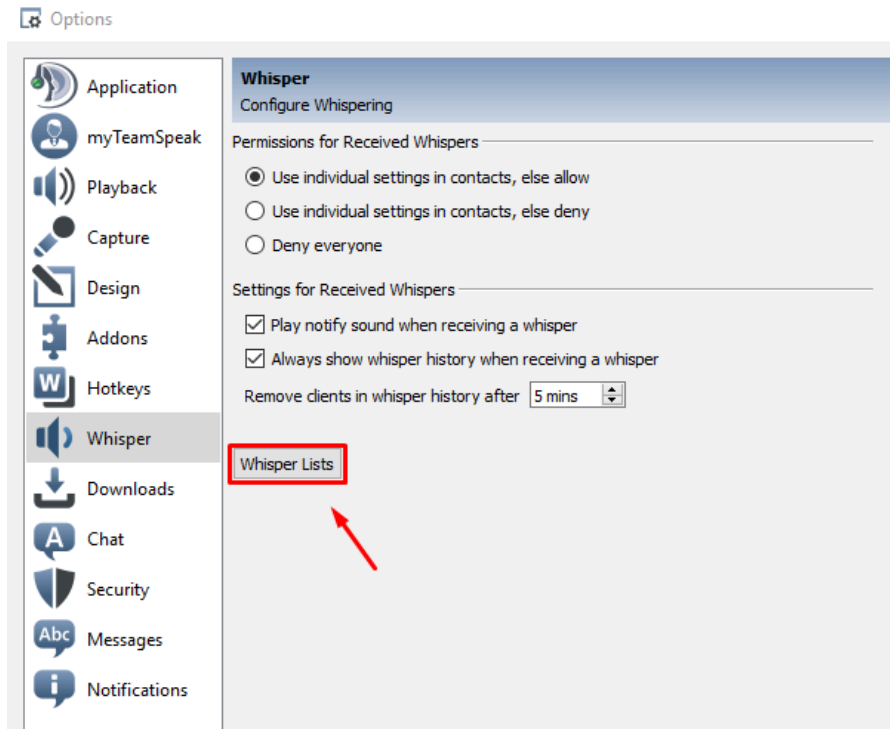


Once you have clicked the “+” button a menu will appear. Simply put the name of the profile. (“Server 1” for Server 1 and “Server 2” for Server 2). After that click “OK”.

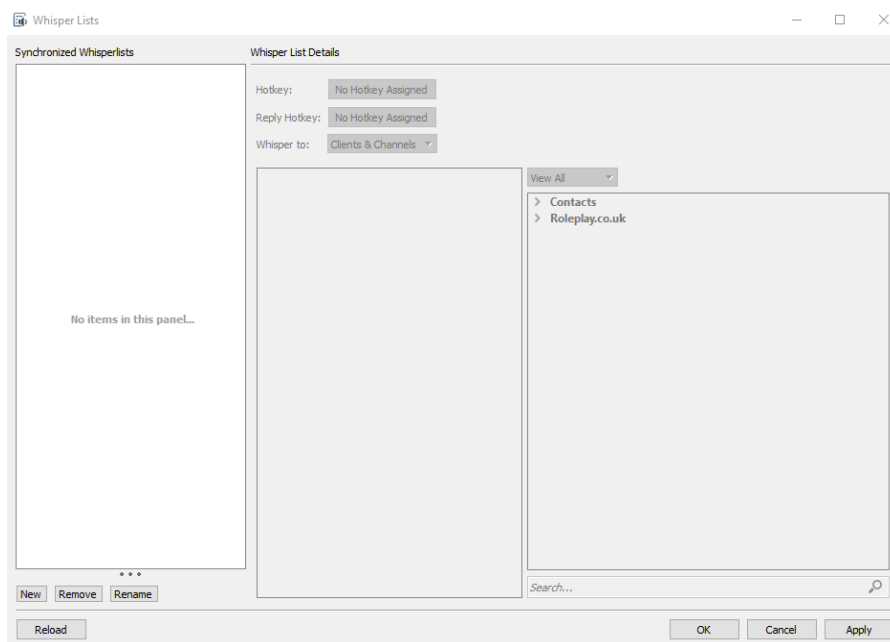


3. Opening the Whisper Menu

To begin creating your whispers you will need to open the whisper menu. This can be done by going to “Tools”, “Options”, “Whisper” and click on a button called “Whisper Lists”.

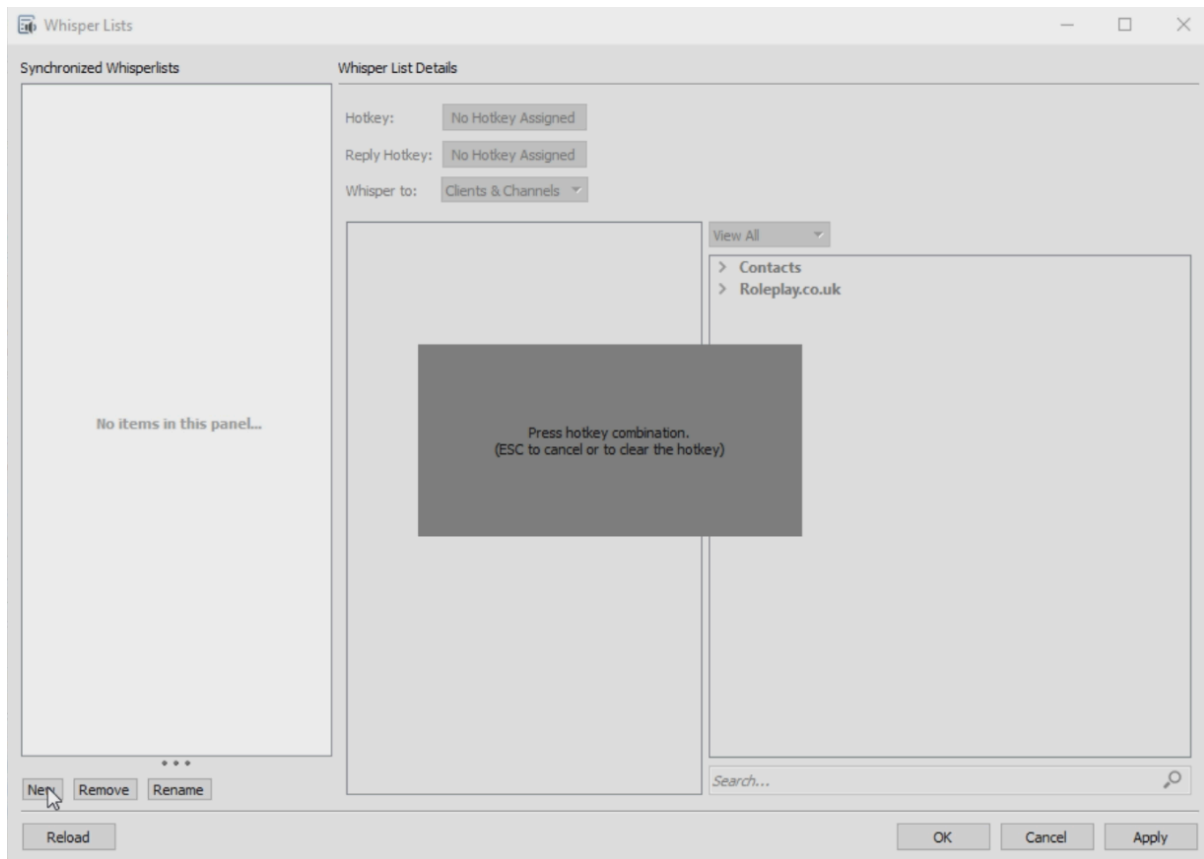


The “Whisper Lists” menu will look something like this.

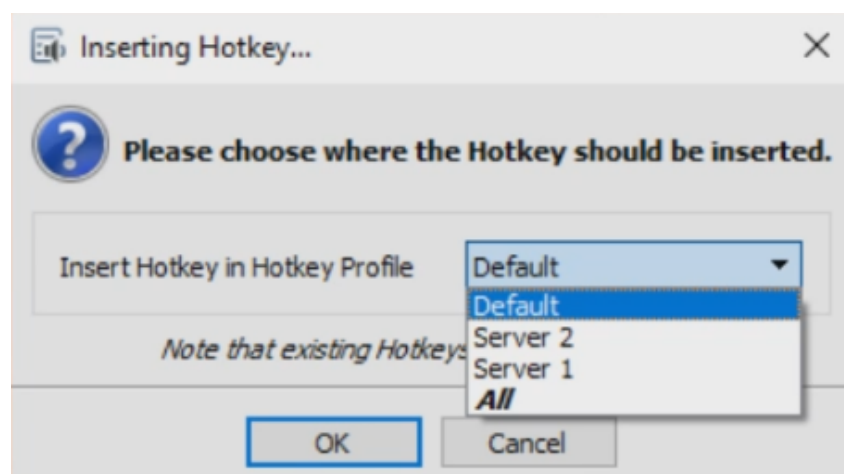


4. Adding Whispers

Once you have opened the “Whisper Lists”, click New and a tab will open which tells you to press any key. I suggest using the Function keys (F1, F2, F3, etc). If it says something about overlapping key bounds, just ignore it and press OK.



After assigning your hotkey you will need to bind it to the profile.



Make sure that you choose the correct hotkey profile otherwise the whispers won't work correctly. If you are creating Server 1 whispers, select Server 1 hotkey profile.

After you set up your hotkeys, you will need to assign them to rooms.

Click on the key, you have selected and on the right hand-side you will see Contacts and Roleplay.co.uk. Click on Roleplay.co.uk and then click Channels. Scroll down to the Police Constabularies until you find "Server 1 Rooms - Altis Life 1".

I made a cheat sheet of the keys I use on the whispers (keep in mind you don't need to use the same as me). When I only write Kavala, for example, I am referring to all Kavala related channels, so Kilo Romeo 1 & 2, Kilo Victor 3 & 4, Kilo Foxtrot and Kilo Intop.

Num Pad

All whisper keys must include <i>TETRA Monitor</i>		
NUM 1	Response channels	Xray Delta 10 + Xray Victor 1-8
NUM 2	Traffic Channels	Xray Romeo 1-4
NUM 3	Firearms Channels	Xray Alpha 1-2
NUM 4	Specialist Ops (INTRA)	NPAS 31-32, Mike Papa 1 & Sierra Papa 1
NUM 5	Specialist Ops (INTER)	November Victor 1-2 & Mike India 1 & 2
NUM 6	Operations	Intop 1-3, General Ops & Specialist Ops
NUM 0	PANIC BUTTON	All Units (All Previous Channels)

Function Keys

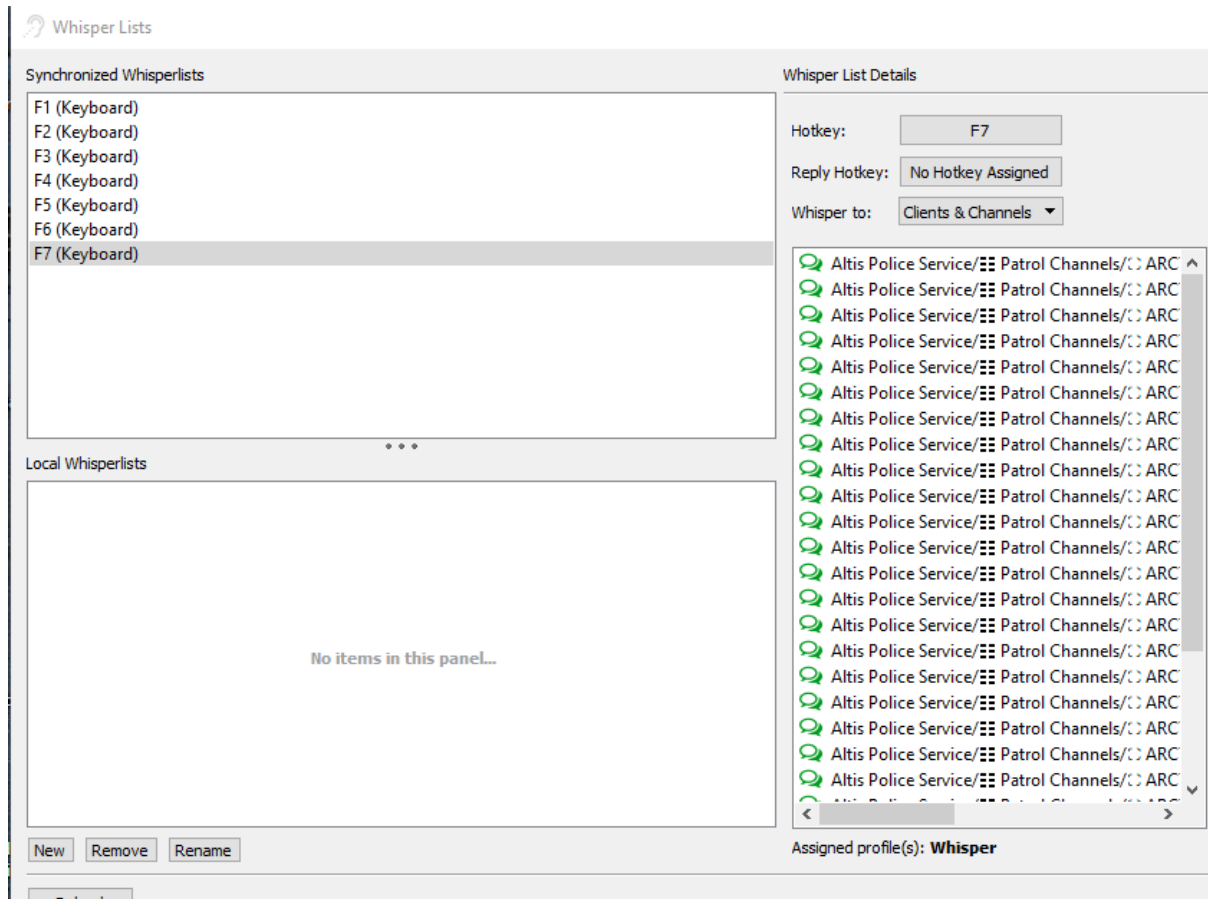
All whisper keys must include <i>TETRA Monitor</i>		
F1	Response channels	Xray Delta 10 + Xray Victor 1-8
F2	Traffic Channels	Xray Romeo 1-4
F3	Firearms Channels	Xray Alpha 1-2
F4	Specialist Ops (INTRA)	NPAS 31-32, Mike Papa 1 & Sierra Papa 1
F5	Specialist Ops (INTER)	November Victor 1-2 & Mike India 1 & 2
F6	Operations	Intop 1-3, General Ops & Specialist Ops
F7	PANIC BUTTON	All Units (All Previous Channels)



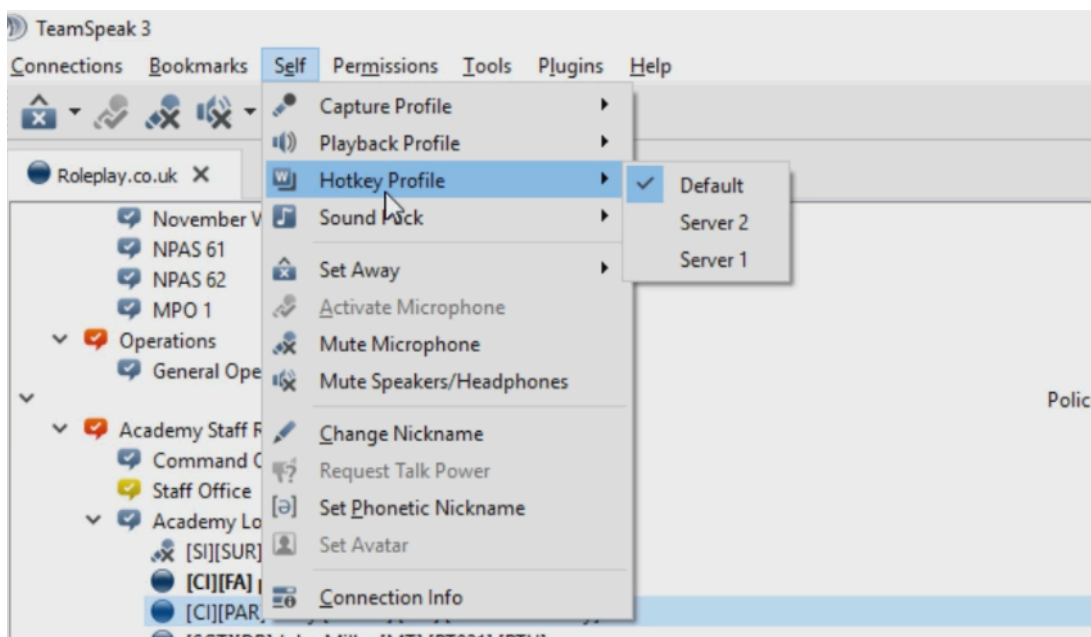
© Tadworth Solutions. All rights reserved.

Airwave, Tadworth Solutions and the Stylized Airwave Logo are trademarks or registered trademarks of Airwave LTD, LLC and are used under license. All other trademarks are the property of their respective owners.

You need to add the channels for both Server 1 and Server 2. After doing so it should look something like the image below.



You have finished the hard part, now you just need to learn how to activate the hotkey profile, to do that you will need to go to “Self” > “Hotkey Profile” > choose the hotkey profile you want to use.



5. Go and patrol

Congratulations, you have just finished setting up the whispers, I recommend writing the hotkeys down in a piece of paper and keeping it with you so you can react fast and respond to situations more efficiently.

You are now safe to go patrol as you are able to communicate with whispers!