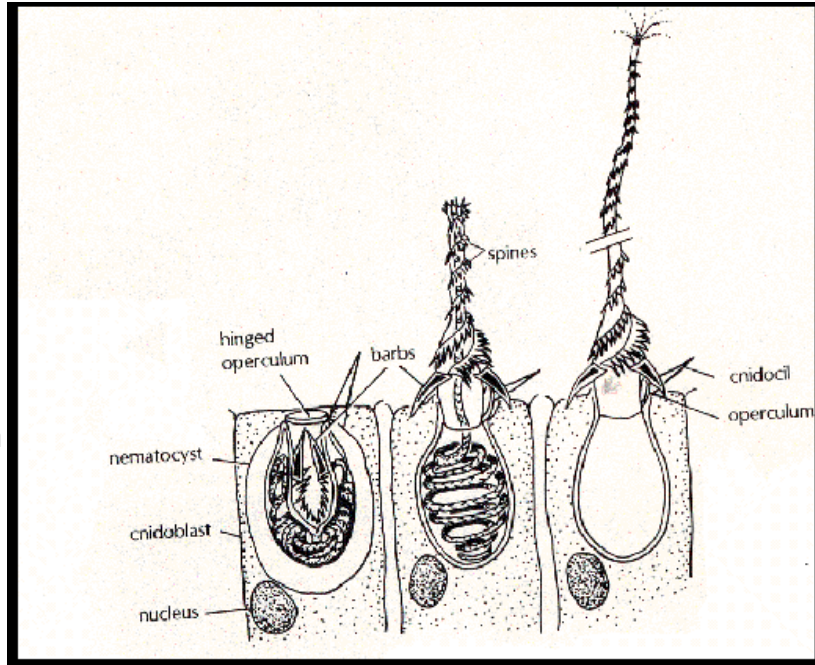


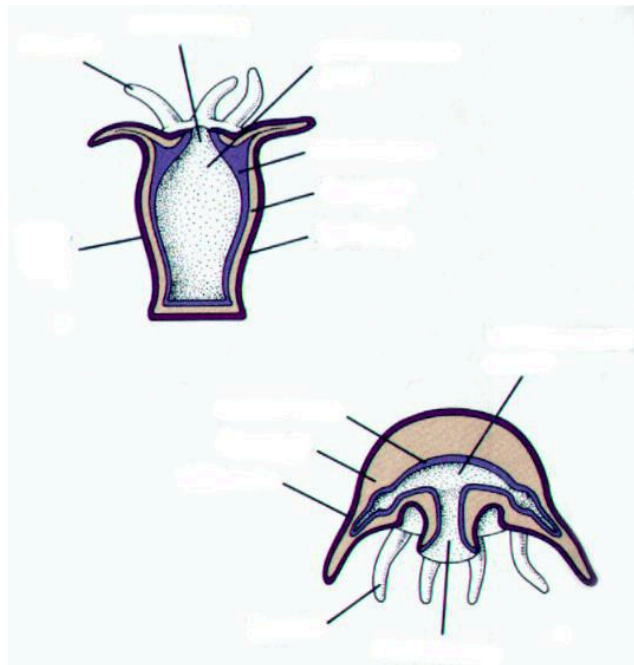
Cnidarians

Cnidarians are a group of animals that include **jellyfish, sea anemones, corals and hydra**. They are two cell layers thick and all contain specialized cells called **NEMATOCYSTS**.

Nematocysts are used to capture prey. These stinging cells are triggered when something in the environment (potential food) brushes by. The nematocyst fires a "spring loaded" dart which harpoons its prey. The dart also contains a poison which paralyzes the prey allowing the cnidarian to feed on the organism.



Cnidarians have a sac-like body form. There are two body forms, the **sessile** polyp and the **motile** medusa. Label the following diagrams (see figure 26-15) and include descriptions of the parts listed below.
 Gastrovascular Cavity: _____



Cnidarians

Epidermis: _____

Gastroderm: _____

Mesoglea: _____

Use your text to determine how the Cnidarians carry out the seven essential life functions.

LIFE FUNCTION	SUMMARY
FEEDING	<u>Feeding:</u> <u>Symbiosis:</u>
RESPIRATION	
INTERNAL TRANSPORT/ CIRCULATION	<u>Digestion</u> (internal transport):
EXCRETION	
RESPONSE	<u>Nerve Net:</u> <u>Statocysts:</u> <u>Ocelli:</u>
MOVEMENT	
REPRODUCTION	<u>Asexual:</u>

Cnidarians

	<u>Sexual:</u>
--	----------------