

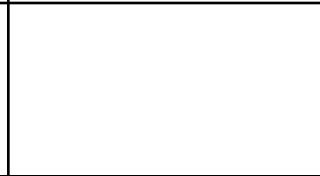
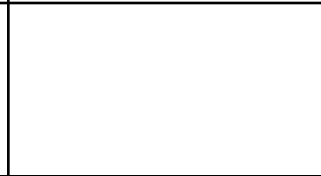
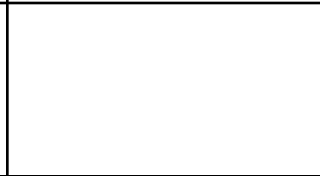
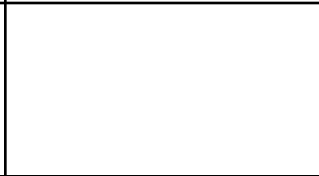
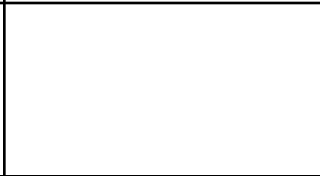
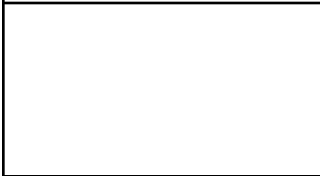
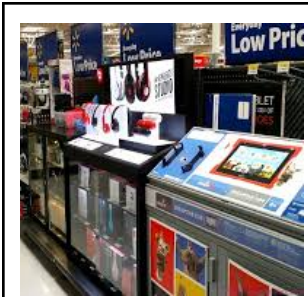
Areas of the Grocery Store Vocabulary Practice Sheet

Parte A. Instructions: Write the word that matches the image./Escribe la palabra que mejor le describe.

the pharmacy	the meat counter	the accessories	the pet section	the shoe department
the customer service department	the entrance	the aisle	the health and beauty department	the dairy department
the bathroom	the fitting room	the seasonal section	the floral department	the electronics department
the clearance section	the exit	the clothing department	the toy section	the produce department
	the frozen section	the deli		the bakery



Parte B. Instructions: Match the term with its definition. / Empareja el término con su definición.

the bakery	where shirts and pants are located
the electronics department	where items that are very cold are stored
the produce department	the door to go into the store
the aisle	where bouquets, vases and balloons are located
the deli	where you pay for the items you want to buy
the pharmacy	where technological items are located
the entrance	where medicine is located
the cash register	where fruits and vegetables are located
the frozen section	the area between the shelves to pass from the front of the store to the back
the floral department	where you find cakes, muffins, donuts, breads and other pastries
the clothing department	where you can find meats, cheese, salads, sandwiches and other items that are already prepared

Parte C. Instructions: Match the term with its definition. / Empareja el término con su definición.

the accessories area	where you try on clothing items
the exit	the area associated with hair and nail care
the shoe department	where pictures are processed
the pet section	the door to leave the store
the vision center	the area to purchase items for a car and/or to have a car repaired
the auto center	the area associated with holiday items
the photo center	the area associated with overall health care
the clinic	where food and other necessities for cats, dogs, birds and other animals are located
the salon	where jewelry, purses, sunglasses and other fashion items are located
the fitting room	the area associated with eye health
the seasonal section	where boots, sandals and other footwear are located