

## **Exercise 1 Create a Custom MMC**

In this exercise, you will create a custom MMC with the Active Directory Users and Computers, Active Directory Schema, and Computer Management snap-ins. These tools are useful for administering Active Directory and domain controllers.

1. Log on to SERVER01 as Administrator.
  2. Click the Start button and, in the Start Search box, type mmc.exe and press Enter. An empty MMC appears. By default, the new console window is not maximized within the MMC. Maximize it to take advantage of the application's full size.
  3. Choose Add/Remove Snap-in from the File menu.
- The Add Or Remove Snap-ins dialog box, shown in Figure 2-3, appears.

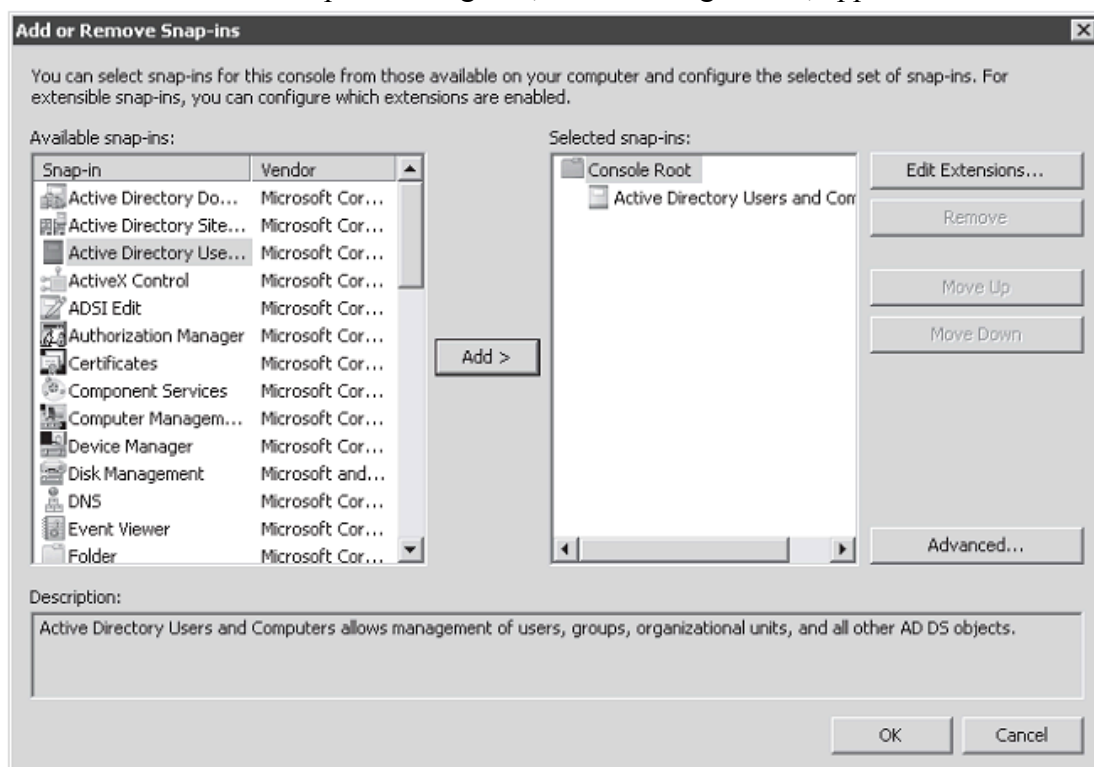


Figure 2-3 The Add Or Remove Snap-ins dialog box

If you do not see the snap-ins listed that you want, be sure you've installed the RSAT.

4. In the Add Or Remove Snap-ins dialog box, select Active Directory Users And Computers from the Available Snap-ins list.
5. Click the Add button to add it to the Selected Snap-ins list. Notice that the Active Directory Schema snap-in is not available to add. The Active Directory Schema snap-in is installed with the Active Directory Domain Services role with the RSAT, but it is not registered, so it does not appear.
6. Click OK to close the Add Or Remove Snap-ins dialog box.

7. Click the Start button. In the Start Search box, type cmd.exe.
8. At the command prompt, type the `regsvr32.exe schmmgmt.dll` command.  
This command registers the dynamic link library (DLL) for the Active Directory Schema snap-in. This is necessary to do one time on a system before you can add the snap-in to a console.
10. Return to your custom MMC and repeat steps 2–6 to add the Active Directory Schema snap-in.
11. Choose Add/Remove Snap-in from the File menu.
12. In the Add Or Remove Snap-ins dialog box, select Computer Management from the Available Snap-ins list.
13. Click the Add button to add it to the Selected Snap-ins list.  
When a snap-in supports remote administration, you are prompted to select the computer you wish to manage, as shown in Figure 2-4.

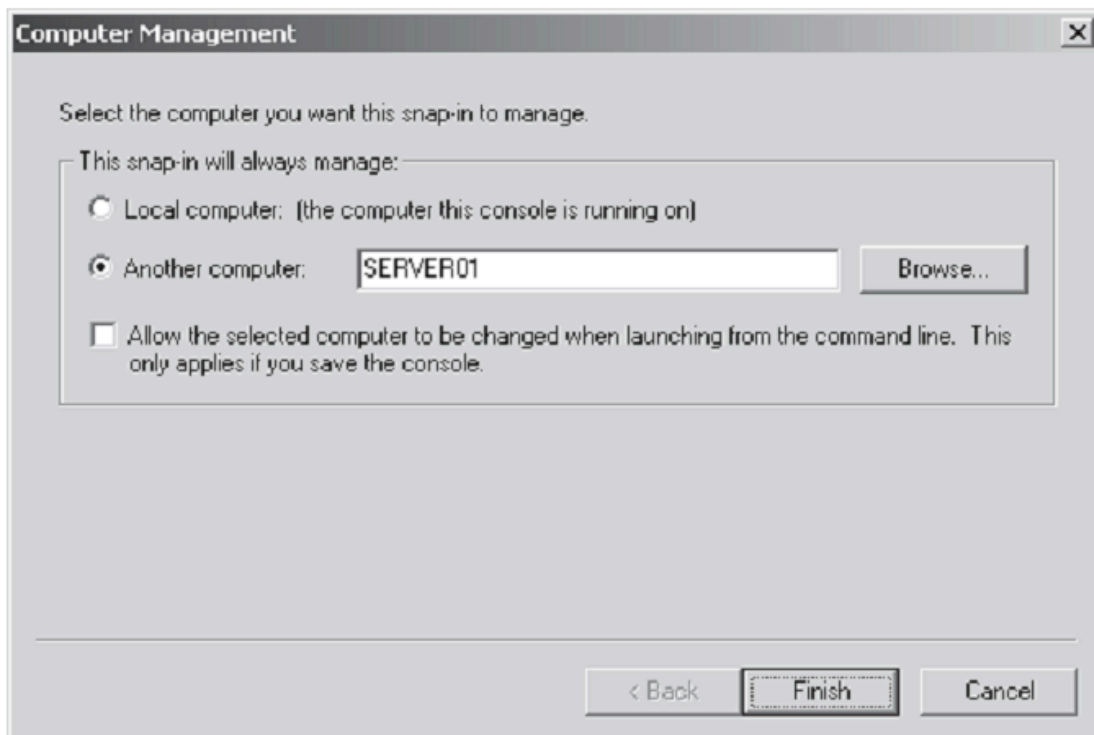


Figure 2-4 Selecting the computer to be managed by a snap-in

- ❑ To manage the computer on which the console is running, select Local Computer. This does not refer solely to the computer on which you are creating the console. If you launch the console from another computer, the console will manage that computer.
  - ❑ To specify a single computer that the snap-in should manage, select Another Computer. Then, enter the computer's name or click Browse to select the computer.
14. Choose Another Computer and type SERVER01 as the computer name.

15. Click Finish.
16. Click OK to close the Add Or Remove Snap-ins dialog box.
17. Choose Save from the File menu and save the console to your desktop with the name MyConsole.msc.
18. Close the console.

### **Exercise 2 Add a Snap-in to an MMC**

In this exercise, you will add Event Viewer to the console you created in Exercise 1. Event Viewer is useful to monitor activity on domain controllers.

1. Open MyConsole.msc.  
If you did not save the console to your desktop in Exercise 1, and instead saved the console to the default location, you will find it in the Start\All Programs\Administrative Tools folder.
2. Choose Add/Remove Snap-in from the File menu.
3. In the Add Or Remove Snap-ins dialog box, select Event Viewer from the Available Snap-ins list.
4. Click the Add button to add it to the Selected Snap-ins list.  
You will be prompted to select a computer to manage.
5. Choose Another Computer and type SERVER01 as the computer name.
6. Click OK.
7. Click OK to close the Add Or Remove Snap-ins dialog box.
8. Save and close the console.

### **Exercise 3 Manage the Snap-ins of an MMC**

In this exercise, you will change the order of snap-ins and delete a snap-in. You will also learn about extension snap-ins.

1. Open MyConsole.msc.
2. Choose Add/Remove Snap-in from the File menu.
3. In the list of Selected snap-ins, select Event Viewer.
4. Click the Move Up button.

5. Select Active Directory Schema.
6. Click the Remove button.
7. In the list of Selected snap-ins, select Computer Management.
8. Click Edit Extensions.  
Extensions are snap-ins that exist within another snap-in to provide additional functionality. The Computer Management snap-in has many familiar snap-ins as extensions, each of which you can enable or disable.
9. Select Enable Only Selected Extensions.
10. Deselect Event Viewer. You have already added Event Viewer as a standalone snap-in for the console.
11. Click OK to close the Extensions For Computer Management dialog box.
12. Click OK to close the Add Or Remove Snap-in dialog box.
13. Save and close the console.

#### **Exercise 4 Prepare a Console for Distribution to Users**

In this exercise, you will save your console in user mode so that users cannot add, remove, or modify snap-ins. Keep in mind that MMC users are typically administrators themselves.

1. Open MyConsole.msc.
2. Choose Options from the File menu.
3. In the Console Mode drop-down list, choose User Mode – Full Access.
4. Click OK.
5. Save and close the console.
6. Open the console by double-clicking it.
7. Click the File menu. Note that there is no Add/Remove Snap-in command.
8. Close the console.
9. Right-click the console and choose Author.
10. Click the File menu. In author mode, the Add/Remove Snap-in command appears.
11. Close the console.

