





## Equivalent Fractions

Explore	Your Task				
  	<table border="1" data-bbox="792 798 1445 1163"> <tr> <td data-bbox="792 798 1117 1003">What do you think of when you hear the word <i>fraction</i>?</td><td data-bbox="1117 798 1445 1003"></td></tr> <tr> <td data-bbox="792 1003 1117 1163">Where do you see fractions in your daily life?</td><td data-bbox="1117 1003 1445 1163"></td></tr> </table>	What do you think of when you hear the word <i>fraction</i> ?		Where do you see fractions in your daily life?	
What do you think of when you hear the word <i>fraction</i> ?					
Where do you see fractions in your daily life?					
Explain	Your Task				
 <p data-bbox="175 1833 760 1934">Image source:  <a href="https://thelearningcounsel.com/article/kahoot-provides-learning-through-creation-educational-games-and-new-understanding-through">https://thelearningcounsel.com/article/kahoot-provides-learning-through-creation-educational-games-and-new-understanding-through</a></p>	<ul style="list-style-type: none"> <li><input type="checkbox"/> Go to <a href="https://kahoot.it">Kahoot.it</a> to test your current knowledge of equivalent fractions.</li> <li><input type="checkbox"/> Enter the game PIN on displayed on the board.</li> </ul>				

## Apply

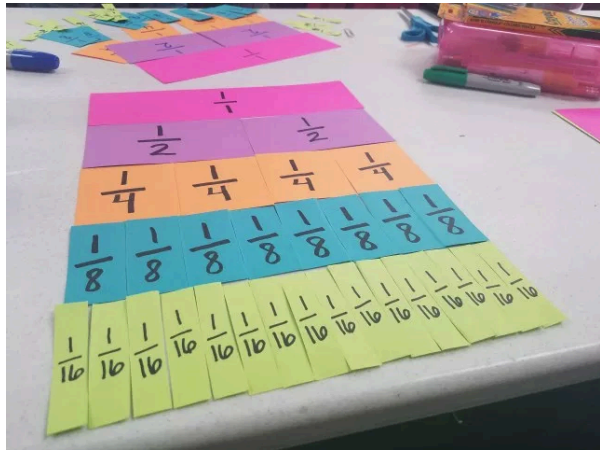


Image source:

<https://lessonsandlattes.com/2017/11/25/how-to-make-a-fraction-kit/>

## Your Task

### Create Your Own Fraction Kit

- ☐ Watch the [Math Mashup video](#) and make your own Fraction Kit using construction paper, scissors, and markers.
- ☐ Complete the [Fraction Kit Worksheet](#) using your kit.
- ☐ We will go over the correct answers as a class.

## Extend

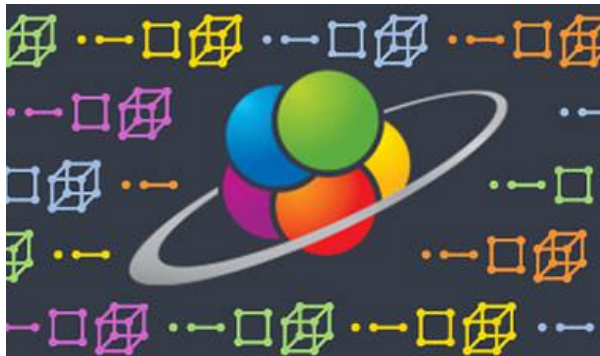


Image source:

<https://www.edx.org/school/schoolyourself>

## Your Task

### Create Your Own Fraction Kit

- ☐ Go to [SchoolYourself.org](https://www.schoolyourself.org) and complete the *Intro to Fractions* lesson.
- ☐ If you complete the *Intro to Fractions* lesson, continue until you have finished the *Fractions* unit.