

**(WRITE THE TITLE OF YOUR PAPER IN ENGLISH HERE, MAXIMUM OF 12 WORDS, TIMES NEW ROMAN 12 pt, BOLD, ITALIC)**

Author name <sup>a)</sup>, Author name <sup>b)</sup>

<sup>a)</sup> affiliations....., City....., Country.....

<sup>b)</sup> affiliations....., City....., Country.....

<sup>\*)</sup>Corresponding Author: .....@email.ac.id

---

**Keywords:**

*Maximum Five  
keyword*

---

**Abstract**

*The title 'Abstract' should be written in size 11pt, bold, Title Case letters. Abstract should include purpose, method, and result of the research. Abstract text should be written in size 10pt, 120 words in one paragraph on a separate sheet. Abstract should be written in Indonesian. The keywords should reflect the concepts contained in the article to facilitate access to the relevant article in the search engines. Title 'keywords' should be written in size 10 pt, bold letters, whereas the keywords are written in italic letters*

---

**INTRODUCTION**

The introduction should include the background ranging from the general problem to the specific problem, the rationale for the chosen object, previous research related to the problem to be studied, the solution the author offers, contributions such as research gaps (novelty, pioneering, original) proposed method, and expected goal. Everything the author chooses must explain the reasons without leaving any questions for the reader. All pages must be full with no blank or remaining space.

The reference system used is the use of references citations & Bibliography, tools available for Microsoft Word. However, Mendeley or Zetero can also be used. Please quote using paraphrase because direct quotation will be detected as plagiarism. Each quotation must have a valid reference source with priority to scientific journal sources. Make sure that the article submitted is the product of an individual's work, not in the process of being published for another publisher. Each article will be checked for plagiarism using Turnitin or Duplichecker with a maximum tolerance limit of <15%.

## **RESEARCH METHODS**

The research methods used in this research to solve problems include analytical methods. The methods used in the research are written in this section.

## **RESULTS AND DISCUSSION**

This section explains the results and discusses the results obtained from the study and draws similarities and differences between previous studies in terms of methods, data and results. However, explain whether the problem has been successfully researched according to the objectives using the proposed method. This should involve a description of the analysis conducted, causes and benchmarks for success/failure, and a section on steps to be taken as a follow-up process.

This section also describes the results of qualitative and/or quantitative analysis with an emphasis on answers to problems. The contents of this discussion contain everything about the activities carried out in the paper. Starting from concept, design, hypothesis (if any), experiments, observation data, and results from existing observation data.

The content is supported by figures, tables and equations referenced in the manuscript.

### ***General requirements***

The font used is Times New Roman with the style and size as in the example in this template. To optimize pages, try to have an even number of pages.

Pay attention to the use of foreign languages. Use standard Indonesian for scientific varieties. If you use a foreign term that has not been absorbed into Indonesian, write it using italics. If the term has been absorbed into Indonesian or is common in Indonesian, such as monitor, you don't need to write it in italics.

### ***Table***

Make sure each table has a sequential number and title. The table is aligned left. Also pay attention to the font used in Table 1' (the table is written with a big 'T').

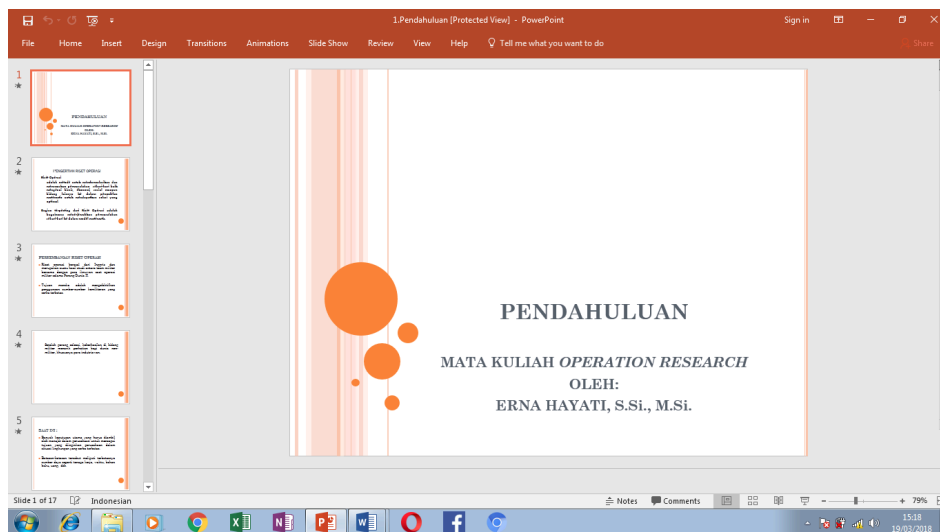
**Table 1.** Table title, using sentence case (large initial letter)

No	Baris ini	bold
1.		

Fill in the table, if it is not enough, you can reduce the font size to font 8. Make sure the table is not cut off on a different page, unless the size exceeds one page. If you have to cut it off, don't forget to rewrite the header row for each column, giving it the same table sequence number, and replacing the title with Continued. The table title does not end with a period. Tables with a width of more than 1 column must be placed at the beginning or end of the page, while for tables with a width of less than 1 column the placement is free as long as it is placed after the sentence that refers to it.

### Figure

As with tables, make sure each image has a sequential number and title. Make the images you use look like they were made by professionals and don't need to be framed. Make sure to use greyscale images. Use the Title\_Image style for this format. The image is centered. Image titles do not end with a period. For images with a width of more than 1 column, the position of the image must be placed at the beginning or end of the page, while for images with a width of less than 1 column the placement is free. However, this small image should not be placed before the sentence that refers to it, let alone before the title of the paper.



**Figure 1.** Image title, also using sentence case (first letter capital)

## CONCLUSIONS AND SUGGESTIONS

This section involves summarizing the findings without adding any new information from what was stated in the previous section. However, it should not be a verbatim repetition of what was discussed in the results and discussion sections.

Deductions or conclusions are made from the previous description with the addition of argumentative personal opinions. It should also include limitations of the research in the process, theory used. The methods applied, or the generalization of the results that will serve as a basis for further research on the subject serve as a response to the observed Limitations. In addition, the implications of this research should also be included.

## REFERENCES

Daftar pustaka dibuat dengan menggunakan gaya *references citations & Bibliography* dan harus minimal 15 sumber dengan 80% dari jurnal nasional dan internasional. Referensi harus dari 5 tahun terkakhir dan paling disukai 3 tahun.

Daftar rujukan disusun dengan tata cara seperti contoh berikut ini dan diurutkan secara alfabetis.

Ahmad Khotim, D. d. (2014). Analisis Pembentukan Portofolio Optimal dengan menggunakan Model Indeks Tunggal dan Stochastic Dominance. *Jurnal Administrasi Bisnis*.

*Bank Indonesia*. (2012, Mei 25). Retrieved from <http://www.bi.go.id>

Hapsari, L. C. (2013). Analisis Pembentukan Portofolio Optimal dengan Menggunakan Model Markowitz Untuk Saham LQ-45 Periode 2008-2012. *Jurnal Manajemen*.

Hartono, J. (2013). *Teori Portofolio dan Analisis Investasi*. Yogyakarta: BPFE-Yogyakarta.

Husnan, S. (2005). *Dasar-dasar teori Portofolio dan Analisi Sekuritas*. Yogyakarta: AMP YKPN.

Mukodim, S. (2012). Pembentukan Portofolio Saham dengan Model Indeks Tunggal pada Perusahaan Perbankan di Bursa Efek Indonesia . *Jurnal manajemen*.

Rahayu, S. B. (2014). Analisis Pembentukan Portofolio Saham Menggunakan Model Indeks Tunggal Untuk pengambilan k=Keoutusan Investasi. *Jurnal Ekonomi dan Bisnis*.

Syahyunan, S. d. (2013). Analisis Pembentukan Portofolio Optimal Saham dengan Model Indeks Tunggal (Studi pada Saham LQ-45 di Bursa Efek Indonesia). *Jurnal Manajemen*.

Tandelilin, E. (2001). *Analisis Investasi dan Manajemen Portofolio*. yogyakarta: BPFE-Yogyakarta.

*Penulis 1, Penulis 2, et al*

*p-ISSN 2502-3780*

Trihariyanto, R. R. (2013). Analisis Portofolio Optimal Berdasarkan Model Indeks Tunggal (Study kasus pada Saham Syariah di BEI). *jurnal Matematika*.