

Product Datasheet

CW-WZ-0172

2.4G/5.8G External Antenna

Key Features

Frequency:2400-2500MHZ/5150-5850MHZ

SMA Connector

Dimensions:297*13mm



Band (MHz)	
Frequency (MHz)	2400-2500MHZ/5150-5850MHZ
VSWR	≤2.0
Efficiency (%)	95.47%/80.84%
Peak Gain (dBi)	7.29/5.83
Impedance (Ohm)	50

Product Datasheet

Polarisation

Vertical

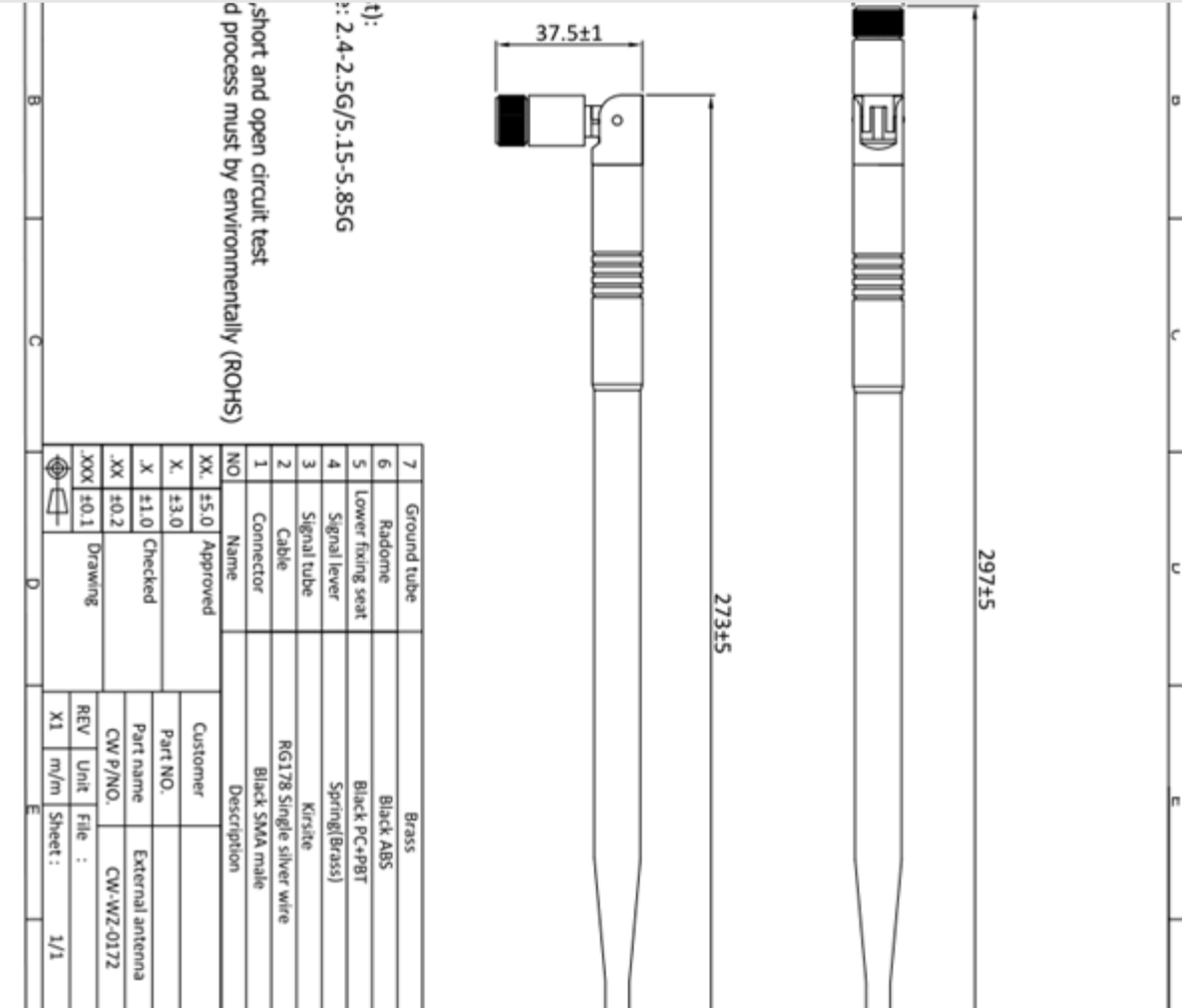
1. Antenna Electrical Characteristics

10

SMA

2. Material and environmental characteristics

External structure	ABS+(PC+PBT)
Inner structure	Signal tube +Signal lever
Cable Type	RG178
Connector Type	SMA
Dimensions (mm)	297*13 MM
Antenna color	Black
Operation Temperature	-40 to +80
Storage Temperature	-40 to +80
Antenna Storage Time (year)	10
Substance Compliance	ROHS

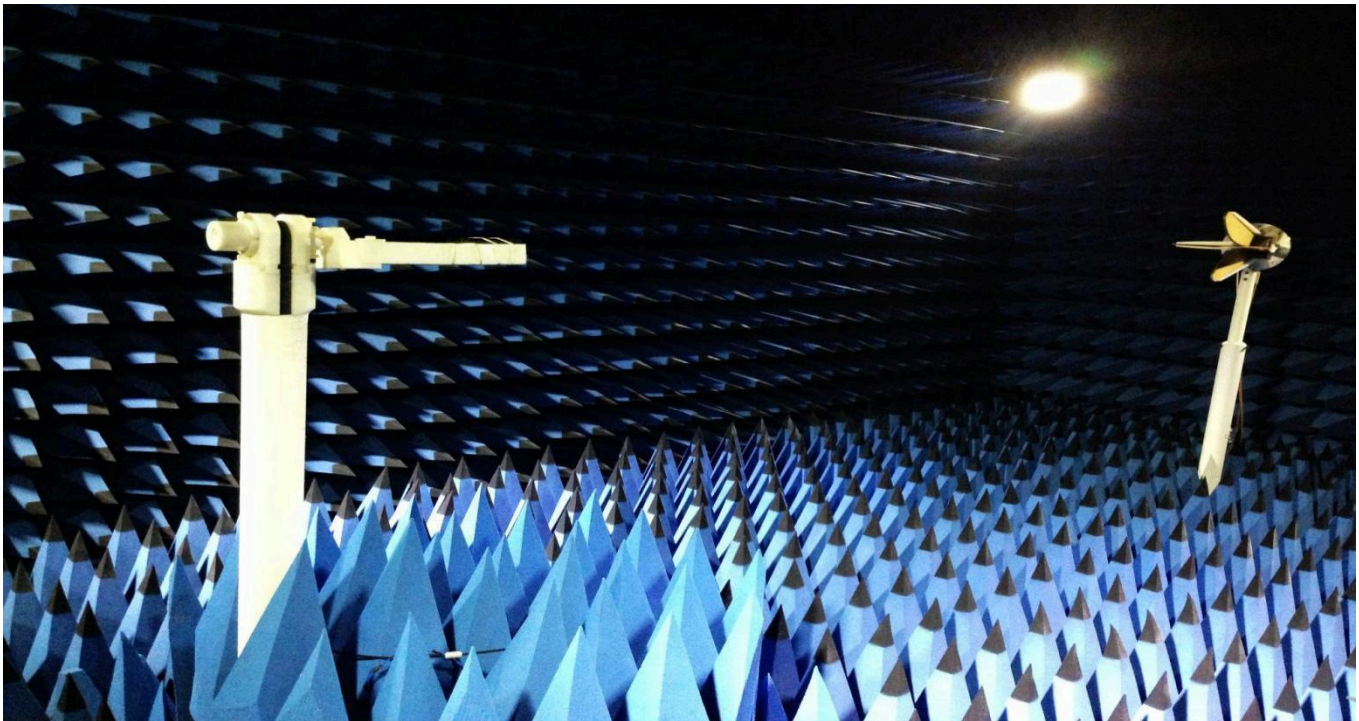


Product Datasheet

4. Antenna test parameters

Antenna Measurement Conditions:

Mounted on Ground Plane of 280 x 80 mm
 Measured in Certified 3D Anechoic Chamber
 The network analyzer is Agilent 5071c
 The comprehensive tester is Agilent cmv500



Trc1 — S11 SWR 1 U / Ref 1 U Cal

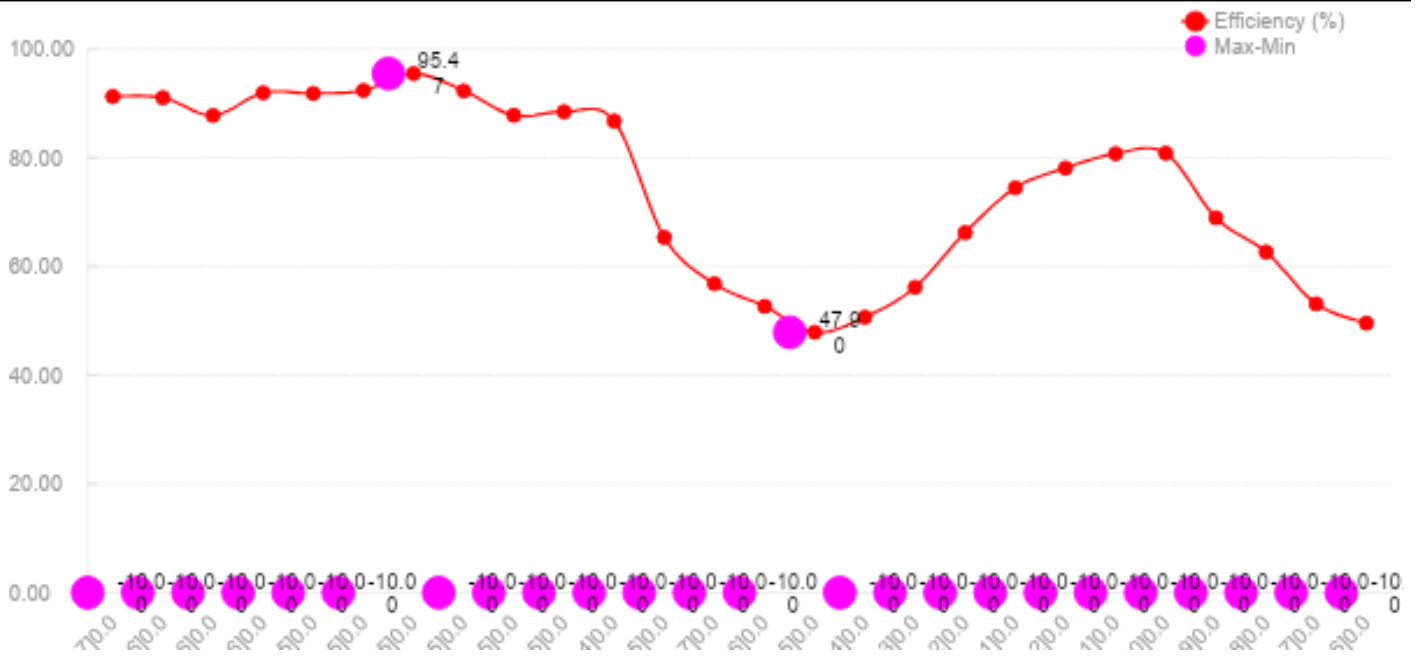
1 (Max)

Trc	Marker	Frequency (GHz)	SWR	Unit
S11	M1	2.400000	1.1337	U
	M2	2.500000	1.7820	U
	M3	5.150000	1.1931	U

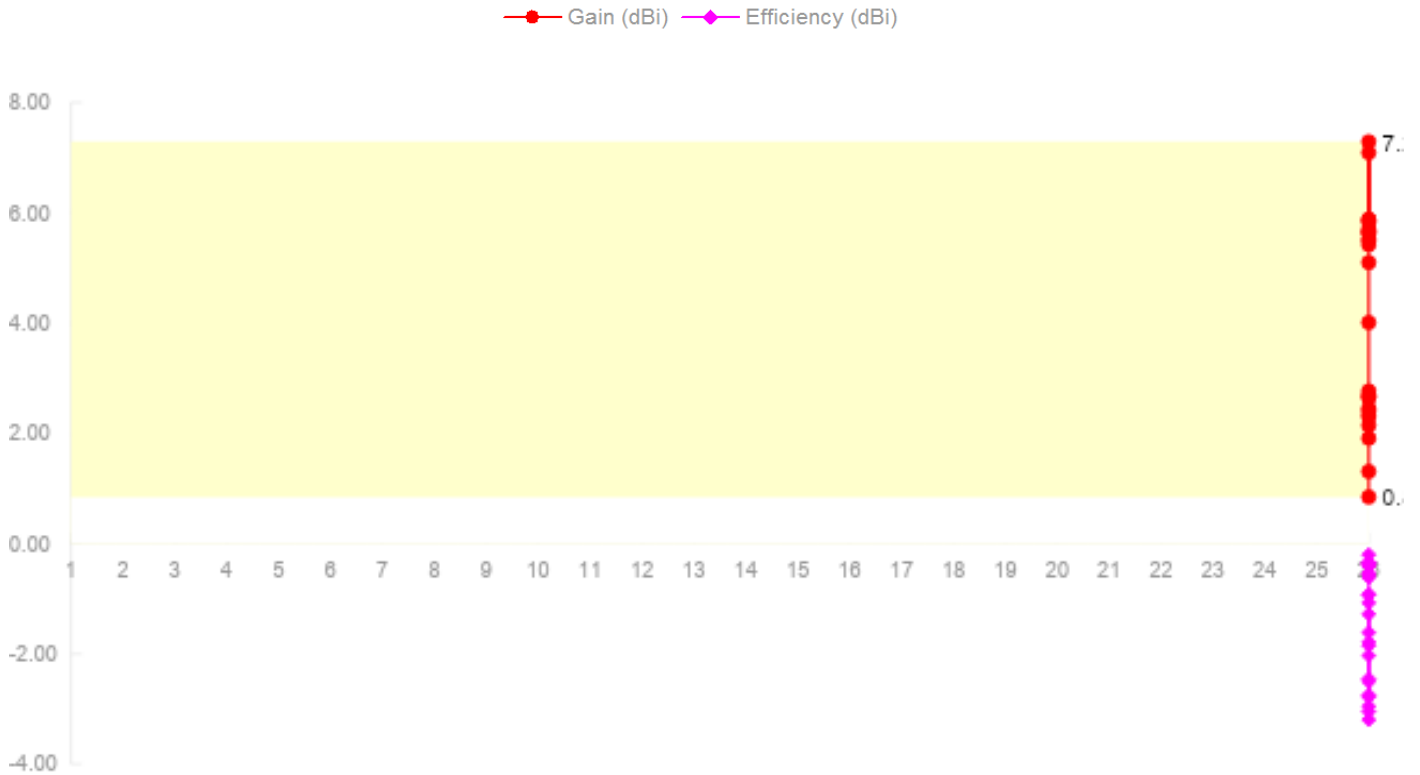
Product Datasheet

4.2 Efficiency

Product Datasheet



4.3 Peak gain

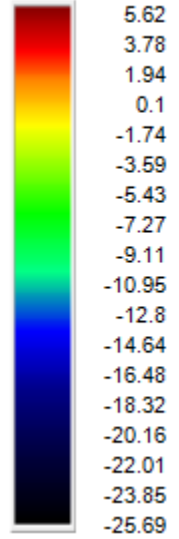
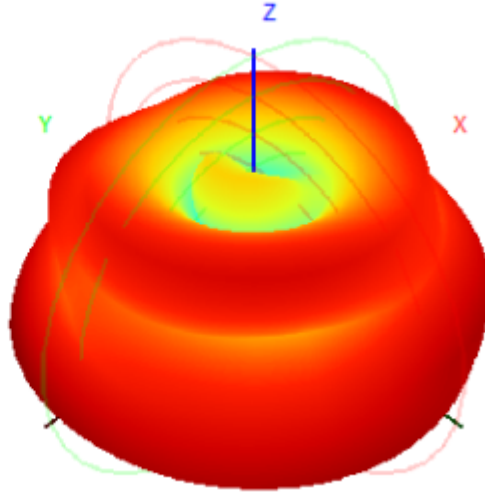
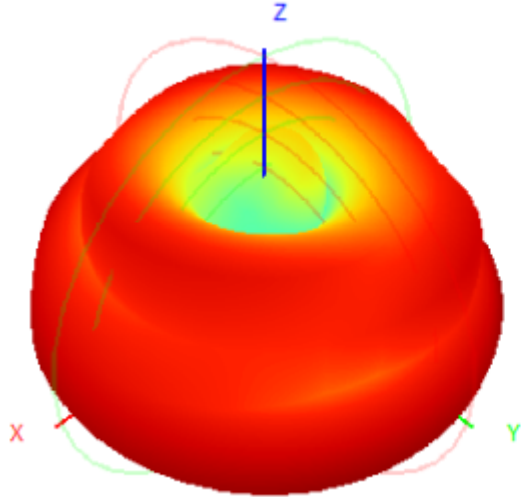


4.4 3D&2D Radiation Patterns

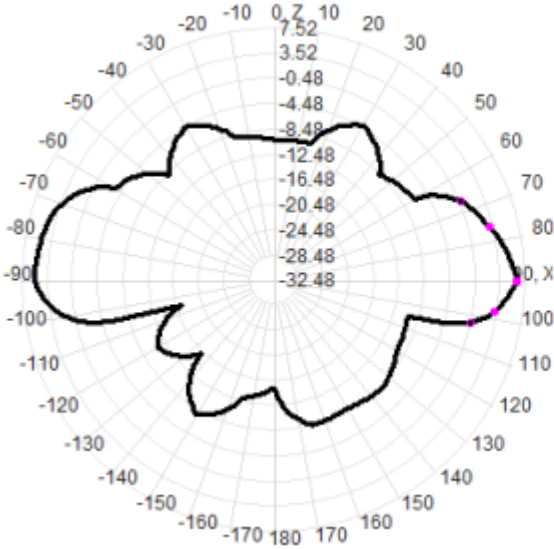
Product Datasheet

2400.0MHz H+V, Eff: 91.3%

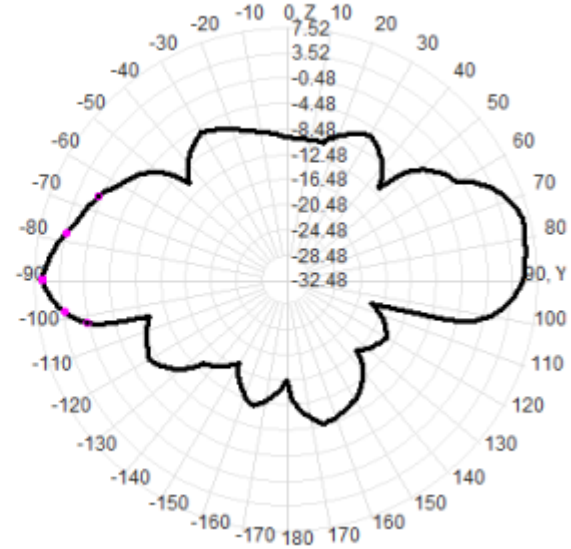
Back View



2400.0MHz Total(E1-XZ), Max= 6.03dBi

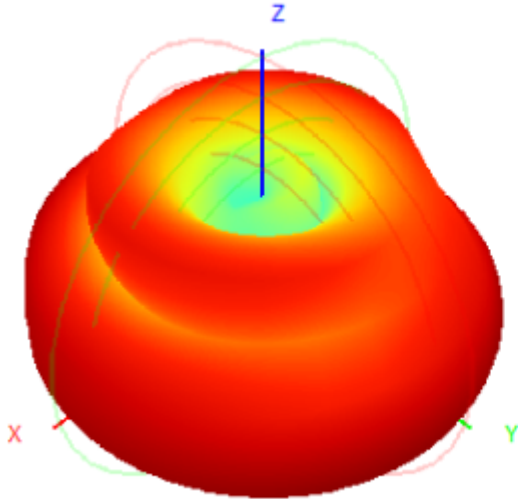


2400.0MHz Total(E2-YZ), Max= 6.29dBi

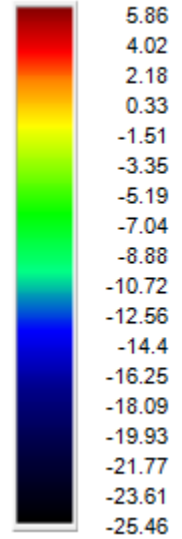
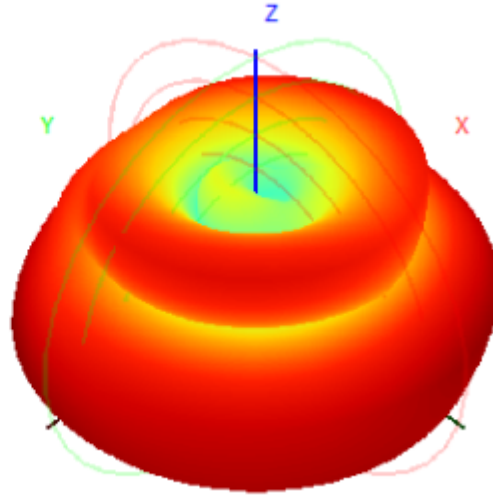


Product Datasheet

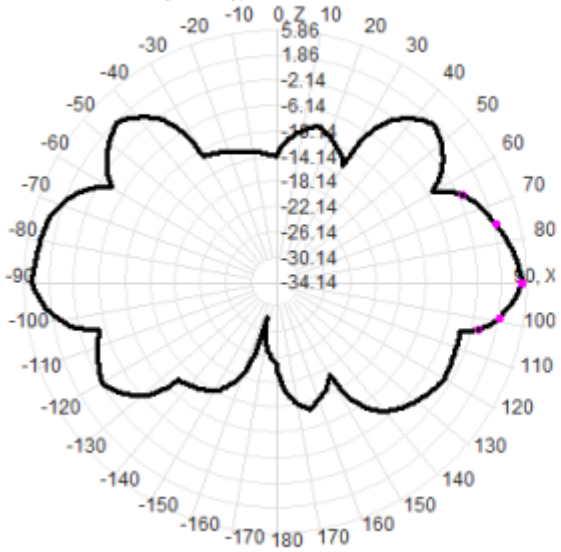
2450.0MHz H+V, Eff: 92.4%



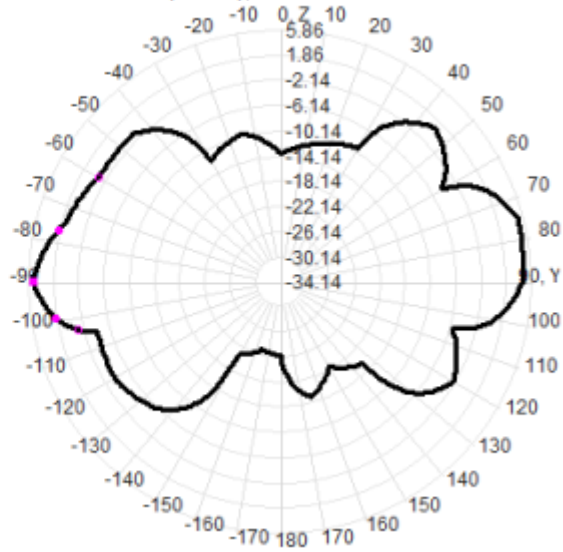
Back View



2450.0MHz Total(E1-XZ), Max= 4.90dBi

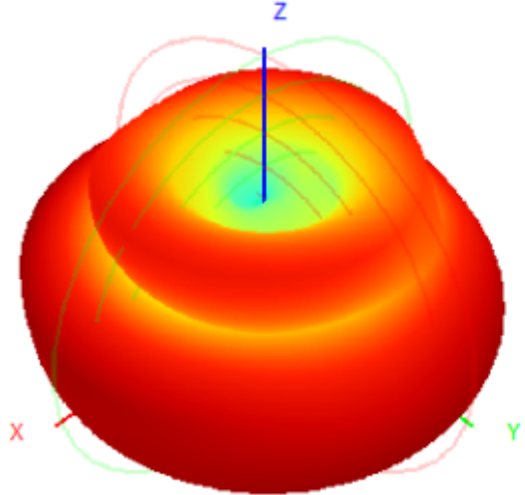


2450.0MHz Total(E2-YZ), Max= 5.10dBi

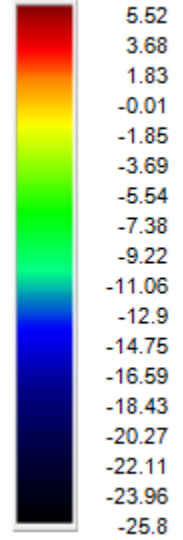
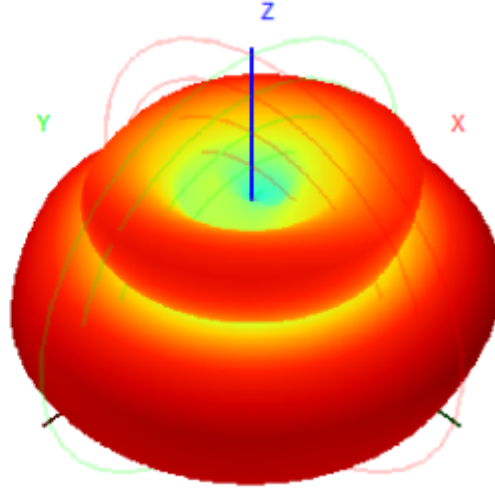


Product Datasheet

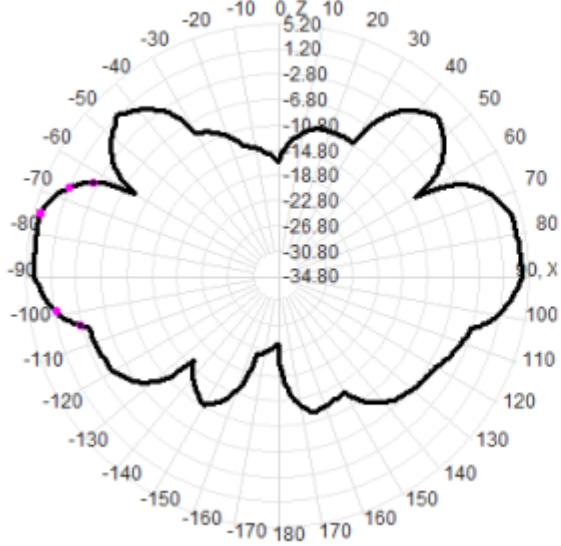
2500.0MHz H+V, Eff: 86.8%



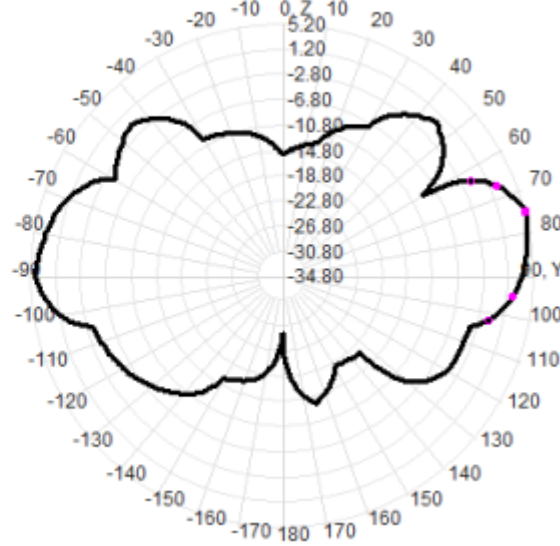
Back View



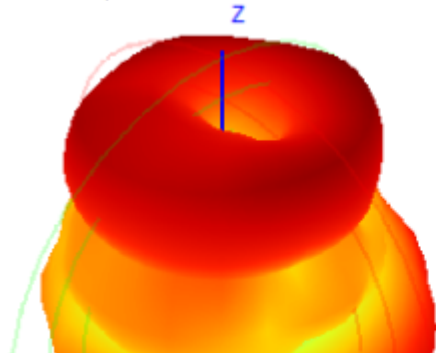
2500.0MHz Total(E1-XZ), Max= 4.22dBi



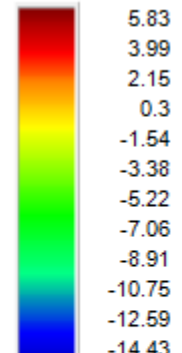
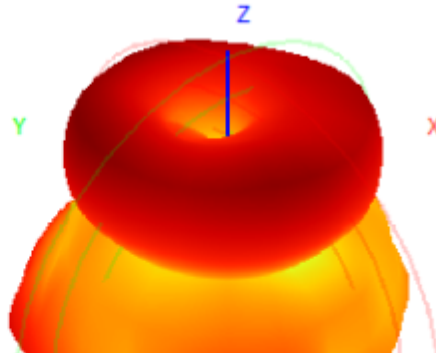
2500.0MHz Total(E2-YZ), Max= 5.09dBi



5150.0MHz H+V, Eff: 65.3%

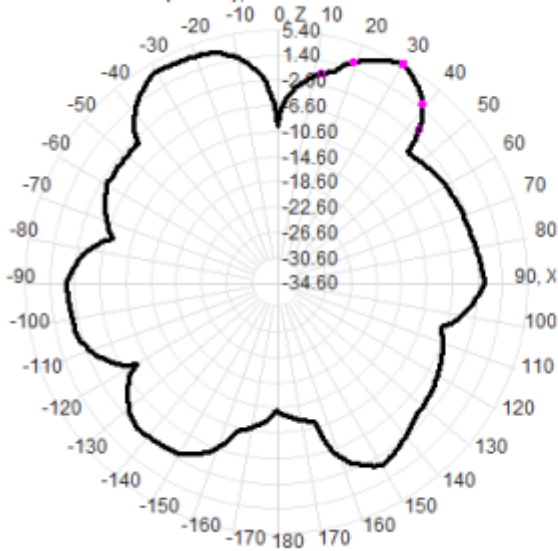


Back View

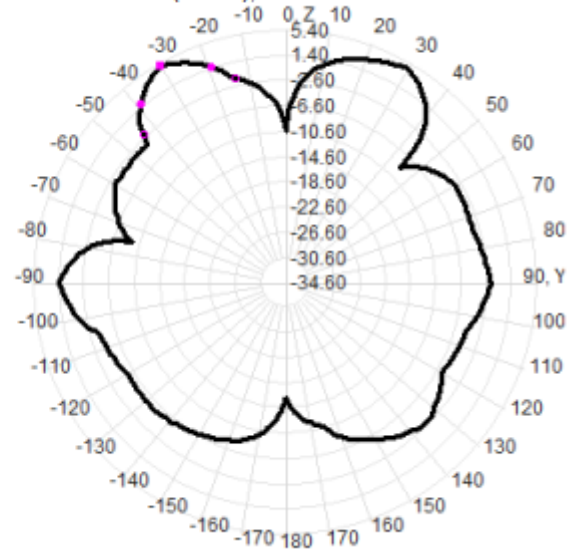


Product Datasheet

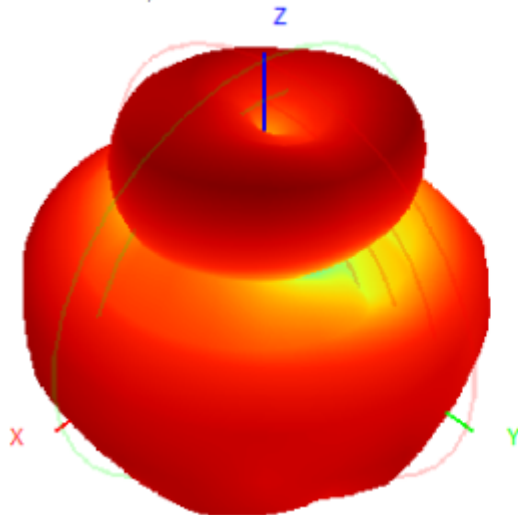
5150.0MHz Total(E1-XZ), Max= 5.40dBi



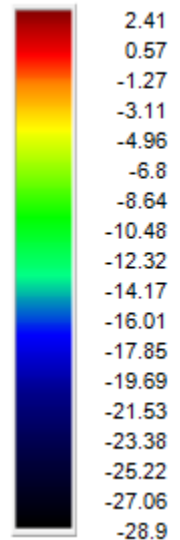
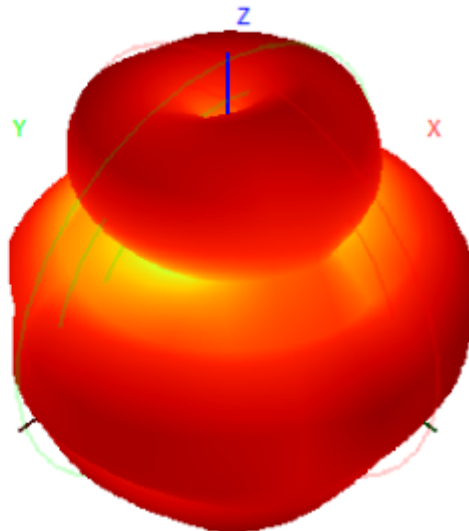
5150.0MHz Total(E2-YZ), Max= 5.00dBi



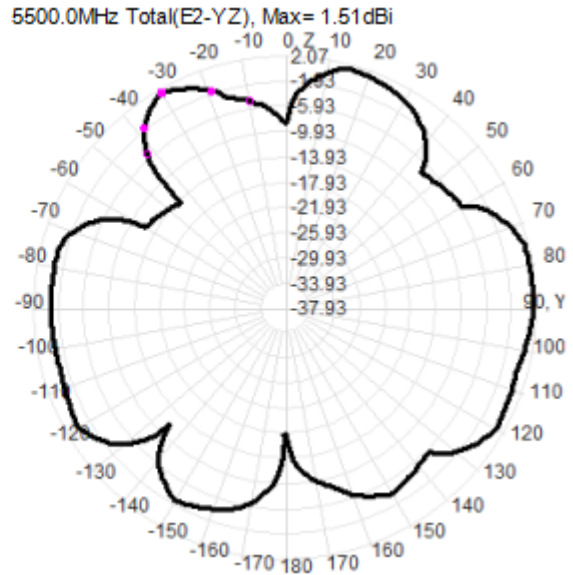
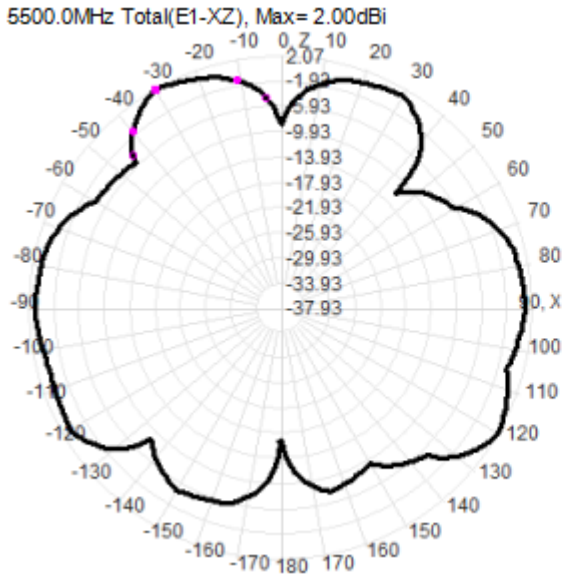
5500.0MHz H+V, Eff: 74.5%



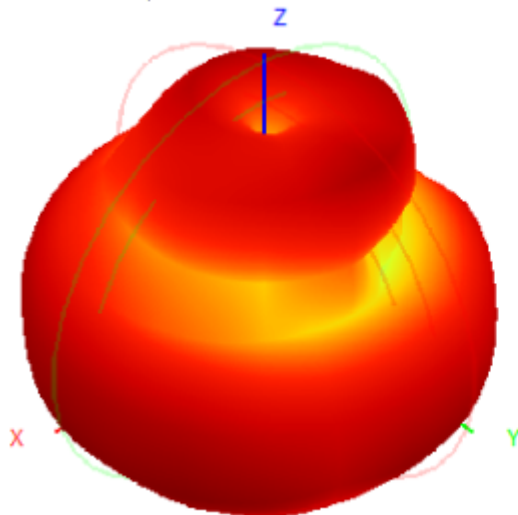
Back View



Product Datasheet



5850.0MHz H+V, Eff: 49.6%



Back View

