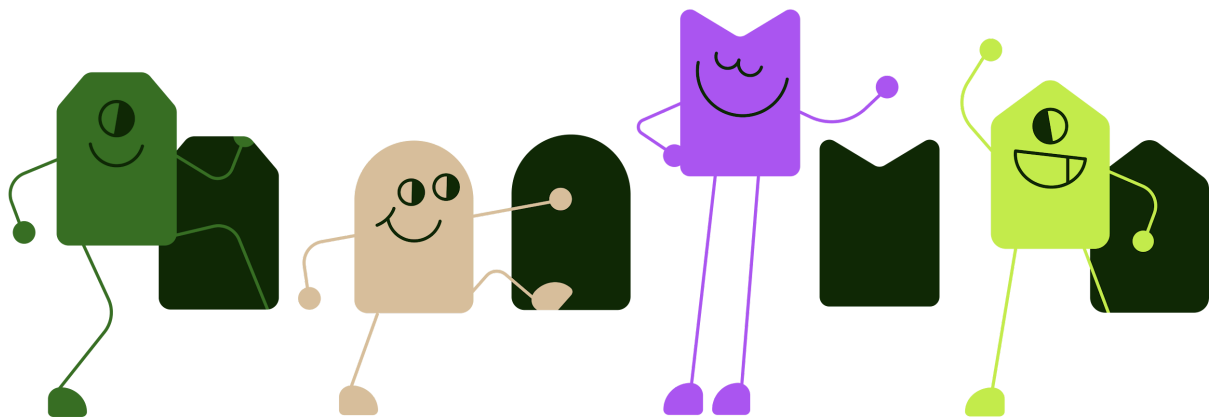


How to onboard Integra with Unloc



Onboarding Integra solution

In order for us to integrate with a new installation, there are some components and requirements that must be present.

This section describes these requirements.

Requirements

The customer must have a running Integra server with a plugin called ICEAlarm, which enables third parties (like Unloc) to connect to the server. System House can probably help verify, or help with the installation of this. Also, the Integra server must be configured to allow Web Socket Transportation for the Signal server.

Information the customer must provide

They must provide us the following information about the Integra server in order for us to connect to the server.

Name	Description	Example
Username	The username of the account.	ECA
Password	The password of the account	1234567
URL to login server URL	URL to the login server.	https://integrationtest03.iecalarm.bravidacloud.se/api/login/login
URL to SignalR server	URL to the SignalR server	https://integrationtest03.iecalarm.bravidacloud.se/signalr