

Letter LI : Pages 207-209 : (Chatterton Letter VI)

**Letter LI**, refers to one of a sequence of imaginary letters between James Hackman, a soldier who became a clergyman, & Martha Ray, who was the mistress of the earl of Sandwich. She was shot by Hackman (her lover) as she was leaving Covent Garden in 1779. Letter LI is a long letter, which stretches from p.140 to p.272 in Love and Madness. I have broken the letter down into sets of pages containing key items. At the bottom of each set of pages is a link to take you to the next set of pages in sequence, or you can click the link below and return to the Croft contents page.

[Back to Herbert Croft Contents Page.](#)

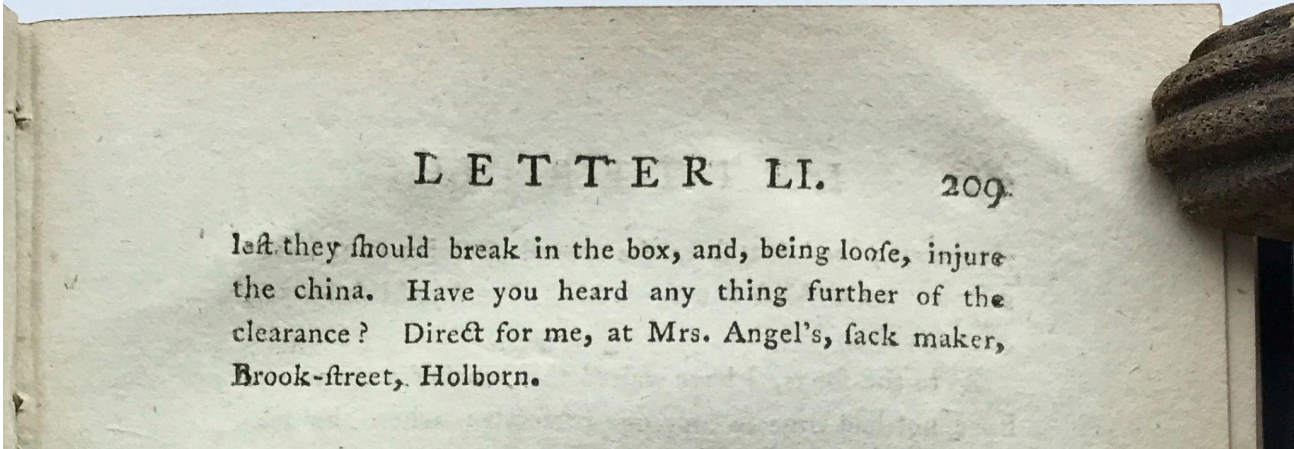
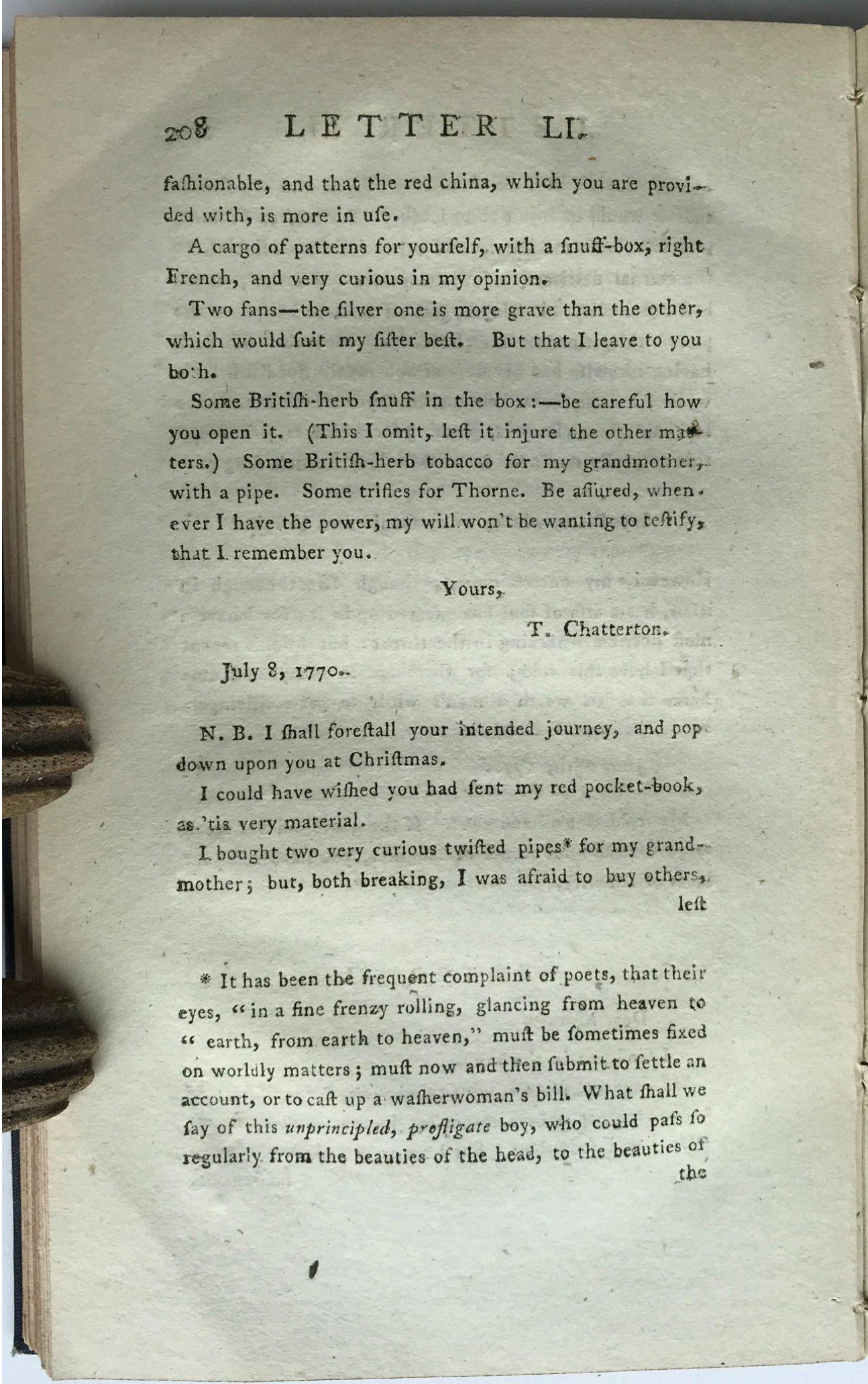
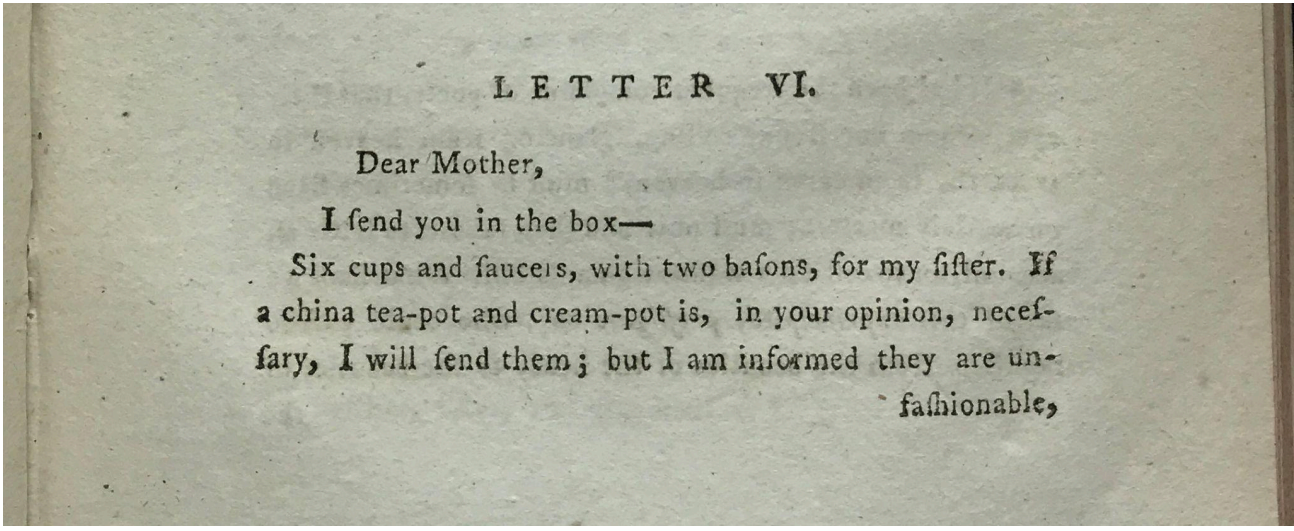
Contents

Chatterton contents : Letter LI : (Chatterton Letter VI)

- Pages 207-209 : Scroll to [View](#)  
Chatterton’s Letter to his Mother, July 8th, 1770  
**‘I shall forestall your intended journey, and pop down upon you at Christmas’**  
  
Just 46 days after he wrote the above sentence, Chatterton was dead;  
What could have been if his mother had made the trip as planned?

See the Control Page for this letter : [View](#)

Pages 207-209 : Letter LI : (Chatterton - Letter VI)



End: or go to the next set of pages : pp.209-210 : [View](#)