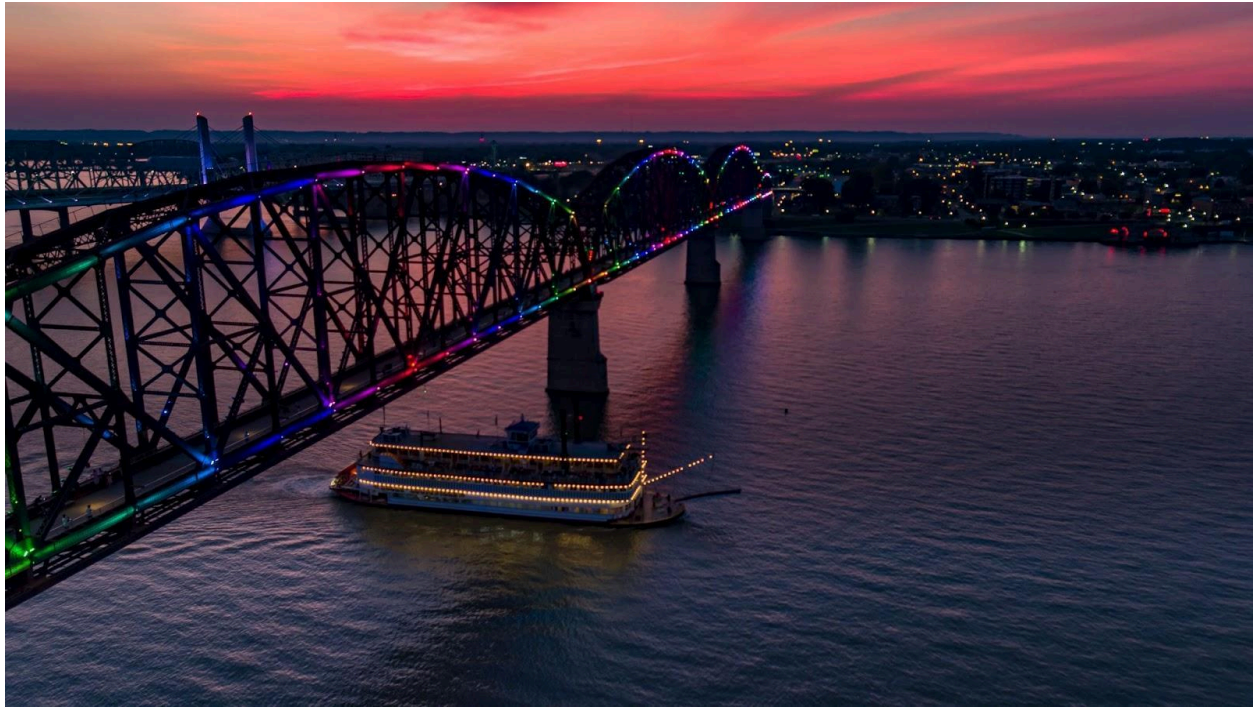


# Compelling Question: What Makes the Belle of Louisville Unique?



## Supporting Questions

1. How has The Belle physically changed over time?
2. How has The Belle's function changed over time?
3. How is The Belle different from other boats on the Ohio river?
4. How does The Belle represent Louisville today?

## Compelling Question: What Makes The Belle of Louisville Unique?

2.I.Q.1 Ask compelling questions about communities found in North America.	8.I.Q.3 Evaluate the types of supporting questions each of the social studies disciplines uses to answer compelling and supporting questions.	HS.(C, E, G, UH, WH).I.Q.1 Generate compelling questions to frame thinking, inquiry and/or understanding of key concepts in world history, US history, civics, geography, and economics.
2.G.MM.1 Explain patterns of human settlement in North America.	8.H.KH.1 Articulate Kentucky's role in early American history from the earliest colonial settlement to 1877.	HS.UH.KH.1 Examine how Kentuckians influence and are influenced by major national developments in U.S. history from 1877-present.
2.H.KH.1 Explain how events in North America impacted Kentucky.	8.E.KE.2 Explain how the availability of resources in Kentucky led people to make economic choices from the Colonial Era to Reconstruction from 1600-1877.	HS.E.KE.2 Analyze how national and international trends and policies impact Kentucky's state and local economies.
2.I.U.E.3 Identify a primary and secondary source, and explain who created it, when they created it, where they created it and why they created it.	8.I.U.E.1 Use multiple sources to develop claims in response to compelling and supporting questions.	HS.(C, E, G, UH, WH).I.U.E.1 Evaluate the credibility of multiple sources representing a variety of perspectives relevant to compelling/supporting questions in world history, US history, civics, geography, and economics.
2.I.CC.2 Construct an argument with reasons and details to address a civic issue in a community in North America.	8.I.CC.2 Construct arguments by drawing on multiple disciplinary lenses to analyze how multiple perspectives, diversity and conflict and compromise impacted the development of the United States.	HS.(C, E, G, UH, WH).I.CC.2 Engage in disciplinary thinking and construct arguments, explanations or public communications relevant to compelling/supporting questions in world history, US history, civics, geography, and economics.

Staging the Question: [Discuss what it means to you to be unique. Then discuss what makes Louisville's location unique.](#)

Supporting Question 1	Supporting Question 2	Supporting Question 3	Supporting Question 4
Understand (Action)			Assess (Action)
How has The Belle physically changed over time?	How has The Belle's function changed over time?	How is The Belle different from other boats on the Ohio river?	How does The Belle represent Louisville today?
<b>Formative Performance Task</b>	<b>Formative Performance Task</b>	<b>Formative Performance Task</b>	<b>Formative Performance Task</b>
Describe two ways The Belle shape has changed over time.	List examples of the different functions The Belle has had over time.	Explain how The Belle is different from other vessels traveling on the Ohio.	Construct a claim for how The Belle represents her community.
<b>Featured Sources</b>	<b>Featured Sources</b>	<b>Featured Sources</b>	<b>Featured Sources</b>
<b>Source A:</b> <a href="#">Timeline of names</a> <b>Source B:</b> <a href="#">Belle Pilot House</a> <b>Source C:</b> <a href="#">Ballroom Comparison</a>	<b>Source A:</b> <a href="#">Letter Reading</a> <b>Source B:</b> <a href="#">Rose Island Sign</a> <b>Source C:</b> <a href="#">Idlewild - Ferry</a> <b>Source D:</b> <a href="#">Belle of Louisville Cruise Listing</a>	<b>Source A:</b> <a href="#">Steam Engine</a> <b>Source B:</b> <a href="#">Tow with Barges</a> <b>Source C:</b> <a href="#">Shipping Chart</a> <b>Source D:</b> <a href="#">Mary - Belle Pilot House Compare</a> <b>Source E:</b> <a href="#">Historic Landmark Inquiry</a>	<b>Source A:</b> <a href="#">Race Ticket</a> <b>Source B:</b> <a href="#">Mural</a> <b>Source C:</b> <a href="#">New Report - Spectrum</a> , <a href="#">The calliope warming up - TikTok</a> , <a href="#">The Entertainer - TikTok</a>

<b>Summative Performance Task</b>	<b>ARGUMENT</b> "What Makes The Belle of Louisville Unique?" Construct an argument (e.g. detailed outline, poster, or essay) that addresses the compelling question using specific claims and relevant evidence from historical and contemporary sources while acknowledging competing views.
<b>Taking Informed Action</b>	<b>ACT</b> Write a letter to your district councilman/woman explaining why the Str. Belle of Louisville is unique to her city.

## Staging the question:

**CQ: What Makes the Belle of Louisville Unique?**

**Staging:** Discuss: What does it mean to you to be unique?

What does it mean to you to be unique?

### Essential Meaning of *unique*

1—used to say that something or someone is unlike anything or anyone else. The shape of each and every snowflake is *unique*.

2: very special or unusual

a *unique* opportunity

a *unique* feature/characteristic

3: belonging to or connected with only one particular thing, place, or person.





## Str. Belle of Louisville - Location

### CQ: What Makes the Belle of Louisville Unique?

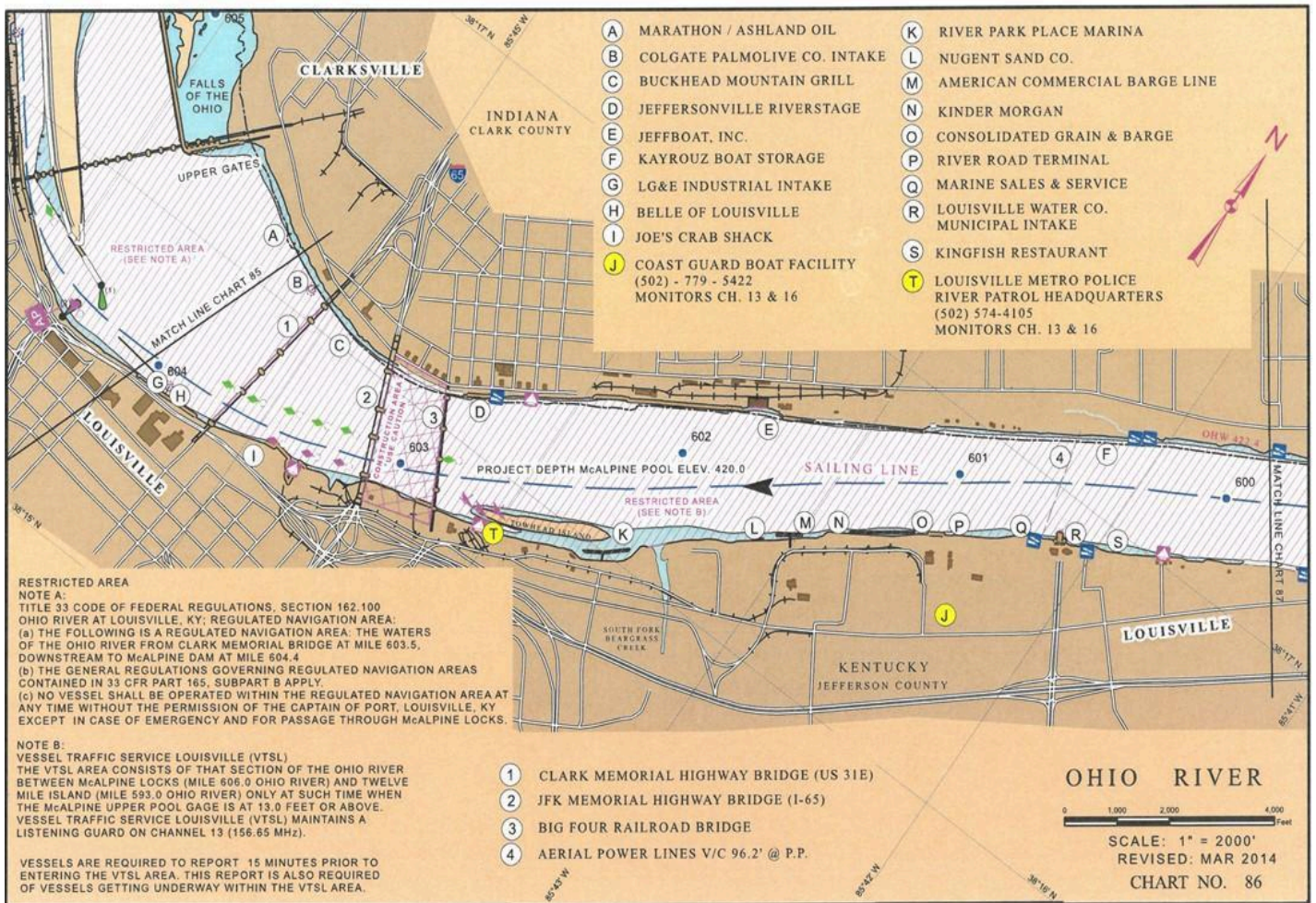
**Staging:** [U.S. Army Corp of Engineers Navigation Charts](#)

*Annotation:* Ohio river chart for the port of Louisville.

The U. S. Army Corps of Engineers marks twenty sites on their navigation chart for downtown Louisville. Only two of them are National Historic Landmarks.

(H) Belle of Louisville

(R) Louisville Water Co.





**Supporting Question 1: How has The Belle physically changed over time?**

**Source A:** [Timeline of names](#)

*Annotation: Compare the images of the Belle of Louisville throughout the years as the Str. Idlewild, Avalon, and Belle of Louisville. Image of the pilot house showing the years certain features were added. Images of the Belle's ballroom or dance floor.*

The Belle of Louisville has been known by three names since she was built in 1914.



Str.  
Idlewild

1914



Str. Avalon

1947



Str. Belle of  
Louisville

1962

Photo 1: [Idlewild 1914](#)



Photo 2: [Str. Avalon 1950's](#)

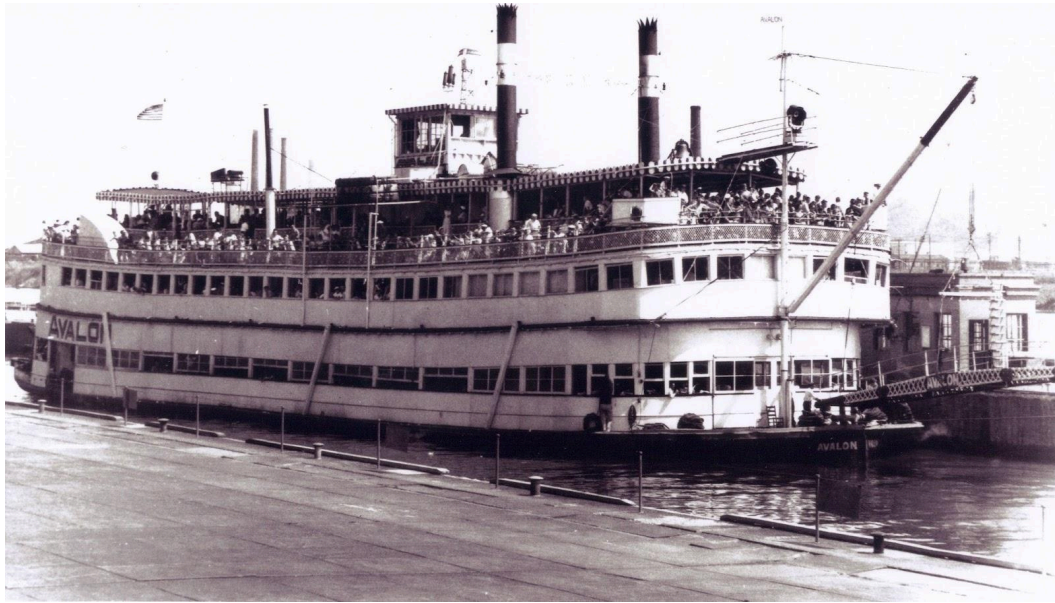


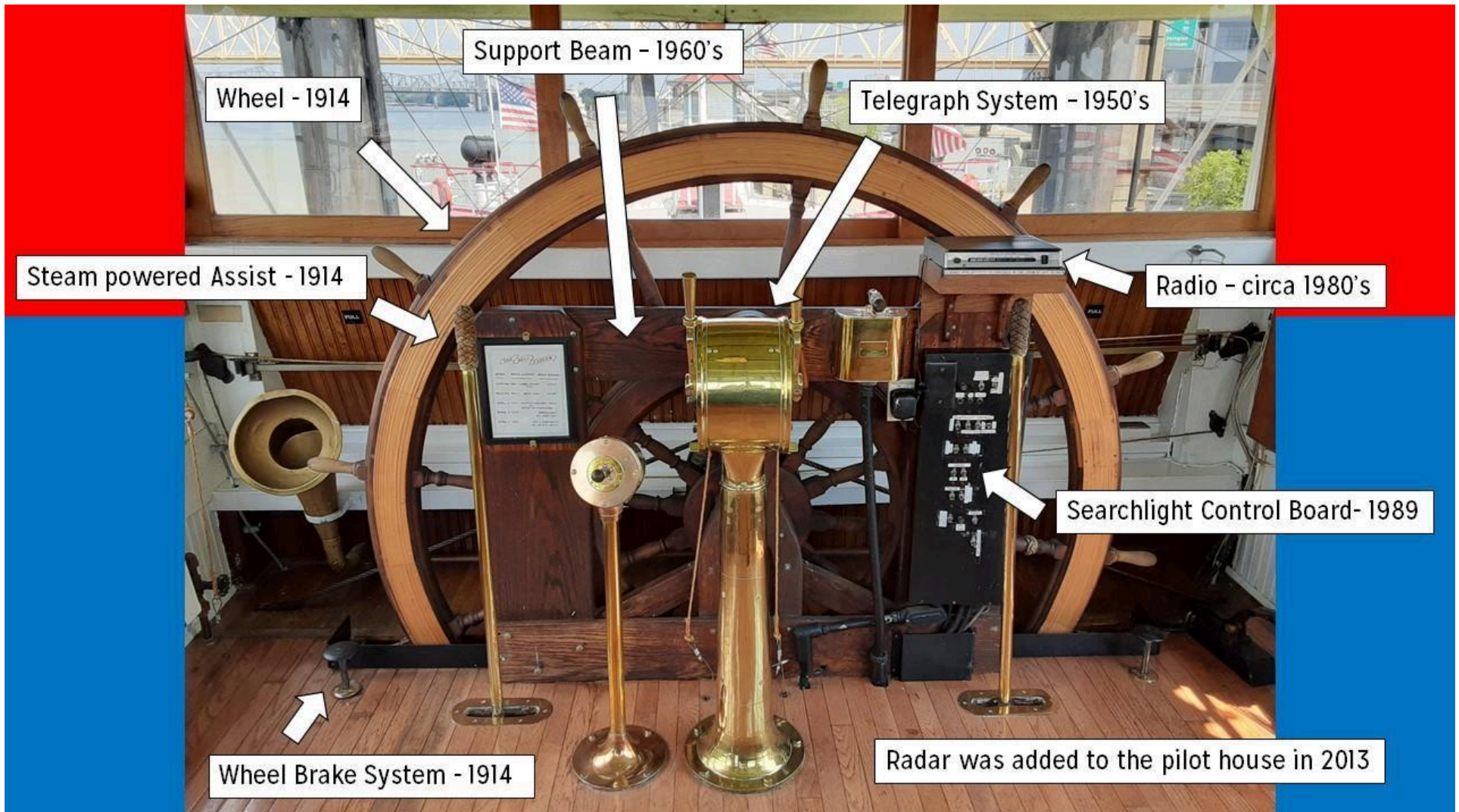
Photo 3: [Str. Belle of Louisville 1962](#)





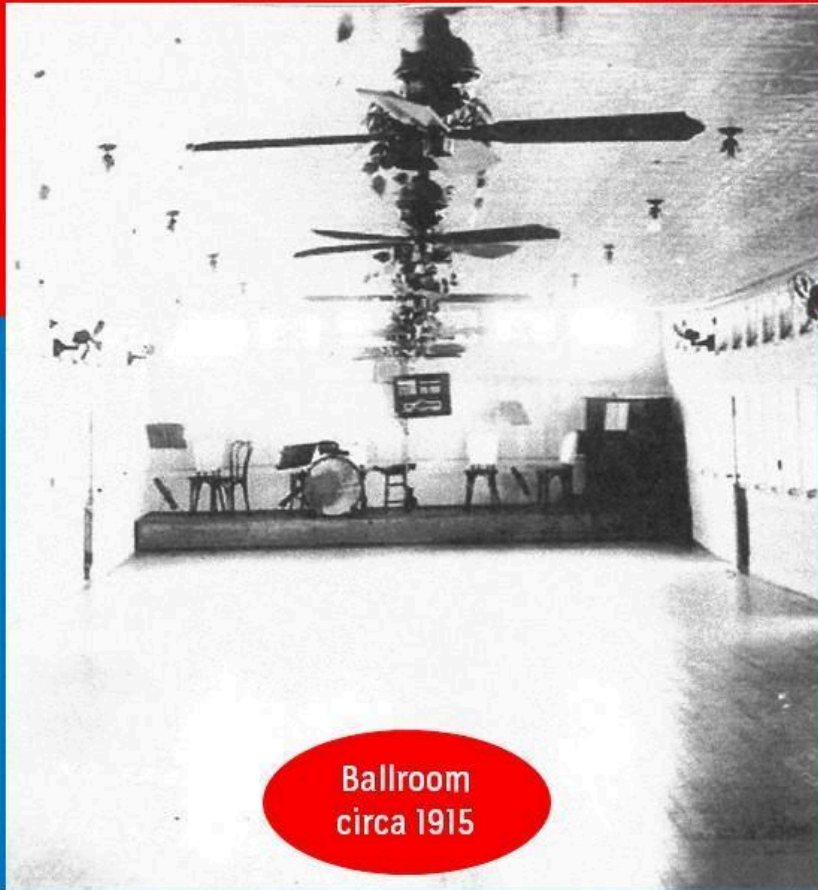
Supporting Question 1: How has The Belle physically changed over time?

Source B: [Pilot House Belle of Louisville](#)



Supporting Question 1: How has The Belle physically changed over time?

Source C: [Ballroom 1915-2021](#)





**Supporting Question 2: How has The Belle's function changed overtime?**

**Source A:** [Mary Stewart Glass granddaughter to Henry Hotter, Secretary of the Memphis Cotton Exchange and part owner of the \*Idlewild\* \[2:11 min.\]](#)

*Annotation: Letter written by Mary Stewart Glass granddaughter to Henry Hotter; Secretary of the Memphis Cotton Exchange and part owner of the Idlewild. Advertising sign for trips to Rose Island Park in IN on the Str. Idlewild. Cruise Listing on the Belle of Louisville 2021. Str. Avalon as a ferry to Fontaine Ferry Park, 1934.*



Supporting Question 2: How has The Belle's function changed overtime?

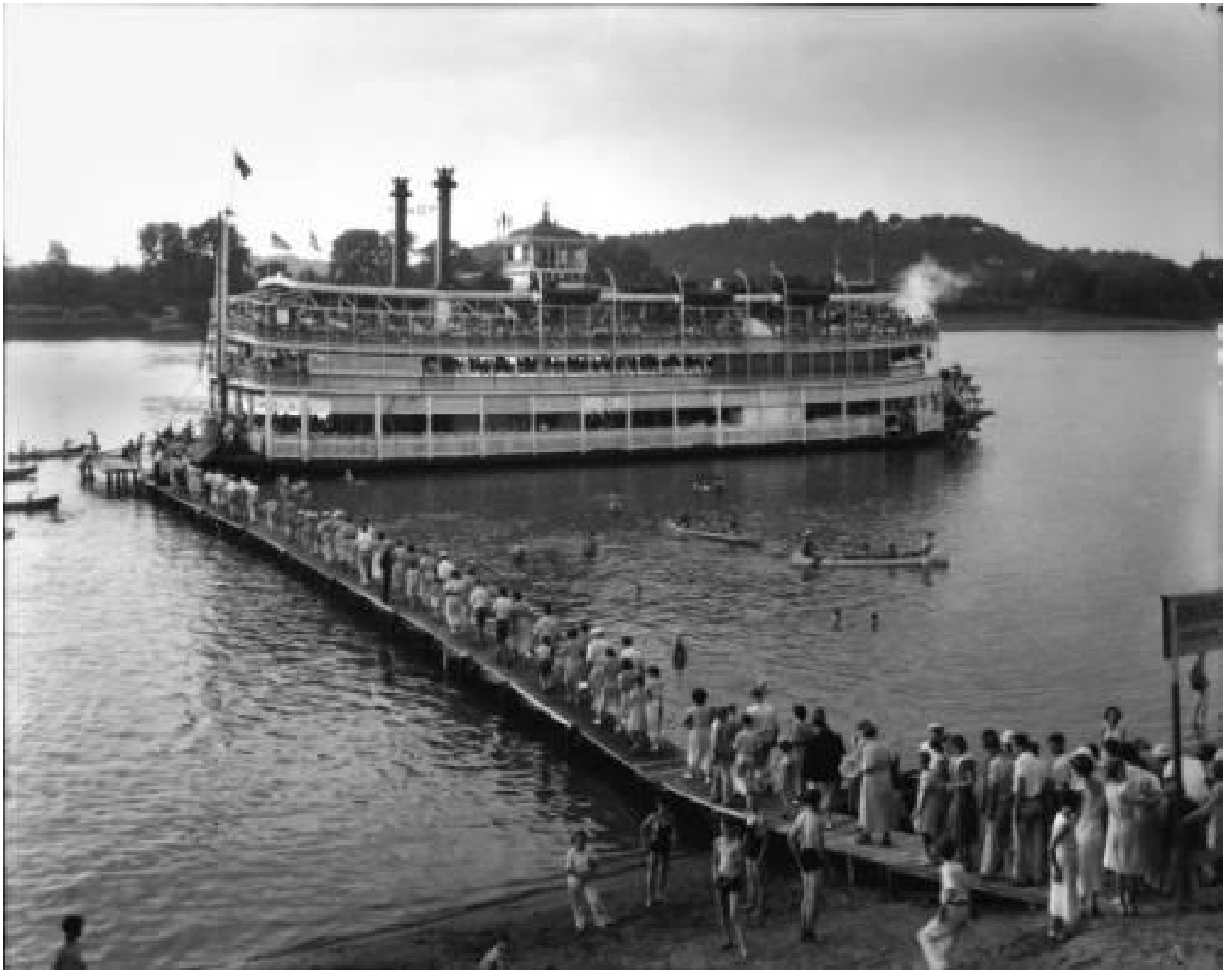
Source B: [Rose Island Sign](#), Advertisement sign for the Str. Idlewild circa 1920's. Photo from Rose Island Park 12500 IN-62, Charlestown, IN 47111.





**Supporting Question 2: How has The Belle's function changed overtime?**

Source C: [Str. Idlewild as a ferry to Fontaine Ferry park, 1934](#)



## Supporting Question 2: How has The Belle's function changed overtime?

Source D: [Belle of Louisville Cruise Listing](#)

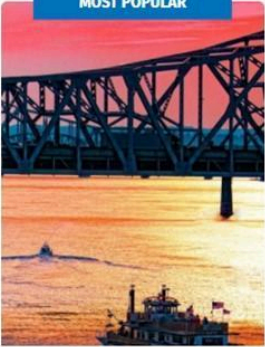
date

price low to high

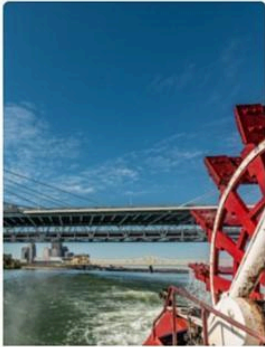
price high to low

name (a-z)

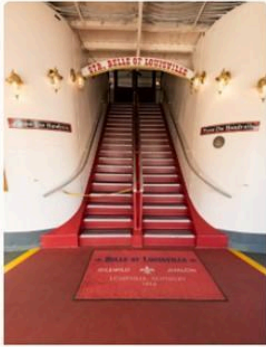
MOST POPULAR



SUNSET & MOONLIGHT CRUISES



PICNIC LUNCH



STEAMBOAT SUPPER

☐ Dining

☐ Sightseeing

☐ Special events

SEARCH



**Supporting Question 3: How is The Belle different from other vessels traveling the Ohio river?**

**Source A:** [Steam Engine Belle of Louisville](#)

*Annotation: Original engines to The Belle. Comparison of The Belle's Pilot house to the Mary M. Miller's modern pilot house. Picture of a Diesel powered Tow. Shipping information for the Ohio river.*



Starboard steam engine.

The Belle of Louisville's large sternwheel is propelled by a pair of single cylinder, non-condensing, reciprocating steam engines.

Single Cylinder - Each engine only has 1 piston

Non-condensing - The steam that is used inside the engine is used once and then is vented out as exhaust

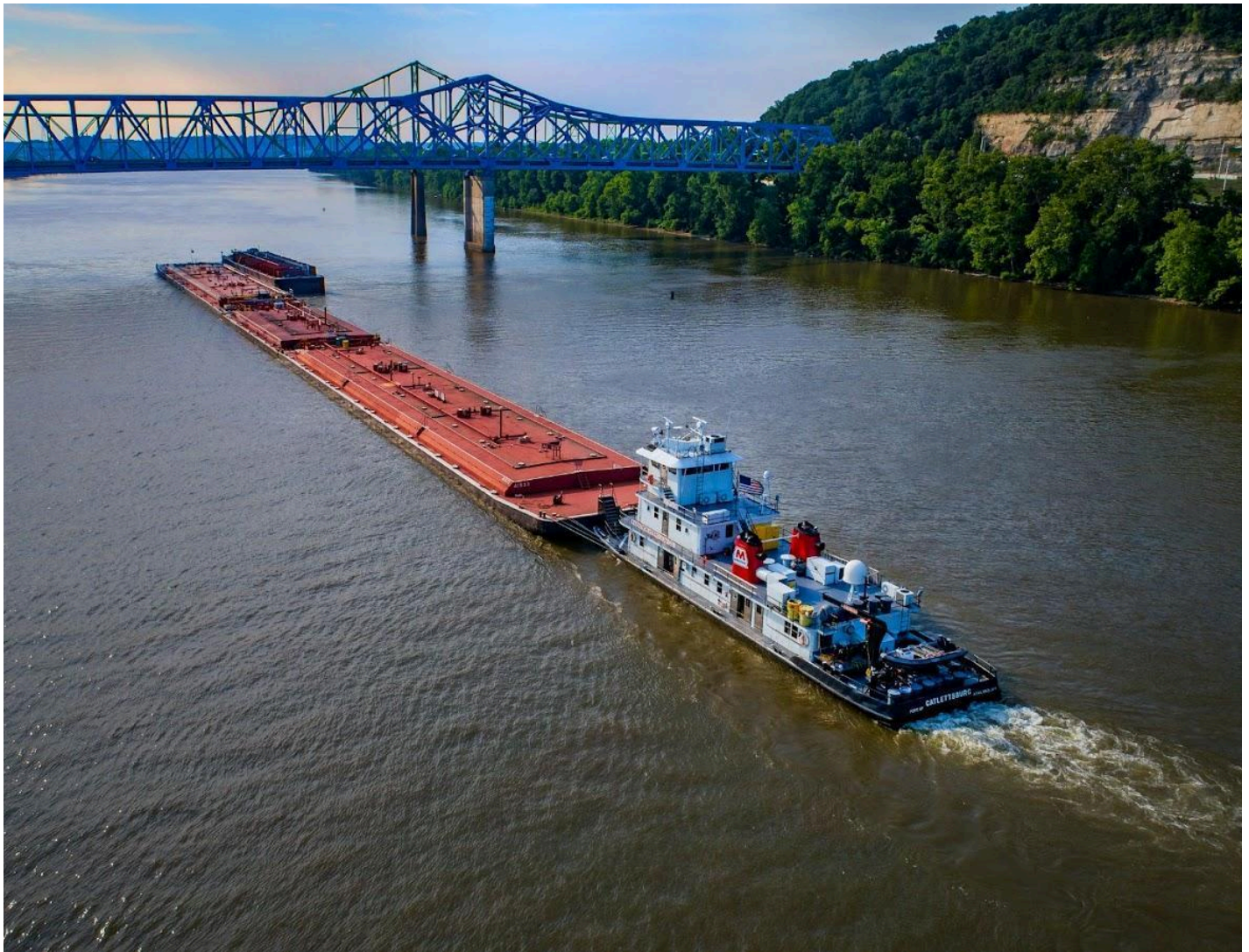
Reciprocating - Each piston moves back and forth within the cylinder

We believe The Belle's engines were built sometime between 1889-1890. Pittsburgh was spelled without an "H" officially during these two years.  
*Right - Starboard engine's end brass.  
Notice the spelling of Pittsburgh.*



**Supporting Question 3: How is The Belle different from other vessels traveling the Ohio river?**

**Source B:** [Marathon Petroleum Co. diesel powered Tow with barges](#)

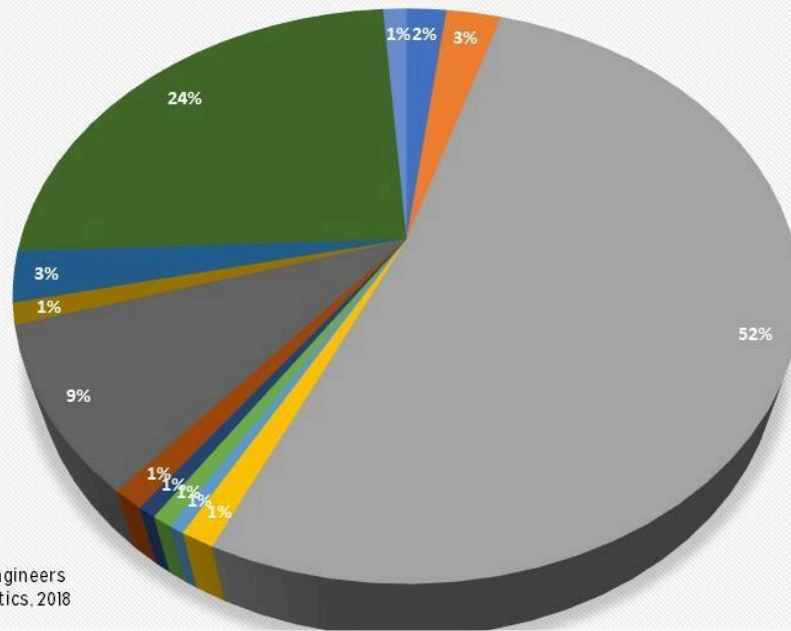




### Supporting Question 3: How is The Belle different from other vessels traveling the Ohio river?

Source C: [Chart of all cargo shipped on the Ohio river in 2018. Data source U.S. Army Corps of Engineers. Shipping Data](#)

**Cargo shipped on the Ohio River System - 2018**



Total: Ohio River System  
138,178,957 Tons

Source: U. S. Army Corps of Engineers  
Waterborne Commerce Statistics, 2018

- |                        |                              |                          |                            |
|------------------------|------------------------------|--------------------------|----------------------------|
| ■ Chemical Fertilizers | ■ Other Chemicals            | ■ Coal                   | ■ Crude Petroleum          |
| ■ Food Products        | ■ Iron, Steel Waste          | ■ Lumber                 | ■ Non-Ferrous Ores         |
| ■ Petroleum Products   | ■ Primary Non-Metal Products | ■ Primary Metal Products | ■ Sand, Gravel, Salt, Etc. |
| ■ Unknown Products     |                              |                          |                            |

Supporting Question 3: How is The Belle different from other vessels traveling the Ohio river?

Source D: [Mary M. Miller and Belle of Louisville Pilot House Comparison](#)





## Supporting Question 3: How is The Belle different from other vessels traveling the Ohio river?

Source D: [National Historic Landmark Inquiry](#)

### United States Department of the Interior's Inquiry into the Str. Belle of Louisville inclusion as a National Historic Landmark

 **United States Department of the Interior**  
NATIONAL PARK SERVICE  
P.O. Box 3717  
WASHINGTON, D.C. 20013-3717

TO: (P) 104-1450  
FROM: (P) 104-1450  
DATE: 3/30/89

Mr. L. E. Johnson, Director  
Belle of Louisville Operating Board  
401 Street and River Road  
Louisville, Kentucky 40202

Dear Mr. Johnson:

We wish to inform you that the National Park Service is studying the properties identified on the enclosed sheet to determine their potential for designation as National Historic Landmarks. The National Historic Landmarks Program recognizes sites of national significance in the nation's history, architecture, archeology, and culture. Each Landmark receives a certificate of designation; owners may also apply for a license plaque.

National Historic Landmark designation follows three steps: study, which requires visiting the properties and preparing recommendations; review of the recommendations by the National Park System Advisory Board; and a decision by the Secretary of the Interior on the Board's recommendations.

When we complete our studies of the subject properties, you will receive copies of them. At that time you will have 60 days to submit your views in writing if you so desire. After the 60-day period, we will submit the recommendations and your comments to the Advisory Board and inform the Secretary of the Board's recommendations.

To assist you in considering this matter, we have enclosed a copy of the regulations that govern the National Historic Landmarks Program. They describe the effects of designation (56c, 45.3) and specify how you may comment on a proposed designation (56c, 45.5(d)(4-5)). We also call your attention to the supplemental information that appears on the enclosed sheet.

Sincerely,

  
Edwin C. Moore  
Chief Historian

Enclosures

**Quick Fact:**  
There are just over  
2500 National Historic  
Landmarks in the U.S.  
(2021)

 **City of Louisville**  
Office of the Mayor  
301 Jefferson Street, Louisville, KY 40202-0100  
March 29, 1989

Edwin C. Moore, Chief Historian  
National Park Service  
P.O. Box 3717  
Washington, D.C. 20013-3717

Dear Mr. Moore:

The City of Louisville is pleased that both the Belle of Louisville and the Mayor Andrew Brodhead are under consideration by the Department of the Interior as National Historic Landmarks. We appreciate the acknowledgment that these vessels are important to the nation's maritime history.

The designation of the Belle of Louisville and the Mayor Andrew Brodhead will result in Louisville's citizens a prize in their history and heritage. It will enhance the importance of our waterfront to the city, and will complement waterfront development activities currently underway.

We are wholeheartedly in favor of the Belle of Louisville and the Mayor Andrew Brodhead being National Historic Landmarks. Please let me know if there is anything more we can do to assist you.

  
Robert A. Johnson  
Mayor

cc: Edwin Moore

 **THE HISTORIC STEAMER  
BELLE OF LOUISVILLE**  
DESIGNATED BY THE SECRETARY OF THE INTERIOR  
AS A NATIONAL HISTORIC LANDMARK  
ON APRIL 21, 1989

FOUNDED BY ROBERT MOORE • LOUISVILLE MARITIME MUSEUM • 1000 BURLAP  
BENTLEY STREET • PORTLAND, OREGON • LOUISVILLE, KENTUCKY 40202 • 1989-1990

April 21, 1989

The Honorable Edwin Moore, National  
Historic Landmark  
Louisville, KY 40202

Dear Congressman Moore:

The Steamer Belle of Louisville and the Mayor Andrew Brodhead, will soon be included in the National Park System (NPS) Advisory Board for possible designation as National Historic Landmarks (NHL). They will be reviewed and, if appropriate, will be designated by the Secretary of the Interior as NHL.

The NPS recognizes the Belle of Louisville and the Mayor Andrew Brodhead as historic landmarks and has been working to ensure that they are properly maintained and protected. They are also serving as a model for the preservation of the nation's maritime heritage.

The Belle is the oldest surviving steamship in the world and is a unique example of the early 19th-century riverboat industry. It is also a symbol of the nation's maritime heritage and is a source of pride for the people of Louisville.

In addition to the general elements, we offer additional facts to assist in the designation process. We have also developed a brochure presentation and a video tape to assist in the designation process. We are also developing a brochure presentation and a video tape to assist in the designation process.

We understand that a final study regarding the Belle of Louisville and the Mayor Andrew Brodhead will be made in Washington on April 21, 1989. The information and reports on this study will be submitted and we will take the time to ask for your direct assistance by writing a letter on our behalf to be received no later than April 21, 1989, to Edwin C. Moore, Chief Historian, National Park Service, History Division 3717, P.O. Box 3717, Washington, DC 20013-3717.

We appreciate your assistance and look forward to a favorable outcome.

Sincerely,

  
Robert A. Johnson  
Mayor

cc: Edwin Moore  
L. E. Johnson, Chairman, Operating Board  
Belle of Louisville

 **JEFFERSON COUNTY BOARD OF COMMISSIONERS**  
OFFICE OF THE COUNTY CLERK  
1000 BURLAP STREET  
LOUISVILLE, KY 40202

April 21, 1989

Mr. Edwin C. Moore, Chief Historian  
National Park Service  
P.O. Box 3717  
Washington, D.C. 20013-3717

Dear Mr. Moore:

In behalf of the citizens of Jefferson County, I would like to express my support for consideration of the Steamer Belle of Louisville and the Mayor Andrew Brodhead to be designated as National Historic Landmarks by the National Park Service, United States Department of the Interior. We appreciate not only the importance of these two vessels to our community, but their part in the river history of the nation.

The close and constant contact to be achieved between the history and present growth of Jefferson County. The current responsibility of the authorities and the preservation of the Belle of Louisville and the Mayor Andrew Brodhead is of the utmost importance to the citizens of Jefferson County. The preservation of these historic landmarks is of great importance to the community and the history of the nation. The preservation of these landmarks is of great importance to the community and the history of the nation.

Both vessels are considered to be of great historical and scientific value. They are also serving as a model for the preservation of the nation's maritime heritage. They are also serving as a model for the preservation of the nation's maritime heritage.

I am very fortunate to represent the Belle of Louisville and the Mayor Andrew Brodhead as National Historic Landmarks. If there is anything else I can do to assist you, please let me know.

Sincerely,

  
Harvey S. Brown  
County Clerk

 **Congress of the United States**  
House of Representatives  
Washington, DC 20515-1700  
April 21, 1989

Captain Mike Fitzgerald  
Belle of Louisville  
River Front Plaza  
Fourth and River Road  
Louisville, Kentucky 40202

Dear Mike:

Many thanks for your recent letter concerning the nomination of the steamer Belle of Louisville and the Mayor Andrew Brodhead as National Historic Landmarks.

I am pleased to inform you that I have recently written to officials at the National Park Service, in support of these nominations. Both of these historically important maritime structures have played a substantial role in our community and in the development of the western half of the United States, and I feel that they are both very worthy of being named National Historic Landmarks.

Remember, please don't hesitate to contact me if I may be of further service to you in any way.

With best wishes and warm regards,

  
Robert A. Johnson  
Member, House of Representatives

cc: Edwin Moore  
L. E. Johnson, Chairman, Operating Board  
Belle of Louisville

### United States Department of the Interior's Acceptance of the Str. Belle of Louisville As a National Historic Landmark

 **United States Department of the Interior**  
NATIONAL PARK SERVICE  
P.O. Box 3717  
WASHINGTON, D.C. 20013-3717

TO: (P) 104-1450  
FROM: (P) 104-1450  
DATE: 9/28/89

Mr. L. E. Johnson, Director  
Belle of Louisville Operating Board  
401 Street and River Road  
Louisville, Kentucky 40202

Dear Mr. Johnson:

I am pleased to inform you that the properties identified on the enclosed sheet have been found to possess national significance in the history of the United States. As a result, the Secretary of the Interior has designated them National Historic Landmarks.

The purpose of Landmark designation is to identify and recognize nationally significant sites and to encourage their owners to preserve them. Landmarks are chosen after careful study by the National Park Service. They are evaluated by the National Park System Advisory Board and designated by the Secretary of the Interior in accordance with the Historic Sites Act of 1935 and the National Historic Preservation Act of 1966.

Designation as a National Historic Landmark automatically places a property in the National Register of Historic Places, if it is not already so listed, and entitles it to the advantages and benefits provided by the National Historic Preservation Act of 1966 and other Federal laws protecting historic properties.

We are pleased to include these properties on the roll of National Historic Landmarks as significant representatives of the Nation's heritage.

Sincerely,

/s/ Donalinda Long  
Donalinda Long  
Chief Historian

Enclosure

**Quick Fact:**  
There are 32 National  
Historic Landmarks in  
Kentucky.  
(2021)





Supporting Question 4: How does The Belle represent Louisville today?

Source B: [Kentucky Derby Festival 2021](#)

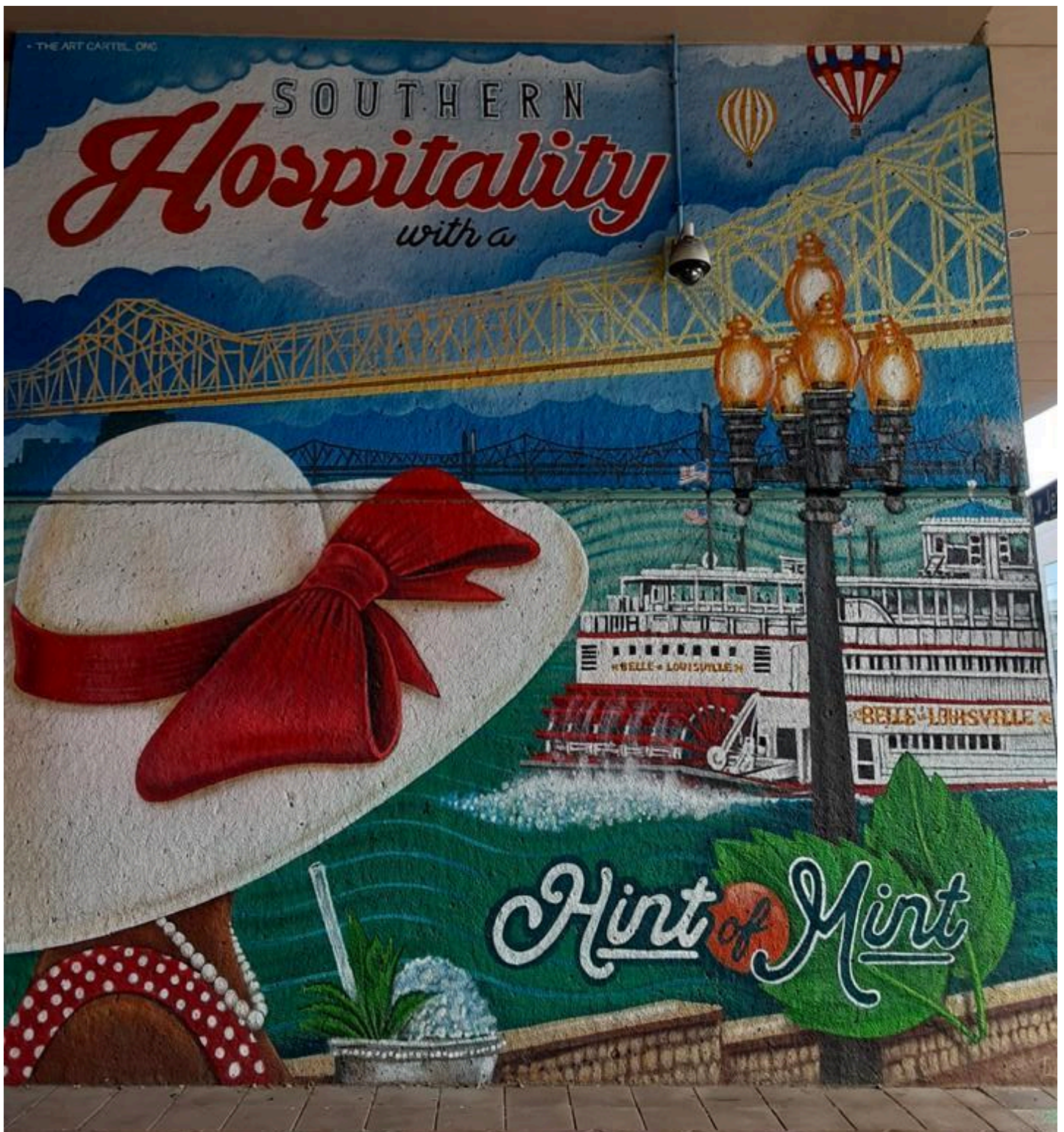
Annotation: Commemorative ticket given to passengers aboard the Str. Belle of Louisville during the 1964 Great Steamboat Race. The signatures are from Crew and passengers onboard





Supporting Question 4: How does The Belle represent Louisville today?

Source C: [The Art Cartel, Mural corner of 3rd and Jefferson, Downtown Louisville KY](#)





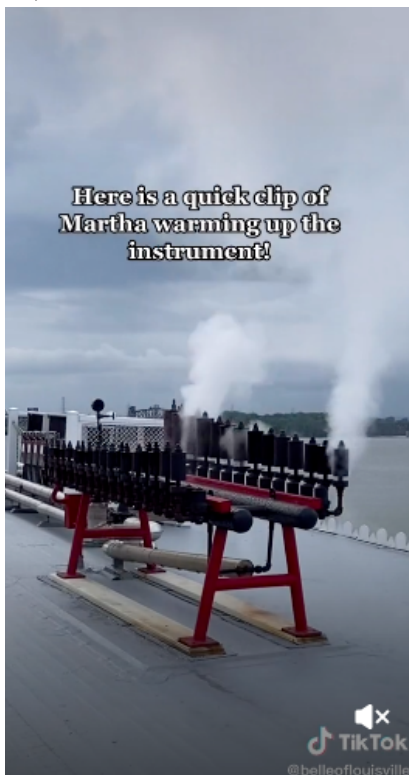
**Supporting Question 4: How does The Belle represent Louisville today?**

**Source D:** Meet the Calliope player.

*Media 1: [Erin Kelly Kentucky. Belle of Louisville musician's tunes gain steam on TikTok. Spectrum News 1. July 30, 2021](#)*



*Media 2: [The calliope warming up - TikTok](#) The calliope warming up has 953,700 views; 189,200 likes; 965 comments; and 682 shares. The total play time on that video is over 6,126 hours.*



*Media 3: [The Entertainer - TikTok](#) "The Entertainer" has 454,200 views; 82,200 likes; 1,507 comments; and 1,318 shares. The total play time on that video is over 2,466 hours.*



