

Enter Title Here

This is an **abstract** section, you can insert your abstract here.

This document uses the Docx2LaTeX add-on, install it from here if you haven't already.

<https://workspace.google.com/u/0/marketplace/app/docx2latex/415272416461>

Select a “**University of Washington Dissertation Template**” in the add-on's select template dropdown to export this document to LaTeX code 100% compliant with the university's guidelines.

Add authors and cover details using the add-on.

Add-on also brings LaTeX's features of cross-referencing and citing to Google Docs.

Now you can write the whole thesis/dissertation without leaving Google Docs.

Makes your writing fast, efficient, and powerful!

Title of the first chapter

Note that the title written above has **Subtitle** style applied to it. Use this style for other chapters too. Numbers will be automatically added at the time of conversion.

Introduction

Note that the Introduction written above has **Heading-1** style applied to it. Use this style for other sections. Numbers will be automatically added at the time of conversion.

Subsection Heading

Subsection Text Here. Note that Subsection uses **Heading-2** style, and numbers will be automatically added at the time of conversion.

Subsubsection Heading

Subsubsection text here. Note that subsubsection uses **Heading-3** style and numbers will be automatically added.

Adding Figure Caption

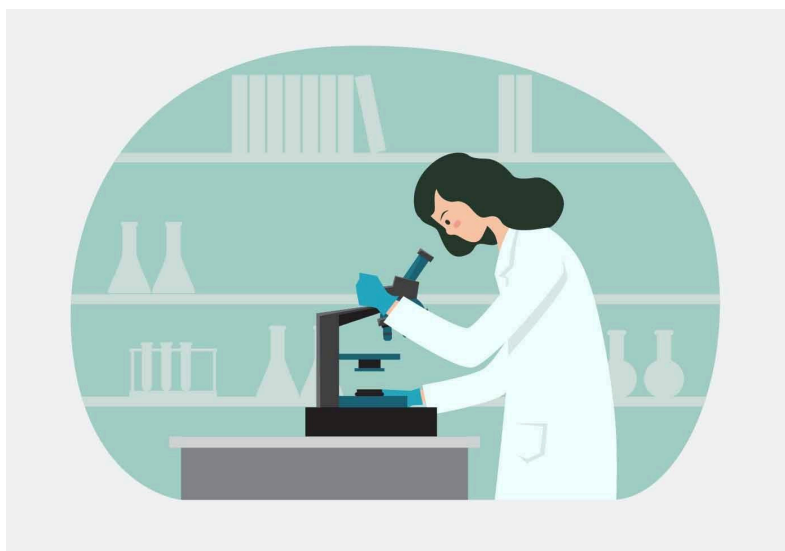


Figure 1: To add caption to Figure use Docx2LaTeX Add-on > Cross-ref > Add Figure Caption button.

Adding Tables

This	is	Sample	Table

Table 1: To add table captions use Docx2LaTeX Add-on > Cross-ref > Add Table Caption.

Conclusion

The conclusion goes here.