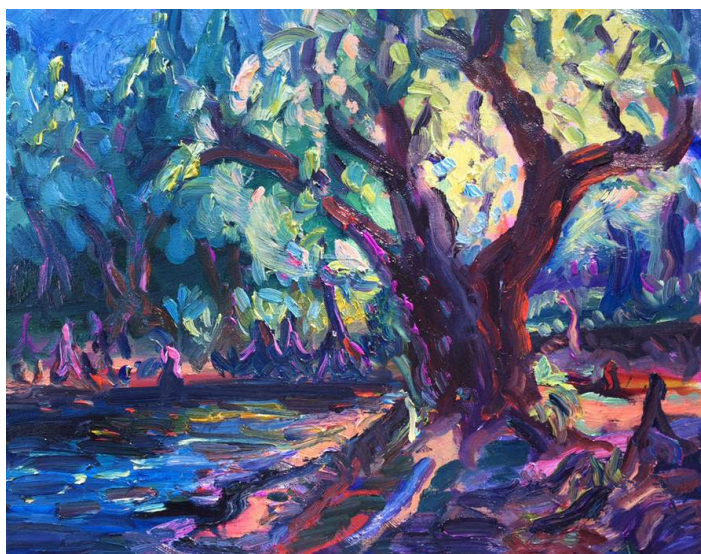


Photo: John S. Quarterman, River Bend Shoals, Withlacoochee River

"I've paddled hundreds of rivers, and the Little River is one of the most delightful, beautiful blackwater streams I've been on anywhere in the south. ...**big with beauty**. It was bordered by loblolly pines and live oaks, with water elm, river birches and willows on the banks, and with large cypress and Ogeechee tupelos growing in the channel itself. The trees were hung with Spanish moss, and some of the oaks supported gardens of resurrection ferns on their big branches. Under the trees, swamp azalea was in full bloom, its blossoms ranging from white to pink. The farther I went downstream, the more stately the forest became, protected in a widening swamp." —Burt Kornegay



Painting: Tupelo at the confluence of the Little and Withlacoochee Rivers, by Julie Bowland

### Sponsoring Organizations:

Valdosta-Lowndes County Tourism Authority  
Valdosta-Lowndes County Development Authority  
Valdosta-Lowndes County Parks & Rec. Authority  
Brooks County, GA, Board of County Commissioners  
Adel, Georgia, Mayor and City Council  
Hahira, Georgia, Mayor and City Council  
Valdosta, Georgia, Mayor and City Council

### Etiquette

1. Carry out all trash with you
2. Camp only where you have permission
3. Do not cut or damage living trees
4. Take only pictures, leave only footprints.
5. Control pets or leave them at home
6. Respect wildlife
7. Respect waterfront property
  - o Don't trespass on private property
  - o Minimize impacts to shore.
8. Be courteous to other water trail users.

*"Intimate, shaded in its northern reaches) mysterious in its beauty – the Withlacoochee is one of the few Coastal Plain streams in which limestone ledges form small shoals. A second distinctive feature of the river is the occasional white sandbar on the insides of bends, which are perfect for swimming or camping."*

—Suzanne Welander and Bob Sehlinger, Canoeing and Kayaking Georgia (Menasha Ridge Press).

**Unfinished Draft, 2018-08-25** See the [README](#) for details.

### Help Protect Your Watershed

Become certified to perform Water Quality Testing  
Report invasive species to [www.EDDMapS.org](http://www.EDDMapS.org)

### Safety

1. Be prepared with life vests and cell phone.
2. Let someone know your float plan
3. Beware of alligators: caution small children or pets.
4. Be extremely careful with campfires.

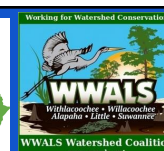
## Mission



Picture: John S. Quarterman, Franklinville Landing, 2018-02-11

WWALS Watershed Coalition advocates for conservation and stewardship of the Withlacoochee, Willacoochee, Alapaha, Little, and Suwannee River watersheds in south Georgia and north Florida through education, awareness, environmental monitoring, and citizen activities.

[www.wwals.net](http://www.wwals.net)



[www.garivers.org/gwtc](http://www.garivers.org/gwtc)

[www.wwals.net/maps/withlacoochee-river-water-trail/](http://www.wwals.net/maps/withlacoochee-river-water-trail/)

