

MS/HS Student Guide to Resetting and Activating Passwords

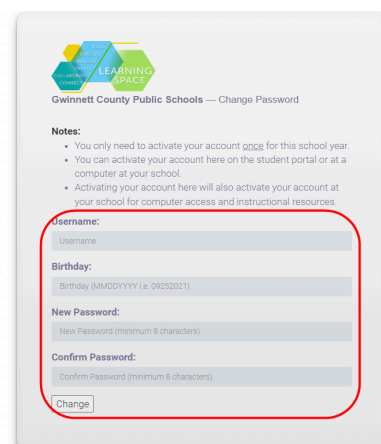
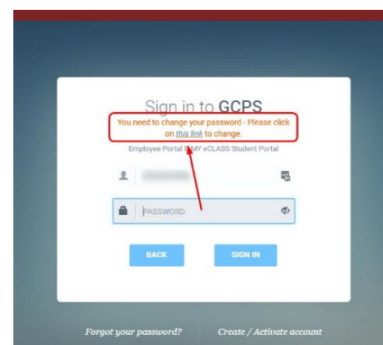
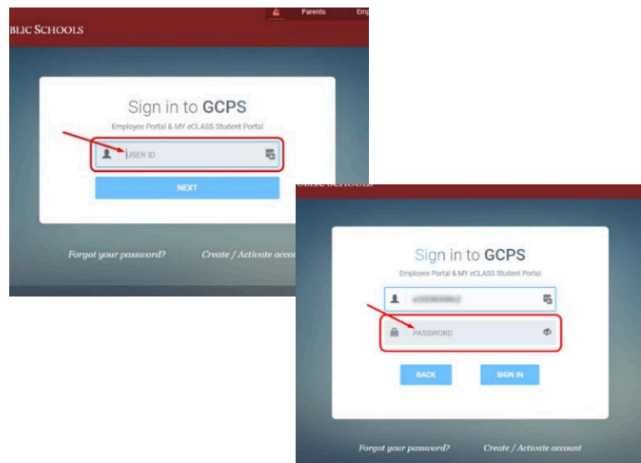
Gwinnett County Public Schools

Updated June 2025

At the start of the school year, students in grade 6–12 are required to activate their account. A student cannot use StudentVUE to activate their account.

Please follow these steps:

1. Navigate to the Student Portal login screen, enter the **Student's ID number** and select **Next**.
2. Enter student's birthday as the **Password** (Example: February 5, 1998, you would enter 02051998). You will be automatically redirected or prompted to click on a link to access the Student Activation page.
3. A new login window will then show with your student ID. At the top you will see in orange 'You need to change your password- Please click on *this link* to change.' Select the '**this link**' text.
4. The following screen will require you to change your password.
 - Username = Student ID
 - Birthday = Your birthdate in the format MMDDYYYY (Example: If your birthday is February 5, 1998, you would enter 02051998)
 - New Password = The password must be at least 8 characters. We recommend using a passphrase. To learn more about how to create a passphrase visit www.gcpsk12.org/cybersecure.
 - Confirm Password = Retype from above
 - Click **Change** to complete.



** If using a Chromebook, restart the device after successfully changing the password. Note: "Click here to login in with your new password" will not work as expected.

