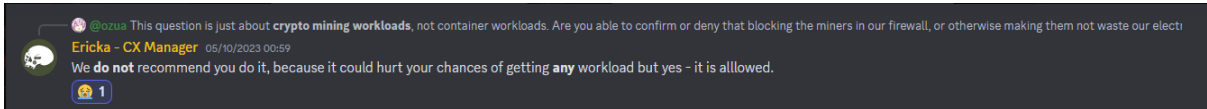


# Guide – HOW TO FIREWALL BLOCK MINING

This guide is provided by Deniz. In case of any questions, ask me on Discord (denizabbeel). This guide was made for Windows 11 but will also be compatible with Windows 10.

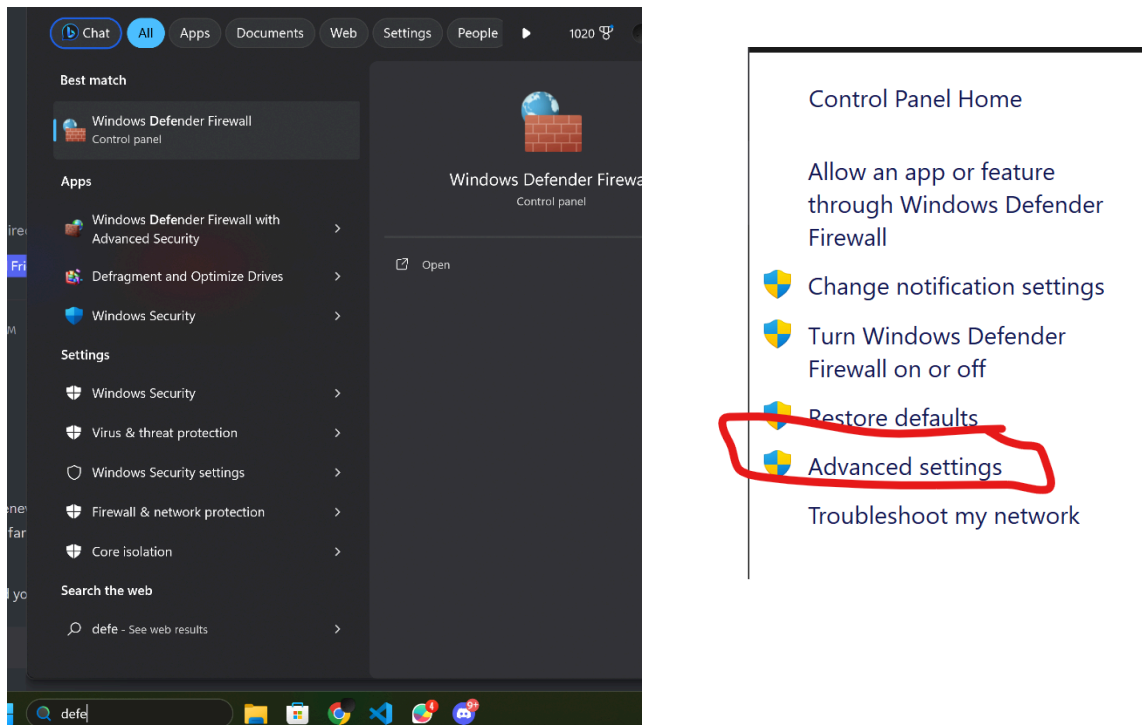
## BE AWARE:



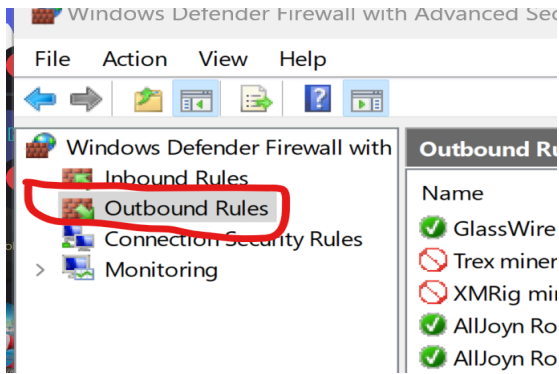
Last update (16:10/2023)

*I have no affiliation with the Salad team. I am doing this volunteer work to assist the community!*

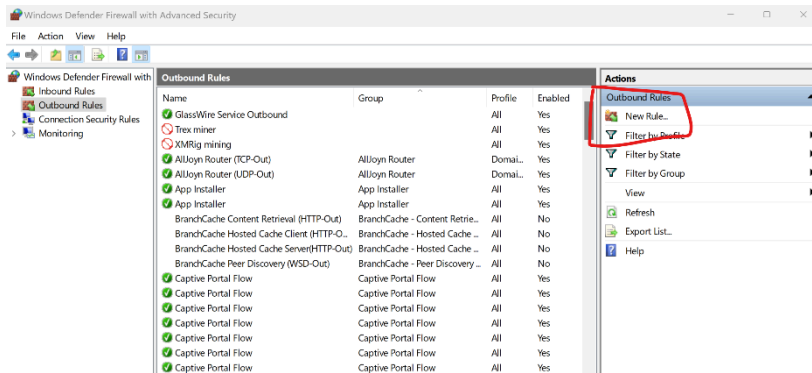
## Step 1 – Windows Defender Firewall -> Advanced Security



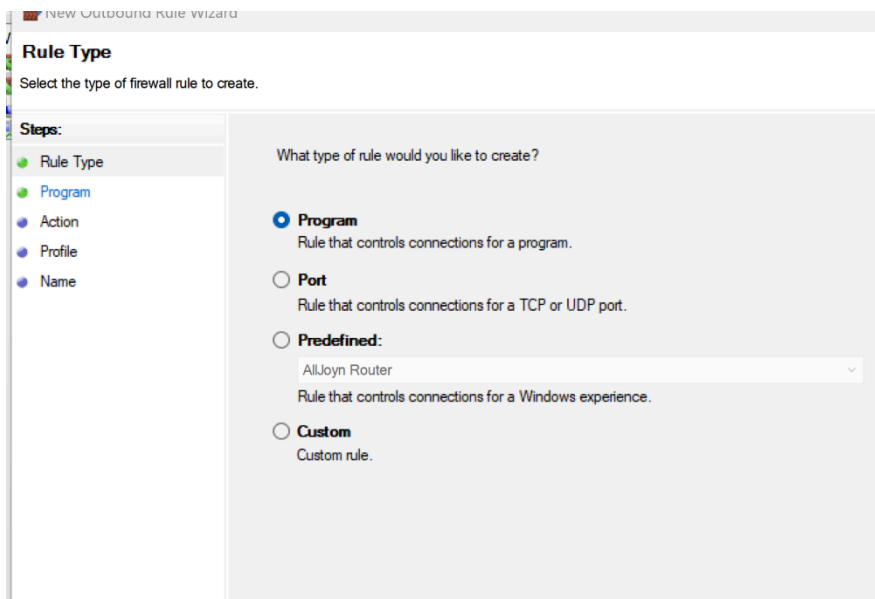
Step 3 – Blocking the miners with outbound is the only necessity.



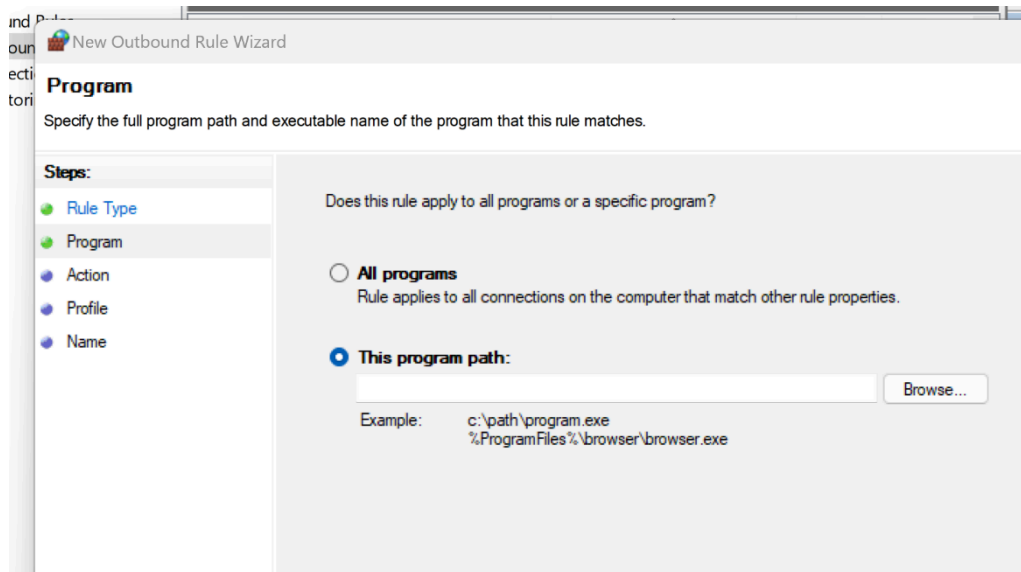
**Step 4 – In outbound create a new rule.**



**Step 5 – Choose program.**

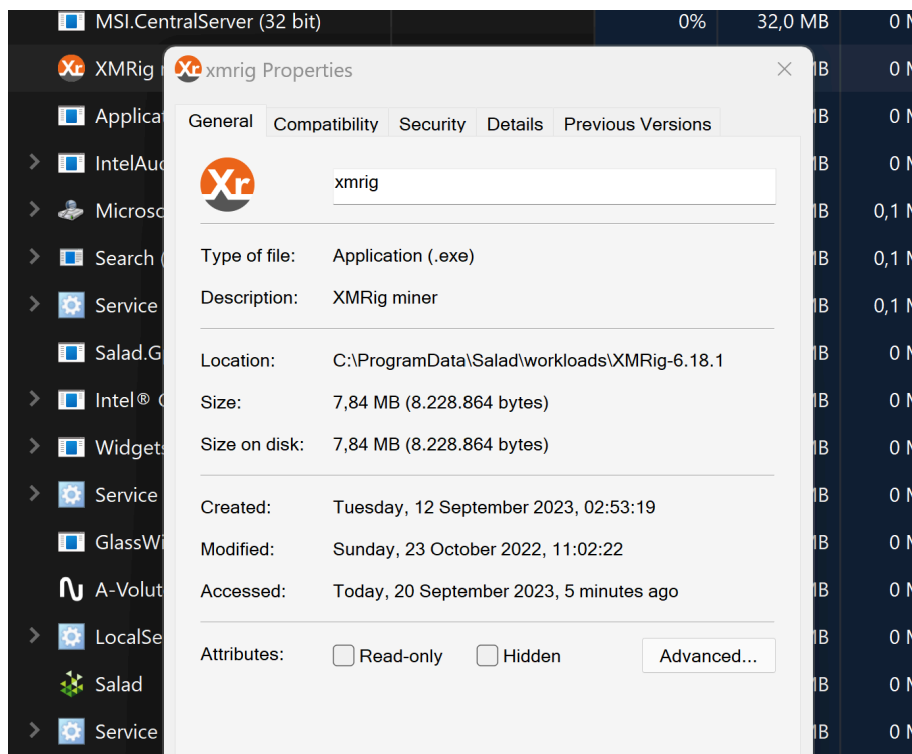


**Step 6 – Choose this program path and click browse.**

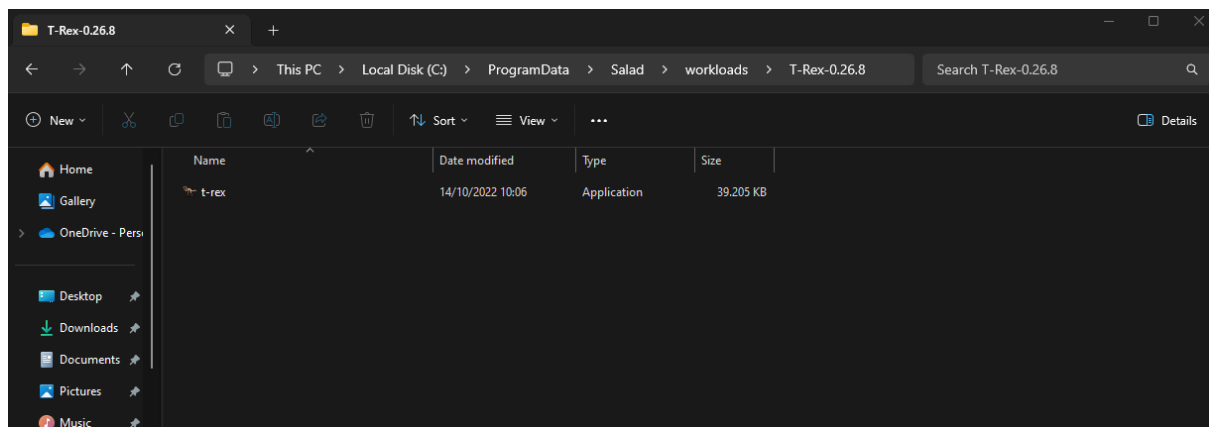
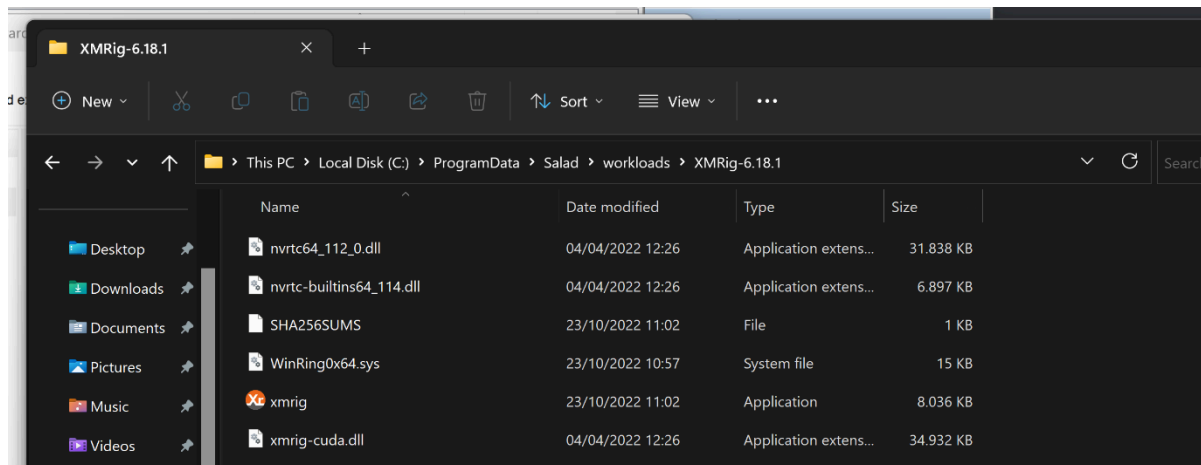


**Step 7 – Please go to the task manager (specifically the processes and CPU tab), locate the miner, and right-click to access its properties. Copy the location and go to file explorer and paste in the top bar.**

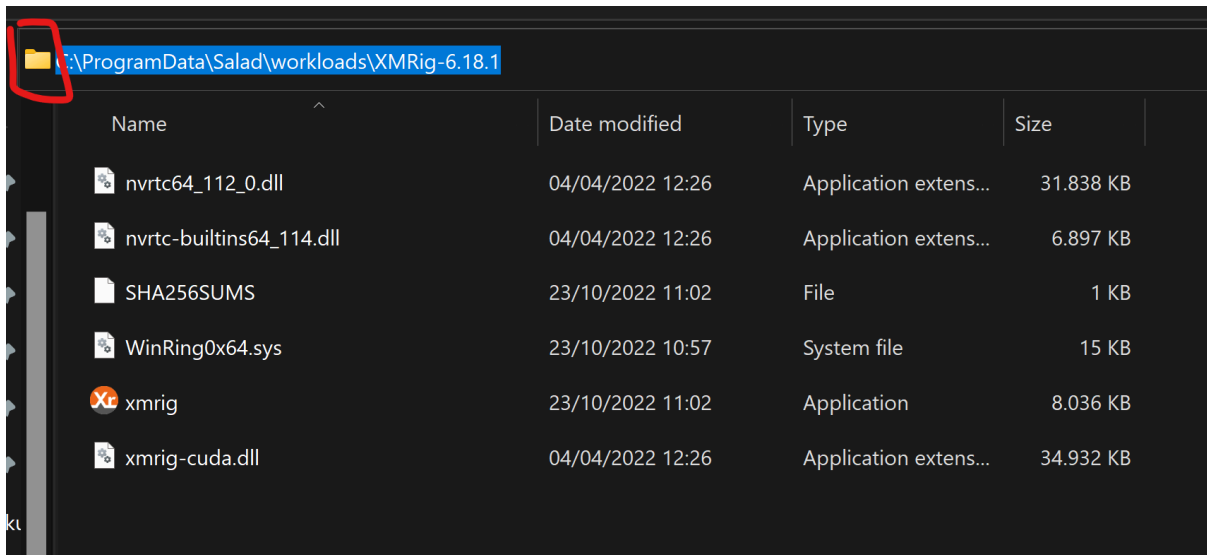
**Salad will send first the T-Rex miner. If you have blocked the T-Rex miner, Salad will stop it after X attempts and start the XMRig miner. Therefore, please ensure that you follow all these steps for XMRig as well. Also salad might add another trex miner (Version 0.25.x make sure to block it as well and other (future) versions)**



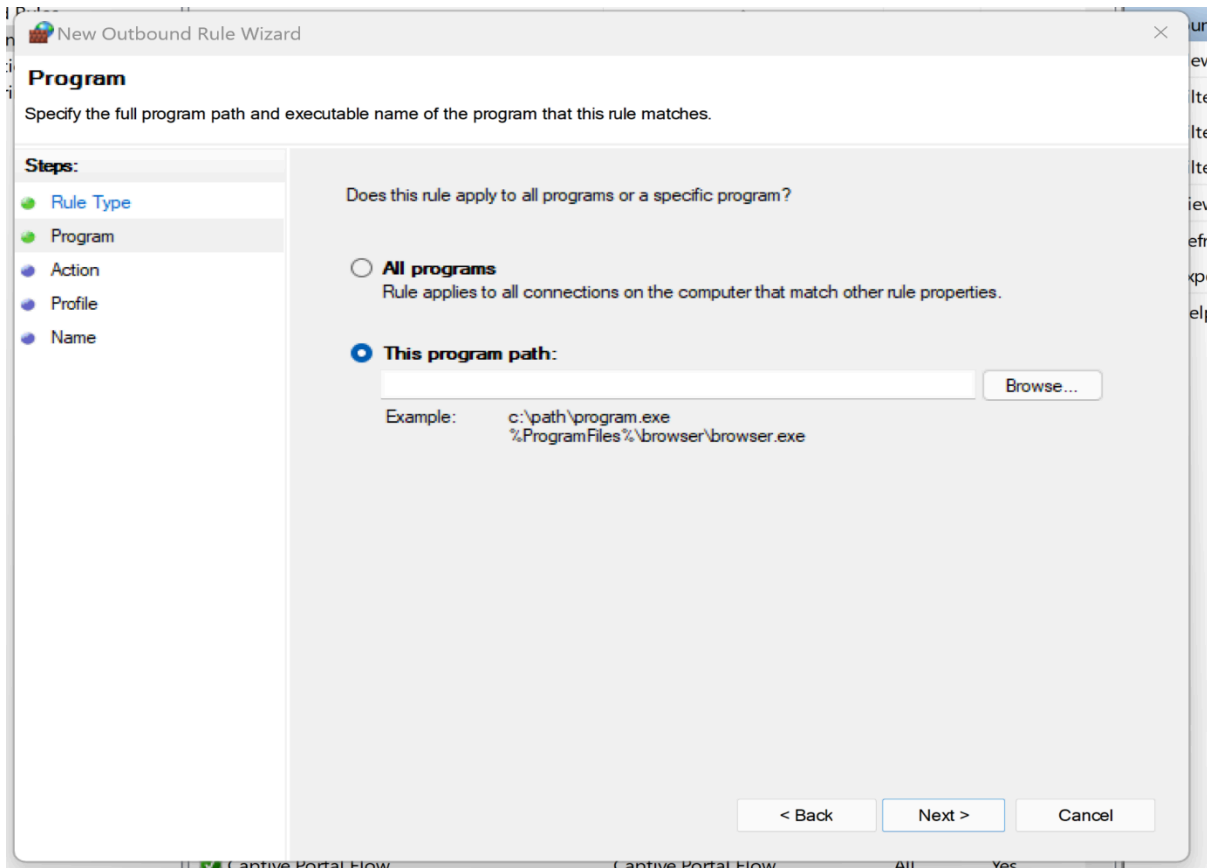
**Step 8 – After you have done step 7 correctly you should see XMRig or Trex miner version x**



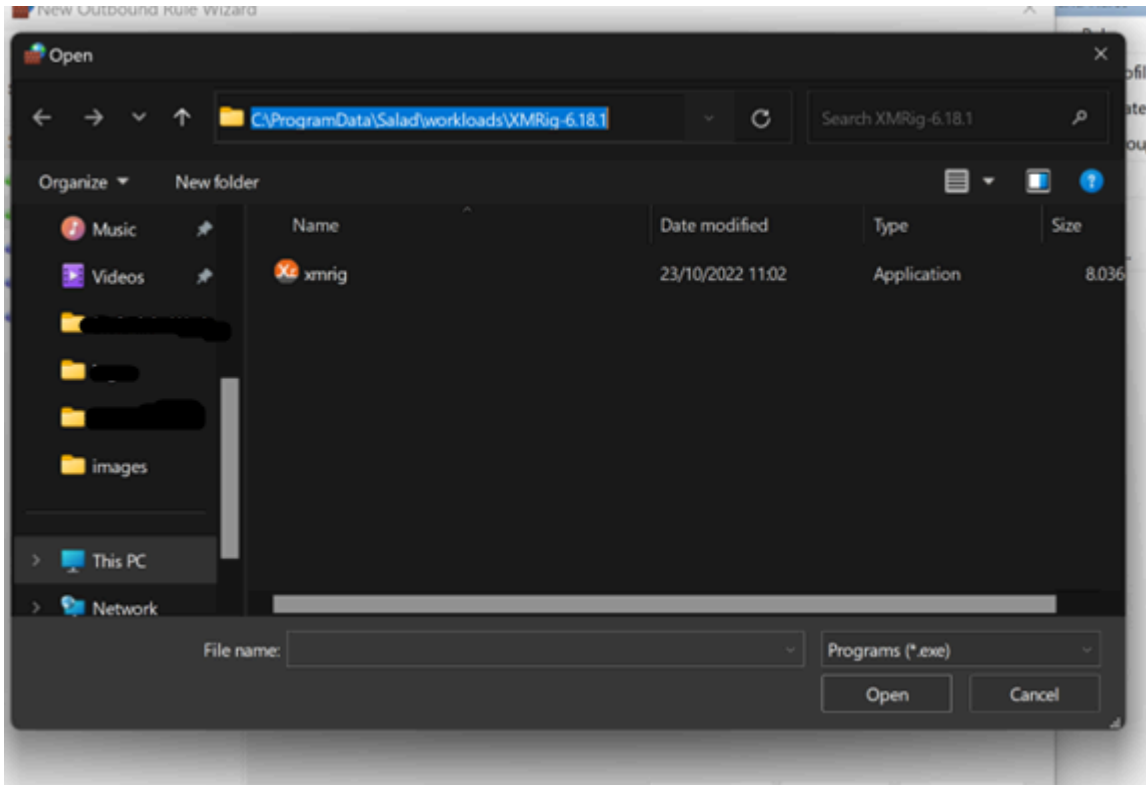
### Step 9 – Copy this file path



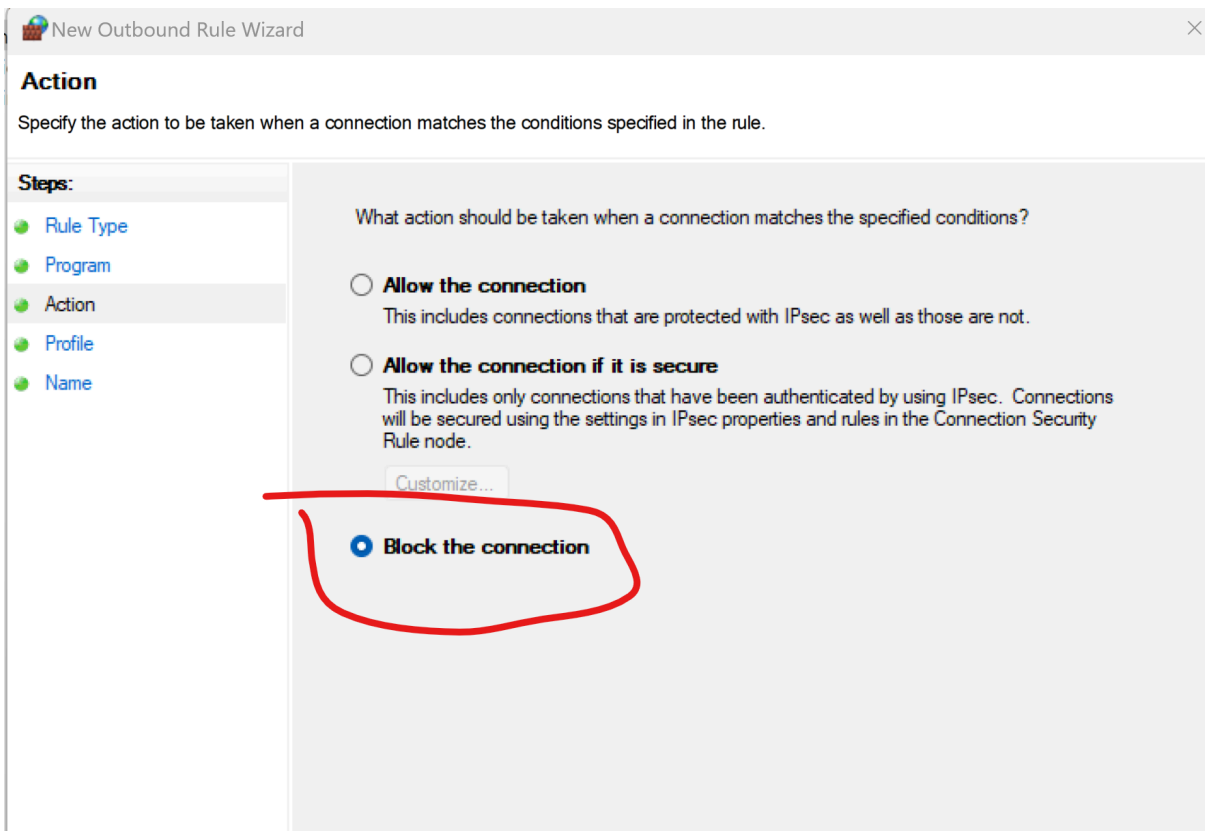
### Step 10 – Go back here and click on browse



### Step 11 – Now paste the file path you copied in the top bar and click on the program, after that click open corner right



**Step 12 – Make sure to choose Block the connection.**



**Step 13 – Make sure these 3 options are selected.**

ti  
ri

## Profile

Specify the profiles for which this rule applies.

### Steps:

- Rule Type
- Program
- Action
- Profile
- Name

When does this rule apply?

**Domain**

Applies when a computer is connected to its corporate domain.

**Private**

Applies when a computer is connected to a private network location, such as a home or work place.

**Public**

Applies when a computer is connected to a public network location.

**Step 14 – You can give it the name XMRig miner / Trex miner Version (x.x.x). Description can be ignored. With specify the version you can easily manage to see which versions you already blocked.**

**It's important to add the version in case salad falls back to a different version of the miner so you will have to block all the versions or in the future, new versions.**

### Name

Specify the name and description of this rule.

#### Steps:

- Rule Type
- Program
- Action
- Profile
- Name

Name:

Description (optional):

**Step 15 – After step 14 it should look like this.**

Name

- GlassWire Service Outbound
- Trex miner
- XMRig mining
- AllJoyn Router (TCP-Out)

**Step 16 – As you can see here the miner will still run, but it won't actually mine.**

Task Manager		Type a name, publisher, or PID to search					
Processes		Run new task End task					
	Name	Status	8% CPU	24% Memory	1% Disk	0% Network	14% GPU
	XMRig miner		0%	30,6 MB	0 MB/s	0 Mbps	0%
	Microsoft Office Click-to-Run...		0%	29,8 MB	0 MB/s	0 Mbps	0%
	Microsoft Management Cons...		0%	25,5 MB	0 MB/s	0 Mbps	0%
	Application Frame Host		0%	23,0 MB	0 MB/s	0 Mbps	0%
	IntelAudioService		0%	22,9 MB	0 MB/s	0 Mbps	0%
	Service Host: Windows Update		0%	22,1 MB	0 MB/s	0 Mbps	0%
	Microsoft Windows Search In...		0%	21,7 MB	0,1 MB/s	0 Mbps	0%
	Salad.GpuZ.App (32 bit)		0%	18,1 MB	0 MB/s	0 Mbps	0%
	Service Host: Windows Event ...		0%	18,0 MB	0,1 MB/s	0 Mbps	0%
	Intel® Graphics Command Ce...		0%	17,8 MB	0 MB/s	0 Mbps	0%
	Widgets (7)		0%	16,2 MB	0 MB/s	0 Mbps	0%
	GlassWire Computer Idle Mon...		0%	15,1 MB	0 MB/s	0 Mbps	0%
	Service Host: UtcSvc		0%	14,8 MB	0 MB/s	0 Mbps	0%
	A-Volute NS		0%	14,6 MB	0 MB/s	0 Mbps	0%

Also mentioning that it is completely normal that the salad application shows degraded / firewall issues due the miners having their connection blocked. I suggest disabling salad notifications within windows to prevent spam notifications.

**These steps have already been tested out before and should work with 0 issues. Incase of any problems feel free to dm me on discord (denizabbeel)**

Kind regards,

Deniz