

THE TITLE OF THE PAPER (CENTER, UPERCASE, Cambria 14 Bold)

The title of the paper should be concise and informative. Avoid abbreviations and formula where possible. It should be written clearly and concisely describing the contents of the research. Article should be in English

¹First Author Full Name, ²Second Author Full Name, ³Author-n (Center, Capitalize Each Words, Tahoma 12, Bold)

ARTICLE HISTORY

Received:

19 July 2025

Revised

23 July 2025

Accepted:

28 July 2025

Online available:

30 July 2025

Keywords (Tahoma 10):

Keyword a;

Keyword b;

Keyword c;

Keyword d;

Keyword e.

***Correspondence:**

Name:

E-mail:

ABSTRACT

(Tahoma11, UPERCASE, Bold, 1 spacing)

Introduction: The abstract comes after title page in the manuscript. Abstract must be integrated and independent which consist of introduction and clearly stated the purpose of research

Methods: Example, this research is a quantitative study that applies the Johansen Integration Test and Vector Error Correction Model to see the long-term impact and shock response on certain variables. **Results:** Report the main outcome(s)/findings including (where relevant) levels of statistical. Example, the findings indicate the existence of short-term and long-term causality between macroeconomic variables and the Indonesian Islamic stock index. Especially in the long run, industrial production index and inflation have a significant effect on ISSI, while the exchange rate, interest rates and SBIS have no significant effect on ISSI. **Conclusion**

and suggestion: Should relate to the study aims and hypotheses. However, the abstract should be written as a single paragraph without these headers. For this reason, references should be avoided. Also, non-standard or uncommon abbreviations should be avoided, but if essential they must be defined at their first mention in the abstract itself. Abstract must be written using 150 until 250 words which has no reference and accompanied keywords. (Tahoma 11, justify, 1 spacing)

¹Faculty of Economics and Business, Kader Bangsa University

²Affiliation (Department, Faculties, Institution/University)

Email: author^a; author^b (Center, lowercase, Tahoma 10)

INTRODUCTION-Heading 1 (Tahoma, 12, Bold, Align Left, UPERCASE)

State the objectives of the work and provide an adequate background, avoiding a detailed literature survey or a summary of the results. Explain how you addressed the problem and clearly state the aims of your study. As you compose the introduction, think of readers who are not experts in this field. Please describe in narrative format and not using sub-chapter. (Tahoma, 12, 1.15 Spacing, Justify)

LITERATURE REVIEW- Heading 1 (Tahoma, 12, Bold, Align Left, UPERCASE)

There are three points will be discussed in literature review, the basic theory, previous study and hypothesis from previous study, (Tahoma, 12, Justify,)

The traditional society– Heading 2 (Tahoma, 12, Bold, Capitalize Each Word)

The traditional society In Rostow’s development theories, the traditional society is they have economic activities by traditional method whether in production, distribution, and consumption activities. In Rostow’s point of view..... (Tahoma, 12, Justify,)

Previous Study and Hypothesis – Heading 2 (Tahoma, 12, Bold, Capitalize Each Word)

The preconditions for take-off In this phase, Rostow sees the society in transition phase, society optimizes themselves to strengthen and improve their economics..... (Tahoma, 12, Justify,)

RESEARCH METHODS – Heading 1 (Tahoma, 12, Bold, Align Left, UPERCASE)

Explain in detail about the research design, settings, time frame, variables, population, samples, sampling, instruments, data analysis, and information of ethical clearance fit test. The method of this paper is library method, library method is the method that emphasize the use of literature as the primary data source. This research is a quantitative study that applies the Johansen Integration Test and Vector Error Correction Model to see the long-term impact and shock response on certain variables...(Tahoma, 12, Justify)

Formulas using equation

$$Rt = \ln \ln (Pt - Pt - 1) + \frac{\alpha}{\beta} \dots\dots\dots (2)$$

RESULT AND ANALYSIS-Heading 1 (Tahoma, 12, Bold, Align Left, UPERCASE)



Result should be presented continuously start from main result until supporting results. Unit of measurement used should follow the prevailing international system. It also allowed to present diagram, table, picture, and graphic followed by narration of them.

Describe the significance of your findings. Consider the most important part of your paper. Do not be verbose or repetitive, be concise and make your points clearly. Follow a logical stream of thought; in general, interpret and discuss the significance of your findings in the same sequence you described them in your results section. Use the present verb tense, especially for established facts; however, refer to specific works or prior studies in the past tense. If needed, use subheadings to help organize your discussion or to categorize your interpretations into themes. The content of the discussion section includes: the explanation of results, references to previous research, deduction, and hypothesis. (Tahoma, 12, Justify)

Figures, tables, and diagram should be **editable** ones, table don't using picture

Table 1 (Center, Tahoma 10)
Consumption on Ramadhan (Center, Tahoma 10)

No.	Staple Food Ingredients	Consumption per capita (kg / capita)		
		2006	2007	2008
1.	Rice	83,24	80,56	81,52
2.	Corn	75,68	53,82	50,37
3.	Wheat	44,96	43,60	35,49
Total		203,88	182,98	167,38

Source:

Tahoma, 10, Single Spacing, Align Left, Capitalize Each Word)

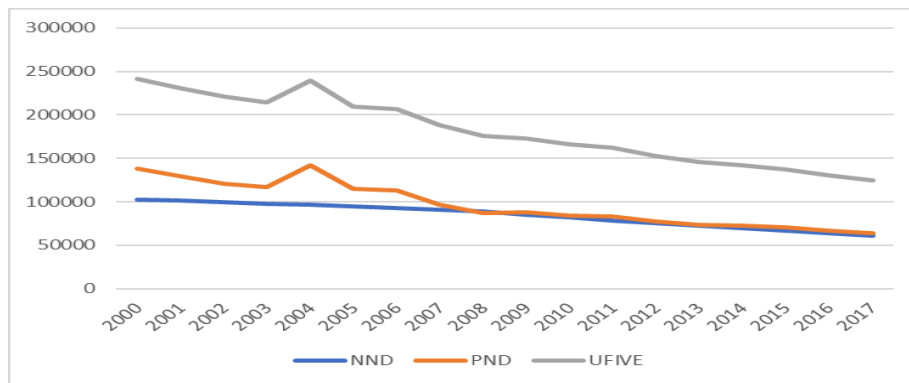


Figure 1. Tahoma,10, Single Spacing, center, Bold Capitalize Each Word)
Source: Tahoma,10, Single Spacing, Align Left, Capitalize Each Word)

CONCLUSION-Heading 1 (Tahoma, 12, Bold, Align Left, UPERCASE)

Conclusion should be explained clearly related to hypothesis and new findings. Suggestion might be added contains a recommendation on the research done or an input that can be used directly by consumer (Tahoma, 12, Justify)

REFERENCES-Heading 1 (Tahoma, 12, Bold, Align Left, UPERCASE)

The author-year notation system is required and completed. All reference mentioned should be written down in reference using APA 6th Edition style and arranged from A to Z. Articles have minimal 25 recent references (last 10 years) and 80% is journal. All cited references must be mentioned in in-text citation. If you are Mendeley user, please download the reference style here

<https://www.mendeley.com/guides/harvard-citation-guide>

- Elgari, M. A. (2003). Credit Risk in Islamic Banking and Finance. *Islamic Economic Studies*, 6(2), 1–22.
- Malik, M., Malik, A., & Mustafa, W. (2011). Controversies that make Islamic banking controversial: An analysis of issues and challenges. *American Journal of Social and Management Sciences*, 41–46. doi:10.5251/ajsms.2011.2.1.41.46
- Mukhtar, A., & Butt, M. M. (2012). Intention to choose Halal products: the role of religiosity. *Journal of Islamic Marketing*, 3(2), 108–120. doi:10.1108/17590831211232519
- Qaradhawi, Y. (2007). *Halal dan Haram*. Bandung: Penerbit Jabal.
- Rahardja, U., Wahid, S., & Haryani, N. (n.d.). *Analisis Kinerja Student Information Services Menggunakan Technology Acceptance Model (TAM)*. Raharja.ac.id. Retrieved from http://raharja.ac.id/raharja_file/file_jurnal/file/2020109.pdf
- Tariq, A. A. (2004). *Managing Financial Risks of Sukuk Structures*, (September), 1–86.
- Wilson, R. (2008). Innovation in the structuring of Islamic "sukuk" securities. *Humanomics*, 24(3), 170–181. doi:10.1108/08288660810899340