

Analysis Details

Details on Regression model predictors

In the multinomial model, we excluded any EA who gave more than one cause the “top cause” rank. 403 respondents chose multiple top priority causes and were excluded from this analysis. Running the regressions with or without these multi-responders did not appear to affect the headline results, and only altered the probability of the effect of gender by less than 1%, but not the direction or significance. Without these 403 observations, we created an outcome variable for “top priority cause”. For the ordered model, we took the full set of observations and used a five-point scale (ranging from (1) ‘I do not think any resources should be devoted to this cause’, to (5) ‘This cause should be the top priority’), for each cause. As measures of engagement in discussions, we created a variable of those who were members of the EA Facebook group, of both LessWrong and the EA Forum, those who were members of only one of these, and those who were members of neither. As a measure of diet, we looked at stated diets and grouped them into “eat some meat”, “vegetarian”, and “vegan”. As measures of demographics we looked at gender, race, education, and age (grouped into “13-17”, “18-24”, “25-34”, “35-44”, “45-54”, “55-64”, and “65+”). Due to the small number of non-binary persons in the sample, it was not appropriate to infer based on results. Therefore, we used a simple binary-gender where an EA stated Male or Female. Race and education level were not powerful additions to the early models. We looked at whether a person had said they had received coaching from 80,000 Hours or not, their career type (earning to give, direct work/non-profit/research/other), and their educational discipline. Only 80,000 Hours coaching and certain academic disciplines appeared to improve the model or add explanatory power. We also included a number of routes through which individuals became involved in EA (dummy variables for Personal Contact, Local EA Group, TLYCS, SSC, GWWC, 80,000 Hours, and Animal Charity Evaluators). Levels of income and donation amounts didn’t offer explanatory power for cause preferences, but they are discussed separately in our [donations post](#). We also ran one model using the combined Long-Term Future category (AI Risk, Nuclear Security, Biosecurity, Other X-risk).

Across all the 11 causes there were some predictors which violated the proportional odds assumption for the Multinomial model. Using models where we relaxed the parallel lines assumption didn’t significantly increase the Pseudo R^2 , hence the cautionary language around our estimates and reliance more on descriptive stats.

Regression Tables

Multinomial Regression of Top Priority Cause, Global Poverty as Base Category

Predictors	Animal Welfare	Cause Prioritisation	Biosecurity	Climate Change	Nuclear Security	AI Risk	Mental Health	Rationality	Meta	Other X-Risk
LessWrong Only	-0.841 (0.787)	0.411 (0.352)	-0.413 (0.799)	-0.781 (0.557)	-15.83 (2,332)	1.334*** (0.286)	0.920 (0.738)	0.0103 (0.526)	0.141 (0.537)	0.579 (0.608)
EA Forum Only	0.298 (0.373)	0.199 (0.332)	1.115** (0.562)	-0.0659 (0.425)	-16.08 (2,239)	0.749** (0.297)	1.090 (0.669)	0.596 (0.427)	0.962** (0.381)	0.679 (0.528)
LessWrong and EA Forum	-0.420 (0.643)	1.225*** (0.416)	0.148 (1.109)	-14.49 (930.5)	-15.87 (3,136)	2.277*** (0.361)	-14.36 (2,092)	1.330** (0.559)	1.152** (0.509)	1.404** (0.680)
EA Facebook	-0.150 (0.278)	0.118 (0.229)	-0.381 (0.462)	-1.017*** (0.246)	0.543 (0.688)	0.0477 (0.211)	-0.754 (0.545)	-0.414 (0.288)	-0.0132 (0.321)	0.785* (0.418)
Women	-0.376 (0.272)	-0.436* (0.236)	0.00408 (0.445)	0.315 (0.223)	-0.910 (0.813)	-1.007*** (0.245)	0.893* (0.482)	-0.545* (0.319)	-0.871** (0.362)	-0.371 (0.427)
Vegetarian	2.100*** (0.532)	0.304 (0.247)	0.130 (0.487)	-0.0576 (0.275)	0.803 (0.800)	0.0571 (0.230)	0.568 (0.526)	-0.466 (0.365)	-0.127 (0.363)	-0.643 (0.454)
Vegan	4.815*** (0.502)	1.210*** (0.286)	0.319 (0.678)	0.816*** (0.315)	2.008** (0.786)	1.084*** (0.271)	-0.665 (1.089)	0.481 (0.391)	1.349*** (0.358)	-0.983 (0.765)
80,000 Hours Coaching	0.353 (0.375)	0.897*** (0.277)	0.681 (0.534)	0.314 (0.363)	0.0711 (1.109)	0.438* (0.263)	0.887 (0.608)	0.301 (0.404)	0.507 (0.365)	0.224 (0.502)
EA Shifted Career Path	0.464* (0.277)	0.502** (0.231)	0.163 (0.481)	-0.542* (0.318)	1.182* (0.662)	0.932*** (0.205)	0.877* (0.531)	0.0990 (0.318)	1.114*** (0.304)	0.267 (0.401)
Age Group	0.0726 (0.141)	0.0187 (0.120)	0.0478 (0.232)	0.160 (0.0985)	0.306 (0.309)	-0.325** (0.127)	0.0380 (0.258)	0.112 (0.128)	-0.143 (0.186)	-0.478* (0.255)
Year first heard of EA	-0.0283 (0.0617)	0.113** (0.0559)	0.00488 (0.104)	0.0338 (0.0537)	0.103 (0.168)	2.86e-05 (0.0483)	0.0622 (0.129)	0.0641 (0.0672)	-0.0478 (0.0672)	0.129 (0.103)
GWWC	-0.568** (0.284)	-0.515** (0.237)	-0.939* (0.523)	-0.520** (0.249)	-0.455 (0.721)	-0.807*** (0.224)	-2.433** (1.059)	-0.520* (0.311)	0.216 (0.293)	-0.0972 (0.401)
SSC	-0.212 (0.447)	0.0991 (0.264)	0.735 (0.463)	-0.572* (0.321)	1.003 (0.745)	0.0860 (0.235)	-0.978 (0.815)	-0.883** (0.413)	0.309 (0.359)	-0.628 (0.527)
Personal Contact	0.391 (0.274)	0.858*** (0.226)	0.544 (0.458)	0.137 (0.277)	0.757 (0.679)	0.649*** (0.209)	-0.112 (0.570)	-0.0171 (0.336)	0.491 (0.304)	0.305 (0.397)
Local EA Group	-0.102 (0.343)	0.144 (0.273)	0.143 (0.558)	-0.375 (0.382)	-0.883 (1.120)	0.0562 (0.258)	0.653 (0.581)	-0.747 (0.506)	-0.0224 (0.379)	-0.149 (0.500)
80,000 Hours	0.122 (0.282)	0.647*** (0.221)	0.691 (0.439)	0.762*** (0.235)	0.274 (0.694)	0.815*** (0.204)	0.824 (0.521)	0.616** (0.288)	0.454 (0.300)	0.273 (0.385)
TLYCS	-0.723* (0.439)	-0.654 (0.421)	-16.03 (1,844)	0.184 (0.329)	0.529 (0.848)	-0.528 (0.400)	-15.35 (1,653)	-1.547** (0.751)	-0.0886 (0.464)	-1.480 (1.051)
Constant	-3.830*** (0.888)	-2.982*** (0.685)	-3.359** (1.314)	-1.705*** (0.640)	-6.588*** (2.048)	-0.911 (0.630)	-4.174*** (1.537)	-2.156*** (0.794)	-2.325** (0.920)	-2.449* (1.284)
Pseudo R ²	0.1696	0.1696	0.1696	0.1696	0.1696	0.1696	0.1696	0.1696	0.1696	0.1696
Observations	1,280	1,280	1,280	1,280	1,280	1,280	1,280	1,280	1,280	1,280

Standard errors in parentheses
 *** p<0.01, ** p<0.05, * p<0.1

Order Logistic Regression of Full-Scale Cause Preference

Predictors	Global Poverty	AI Risk	Cause Prioritisation	Animal Welfare	Climate Change	Mental Health	Rationality	Meta Charities	Nuclear Security	Biosecurity	Other X-Risk
LessWrong Only	-0.834*** (0.185)	1.320*** (0.189)	0.189 (0.183)	-0.612*** (0.182)	-0.624*** (0.182)	-0.540*** (0.185)	0.314* (0.180)	0.0233 (0.182)	-0.0282 (0.181)	0.165 (0.190)	0.434*** (0.179)
EA Forum Only	-0.582*** (0.157)	0.192 (0.156)	0.183 (0.156)	0.0750 (0.156)	-0.470*** (0.154)	-0.0929 (0.158)	0.231 (0.151)	0.359*** (0.160)	-0.171 (0.155)	0.261 (0.160)	0.130 (0.160)
LessWrong and EA Forum	-1.420*** (0.203)	1.701*** (0.213)	0.716*** (0.199)	-0.422*** (0.200)	-0.559*** (0.191)	-0.318 (0.204)	0.657*** (0.196)	0.394* (0.202)	0.119 (0.192)	0.345* (0.209)	0.532*** (0.206)
EA Facebook	0.0379 (0.113)	0.396*** (0.113)	0.449*** (0.115)	0.364*** (0.113)	-0.499*** (0.112)	0.158 (0.115)	0.161 (0.112)	0.492*** (0.116)	0.154 (0.114)	0.129 (0.115)	0.273*** (0.115)
Women	0.506*** (0.118)	-0.596*** (0.118)	-0.301** (0.124)	-0.00610 (0.119)	0.656*** (0.118)	0.267** (0.120)	-0.290*** (0.118)	-0.149 (0.123)	-0.0783 (0.120)	-0.158 (0.120)	-0.572*** (0.122)
Vegetarian	-0.169 (0.129)	0.0378 (0.125)	-0.00390 (0.129)	1.224*** (0.128)	-0.282*** (0.125)	0.0276 (0.129)	-0.228* (0.126)	-0.0594 (0.129)	0.0194 (0.128)	-0.0158 (0.130)	0.0303 (0.129)
Vegan	-0.974*** (0.132)	0.292** (0.132)	0.0174 (0.135)	2.541*** (0.160)	-0.499*** (0.131)	-0.188 (0.134)	-0.0608 (0.130)	0.159 (0.136)	-0.0315 (0.133)	-0.177 (0.136)	-0.0640 (0.135)
Non-Left	-0.281** (0.120)	0.0643 (0.122)	0.176 (0.123)	-0.134 (0.121)	-0.597*** (0.121)	-0.199 (0.121)	0.0580 (0.118)	-0.0445 (0.123)	-0.0780 (0.122)	0.0719 (0.124)	-0.0565 (0.123)
Non-White	-0.399 (0.0795)	0.00168 (0.0814)	0.0374 (0.0822)	0.0970 (0.0800)	0.0294 (0.0780)	0.0446 (0.0832)	-0.0449 (0.0806)	0.0758 (0.0842)	-0.0145 (0.0789)	-0.0645 (0.0806)	-0.115 (0.0822)
80,000 Hours Coached	-0.285** (0.139)	0.192 (0.139)	0.307** (0.143)	-0.0178 (0.147)	-0.166 (0.139)	-0.0468 (0.144)	-0.000169 (0.138)	0.143 (0.143)	0.128 (0.141)	0.313** (0.145)	0.0751 (0.141)
EA Shifted Career Path	-0.455*** (0.115)	0.660*** (0.115)	0.441*** (0.117)	0.0147 (0.114)	-0.484*** (0.114)	0.262** (0.118)	0.158 (0.113)	0.108 (0.117)	0.122 (0.115)	0.406*** (0.118)	0.173 (0.119)
Age Group	0.0176 (0.0547)	-0.292*** (0.0557)	-0.0212 (0.0580)	0.0848 (0.0558)	0.170*** (0.0550)	0.139** (0.0569)	0.194*** (0.0552)	-0.157*** (0.0580)	-0.000712 (0.0566)	-0.163*** (0.0563)	-0.170*** (0.0583)
Year First Heard of EA	0.00220 (0.0245)	0.00230 (0.0248)	0.0548** (0.0256)	-0.0219 (0.0252)	0.147*** (0.0247)	0.106*** (0.0257)	0.125*** (0.0249)	-0.0497* (0.0255)	0.0435* (0.0253)	0.0315 (0.0255)	-0.00366 (0.0254)
GWWC	0.518*** (0.115)	-0.184 (0.112)	-0.0219 (0.116)	-0.000152 (0.113)	0.321*** (0.112)	0.00404 (0.113)	-0.125 (0.113)	-0.107 (0.116)	-0.00783 (0.113)	-0.0819 (0.116)	-0.0997 (0.115)
Slate Star Codex	0.333** (0.138)	0.0547 (0.138)	-0.219 (0.140)	-0.106 (0.136)	-0.475*** (0.138)	-0.352** (0.138)	-0.357*** (0.136)	-0.0435 (0.140)	0.0108 (0.139)	-0.0912 (0.143)	-0.0742 (0.139)
Personal Contact	-0.388*** (0.114)	0.404*** (0.113)	0.121 (0.116)	-0.137 (0.113)	-0.189* (0.112)	-0.0489 (0.115)	-0.00615 (0.112)	0.130 (0.116)	0.000824 (0.114)	0.0511 (0.116)	0.160 (0.115)
Local EA Group	0.193 (0.145)	0.0171 (0.146)	0.230 (0.145)	0.253* (0.143)	-0.137 (0.141)	0.229 (0.147)	-0.329** (0.141)	0.203 (0.145)	-0.0223 (0.145)	0.0546 (0.148)	-0.0156 (0.146)
80,000 Hours	-0.516*** (0.111)	0.600*** (0.111)	0.424*** (0.114)	-0.00699 (0.110)	0.330*** (0.110)	0.275** (0.112)	0.357*** (0.110)	0.181 (0.114)	0.302*** (0.111)	0.388*** (0.113)	0.634*** (0.114)
Animal Charity Evaluators				1.497*** (0.221)							
TLYCS	0.695*** (0.182)	-0.316* (0.178)	-0.302 (0.192)	0.0511 (0.182)	0.385** (0.182)	-0.115 (0.179)	-0.419** (0.178)	-0.0468 (0.187)	0.0581 (0.188)	-0.00383 (0.184)	-0.441** (0.188)
Philosophy	-0.266* (0.143)		-0.206 (0.146)	0.235 (0.145)			-0.0984 (0.139)	0.0370 (0.151)			
Social Science	0.00295 (0.140)		0.0470 (0.145)	-0.0146 (0.140)	0.198 (0.137)				0.0741 (0.139)		
Computer Science		-0.122 (0.119)									
Mathematics		-0.00525 (0.132)									
Psychology						0.317* (0.186)					
Constant cut1	-5.324*** (0.399)	-2.886*** (0.359)	-3.146*** (0.401)	-1.693*** (0.344)	-1.764*** (0.336)	-1.138*** (0.352)	-1.326*** (0.345)	-3.976*** (0.391)	-1.946*** (0.346)	-3.536*** (0.376)	-2.922*** (0.358)
Constant cut2	-3.153*** (0.347)	-1.024*** (0.344)	-0.383 (0.350)	0.267 (0.338)	0.00667 (0.329)	1.100*** (0.347)	0.766** (0.336)	-1.569*** (0.352)	0.0947 (0.339)	-1.341*** (0.346)	-1.073*** (0.345)
Constant cut3	-1.518*** (0.336)	0.255 (0.343)	1.257*** (0.351)	1.943*** (0.343)	1.361*** (0.330)	2.847*** (0.355)	2.368*** (0.342)	0.369 (0.349)	1.805*** (0.343)	0.463 (0.344)	0.475 (0.345)
Constant cut4	0.475 (0.333)	2.324*** (0.352)	3.447*** (0.364)	4.548*** (0.364)	3.700*** (0.348)	5.823*** (0.428)	4.686*** (0.367)	3.068*** (0.370)	5.337*** (0.452)	4.222*** (0.399)	3.792*** (0.394)
Observations	1,420	1,387	1,320	1,408	1,396	1,339	1,381	1,333	1,340	1,360	1,317
Pseudo R2	0.0902	0.104	0.0447	0.137	0.0914	0.0254	0.0246	0.0318	0.00734	0.0290	0.0395

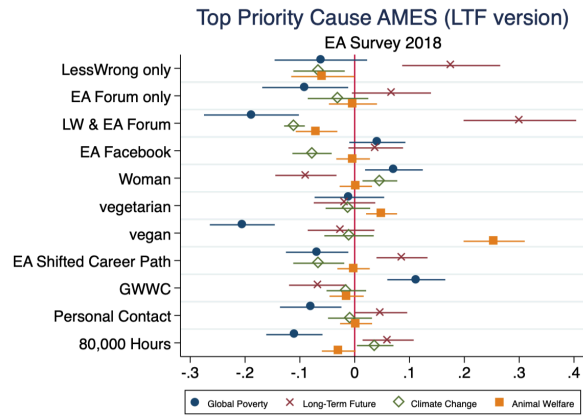
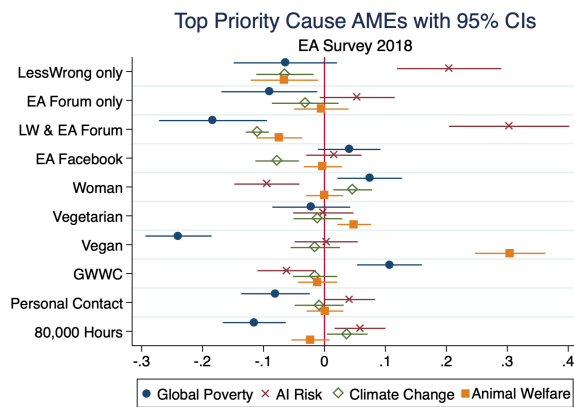
Standard errors in parentheses
 *** p<0.01, ** p<0.05, * p<0.1

Multinomial Regression of Top Priority Cause (Long-Term Future combined), Global Poverty as Base Category

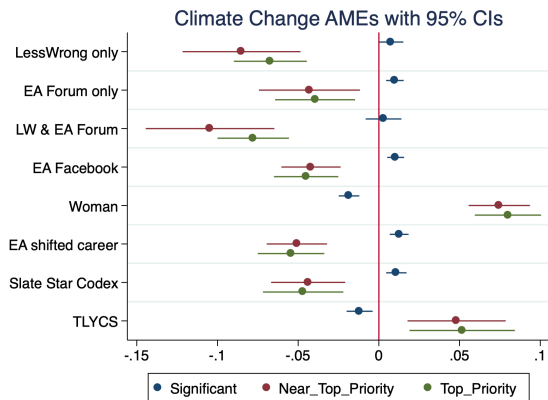
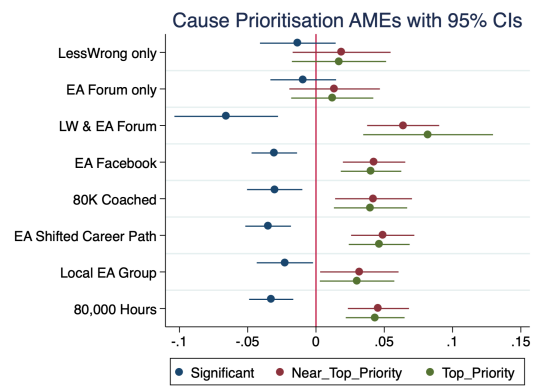
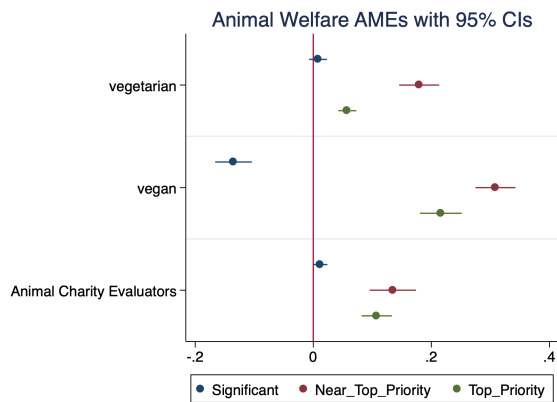
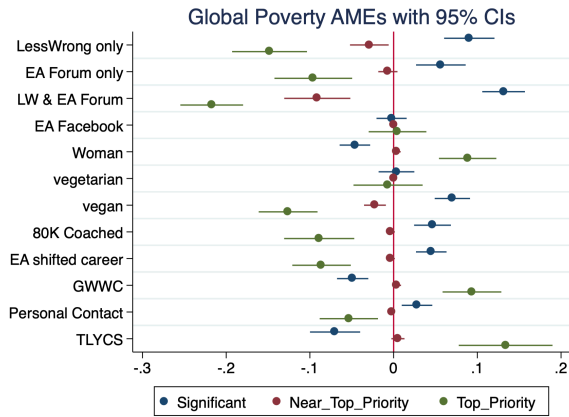
Predictors	Animal Welfare	Cause Prioritisation	Climate Change	Mental Health	Improving Rationality	Meta Charities	Long-Term Future
LessWrong Only	-0.795 (0.787)	0.379 (0.352)	-0.793 (0.557)	0.888 (0.738)	-0.0117 (0.526)	0.0783 (0.537)	0.962*** (0.266)
EA Forum Only	0.353 (0.383)	0.219 (0.332)	-0.0514 (0.425)	1.048 (0.669)	0.610 (0.428)	1.005*** (0.384)	0.687*** (0.271)
LessWrong and EA Forum	-0.388 (0.642)	1.202*** (0.416)	-13.03 (450.5)	-12.95 (1,003)	1.309** (0.559)	1.135** (0.511)	1.959*** (0.347)
EA Facebook	-0.150 (0.288)	0.129 (0.229)	-1.021*** (0.246)	-0.746 (0.545)	-0.412 (0.288)	-0.0129 (0.322)	0.118 (0.187)
Women	-0.324 (0.280)	-0.414* (0.236)	0.313 (0.223)	0.879** (0.482)	-0.545* (0.319)	-0.872** (0.365)	-0.775*** (0.208)
Vegetarian	1.911*** (0.537)	0.254 (0.248)	-0.100 (0.276)	0.550 (0.525)	-0.508 (0.367)	-0.270 (0.369)	-0.0472 (0.208)
Vegan	4.390*** (0.507)	1.081*** (0.292)	0.720** (0.323)	-0.616 (1.092)	0.382 (0.403)	1.049*** (0.373)	0.791*** (0.256)
80,000 Hours Coaching	0.327 (0.384)	0.893*** (0.277)	0.324 (0.364)	0.885 (0.608)	0.296 (0.405)	0.509 (0.366)	0.427* (0.247)
EA Shifted Career Path	0.320 (0.287)	0.481*** (0.232)	-0.542* (0.319)	0.909* (0.532)	-0.542* (0.320)	1.087*** (0.306)	0.778*** (0.188)
Age Group	-0.0542 (0.150)	0.0165 (0.120)	0.152 (0.0994)	0.0446 (0.259)	0.107 (0.128)	-0.164 (0.186)	-0.256** (0.108)
Year First Heard of EA	-0.0754 (0.0636)	0.113** (0.0559)	0.0316 (0.0537)	0.0582 (0.129)	0.0618 (0.0672)	-0.0575 (0.0676)	0.0233 (0.0437)
GWWC	-0.645** (0.294)	-0.532** (0.237)	-0.538** (0.249)	-2.410** (1.059)	-0.545* (0.312)	0.179 (0.295)	-0.740*** (0.198)
Slate Star Codex	-0.380 (0.459)	0.0919 (0.264)	-0.591* (0.321)	-0.981 (0.816)	-0.890** (0.413)	0.276 (0.358)	0.107 (0.212)
Personal Contact	0.417 (0.282)	0.850*** (0.226)	0.138 (0.278)	-0.127 (0.572)	-0.0187 (0.336)	0.497 (0.306)	0.592*** (0.191)
Local EA Group	-0.0416 (0.352)	0.140 (0.273)	-0.393 (0.384)	0.667 (0.586)	-0.756 (0.506)	-0.0422 (0.381)	0.00850 (0.238)
80,000 Hours	-0.0266 (0.295)	0.617*** (0.221)	0.746*** (0.235)	0.807 (0.518)	0.597** (0.288)	0.388 (0.302)	0.691*** (0.184)
TLYCS	-0.982** (0.463)	-0.716* (0.423)	0.138 (0.330)	-14.03 (864.3)	-1.588** (0.751)	-0.223 (0.475)	-0.691* (0.356)
Animal Charity Evaluators	2.438*** (0.488)	1.141** (0.542)	1.084* (0.579)	-13.65 (2,046)	1.080 (0.744)	1.943*** (0.574)	0.778 (0.526)
Constant	-3.031*** (0.910)	-2.952*** (0.688)	-1.653*** (0.645)	-4.143*** (1.530)	-2.109*** (0.797)	-2.145** (0.923)	-0.696 (0.561)
Observations	1,280	1,280	1,280	1,280	1,280	1,280	1,280

Standard errors in parentheses
*** p<0.01, ** p<0.05, * p<0.1

Multinomial AMEs (largest, statistically significant effect sizes only)



Ordinal Regression AMEs (largest, statistically significant effect sizes only)



Details on MCA

We created a combined cause ranking of three levels (top, med, and low) for each cause, and then ran a multiple correspondence analysis on factors of membership, involvement, gender, diet, politics and career coaching, using the R library("FactoMineR"). The proportion of variance explained by the first two synthetic axes was ~13% (see below). In addition, the contribution of the the variables to the total inertia was examined (where the reference line corresponds to the expected value if the contribution where uniform). For

both axes, the top 20 variables were among those likely to have a larger than average impact on axis construction. Note that cause preference was not used for the determination of the principal dimensions.

