



Sharpham House Accessibility Statement

This document updated: *February 2024*

1. Introduction

The Sharpham Trust aims to ensure that all employees, guests and others who use Sharpham House are treated equally and according to their needs.

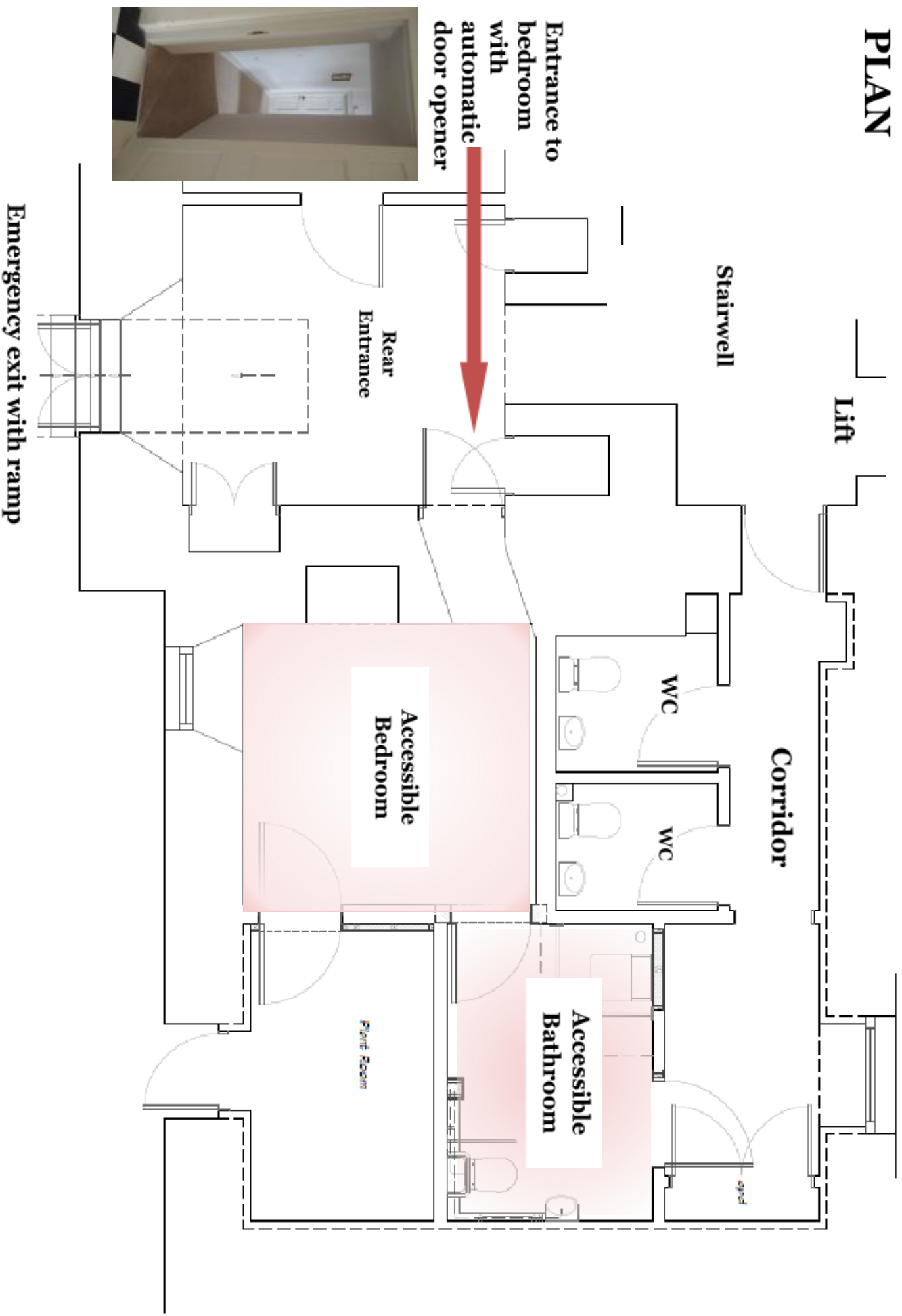
The Trust welcomes people with disabilities and has developed this Access Statement to offer the widest possible access and participation for those visiting or staying in Sharpham House.

Sharpham House is a Grade I-listed Palladian villa constructed in 1770 and as such there are certain limitations that prevent the building from complying with modern access requirements. The Trust is endeavouring to make the building as accessible as possible given these constraints. We have, for example, installed a lift in the House.

2. Wheelchair Users

Thanks to funding from The Clare Milne Trust we have created an accessible bedroom with an attached accessible bathroom on the ground floor of the main House. The room is wheelchair accessible but prospective users **are advised to check** whether it meets their needs before booking.

PLAN



The bedroom features an accessible bed – a Casa Med Classic FS with side rails, featuring:

- Integral wooden side rails included as standard for additional safety
- Dewert® motor, handset and controls ensuring highest levels of functionality and reliability
- Easy to use 8 button handset with raised buttons for users with limited dexterity or visual impairment
- Height adjustable between 40 – 80cm (16" – 31") to allow easy care/positioning for users
- Dual motor headrest and knee brake adjustment allows both independent movement as well as synchronised movement of the head and foot rests
- Electric backrest, leg rest, knee brake and lower leg elevation are easy to operate using the handset
- Quick action bolt mechanism allows emergency lowering of the headrest
- Four 10cm (4") braked castors allow secure positioning
- Four section mattress support provides multiple profiling positions
- Extra high side rails available for added safety



<https://drivedevilbiss.co.uk/products/casa-med-classic-fs-with-side-rails>

The bathroom features a wheelchair accessible shower and hand basin.



Guests who need to book the accessible bedroom and bathroom can book this online at www.sharphamtrust.org

3. Hearing Impairment

The Trust owns a Conversor Pro assistive listening device which visitors are welcome to use on request. To reserve, contact the Programme Manager on programme@sharphamtrust.org
www.conversorproducts.com



4. Assistance Dogs

A 'Recognised Assistance Dog' is one which has been specifically trained to assist a disabled person and has been qualified by one of the charitable organisations registered as members of Assistance Dogs UK (Canine Partners, Dog A.I.D, Dogs for the Disabled, Hearing Dogs for Deaf People, Support Dogs, Guide Dogs, and Medical Detection Dogs).

The following are allowed in the House:

- Assistance dogs used for fetching and carrying people with manipulative and ambulatory impairments
- Support dogs for stress and anxiety
- Guide dogs for visually impaired and blind people
- Hearing dogs used by low hearing and deaf people.

Other than the above, **no pets are allowed** in the House and grounds.

5. Pre-arrival & how to find us

- For assistance prior to arrival contact the House Manager on housemanager@sharphamtrust.org
- Our address is:
Sharpham House, Ashprington, Totnes, South Devon, TQ9 7UT
www.sharphamtrust.org/about-us/how-to-find-us

There is no regular bus service but taxis are available from Totnes.
We recommend that you book in advance.

See [here for a list of available taxis](#)

Totnes has a mainline train station and is well serviced by buses

6. Arrival & parking facilities

- For those staying at Sharpham House, there are limited car parking spaces located behind the House adjacent to the Coach House which includes 2 disabled bays.
- We usually do **not** allow cars to park for extended periods in front of the House. If you need to do so please contact the House Manager prior to arrival via housemanager@sharphamtrust.org.

7. Main entrance & reception



- On arrival, taxis or cars may drive around to the front of the House to drop luggage and allow visitors to enter through the **front door, which is wheelchair accessible via a small ramp.**
- On arrival, visitors are usually asked to enter through the front door via the Entrance Hall where you will be met by a member of staff and shown to your room.
- The main front door is the only entrance into the House without steps. It consists of double doors which can be opened to allow for wheelchair access.
- Much of the flooring on the ground floor consists of flagstones which can be uneven.

8. Stairs & lift

- The Entrance Hall opens onto the main Staircase from which all floors are accessible.
- The lift is accessible from the ground floor and is not fully DDA compliant due to the constraints of the listed building. The lift car measures 112cm (wide) x 92cm (deep), the entrance is 80cm wide. The maximum weight load is 375kg. Electric wheelchairs, due to their weight and size, are likely to be incompatible with our lift. We suggest if you use an electric wheelchair that you bring a manual one too to be able to utilise the lift. Potential visitors should check if this meets their needs prior to arrival or contact the House Manager on housemanager@sharphamtrust.org
- The back 'Servant's Stairs' are close to the lift on the north side of the House.



The back staircase



The lift car

9. Dining Room

- The Dining Room is located on the ground-floor close to the kitchen.
- Its floor is smooth wood.
- There is a sun patio accessible from the Dining Room with one step, or it can be accessed through the front of the House by wheelchair via a small ramp.
- The Toasting Room is adjacent to the Dining Room from where teas and coffees are served.



10. Bathrooms & Toilets

- The House contains 5 en-suite bathrooms (including the accessible bathroom) and 8 separate bathrooms
- There are 2 toilets on the ground-floor and the accessible bathroom attached to the Clare Milne bedroom
- Guests who have specific needs must discuss these prior to booking

11. Bedrooms

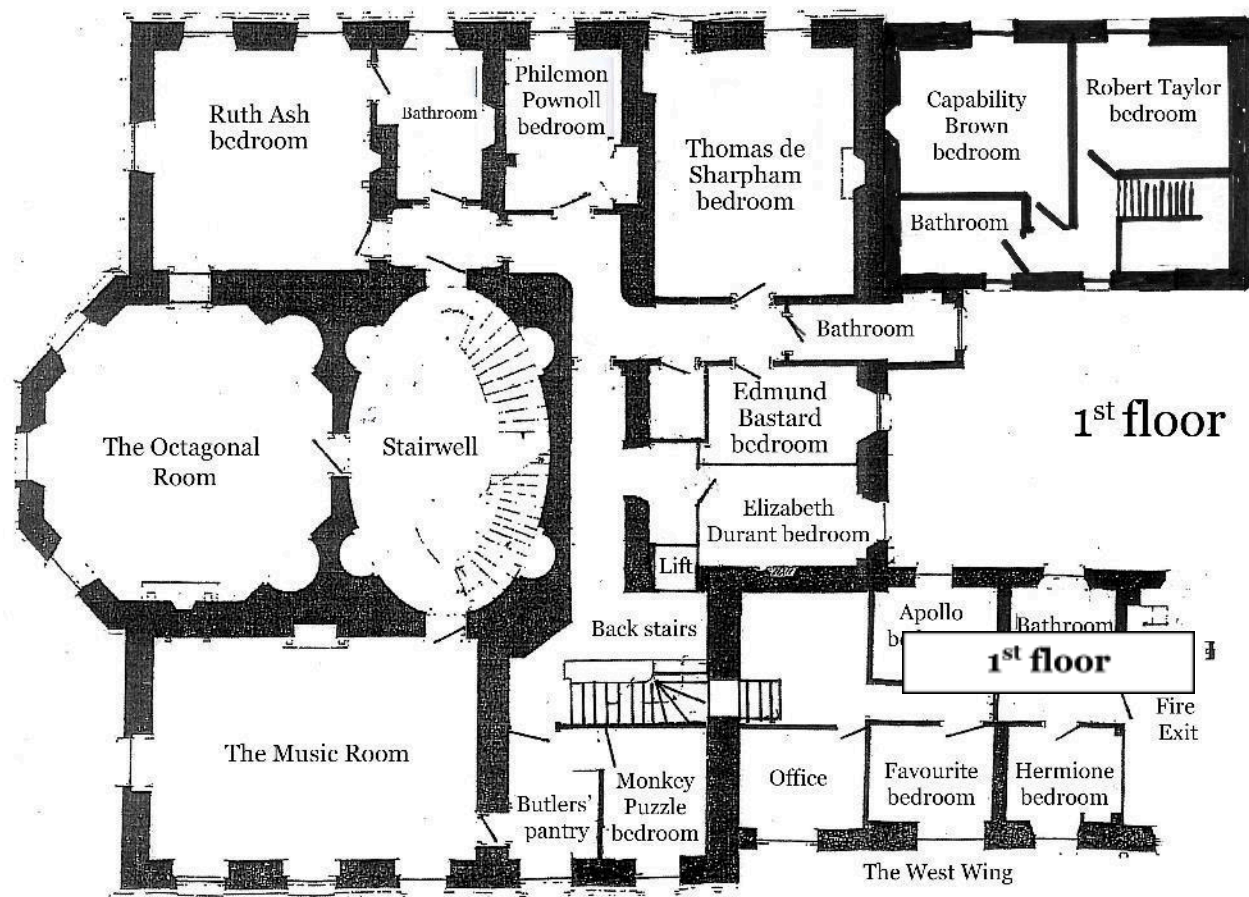
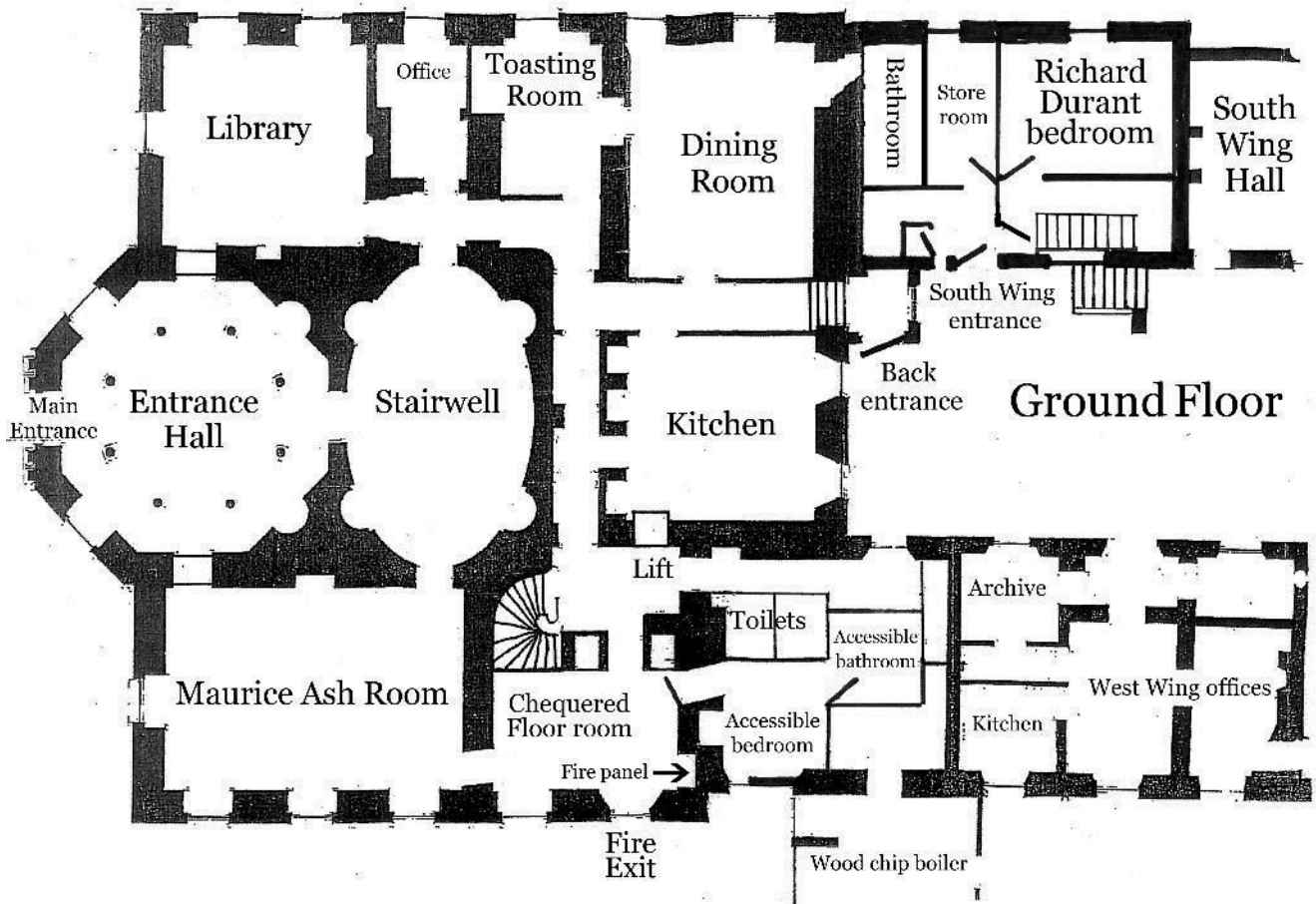
There are 24 bedrooms in the House which vary in size and number of beds.

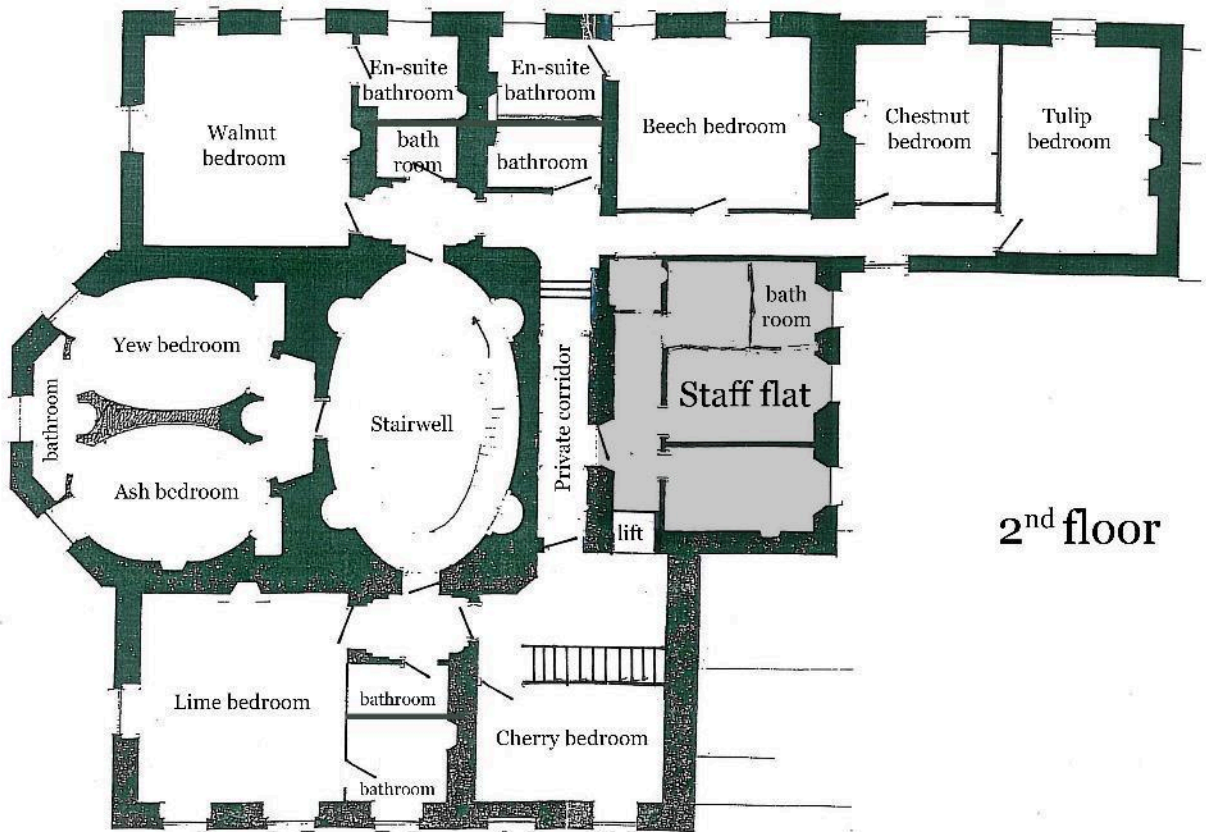
The following rooms are closer to the lift and on the same level as the lift access:

- Clare Milne
- Cherry
- Holly
- Lime
- Elizabeth Durant
- Monkey Puzzle

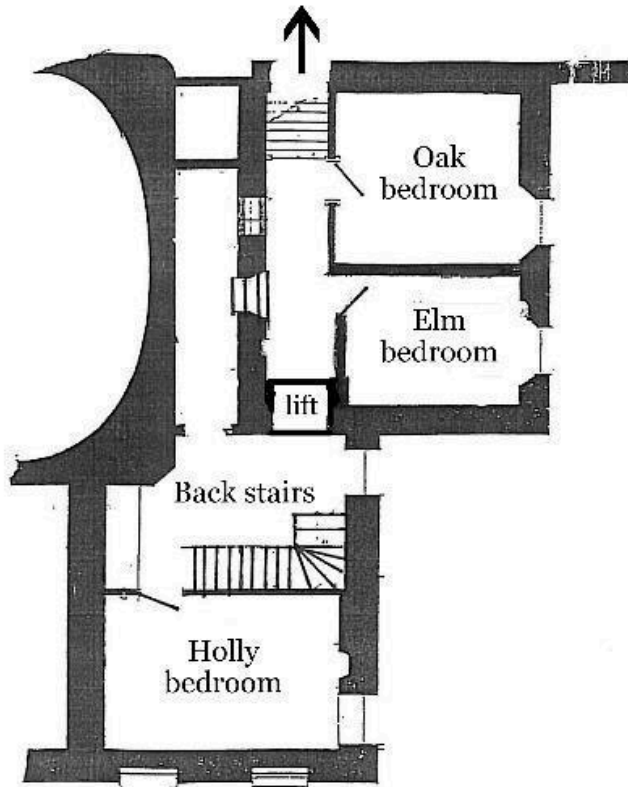
Green = accessible from the lift without negotiating steps

Ground floor	Clare Milne – accessible bedroom and bathroom			
South side 1st floor	Ruth Ash – triple	Philemon Pownoll – double bed (hand-basin)	Thomas De Sharpham – double bed (hand-basin)	
South side 2nd floor	Walnut – triple (en-suite)	Beech – triple (en-suite)	Chestnut - twin	Tulip - triple
West side 1st floor	Edmund Bastard – single	Elizabeth Durant - single		
West side 2nd floor	Oak – twin	Elm – twin	Holly - twin	
North side 1st floor	Monkey Puzzle - single			
North side 2nd floor	Lime – quadruple (en suite)	Cherry – twin		
Front of House 2nd floor	Yew – double (en-suite Jack & Jill)	Ash – twin (en-suite Jack & Jill)		
South Wing annexe	Capability Brown – twin	Robert Taylor – twin	Richard Durant – double	
West Wing annexe	Apollo – single	Favourite – single	Hermione - single	





To Walnut & Beech bedrooms



2nd floor
REAR

(Holly bedroom is below Cherry & above Butlers' Pantry / Monkey Puzzle)

12. Music Room

The Music Room measures 28' x 18' and is on the first floor, with a large rug on wooden floorboards. It is accessible from the lift on the same level.



13. Octagonal Room

The Octagonal Room measures 25' x 25' and is on the first floor, with a large rug on wooden floorboards. It is accessible from the lift on the same level.



14. Maurice Ash Room

The Maurice Ash Room measures 28' x 18' and is on the ground floor. It is carpeted.



15. The South Wing Hall

- The South Wing Hall is accessible from the car park over uneven cobbles.
- Vehicles may drive up to the South Wing Hall by prior arrangement with the House Manager on housemanager@sharphamtrust.org
- There are no steps.
- There is an accessible toilet.
- The floor is stone flagstones with carpet on top.
- There is no direct access from the South Wing into the main House, apart from via steps.



16. Gardens

- The House is surrounded by lawns which slope away to a Ha-Ha wall (with a sharp vertical face) in front.
- There is a walled kitchen garden behind the Coach House which is accessible via a ramp but the paths in the garden are grass.
- Beside the walled garden there are 2 lawn terraces approached via steps
- The woodland garden has various grass paths. Some of the terrain is steep with uneven ground.



View down the South Lawn



View up the terraced garden

MAP OF THE GARDENS AND GROUNDS

