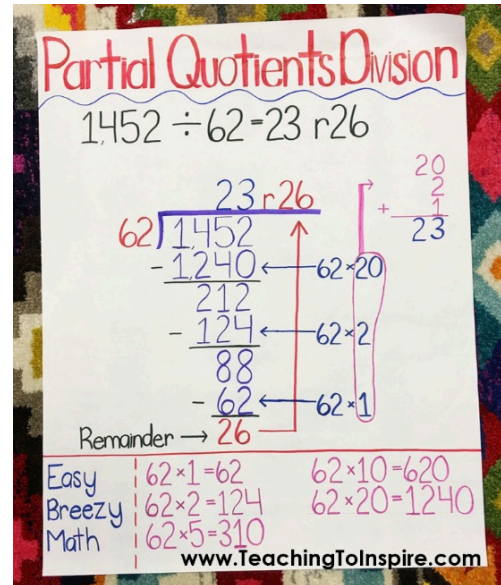


# Math Anchor Charts

## Materials:

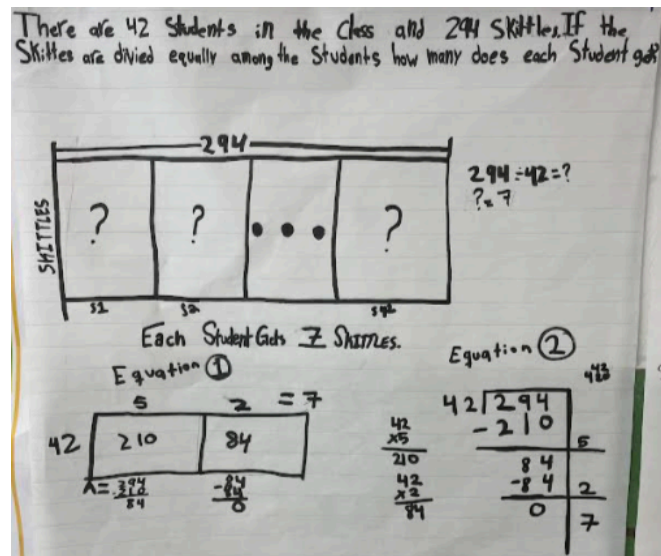
- White paper
- Chart Paper
- Pencil
- Colored pencils, markers and or crayons



## Instructions:

Your job is to create a Math Model Poster.

1. First, select a Math Model that you want to recreate (Number Bonds, Area Models and Expanded Form, Arrays, Partial Products/Quotients, Bar Models, Base Ten Disks, etc.)
2. Create a prototype (draft) using a pencil and white paper. Make sure to solve a designated math problem using different models.
3. Next, transfer your prototype (draft) to chart paper.
4. Make sure to use different colors, and to label and title your poster.



# Math Anchor Charts

## Examples:

### Multi-Digit Addition and Subtraction Base Ten Disks

**933 + 66**

What is **900 plus 0**? \_\_\_\_\_

What is **30 plus 60**? \_\_\_\_\_

What is **3 plus 6**? \_\_\_\_\_

What is the total? \_\_\_\_\_

**998 - 331**

What is **900 minus 300**? \_\_\_\_\_

What is **90 minus 30**? \_\_\_\_\_

What is **8 minus 1**? \_\_\_\_\_

What is **998 minus 331**? \_\_\_\_\_

### Area Model, Number Bonds, Array Multiplication

37


10 300 70

6 180 42

16

300

+ 70

+ 180

+ 42

592

16 × 37


10 6 30 7

10 × 30 = 300

10 × 7 = 70

6 × 30 = 180

6 × 7 = 42

592

13


10 3

4 4 × 10 4 × 3

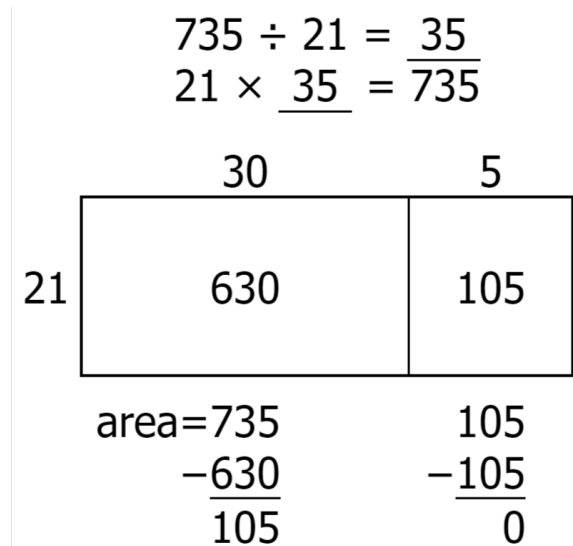
40 12

52

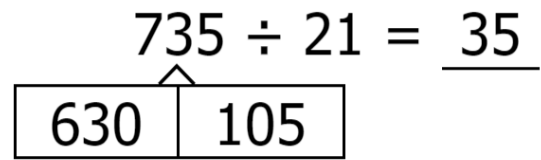
# Math Anchor Charts

## Examples:

### Area Model Division



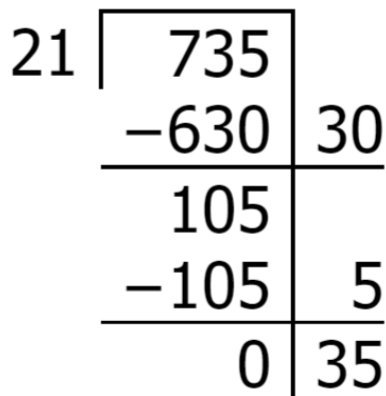
### Number Bond Division



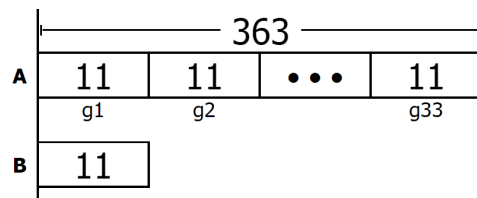
$$630 \div 21 = 30$$

$$105 \div 21 = \underline{5}$$

### Partial Quotient Division



### Bar Model



Multiplication Equation:

$$\underline{\hspace{2cm}} \times 11 = 363$$

Division Equation:

$$\underline{\hspace{2cm}} \div 11 = ?$$

363 is how many times 11?

$$\underline{\hspace{2cm}} 33$$