

KINDERGARTEN NEWSLETTER



CURRICULUM

MATH- EUREKA

- As students continue Module 4, they will practice their counting abilities, knowledge of the value of numbers, and work with number bonds and embedded numbers to reason and solve addition and subtraction expressions and equations.

SOCIAL STUDIES

- Students will identify that resources are used to make products. They will recognize workers as human resources and describe some jobs and what is required to perform them.
- Students will be able to recognize that natural resources, such as water, trees, and plants are used to make products.

SCIENCE

- Students will plan and conduct an investigation to compare the effects of different strengths or different directions of pushes and pulls on the motion of an object.
- Students will analyze data to determine if a design solution works as intended to change the speed or direction of an object with a push or pull.

ARTIST IN RESIDENCE

- Thanks to our generous PTA, students will begin their Artist in Residence with artist Quynn Johnson. Quynn will connect tap dancing and storytelling with each class. They will end this residency with a performance on March 14th at 2:00pm.

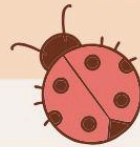


CURRICULUM

ELA- CORE KNOWLEDGE

LANGUAGE ARTS (CKLA)

- Students will begin their Research Unit: Art and the World Around Us. Students will discover artists from different time periods, countries, and cultures and learn about art and how artists use the world around them to make art.
- Students will continue their Skills lessons, with a focus on digraphs and reading comprehension.



REMINDERS

- Send in snack daily (nut-free)
- Bring in extra clothes
- Email Nicole Bell with any absences
- Complete homework sent home to strengthen learning



UPCOMING DATES

- March 6th: Poetry Night at 6PM
- March 10th-14th: Artist in Residence
- March 14th: AIR Performance at 2PM (families invited to attend)
- March 31st: No school, End of MP3