



The 51st Annual Columbus Marching Festival

Please note the NEW parade information!

Parade Event down 14th Street from 15th Avenue to 27th Avenue.
Field Event at Memorial Stadium at Pawnee Park

Admission

The parade downtown is completely free and open to the public. Admission to the Field Show is \$10.00 for Adults and \$7 for Students. Admission may be purchased on site at the ticket windows on the west side of the stadium. Children ages 4 and under will be admitted free of charge. *Please note that we cannot accept credit cards for admission to the field show. Credit cards are accepted when purchasing from the concession stand. There is no ATM on site.*

Concessions

A full concession stand will be available at the stadium during the field show. **If you intend for your students to purchase their lunch from the concession stand please send an email to lucec@discoverers.org and we can work out a plan for you.**

Passes

All students participating in the field competition will be provided a wristband for entry to the stadium and 10 wristbands will be provided for any adults you wish to have admitted for free. Should you require more than 10 adult wristbands, please ask.

If your band is parade only and you are coming to the field competition for the awards ceremony then we will have a stamp for your students hands.

Parade Information (NEW)

[Click here for Parade Bus Arrival/Staging/Step Off Schedule](#)

[Click here for the parade route](#)

Overview

- The parade route is completely different this year than in years' past
- The drop-off location is at the start of the parade, and the pickup location is at the end. **IMPORTANT:** If you or one of your assistants is driving a bus or equipment truck, you will need to make other arrangements for drivers.
- The pickup/drop off routines are significantly different as well.
- The route goes down 14th Street in Columbus and ends by Duster's in downtown Columbus.
- The judges are on the RIGHT side of the performers across from Frankfort Square (between 26th & 27th Ave)
- Some great places for parents to watch are at Frankfort Square or the Columbus Community Library. Parents can sit to view the parade along 14th street from 23rd Ave to 28th Ave

Bus Information

- Drop-off area is the west parking lot of NPPD building (1414 15th Street.) **Enter via 16th street (west side) ONLY.** (See map)
- A CMF representative will be there to assist parking, please look for them and follow the directions they give.
- Directions to drop off area:
 - *If entering Columbus from the south:*
 - Please have your buses turn right (east) on 8th Street and proceed to 12th Avenue. Turn left (north) on 12th Avenue and proceed to 17th Street. The buses should then turn left (west) onto 17th street proceeding to 16th avenue. Turn left on 16th avenue (south) and then turn into the parking where you will be directed to a drop off spot.
 - *If entering Columbus from the north:*
 - Please have your buses turn south on 33rd Avenue and then turn to the east on 17th street. Proceed down 17th street to 16th avenue and then turn south onto 16th, then turn into the parking lot where you will be directed to a drop off spot.
 - *If entering Columbus from the east:*
 - Please have your buses travel along 23rd Street to 14th Avenue (This is a stoplight by Vishay and BD). Turn to the south along 14th Avenue and proceed to 17th Street. Turn right (west) onto 17th Street to get to 16th avenue. Turn left on 16th avenue (south) and then turn into the parking where you will be directed to a drop off spot.

- Busses will be parked temporarily, only long enough to facilitate drop off of kids and equipment.
 - **Please ensure that all equipment needed for the parade is taken off of the buses before moving them to the waiting area.**
 - **Additionally, please communicate with your students that extra equipment not needed for the parade performance (i.e. cases, coats, etc.) must be put back on the bus before it departs to the waiting area.**
- After the process of drop off has completed and the bus is ready to leave, the buses will leave the parking lot on the **north** side, entering 17th street, turning right to go back over the 12th avenue viaduct to 8th street. Take 8th street to 26th avenue. Take 26th avenue to cross the tracks, turning right into the parking area on the north side of the tracks. A CMF representative will be there to assist parking, please look for them and follow the directions they give.

IMPORTANT: Please ensure that the drivers **only** take this route to the waiting area, as streets are blocked off for the parade and traffic will be unpredictable. Also, to avoid getting stuck downtown or in a residential area where turning a bus around isn't practical or even possible in some areas.

- As your band finishes their performance, a CMF representative will radio to the bus area that your band is ready to be picked up.
- Your bus will then enter 12th Street to 29th Avenue and pickup in the Duster's west parking lot. A CMF representative will be there to assist, please look for them and follow the directions they give. Equipment vans/trucks may be directed to stay on 29th Ave and park on the street/curb to load.
- We plan to have at least 3 lanes of bus parking in that lot as multiple bands will be finishing at nearly the same time.
- Once your equipment and bus are reloaded, please take 14th street west to 33rd avenue, and then to the stadium or other destinations of your choosing.

Parade Staging

Upon arrival in the drop off area bands should get into uniform and get all instruments out. There will be port-a-potties available at the drop off area. You will be directed to an area of the parking lot where you can warm-up, and then directed into the staging area when your turn comes up.

Parade Judging

Adjudicating the parade will be Mr. Kevin Koopmann, Mr. Robert Conrad, and Mr. Jason Rygg. You will be judged in the areas of Music, Marching and General Effect. Following the parade you will be provided with the judges audio comments and a video of your band's performance.

As you approach it, you will notice a person or sign that alerts you that you are entering the judging area.

Be Reminded - Bands may be HALTED one block before "JUDGING AREA" sign. The Official will then instruct the Drum Majors to proceed through the judging area. The Drum Major or director must immediately adhere to the instructions of the Starter.

NOTES about the parade judging area:

- It is HIGHLY recommended that your band plays the **entire** time you are in the judging area. Cadences are cool, but not adjudicated.
- It is possible that we may ask your band to wait as they enter that area so as not to encroach on another band's performance and adjudication. You can continue to play and mark time as you wish, but please be aware that this may happen. We encourage you to work with your banner carriers, parents, and other members who may be at the front of your group to pace themselves from the band in front.

Parade Awards/Commentary

Awards for the parade will be presented at or around 1:00 pm at the stadium. Trophies will be presented to 1st, 2nd and 3rd place in each class. Commentary from the judges will be shared via a Competition Suite. Please see the attached instructions on how to use Competition Suite. In the event of a tie the first tiebreaker is the music score, the second tiebreaker is the marching score.

Field Information

[Click here for the field Schedule](#)

Bus/Equipment Parking Information (Field)

Bus parking will be in the lot adjacent to the baseball field to the east of the football stadium. There will be parents to help direct traffic upon your arrival to the area. Pit equipment vehicles will park in the Pawnee Plunge parking lot south of the baseball field. *Please advise anyone driving a personal vehicle that they must park on the West Side of the Stadium.*

Field Show & Warm-up Sequence

Bus Arrival

The parking lot attendants will guide you when you arrive. You will be assigned parking spaces. Please ask your students to wait at the bus until they can be marked for entry into the stadium.

Assembly Area

Your guide will meet you at the Assembly area at the designated time. This area is located to the West of the Stadium and South of the Tennis Courts. This is a No-Play Zone.

Warm-up Area

You will have a 30 minute warm-up block. There are no lines in this area. You will likely be sharing this space with the band before and after you.

Percussion lines wishing to warm-up early Should move well to the west of the stadium near the golf course. Please face away from the stadium while warming up.

On Deck Area

Your guide will lead you to the On Deck Area at the designated line. You should be in no more than a double file line to easily travel the paths to the south east corner of the field. (side #2 back hash entrance & side #2 front hash exit)

Timing

Each band will have 15 minutes to complete field entry, warm-up, performance and exit. Timing is kept for your information only as no penalties will be assessed at this contest. A starter will signal your group when to cross the entry line and the clock has started. Judging begins immediately following the introduction of the band and will cease at the conclusion of the band's performance. The timing for each band will conclude when all of the members, equipment and props have crossed the exit line. Judges are advised not to judge the band's exit.

Field of Performance

The surface is artificial turf. It has high school hash marks and standard soccer field markings on the surface. The Field of Performance, designated as the entry point to begin the 15-minute performance slot, shall be the goal line and the plane of the goal line extended to the stands. Band members and drum majors may perform outside the boundary line but may NOT enter the spectator seating for any reason. The pit percussion area can be any place within the competition area and will not contain any specific markings.

Video Recording of Bands

The video file of your bands performance will be shared via a google drive link. We will once again use the onsite HUDL camera to video your performance, however this we year we have worked out how to center on the middle of the field so this should be a better quality than last year. You are welcome to record your own bands performance if you prefer.

Introduction

The 15-minute timing begins when any portion of the band or their crew and members crosses the entry line. It is possible that the announcements from the previous band will be concluding while the next band is

entering the field. The official introduction for the next band should be read by the announcer on a cue given by the field manager after a cue from the drum major or band director.

“Joining us from Band City, Nebraska please welcome the Hometown High School Band !”

(pause for audience response and wait for a cue from the field manager before proceeding)

“Their 2024 program is entitled___ and includes the following musical selections...” (announcer reads their selections)

If the drum majors are going to salute,

it should occur no later than when the announcer says: “The Columbus Marching Festival is proud to present in competition Drum Majors ____, ____ and the ____High School (nickname) Marching Band”.

A drum major salute is not required to indicate the band is ready to start. Adjudication will begin immediately following the announcement listed above.

Field Exit

At the conclusion of the show the band proper should move towards the exit boundary line, which will be the north goal line and the plane of the goal line extended to the stands. All portions of the ensemble and their equipment must cross the line prior to the end of their 15-minute time slot. The pits and large props will exit towards the north. All playing sounds (including percussion) must stop once the Field of Performance is vacated and the goal line is crossed. Bands with large props need to remove them completely from the field and spectator’s view before disassembling them to stay within their 15-minute time slot.

Concessions

Concessions will be made available for sale in the stadium. ([click here](#) for more information) Thank you for communicating this with your students and parents. Credit/Debit cards are accepted when purchasing concessions.

Field Adjudication

Adjudicating the field contest are:

- Music Effect - Doug Phillips, Columbus
- Visual Effect - Robert Conrad, Sioux Falls, SD
- Music Ensemble - Terry Rush, Lincoln
- Music Individual - Jason Rygg, Sioux Falls, SD
- Visual Ensemble - Landon Barada, Bennington
- Visual Individual - Wade Howles, Lincoln
- Auxiliary - Andrea Kellett, Fremont
- Percussion - Ben Samson, Omaha

Awards

Presentation of Parade Awards will be at the stadium at 1:00p.m. Uniformed Drum Majors/Guard Captains or student representatives should assemble in the North end of the track Prior to 1:00p.m. Any uniformed students will be allowed into the awards ceremony free of charge.

Presentation of Ratings for Field Events along with awards for Outstanding Percussion, Outstanding Color Guard, will be at the Stadium at 6:00p.m. Uniformed Drum Majors/Guard Captains or student representatives should assemble at the South end of the track during the Columbus High performance.

Questions

If you have any questions please contact Jeff Peabody at peabodyj@discoverers.org (308)216-1490.

Competition Suite

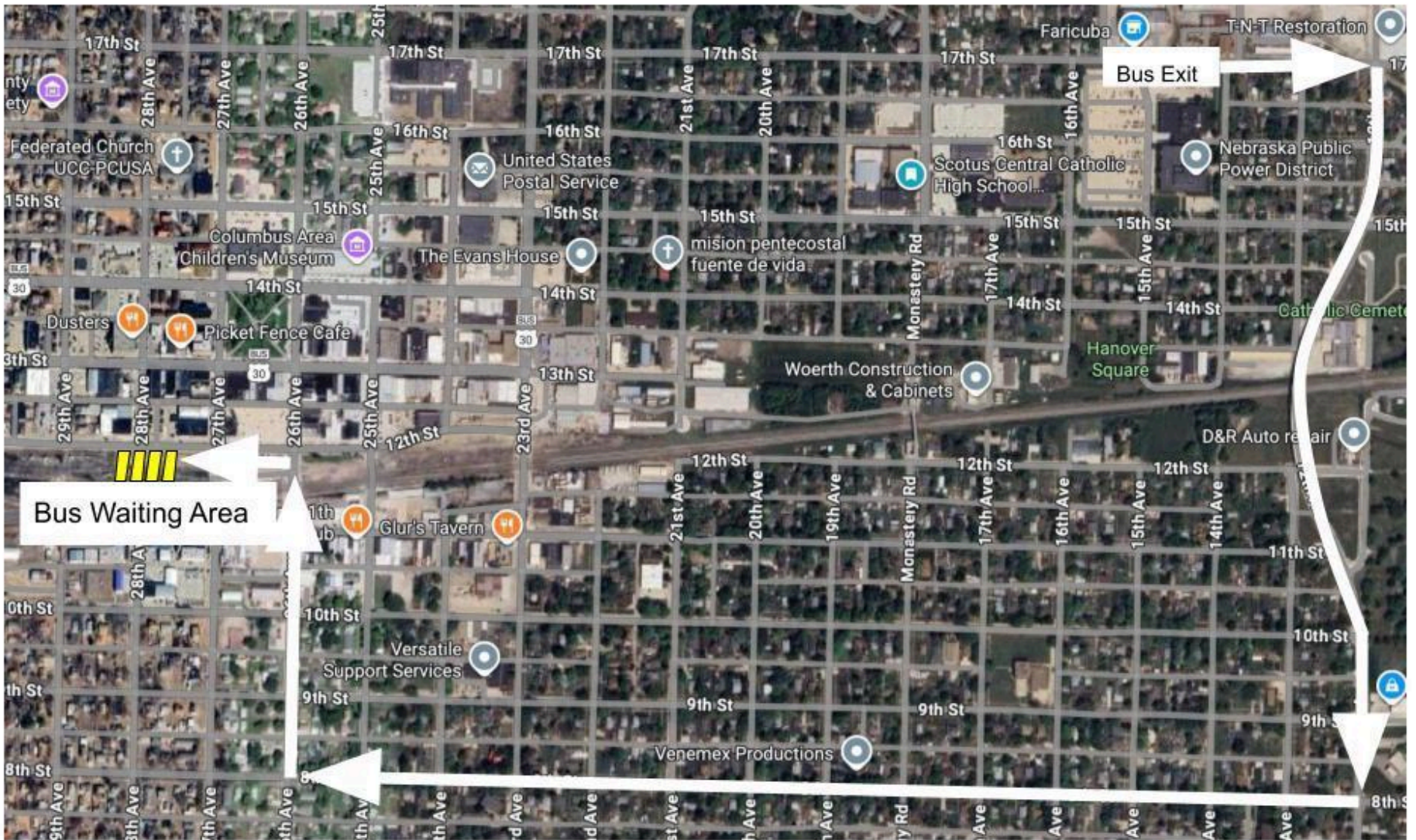
We are using the Competition Suite this year to deliver your judges comments. You will be able to listen to your judges commentary as soon as we have them uploaded. Judges will have individual sheets to make additional comments if they wish. You will need to make an account for Competition Suite using the email address you submitted with your registration. Please let us know if you have any questions.

Bus Maps for Columbus Marching Festival

NPPD Entrance and Exit for Parade Drop-off:



Route to Bus Waiting Area



Bus Exit

Bus Waiting Area

Bus Route for band pickup after parade:

