

ACAP and ACT Resources



To receive notifications when this page is updated, complete [this form](#). To contact an OSI Team Member in your area, see [this NEW map](#).

ACAP Summative

- **Important Websites**
 - [ALSDE ACAP Website](#)
 - [DRC Website](#) (Blueprints, Performance Descriptors, Item Specs, Grade Specific Instructional Docs, etc.) - **No login required**
 - [DRC Insight Portal](#) - Login required
- **Testing Calendar [2022-2023](#)**
- **ACAP Data**
 - [2022 ACAP Summative PARCA Report](#) for Schools & Districts (2021-2022 Comparisons)
 - [ACAP Summative Proficiency Data](#) (scroll to Proficiency - Download Spreadsheets)
- **Considerations for Using ACAP Summative Resources**
 - Pacing & Planning → Blueprints
 - Instruction → Instructional Supports, Retired Questions, & PLDs
 - Assessments → Item Specs, Retired Questions, & PLDs
- **Performance Level Descriptors (PLDs)**

You can access PLDs in the [DRC Website](#) (under ACAP Summative) and the [ALSDE ACAP Website](#). PLDs are especially helpful for student goal setting, common assessments, rubrics, standards-based grading/assessments, and essential questions/I Can statements. Sample student scores and rationales are provided as well.

 - [PLD Presentation](#) (2022) with Math and ELA Activities
 - 2023 PLDs (posted 10/7/22 & 1/6/23)
 - [By Grade Level](#)
 - [By Content Area](#)
 - [PLD Educator Recorded Training](#) (2023) (10 min.)
- **Test Blueprints**
 - Test Blueprints - ACAP Summative 2023
 - [By Grade Level](#)
 - [By Content Area](#)

- **Instructional Supports**

Foundational tools that educators may use to help students become independent learners as they build toward mastery of the Alabama Course of Study content standards. Instructional supports are designed to help educators engage their students in exploring, explaining, and expanding their understanding of the content standards.

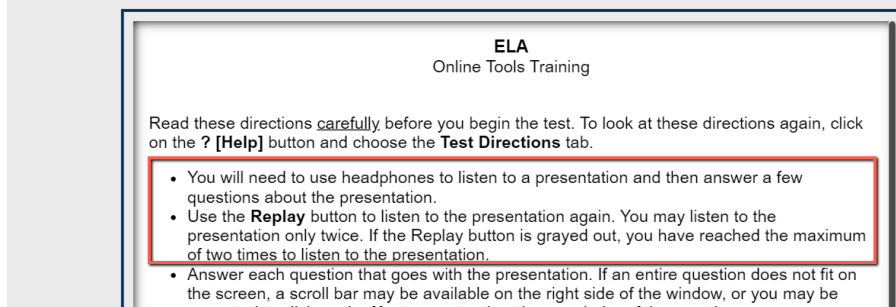
- [Spring 2023 Instructional Supports by Grade Level](#) (posted 11/2/22)
- [Spring 2023 Instructional Supports by Content](#) (posted 11/2/22)

- **Math and Science Related ACAP Summative Resources**

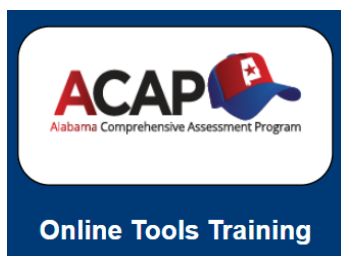
- [AMSTI ACAP Summative Math Wakelet](#)
- [Geometry, Measurement, and Data Strand on ACAP Summative](#)
- [AMSTI Math Assessment Item Bank](#)
- [AMSTI Science Formative Item Sets](#) (expose students to ACAP-like test items) These items can be used to help measure progress towards mastery of standards.
- [Additional MATH ACAP Summative Resources](#) (curated by JSU AMSTI)
- [ACAP Summative Math](#) (Mega 2021 Presentation)
- [ACAP Summative Science](#) (Mega 2021 Presentation)
- 2023 Recorded Trainings
 - [How to Write Items Aligned to the Course of Study: Math](#) (47 min.)
 - [How to Write Items Aligned to the Course of Study: Science](#) (27 min.)

- **English Language Arts (includes Reading, Writing, & Listening) Resources**

- [ARI ACAP Summative](#) Padlet
- [ACAP Summative Instructional Supports Aligned to the New AL ELA COS](#) (Grades 2 & 3)
- Recorded ELA ACAP Summative Trainings (app. 1 hr. each)
 - [ACAP Summative Cognitive Complexity of the Text-Dependent Writing Prompts](#)
 - [English Language Arts Text-Dependent Writing \(TDW\) for Grades 2 and 3](#)
- Listening (Grades 2-8)
 - Training - [ACAP Summative: Assessing the Listening Standards for Grades 2 through 8](#)
 - Grades 2-3 measures phonological/phonemic awareness and fluency. Grades 2-5 measures phonics. Grades 4-8 measures text-dependent writing (grades 2-3 next year). See [memo](#) for more.
 - Teachers and students can see what Listening looks like in the [OTT](#) ELA Tests - see screenshot below.



- **Text-Dependent Writing** (Grades 4-8 in 2022. Grades 2-3 will begin in 2023, but will be considered field-test items.)
 - Modes will be Argumentative, Informational, or Narrative.
 - [Training: ACAP Summative Text-Dependent Writing \(TDW\) Item Rubric](#) (Grades 4–5)
 - [ACAP Summative Text-Dependent Writing \(TDW\) Item Rubric](#) (Grades 6–8)
 - [TDW Resources by Grade Level](#) (includes new rubrics)
 - [TDW Resources by Mode](#) (includes new rubrics)
 - [Sample Student Rubric](#) using ACAP Rubric Language
- **More ACAP Docs and Resources**
 - ACAP Summative Teacher Checklist [Doc](#) and [Presentation](#) (OSI, William Jones)
 - ACAP Summative Principal Checklist [Doc](#)
 - [2023 Documents Posted in DRC Portal \(including Retired Questions in the Item Specs\)](#)
 - NEW**
 - [ACAP Grade-Level One Pagers](#) Resources Grouped by Each Grade
 - [ACAP Summative Sandbox](#) (K-8, Math, Science, ELA) *Great for bellringer/modeling activities.*



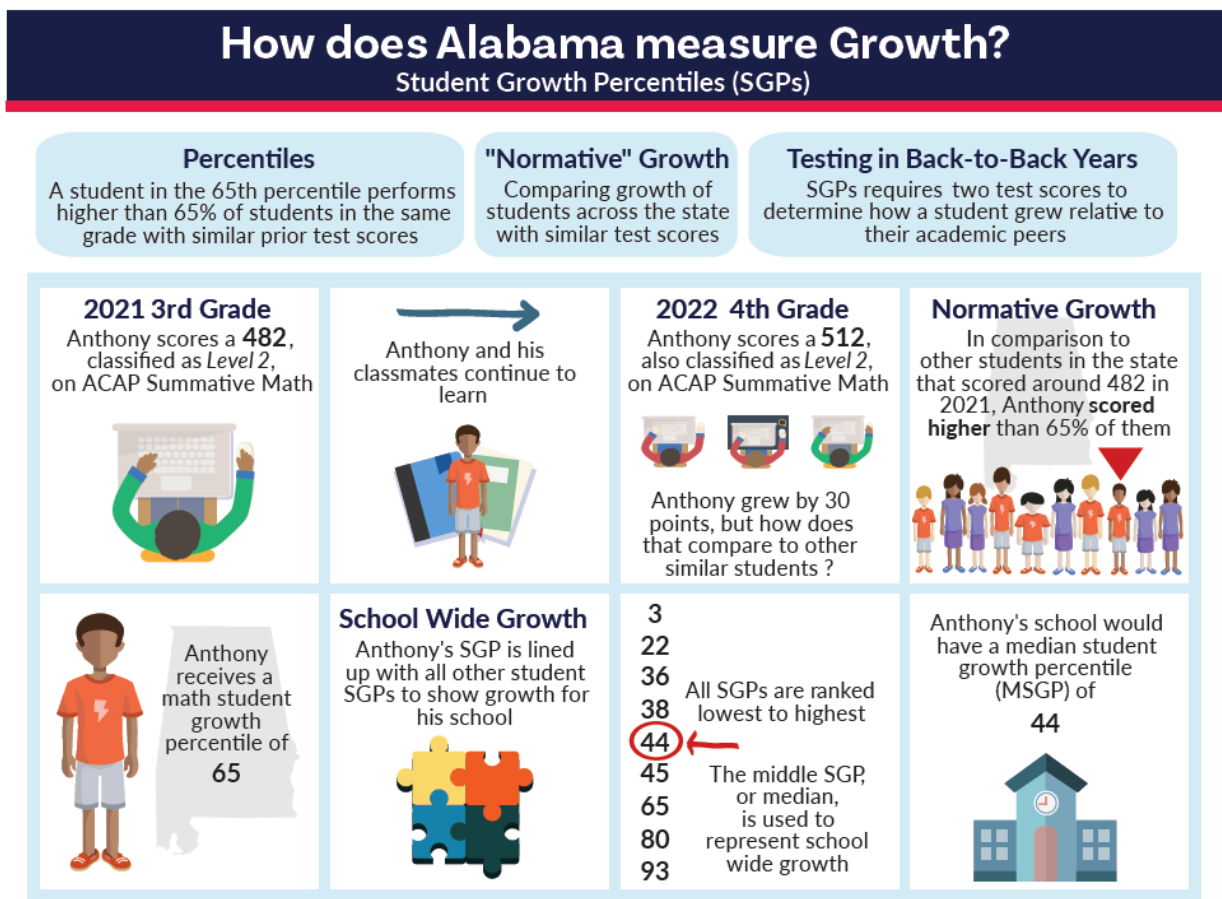
Click on Online Tools Training (OTT)

- **Retired 2021 Questions**

The sample/retired ACAP Summative items are located within the Item Specifications for each content and grade. These are also included within the Scantron Achievement Series.

 - [ACAP Summative Sample Test Items sorted by Grade Level](#)
 - [ACAP Summative Sample Test Items sorted by Content Area](#)
- **Related Professional Learning**
 - ACAP Summative & Alternate [Recorded Presentations](#) (2023)
 - All recorded presentations are linked in each of the documents for easy access.

- [ACAP Interactive Reports Presentation](#)(December 2022)
 - Includes the following:
 - *ACAP Summative* Cognitive Complexity Training Packet
 - *ACAP Summative* Performance Level Descriptors (PLDs) Educator Training
 - *ACAP Alternate* Cognitive Complexity Training Packet
 - How to Use Sentence Strips and Picture Cards in Daily Instruction
- [ALSDE/ACAP Resources that Support the Instructional Cycle](#)
- [TWIRL to ACAP Readiness](#)
- [ACAP Summative Teacher Checklist](#)
- [Beyond ACAP Summative: Using Proficiency Scales to Guide Instruction and Assessment](#)
- [ACAP Mega 2022 Presentations](#)
- **Other Testing Practice and Simulations**
 - [PA Testing Resource Site](#). Demonstrates technology-enhanced questions in all content areas and grades. Click on middle column content areas. Videos are super helpful!
 - [Free EdCite Tools](#) (must create account). Browse state assessment questions by content, grade, etc.



For more, visit www.alabamaachieves.org/assessment

ACT

- [ALSDE ACT Website](#)
- [Alabama ACT Performance Level Descriptors](#) (ELA, Math, & Science)
 - ACT Performance Level Descriptors - Math [On Demand Webinar](#) (25 Minutes)
 - ACT Performance Level Descriptors - Science [On Demand Webinar](#) (23 Minutes)
- [ACT Assessment Standards by Content Area and Alignment with State Standards](#) - Worksheets (ACT)
- [Anchoring the Curriculum Using ACT Standards](#) (ACT)
- [Practices of Top Gaining Schools on the ACT](#) (PARCA)
- [The ACT Knowledge and Skills Map](#) can be used to learn more about ACT's approach to measuring college and career readiness. Each subject area provides a grade-by-grade overview of knowledge and skills that research suggests a student should master on the path to college and career readiness. (ACT)
- ACT Writing
 - [ACT Writing Scores and Sample Prompts and Scored Essays](#) (ACT)
 - [ACT Writing Test Scoring Rubric](#)
 - [The ACT Writing Webinar](#)
- [Understanding ACT ELA Scores](#)
- [ACT Practice Site](#) (March to Success)
- [ACT Prep for Alabama](#)
 - Includes how to register students and create courses (video tutorials and manuals)
- [2019 Math ACOS Secondary Course Alignment to ACT](#)
 - This document was developed during the math course of study revision process to assist secondary teachers with the alignment of the newly adopted 2019 mathematics course of study standards to the math section of the ACT with Writing assessment.
- [ACT Crosswalk Correlation to the 2019 Math COS - PDF - Final](#)
- Technical Manuals (ACT)
 - [Breakdown of PreACT](#) and [Technical Manual](#)
 - [Breakdown of ACT](#)
- Accountability and PreAct-ACT Growth Information
 - [Understanding Alabama's Academic Growth Calculations Using PreACT and ACT](#)

- ACT Related OSI PL Slides:
 - [TWRL to ACT Readiness](#)
 - [The Nexus Between ACAP and ACT](#) (presented at Mega)
 - [Impactful Literacy Practices – Preparing our Students for the ACT and Beyond](#)
 - **ACT Professional Development Training Recordings**
Recommend sharing at grade-level, content, or common planning meetings.
 - [On Demand Webinar - The ACT English Test](#)
 - [On Demand Webinar - The ACT Math Test](#)
 - [On Demand Webinar - The ACT Reading Test](#)
 - [On Demand Webinar - The ACT Science Test](#)

Alabama ACT Accountability Benchmarks 2020-2021

Subject	Level 1	Level 2	Level 3	Level 4
ELA	1-13	14-18	19-22	23-36
Math	1-15	16-18	19-24	25-36
Science	1-15	16-19	20-25	26-36

ACT College and Career Readiness Benchmarks

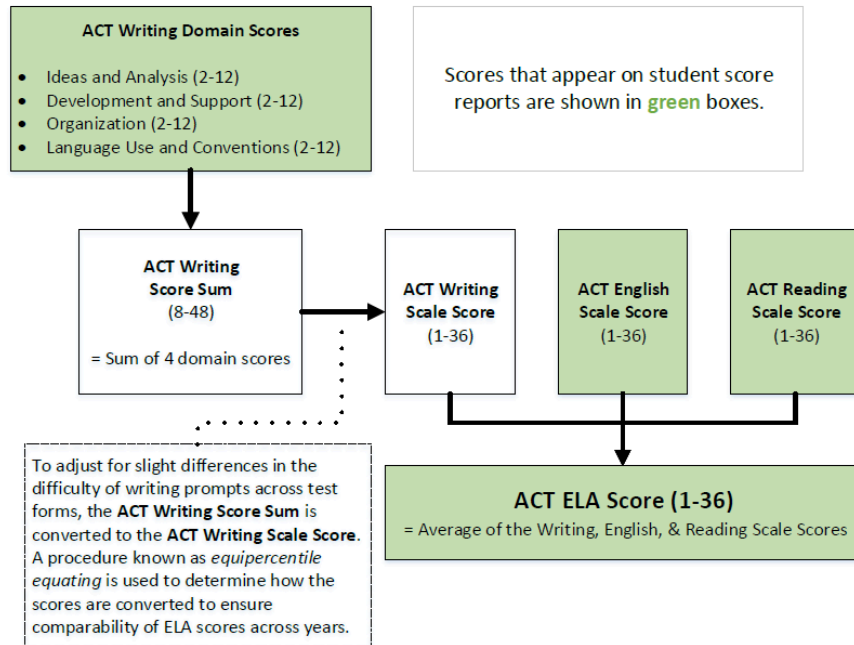
Subject	Benchmark
ELA	20
Math	22
Science	23
Reading	22
English	18

NEW

Understanding ACT ELA Scores

Did you know?

- To get an **ACT® English Language Arts (ELA) score**, students must take the ACT writing test – in addition to the English and reading tests.
- The ACT ELA score is calculated by taking the average of the English, reading, and writing scale scores. See the diagram for more details on how the score is derived.
- The **ACT College Readiness Benchmark** for ELA is 20. Students who meet the Benchmark are likely to do well in first-year English and social science courses.
- ACT ELA scores tend to be lower than ACT English and reading scores. Among students who had an ELA score and completed high school in 2020, the average scores were higher in English (19.7) and reading (21.2) than in ELA (19.1).



©2020 by ACT, Inc. All rights reserved.

NAEP **NEW**

- [Math COS Correlation to NAEP Framework](#) **NEW**

We are here to help! Contact the OSI Team member in your area for support. **NEW**

It's Our Pleasure to Serve You!

Mr. AJ Buckner
Serving Regions 1, 2, 3, & 6
anthony.buckner@alsde.edu

Mrs. Wendy Arnold
Serving Region 5
wendy.arnold@alsde.edu

Ms. Charissa Lambert
Serving All Regions
charissa.lambert@alsde.edu

Ms. Leigh Twigg
Serving Regions 1, 5, & 6
leigh.twigg@alsde.edu

Dr. Joe Garner
Serving Regions 5, 6, & 7
joseph.garner@alsde.edu

Dr. Marcy Burroughs
Serving Regions 4 & 5
marcy.burroughs@alsde.edu

Ms. Bianca Gaither
Serving Region 5
bianca.gaither@alsde.edu

Mrs. Taurus Smith
Serving Regions 8, 9, & 11
taurus.smith@alsde.edu

Mrs. Carol Sherman
Serving Region 5 & Virtual
carol.sherman@alsde.edu

Mrs. Robin Anderson Davis
Serving Regions 8 & 9
robin.davis@alsde.edu

Education Administrator
Serving TurnAround Schools
TBA@alsde.edu

Mr. William Jones
Serving Regions 10 & 11
william.jones@alsde.edu

Dr. LaWanda Mitchell
Serving Regions 8 & 11
lawanda.mitchell@alsde.edu

ELA Literacy Specialist
Serving All Regions
TBA@alsde.edu

Dr. Melissa Shields
Assistant State Superintendent
mshields@alsde.edu

