
The Title Reflects the Results, a Maximum of 14 Words, Using Title Case, Candara 18 pt

First Author Full Name¹, Second Author Full Name^{2,*}

¹First author affiliation and address: Department, Institution and Official Address, Calibri light 9 (exp: Department of Public Health, Faculty of Medicine and Health Sciences, Universitas Muhammadiyah Yogyakarta, Special Region of Yogyakarta, Indonesia)

²Second author affiliation and address of corresponding author

DATA OF ARTICLE:

Received:

Reviewed:

Revised:

Accepted: ...

*CORRESPONDENCE:

Institutional@author

DOI:

.....

TYPE OF ARTICLE:

Research

Abstract: Abstracts are written in English in unstructured form, with a concise and clear manner, thus allowing the reader to understand important aspects without having to read the entire script. The abstract contains no more than 200 words, covers the background, objectives, methods, results, and conclusions. There is no suggestion in the abstract. Use Goudy Old Style 10pt.

Keywords: consists of 3-5 words that can help the preparation of the index, separated by semicolon (;), Goudy Old Style 10

INTRODUCTION

Introduction contains justification of the importance of the study conducted. Novelty generated from this study compared the results of previous studies or existing knowledge needs to be clearly displayed. It was explicitly stated that this study was different from other studies. Complete it with the main reference used. The last paragraph must indicate the methods used and the purpose or hypothesis of the study. Reference writing uses Vancouver style with superscript number.¹

MATERIALS AND METHOD

Methods elaborate materials and tools used (if stated), contain detailed steps for conducting research and explain the method of data collection and analysis in a narrative form. In more detail, method should contain the design, the size, criteria and method of sampling, instruments used, and procedures of collecting, processing, and analysis of the data.

When using a questionnaire as an instrument, explain the contents briefly and to measure which variables. Validity and reliability of instruments should also be explained. In the experimental or intervention studies that need to be explained, interventional procedure or treatment is given.

Analysis of data using computer programs needs not be written details of the software if not original. Place or location of the study is only mentioned when it comes to study. If only as a research location, the location details are not worth mentioning, just mentioned vague, for example, "... at Biological laboratory, Universitas Muhammadiyah Yogyakarta." The methods section is written briefly in two to three paragraphs.

Research using human and animal subjects must state that the study has received approval from the health research ethics committee.

RESULT

The Result section presents the data and its interpretation. Research data can be presented in the form of tables / figures / graphs. After the subtitles 'Result' must begin with an introductory sentence before the table / picture / graph. Table descriptions do not repeat data in tables or figures.

The findings are sorted by the objectives of the study or the research hypothesis. The results do not display the same data in two forms namely tables/ images /graphics and narration. No citations in the results section. The average value (mean) must be accompanied by a standard deviation.

Images are placed symmetrically in columns within a single space of a paragraph. Images are placed immediately after its description in the manuscripts. Pictures are numbered and sorted by Arabic numerals. Captions placed below the image and within one single space of the image. Captions are written by using Goudy old style 9pt font size, bold, capital letters at the beginning of the word.

Images which have been published by other authors should obtain written permission from the author and publisher. Include an image with good quality in a full page or scanned with a good resolution in the format *jpeg* or *tiff*. When the images are in the photograph format, include the original photographs. The font used in the picture or graphic should be commonly owned by each word processor and the operating system such as Symbol, Goudy old style with size not less than 9 pt. Image files which are from applications such as Corel Draw, Adobe Illustrator and Aldus Freehand can give better results and can be reduced without changing the resolution.

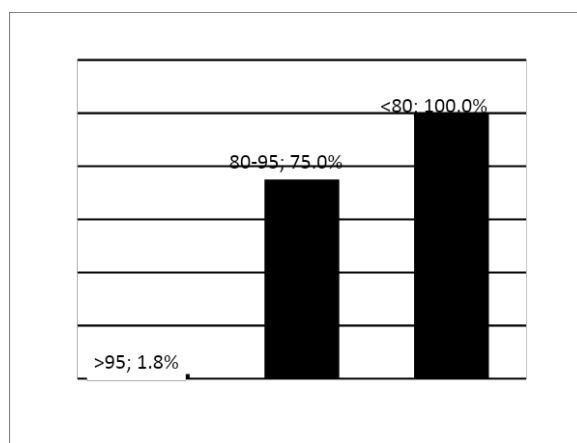


Figure 1. Here is an Example of an Image Included in the Manuscript

Table should not use a column line. Table is written with Goudy old style size 9 pt and placed within a single space below the table title. Numbering tables are using Arabic numerals. The table title are written by using Goudy old style 9pt font size, bold, capital letters at the beginning of the word, in left alignment. The distance between table and the paragraph is a single space.

The table is put immediately after its appointment in the manuscript. The table framework is using lines size 1 pt. If the table has many columns, it can use landscape orientation form. If the title in each table column is long and complex, the columns are numbered and its description given at the bottom of the table. Avoid interrupted the table by page.

Table 1. Subject Characteristics

| Characteristics | Total | Percentage |
|--|-------|------------|
| Gender | | |
| Male | 28 | 41.79% |
| Female | 39 | 58.21% |
| Age | | |
| 26-35 years old | 46 | 68.66% |
| 36-45 years old | 21 | 31.34% |
| Clinical Symptoms | | |
| Fever | 60 | 89.55% |
| Nausea | 41 | 61.19% |
| Vomiting | 34 | 50.75% |
| Headache | 34 | 50.75% |
| Abdominal pain | 18 | 26.87% |
| Malaise | 11 | 16.42% |
| Myalgia | 11 | 16.42% |
| Dysphagia | 1 | 1.49% |
| Epistaxis | 1 | 1.49% |
| The duration of hospitalization | | |
| 2 days | 10 | 14.93% |
| 3 days | 25 | 37.31% |
| 4 days | 17 | 25.37% |
| 5 days | 9 | 13.43% |
| 6 days | 1 | 1.49% |
| 7 days | 5 | 7.46% |

DISCUSSION

It is an academic review by comparing the data obtained in the previous studies by other researchers in the same field. The discussion must be related to the problem stated in the background, and directed at an answer to the research hypothesis.

No more statistical or other mathematical symbols in the discussion. Emphasis was placed on similarities, differences, or the uniqueness of the findings obtained. It is need to discuss the reason of the findings. Thus, the discussion must be supported by adequate and up to date references. The implications of the results are written to clarify the impact of the results the advancement of science are studied. The discussion ended with the various limitations of the study

CONCLUSION

Conclusions section is written in narrative form in one or two paragraphs. The conclusion is the answer of the hypothesis that leads to the main purpose of the study. There are no statistical figures and also suggestions in the conclusions.

ETHICAL CONSIDERATIONS

The study has received approval from the ethical committee...

ACKNOWLEDGEMENT

Acknowledgement is optional. Acknowledgements should be limited to the appropriate professionals who contributed to the paper, including technical help and financial or material support, as well as any general support by a department chairperson.

CONFLICT OF INTEREST

The author must reveal 'All potential conflicts of interest' here. This includes all financial and non-financial interests and relationships, employment (whether full or part time), and services in the private sector and nonprofit boards and advisory panels, whether paid or unpaid. The author must also disclose any

conflicts of interest that might have affected the behavior or presentation of the study, including but not limited to close relations with those who might be injured due to publicity, academic interests and competition, and personal, religious or political beliefs relevant to the topic discussed.

REFERENCES

References should most preferably be published in the last 10 years and is highly recommended from primary sources of articles in scientific journals at least 80% of all references. It recommends using the reference tool to compile the citation and bibliography using either Mendeley, Zotero, Endnotes, or other applications that you prefer. Unpublished research reports (graduation paper, thesis, or dissertation) are minimized as much as possible. The number of references for research articles and case reports is at least 20 references. The author-year notation system is required and completed. All references mentioned should be written down in reference using Vancouver style and arranged from smallest to largest number in the order they appear in the text. It written with Goudy old style 10 pt font size.