

Pika release notes 2016.05.0 release

Released on 6/9/2016

New Functionality

- Always display edition information for each manifestation so edition, publisher, publication date, etc. can be seen when these factors vary or when more than .



9) **Chemistry: the key to our sustainable future**

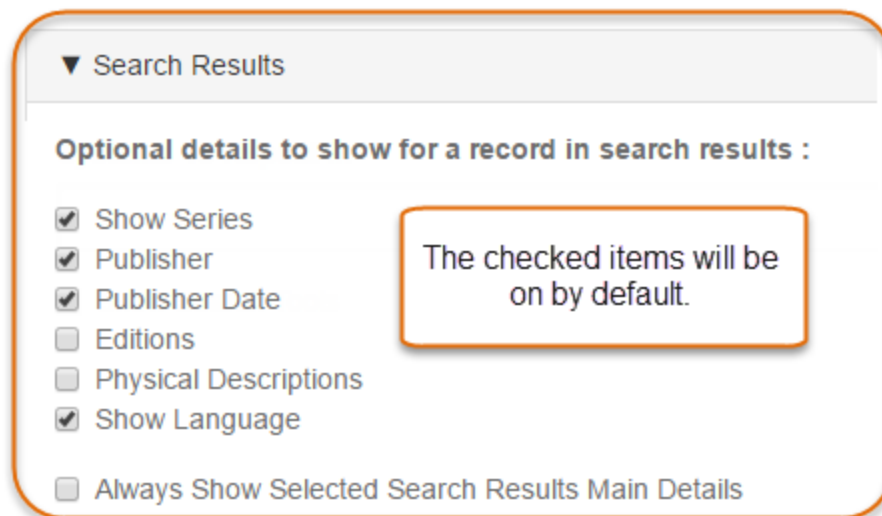
Publisher: Springer
Pub. Date: 2014.

Choose a Format

+ eBook **Available Online** Access Online
Show Edition CMU Electronic Access

Chemistry: The Key to our Sustainable Future is a collection of selected contributed papers by participants of the International Conference on Pure and Applied Chemistry (ICPAC 2012) on the theme of "Chemistry: The Key for our Future" held in Mauritius in July 2012. In light of the significant contribution of chemistry to benefit of mankind, this book is a collection of recent results generated from research in chemistry and interdisciplinary areas....

-
- Additional details can now be shown or hidden within search results for individual works.
 - Series
 - Publisher
 - Publication Date
 - Editions
 - Physical Descriptions
 - Languages



▼ Search Results

Optional details to show for a record in search results :

- ☒ Show Series
- ☒ Publisher
- ☒ Publisher Date
- ☐ Editions
- ☐ Physical Descriptions
- ☒ Show Language
- ☐ Always Show Selected Search Results Main Details

The checked items will be on by default.

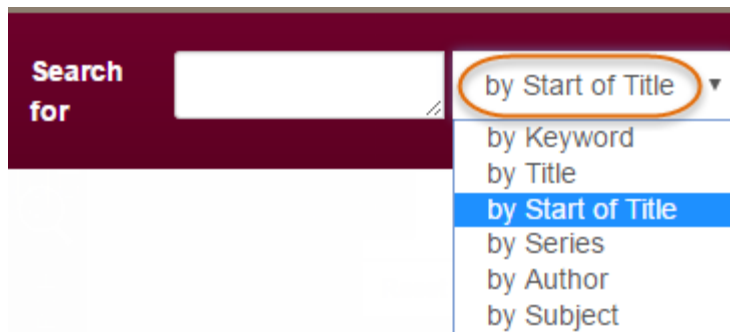
- Additional customization of which subjects can be viewed in full record view. Can now turn on or off:
 - LC Subject
 - Bisac Subjects
 - Fast Subjects
 - Other Subjects



▼ Full Record Display

- ☐ Show Library of Congress Subjects
- ☐ Show Bisac Subjects
- ☐ Show OCLC Fast Subjects
- ☐ Show Other Subjects

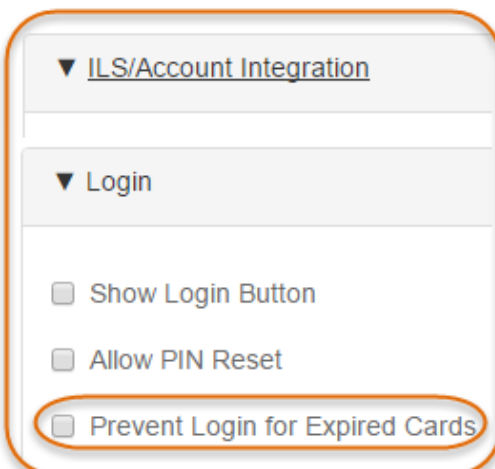
- Starts with Title Search



Search for

- by Start of Title ▼
- by Keyword
- by Title
- by Start of Title
- by Series
- by Author
- by Subject

- Added handling for audiences of | (no attempt to code)
- Can now configure whether or not to prevent logins for expired cards. If turned on the patron will get a message that they are expired but will not be allowed to see account information.



▼ ILS/Account Integration

▼ Login

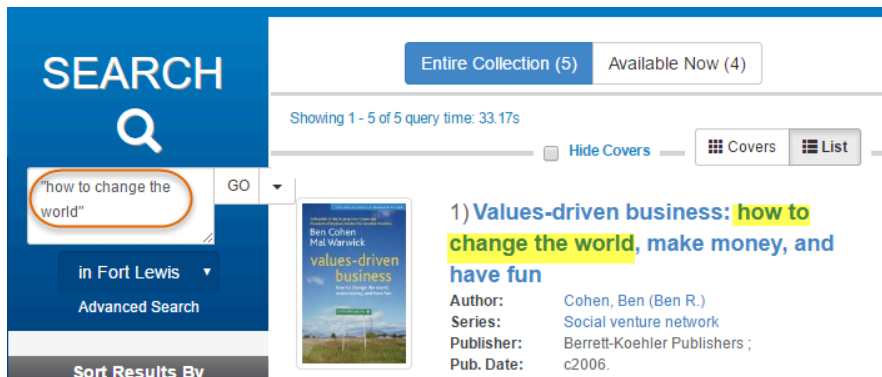
- ☐ Show Login Button
- ☐ Allow PIN Reset
- ☐ Prevent Login for Expired Cards

- Covers are now loaded from the vendor for
 - ebrary sideloaded content
 - Lynda.com sideloaded content
- Allow configuration of maximum allowed holds by PType for libraries not on Sierra/Millennium.

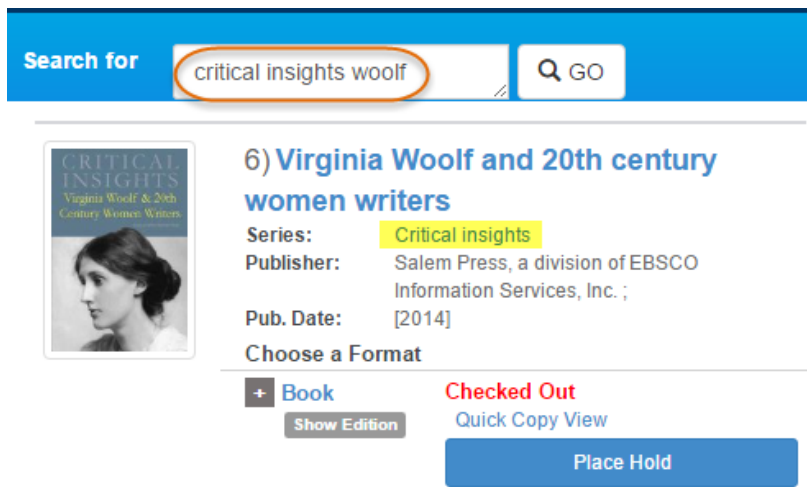


Bug Fixes

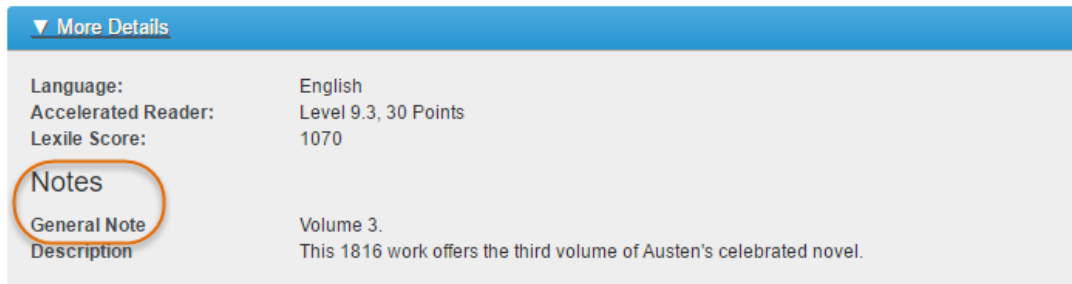
- Call numbers with repeated subfields are now shown properly
- Order records from Sierra are now suppressed if code4 is set to n
- Searches with quotes were still stemming within table of contents searches (i.e. "how to change the world")



- Keyword searches were not capturing some records if the order of keywords in the query did not match the order in the MARC record or if they were a significant distance away due to proximity searching. Removed the proximity restrictions.



- If a title had copies that were available for In Library Use Only at another location, that status was incorrectly displayed even though other copies were available for holds.
- Updated to ignore 300e (related content) when checking format
- If a title is detected as both Video and VideoDisc we now force the DVD format to be used.
- If a title is detected as both Blu-Ray and VideoDisc we now force the Blu-ray format.
- E-mail my PIN is now working for Horizon libraries
- Updated display for eContent to include Notes



- Title displayed in search results now prefers the title from Books to give catalogers more control over formatting.
- Better handling of patrons where the home location could not be determined because the home location does not exist as a location in Pika or is not set within the ILS. Will now default to the main branch for the library or to the first branch for the library until the branch is updated in the ILS. Not having a home branch set caused a variety of errors.
- Significantly reduced memory usage when loading content enrichment and more like this information.
- Author and publisher now have trailing punctuation removed when displayed in search results.
- Exporting a large number of materials requests to Excel now works properly.
- OverDrive staff view had http content that caused mixed content type warnings when accessing Pika via HTTPS

Side loading setups

- OneClickDigital for Englewood
- Lynda.com for EVLD
- Ebrary for Adams State University (transfer of records to EBSCO)

Documentation

- Additional documentation has been added to library configurations. All sections should now have some documentation for them.
- Materials Request functionality has been documented both from administrator and user perspectives.

Digital archive work in Pika

- New Archive Home page showing a list of projects and types of materials within the archive.

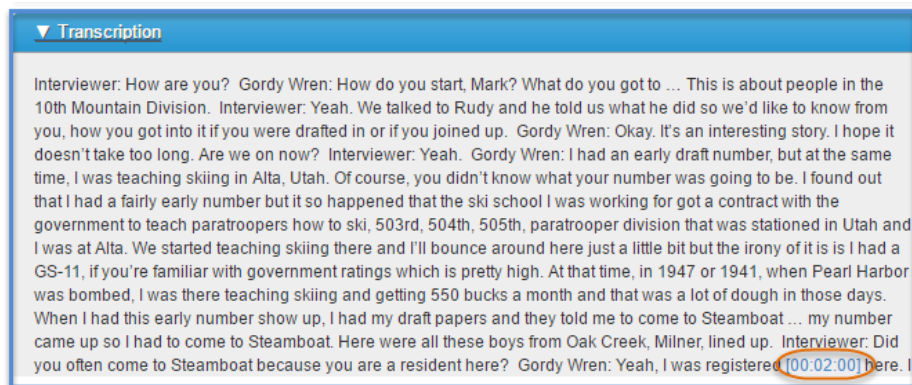


- Individual projects can be removed from the homepage based on metadata within Islandora
- Lo-Res images (jpg source)
 - Larger image is displayed by default to fill width of the page
- Hi-Res images (tiff source)
 - Image is now shown within open sea dragon for improved zooming. This also improves security of the original since the image is delivered in pieces to the user so they never see a full resolution copy of the original.
- All Images now allow restriction of which sizes can be downloaded based on metadata within the collection they are contained within.

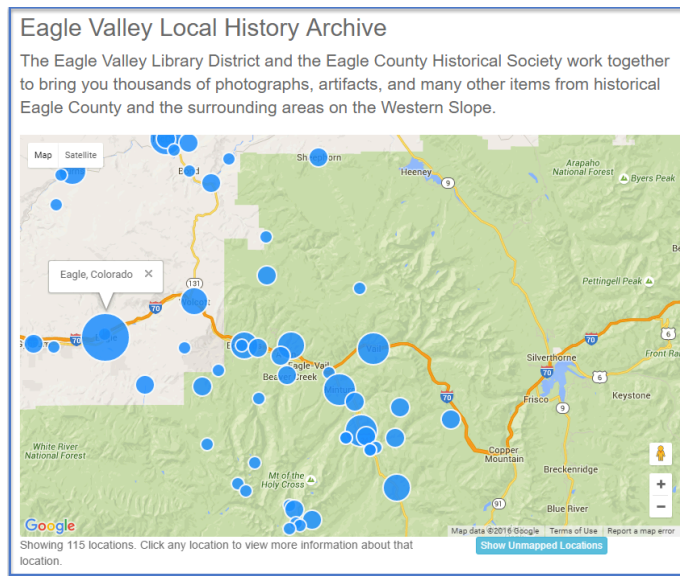
[Login to Download Large Image](#)

[Login to Download Original Image](#)

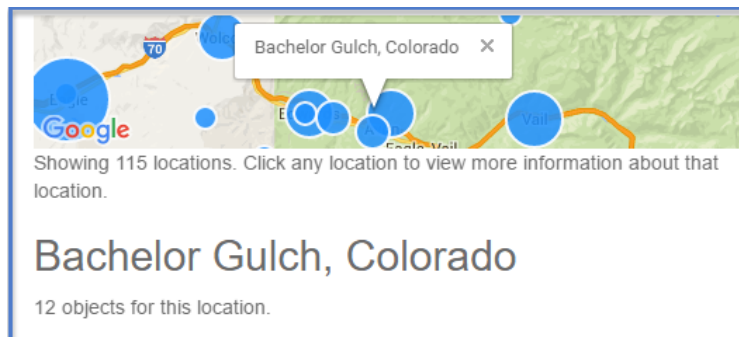
- Audio File Transcript allows jumping to different areas within the audio file.



- Collections can be browsed on a map



- Up to 250 places can be shown at once
- Size of the marker depends on the number of objects related to that place
- Clicking on a marker show objects related to that place



- If more than 24 objects exist for the location, the user can page to the next set of results



- Objects can be filtered based on the year they were created if entered.

1880's (1)	1890's (1)	1900's (12)	1910's (51)	1920's (33)	1930's (54)	1940's (47)	1950's (8)	1960's (12)	1970's (5)
1980's (46)	1990's (8)	2000's (42)	2010's (55)	Unknown (240)					

- Places that do not currently have Latitude and Longitude available are shown in a popup window accessible by clicking on a button.

Show Unmapped Locations

- Whether or not the collection is viewed on a map is set by metadata in Islandora
- When clicking on locations, the url updates and can be bookmarked/shared with other users.

- Caching of information from GeoNames and Who's On First
- Some performance work (more to be done still)

Other Changes

- CMU is live on Pika now
- Updated theme for Aspencat
- Updated theme for Summit County
- Updated logo and header for Gunnison County Libraries
- Searching section of Library Settings has been re-arranged to make a bit more sense
- Postcards from Fort Lewis are still uploading
- Automatically copy export from Arlington to test server