

## Early Learning Accountability Report for 2020-21

Early Learning refers to educational programming for children before they enter Grade 1. Early Learning has established three main areas of focus. They include: (a) developing powerful early educational environments (b) early identification and intervention (c) establishing and sustaining partnerships. These areas of focus were developed through the Early Learning Framework Committee, a working group comprised of Wild Rose School Division (WRSD) personnel, parents and community partners such as: Alberta Health Services, Clearwater Early Childhood Coalition, Parent Link Centres, MacMann, Family & Community Support Services, and local playschools, preschools and childcare centres. The key work product of this committee is the [WRSD Early Learning 3 Year Plan 2019 - 2022](#).

For the 2020-2021 school year, WRSD enrolled 286 kindergarten students and 63 PreK students in our programs. WRSD provided PreKindergarten programming in 5 schools this year; including 3 independent programs at Lochearn, École Rocky Elementary and Caroline. We also provided combined PreK/kindergarten programs at Drayton Christian, Condor and Breton schools.

### Early Years Evaluation Assessment Tool (EYE-TA) & GLA Results

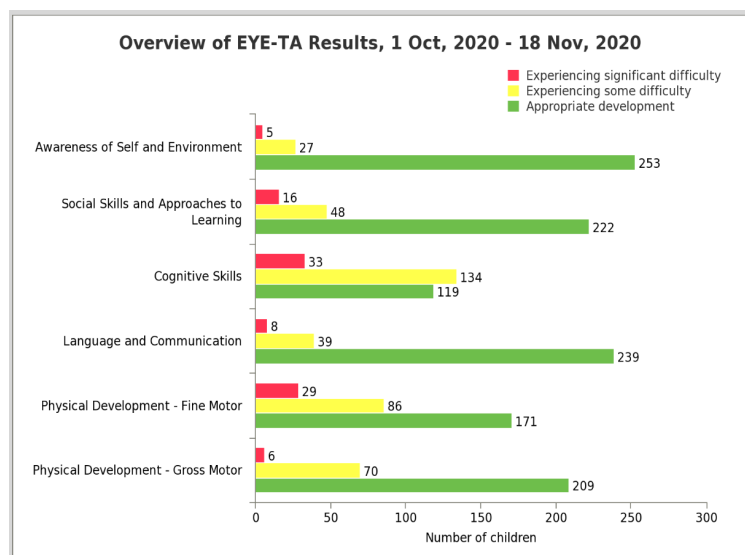
For the fourth year, all children in kindergarten were assessed with the *Early Years Evaluation Assessment Tool (EYE-TA)*. This far this school year, this tool has only been utilized once, in October 2021, due to school closures in April & May. We also collected *Grade Level Achievement (GLA)* data in June 2021. In completing the GLAs, we collected student achievement data in literacy and numeracy. For the EYE-TA, we collected data in the following five key domains:

- (1) Awareness of Self and Environment, (2) Social Skills and Approaches to Learning, (3) Cognitive Skills (literacy & numeracy), (4) Language and Communication, and (5) Physical Development (Fine & Gross).

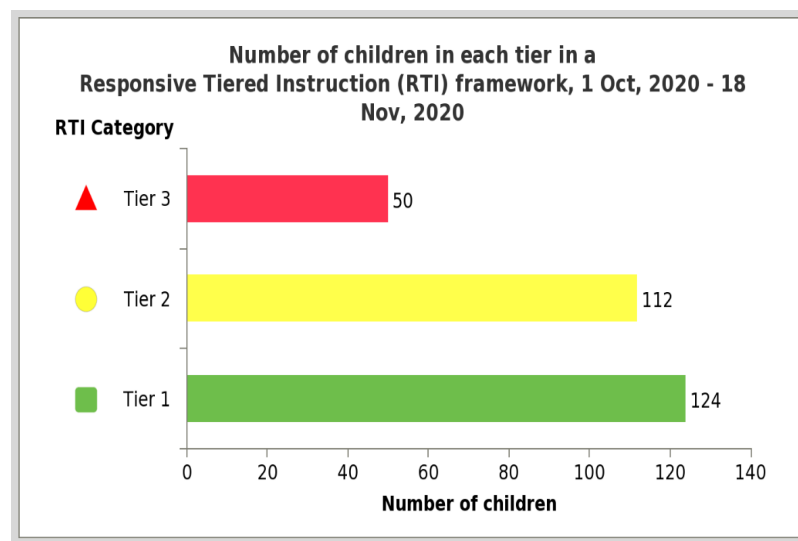


### EYE-TA Comparison of Overall Results

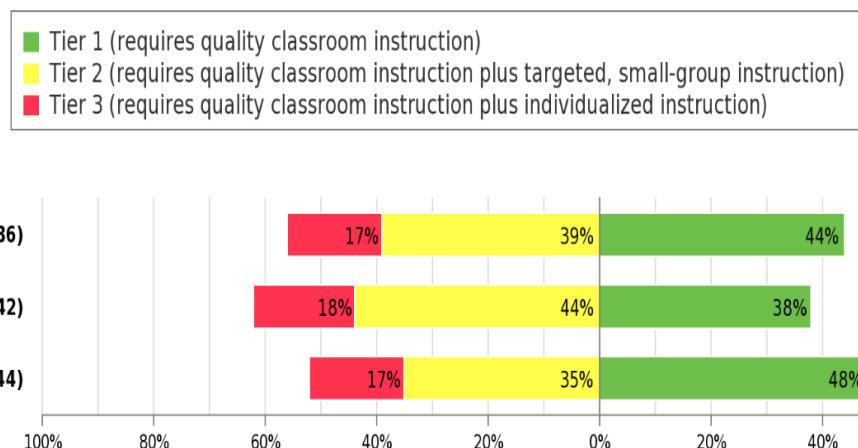
October 2020



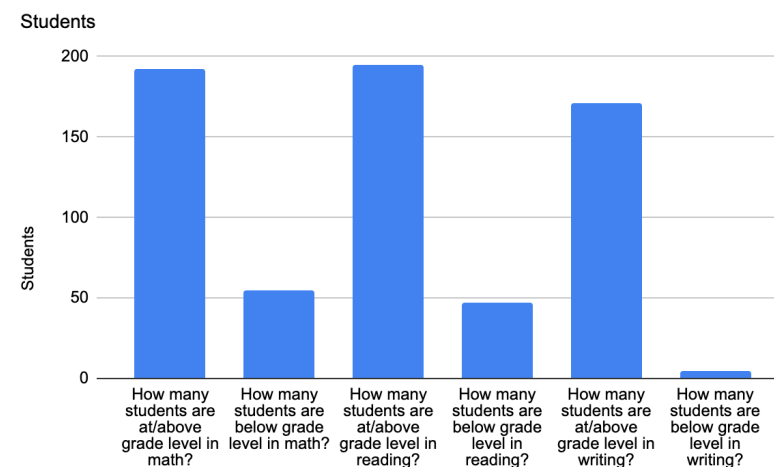
October 2020



## Percentage of Children at Risk October 2020



## Grade Level Achievement in June 2021



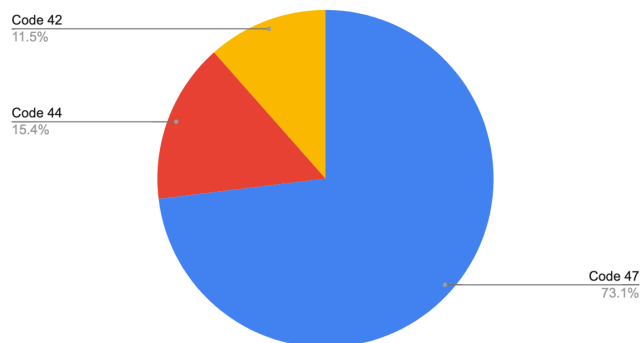
## Program Unit Funding

Program Unit Funding (PUF) is additional funding provided by Alberta Education for children with significant delays. There were a number of substantial changes to Program Unit Funding for the 2020-21 year, including the following:

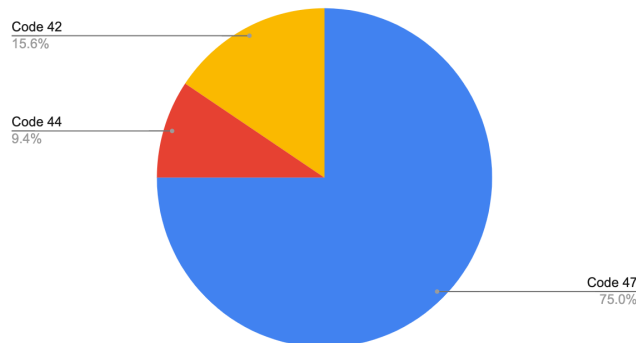
- Reducing the age of eligibility requirement from 2.8-6.0 years of age to 2.8-4.8 years of age.
- Changing the eligibility requirement so that children that have articulation, fluency or phonological delays/disorders, without a language component, OR children with moderate delays (fine motor or gross motor skills), no longer qualify.
- Changing the funding model so that children with severe speech and language delays are not funded at the same rate as other severe disabilities, and setting program hour minimum requirements (400 hours per year).
- Removing the additional funding for *Family Oriented Programming (FOPs)*.

In 2019-2020, Wild Rose School Division (WRSD) had a total of **25** PUF students (PreK). We also had **32** Kindergarten students with severe delays.

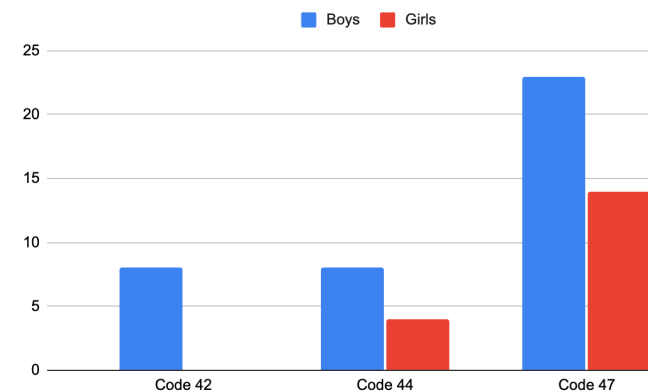
### PreKindergarten



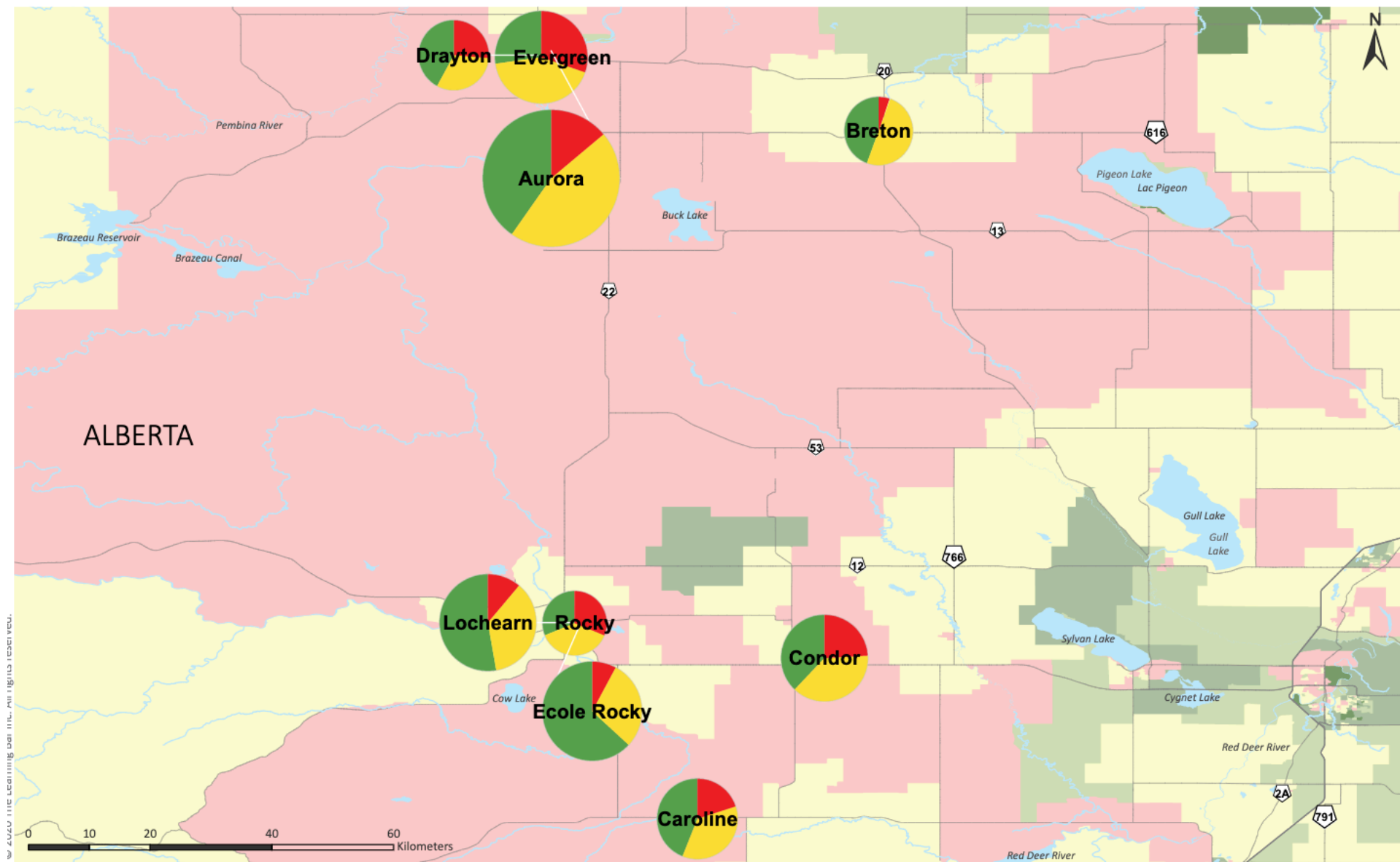
### Kindergarten



## Gender



# SocioEconomic Status & RTI Response to Instruction Community Comparisons



- Low
  - Low - Middle
  - Middle
  - Middle - High
  - High
- RTI Tier 1  
Requires quality classroom instruction.
  - RTI Tier 2  
Requires quality classroom instruction, plus targeted, small group instruction.
  - RTI Tier 3  
Requires quality classroom instruction, plus individualized instruction.

The size of each pie chart is proportional to the number of children assessed.



Map Image Layer copyright of The Learning Bar's Socioeconomic Status categorization along with Esri Dissemination Area divisions, which is licensed under the Esri Master License Agreement. The dataset is based on Statistics Canada's official release 2016 Census and Environics Analytics CensusPlus.