

# Light LED Strip with Input

## LED Strip

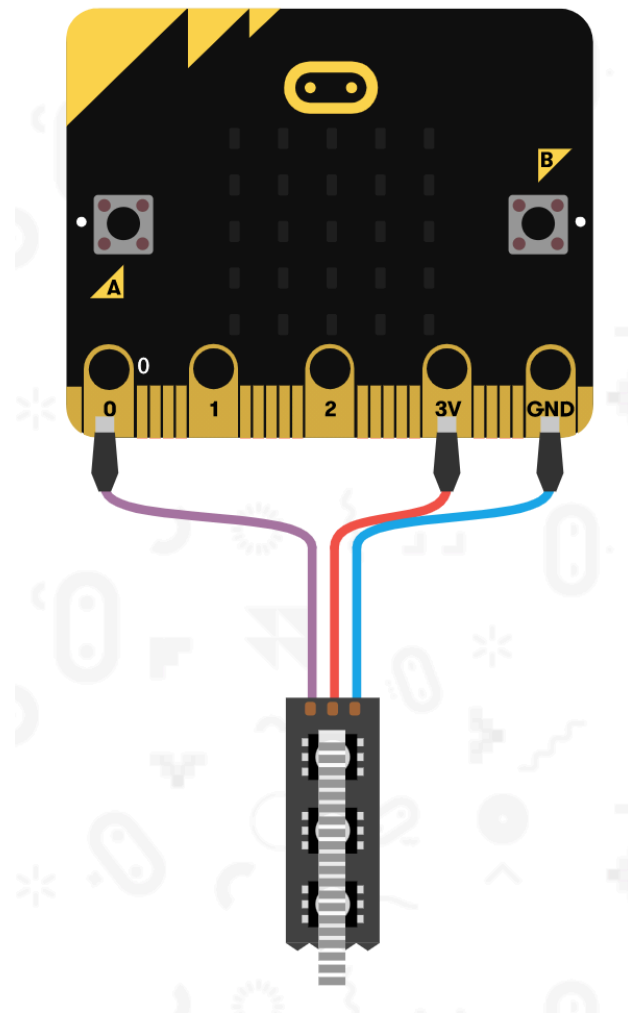
**Required skills:** Load code to micro:bit, Light LED strip solid color

**MB skills:** Basic Inputs

**Level:** Basic

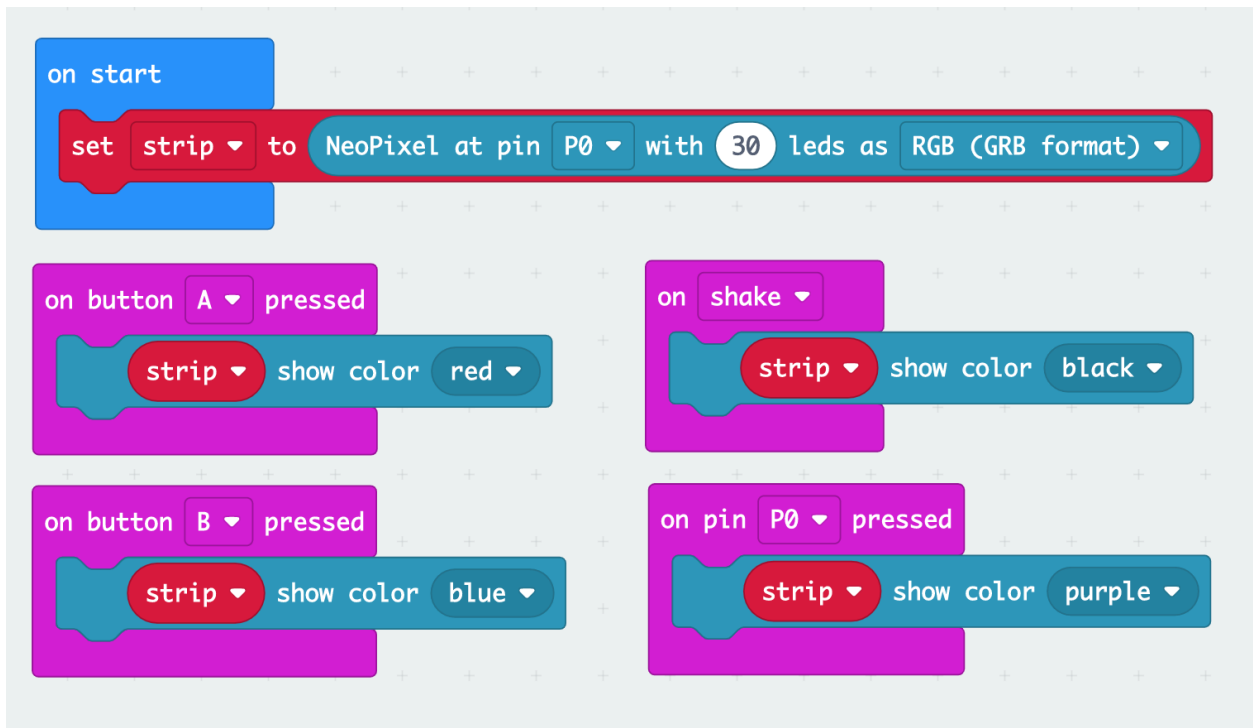
### MB Set Up:

Connect the LED strip as shown, with data input connected to P0.



## MB Code:

1. Install the Neopixel Extension. Refer to [Adding Extensions](#) Document for instructions.
2. Select an input that will trigger the LED strip to turn on from the Inputs section. Some options you can try:
  - a. On button A Pressed
  - b. On shake
  - c. On Pin P0 Pressed [Only if you have micro:bit v2]
3. Inside of the input block, create the block that tells the Neopixel what to do. Here's some example code: <https://makecode.microbit.org/76H10YafjTkc>



4. Flash the code to the micro:bit.