

**THIRD PERIODICAL TEST
SCIENCE V**

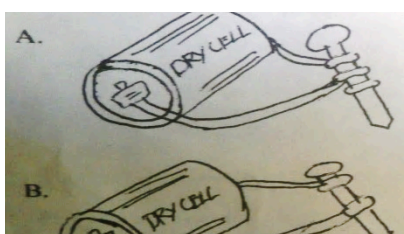
NAME: _____

SCORE: _____

Directions: Read the following questions or situations. Write the letter of the correct answer.

1. Which of the following is a good characteristic of all kinds of matter?
A. They have mass and occupy space. C. They have no definite color and shape.
B. They have definite color and shape. D. They produce sound and odor.
2. Which is a good way of making water safe to drink?
A. Add chemicals to it. C. Boil it.
B. Use cloth as filter. D. Keep inside the refrigerator.
3. Smoke coming from the vehicles mixes with air. What will happen with the air?
A. Air becomes fresh. C. Air becomes polluted.
B. Air moves faster. D. Air is heated.
4. Which of the following is badly affected by air pollution?
A. man's health B. animal life C. plant life D. all of the above
5. Which of the following describes a physical change?
A. hardening of clay B. burning of wood C. souring of milk D. burning of paper
6. How do you prevent an iron from rusting?
A. Wrap the iron with plastics to prevent contact with moisture in air.
B. Heat the iron to remove the water on the surface.
C. Soak the iron in water to exclude air from the surface.
D. Paint the iron to exclude air in the surface.
7. What happens to the substance in a chemical change?
A. They do not combine. C. They combine with other substances to form a new substance.
B. They do not lose properties. D. The change properties.
8. Why is boiled water safe to drink?
A. Boiling dissolves all solid particles. C. Boiling improves its taste.
B. Boiling removes solid particles. D. Boiling kills the germs present in the water.
9. What is the result of a chemical change?
A. A new molecules C. Change in shape
B. The same molecules D. A bigger molecule
10. Your mother cooked afritada. In the evening when you look over at the leftover food you saw some bubbles on the surface, what do you infer?
A. The afritada is already spoiled. C. The afritada improves its taste.
B. The afritada is still good to eat. D. The afritada can still be saved for the next day.
11. Sugar, wood and paper turned black when burned. What substance do they have in common?
A. oxygen B. carbon C. nitrogen D. moisture
12. Why is the presence of chloroflouro- carbon in the air is harmful?
A. It darkens the cloud. C. It makes the ozone layer thick.
B. It makes the ozone layer thin. D. It prevents the ultra violet rays coming from the sun.
13. The government encourages motorists to use unleaded fuel. Why?
A. It is less harmful to people and environment. C. It is safer to use.
B. It is cheaper. D. A and C is correct.
14. Materials that can allow electric current to pass through are considered as _____.
A. conductors B. Insulators C. circuit D. electromagnet
15. It is a device which open and closes a circuit.
A. switch B. fuse C. dry cell D. metal
16. It can attract iron or steel because of electricity.
A. bar magnet B. electro magnet C. horse shoe magnet D. permanent magnet
17. Which of the following is a flowing electricity?
A. current electricity B. frictional electricity C. static electricity D. none of the above

18. Which of the following measures the amount of electricity used in home or building in a period of time?
- A. electric meter B. gas meter C. galvanometer D. wind vane
19. Which of the following is a safety device that is put in a circuit to connect the parts of the circuit?
- A. bulb B. copper wire C. dry cell D. switch
20. When Lydia runs she used up energy to produce more energy for greater speed, what must she do?
- A. Exhale so there will be less oxygen. C. Make shorter steps.
B. Inhale deeply for more oxygen. D. Swing hands for more energy.
21. Which part of an atom has a positive charge?
- A. electrons B. protons C. neutrons D. all of the above
22. What happens when you rub a comb on a piece of wood?
- A. The comb gains protons. C. The comb loses protons.
B. The comb gains electrons. D. The comb loses electrons.
23. Why is static electricity not useful?
- A. It cannot flow in a circuit. C. It has a very high voltage.
B. It is very dangerous to use. D. It cannot be controlled.
24. Which of these breaks a circuit as a safety measures?
- A. wire B. fuse C. bulb D. transformer
25. Why does the bulb light?
- A. Electricity is inside the bulb. C. Electricity jumps from the dry cell to the bulb.
B. Electricity flows in a complete circuit. D. Electricity is changed into chemical energy.
26. How can we conserve electricity?
- A. Leave the radio on the whole day. C. Switch on the light while you are sleeping.
B. Turn off the light when it is not used. D. Iron clothes every day.
27. What a bad effect of a short circuit?
- A. brown out B. loses protons C. gains electrons D. loses electrons
28. How is a force of a dry cell measured?
- A. When the circuit is not complete. C. When there is lightning.
B. When the circuit is complete. D. When there is too much heat.
29. Why is a short circuit dangerous?
- A. It has a high voltage.
B. The sudden rush of current creates too much heat that can cause fire.
C. It has its own loop.
D. Electricity does not cause fire.
30. What happens when you connect several bulbs in a series?
- A. Lessen the resistance.
B. Electricity flows.
C. It increases the resistance and this can connect several bulbs on a low voltage bulb on a high voltage line.
D. None of these.
31. What do you call the pressure that is needed to push the current through the wire?
- A. voltage B. watts C. fuse D. circuit
32. You are going to make a plan for a house, what kind of electrical connections will you use?
- A. a series connection B. circuit connection C. megawatt connection D. parallel connection
33. A strong typhoon visited our country trees, small houses and electrical post were destroyed, why should you avoid stepping on the broken wires?
- A. You may get hurt. C. Brown out may occur.
B. You may get electrocuted. D. A and B are correct.
34. After washing the plate you turned on the light, suddenly your hand trembled, why?
- A. You have an electric shock. C. There was a brown out.
B. You saw something scary. D. You are so glad that time.
35. If you find your electric bills are getting bigger, what should you do?
- A. See the nearest Meralco station. C. Ignore the electric bill.
B. Conserve electricity. D. Do not use any electric appliances.
36. An electromagnet is surrounded by a coil of wire through which an electric current passes through. Which electromagnet can attract more pins?



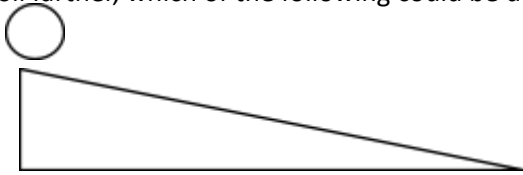
37. Why can machines make our work easier faster and easier?

- A. Machine resists force.
- B. Machine can stand wear and tear.
- C. Machine overcomes a great force with less effort.
- D. Machine can exert more effort than resistance.

38. First you saw a carpenter on the ground with materials for roofing, after a while you saw him on the rooftop fixing the roof. What could have he done?

- A. He used a big rope to climb the rooftop.
B. He used a ladder to climb the roof top and a pulley to lift the roofing materials.
C. He used a long lever to climb the rooftop and lift the materials.
D. He used a pulley to climb and lift the materials.

39. A ball that is placed on the top of an inclined plane is released so that it rolls down the plane. The ball continued to roll after it reaches the bottom of the inclined plane. If you want to make the same ball roll farther, which of the following could be done?



- I. Use a longer inclined plane.
- II. Increase the height of the plane.
- III. Decrease the height of the inclined plane.
- IV. Release the ball from the topmost end of the plane.

- A. I only. B. II only. C. I and III D. II and IV

40. A construction worker wants to lift a heavy steel bar to the top of the building. Which machine would help him to do the job efficiently?

- A. fixed pulley B. lever C. wheel and axle D. wedge

41. Which of the simple machines below is a double inclined plane used for cutting wood?

- A. ramp B. axe C. needle D. crowbar

42. Which machine reduces friction?

- A. wedge B. lever C. inclined plane D. Screw

43. A can of biscuit is usually opened with a spoon. What kind of simple machine is the spoon?

- A. wedge B. lever C. inclined plane D. wheel and axel

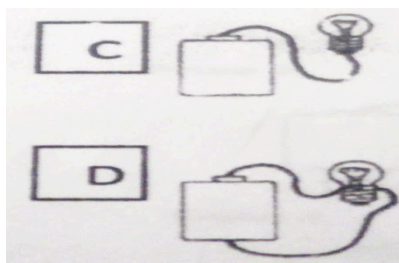
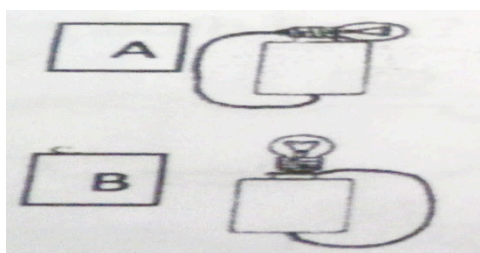
44. Mang Emong bought a cow. How could he make the cow go up to the truck?

- A. a wedge B. a lever C. an inclined plane D. a screw

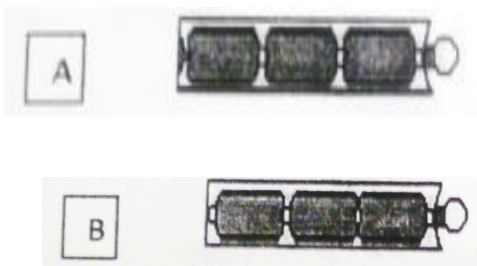
45. Calesa can pull faster than a sledge, why?

- A. Calesa is pulled by a horse.
B. Calesa is run by a machine.
C. Sledge is pulled by a carabao.
D. Calesa has wheel and axle.

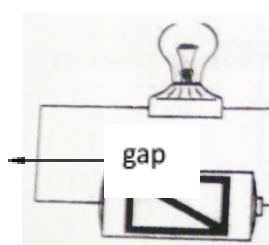
46. Which connection can make the bulb light?



47. A flash light holds three batteries. How should the batteries be placed to make the flash light work?

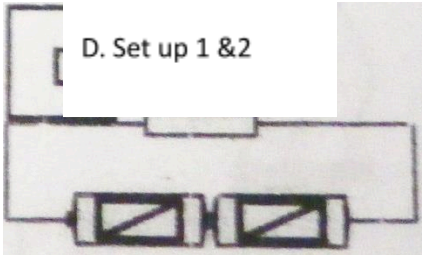
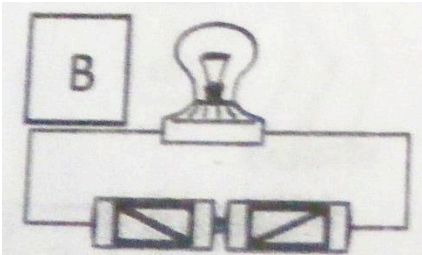
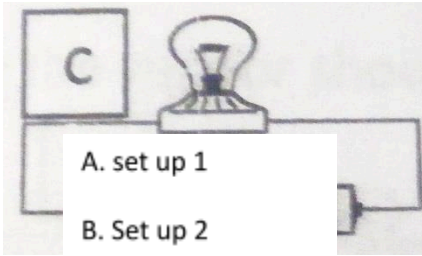
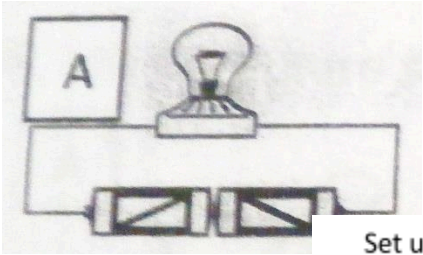


48. Which will you use to close the gap between the ends of the wires to make the bulb light?



- A. iron nail
B. plastic straw
C. rubber band
D. tooth pick

49. In which electric circuit will the bulb light?



50. When a wedge is inserted under an object what can it do?

- A. It pushes the object.
- C. It cuts the object.
- B. It pulls the object.
- D. It lifts the object.

Key to correction:

1 A	9A	17A	25B	33D	41B	49C
2C	10A	18A	26B	34A	42D	50D
3C	11B	19D	27A	35B	43B	
4D	12B	20B	28B	36C	44C	
5A	13D	21B	29B	37C	45D	
6D	14A	22B	30C	38B	46B	
7C	15A	23A	31A	39D	47A	
8D	16B	24B	32D	40A	48A	