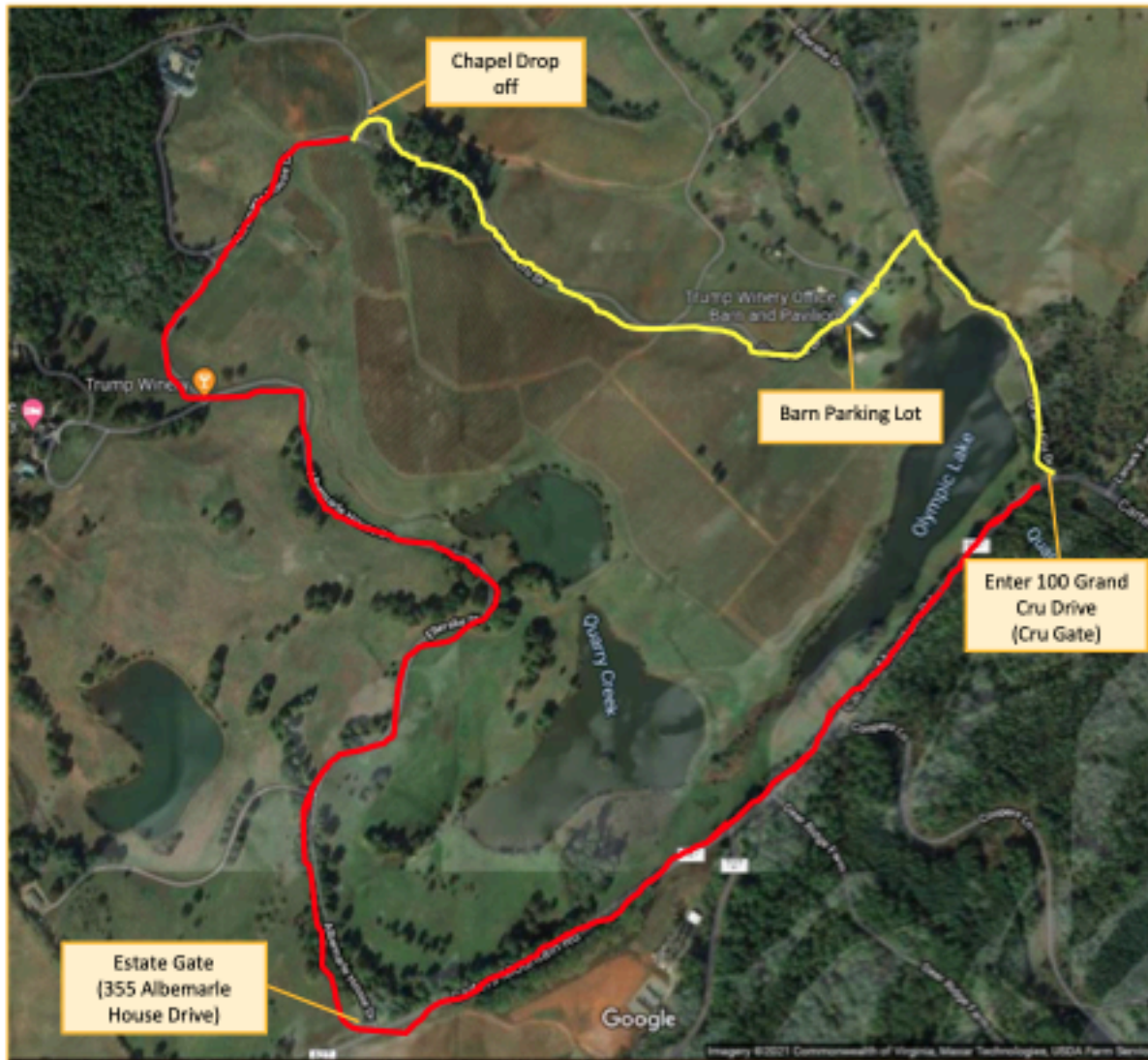


Trump has recently updated their parking lots - please use this information going forward - As of 10/21/21 - Quicks will NOT go here

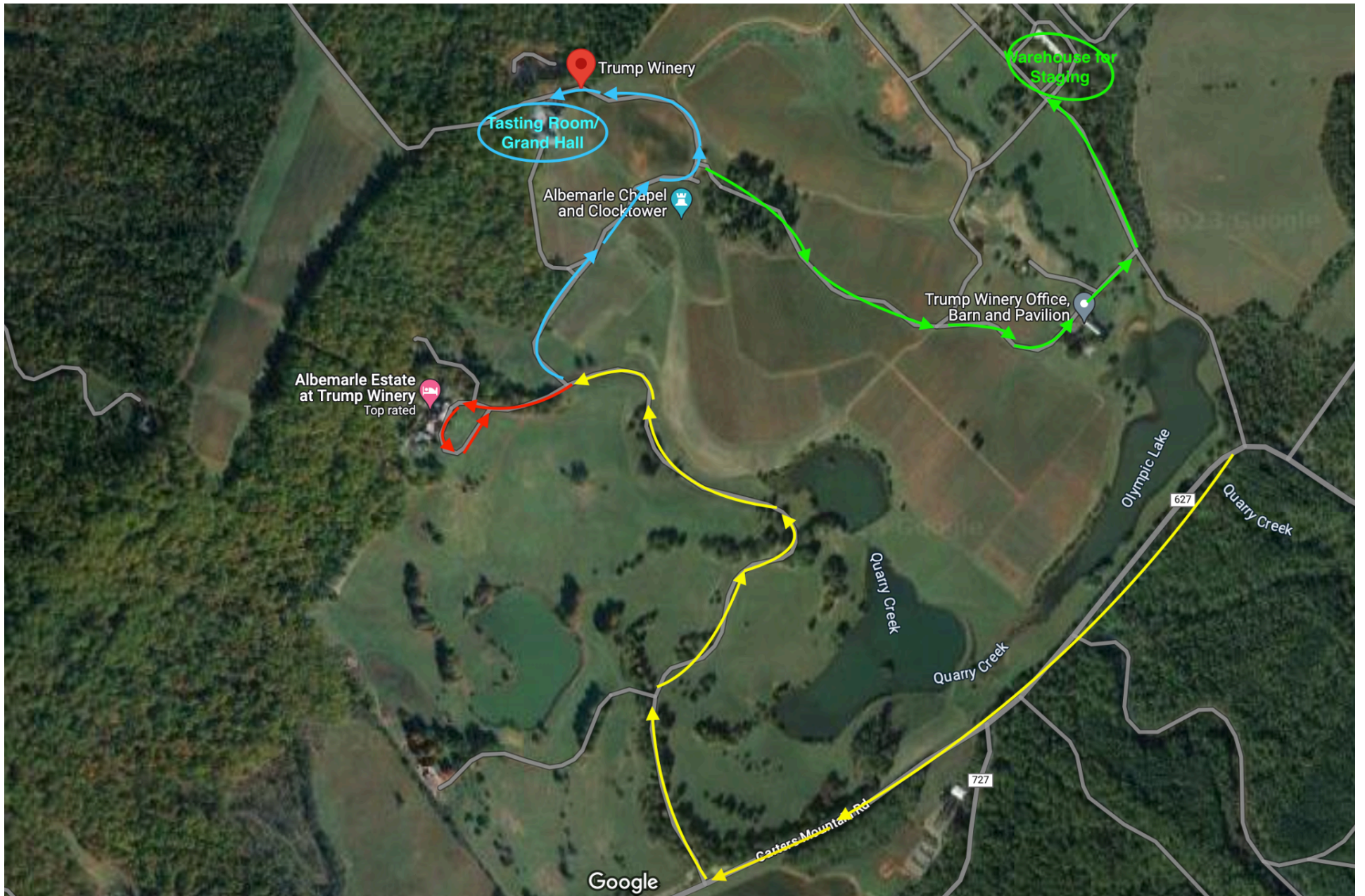


Shuttle Directions to Trump Winery Chapel (through Cru Gate)

1. Busses should enter at Cru gate near the Barn (100 Grand Cru Drive)
2. They can stop at the Barn for people to use the restroom and then continue up to the Chapel.
3. We've done some repaving in the area of the Chapel, so it's harder for the busses to pull into that lot. If you feel you can safely pull in and then back out, that's fine, but you may want to just stop on the road and unload next to the parking lot. Be aware that our Tasting Room is now open at the Grand Hall, so there is a steady flow of traffic on that road until 5pm.
4. After dropping guests off at the Chapel, you can either:
 - continue to exit out the Estate gate, make a left on Carters Mountain Rd, and then reenter at the Grand Cru Gate and stage in the Barn parking lot until the ceremony is over.
 - turn around in the Chapel lot and drive back down to the Barn lot to wait.

AFTER 5PM, if there is no event at the Grand Hall, you are welcome to park in the upper parking lot by the Grand Hall.

FOR PICK UP AFTER THE CEREMONY, if you are concerned about turning around at the Chapel, you may enter through the Estate gate, pick up at the Chapel and continue down to the Barn lot for drop-off.



Trump Barn/Pavillion Parking Lot

- Smaller parking lot. Vendors are required to park on the grass or the back row of the lot. Should be open unless guests drive themselves. 32 passenger and larger will have issues turning around in this parking lot, especially if other cars are there. Suggested to come in through the Estate gate and continue to Barn/Pavillion. Once guests are dropped off, go straight out of lot and make a left up to the Warehouse to turn around and/or stage.



Barn/Pavillion



Barn/Pavillion



Barn/Pavillion



Warehouse Lot - can be used for turning around or staging





Chapel - Small lot, cannot take larger coaches here. If Chapel is being utilized and client's want shuttles between either the Barn/Pavillion and the Chapel or between the Grand Ballroom and the Chapel then 14 passenger vans will need to be reserved as well.



Grand Ballroom - Large lot for larger buses to pickup/drop off/stage in front of Grand Ballroom



Getaway car can pull into courtyard and stage by fountain



Another parking lot where buses can stage. There is a road that makes a loop around the parking lot but may be too tight for anything larger than a 23 passenger coach.

