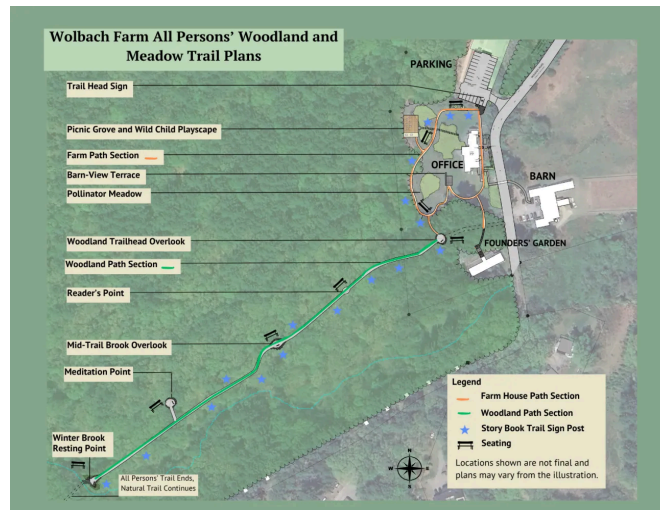


MSMCP  
BROWN BAG SERIES



**ALL PERSONS' TRAIL TOUR  
WEDNESDAY AUGUST 27, 2025**

**11:00am-1:00pm**

**Wolbach Farm @ Sudbury Valley Trustees  
18 Wolbach Road, Sudbury**

Join MSMCP on a tour of the first phase of the All Persons' Trail at Wolbach Farm in Sudbury. Sudbury Valley Trustees Cecil Hynds-Riddle, Director of Development, and Dan Stimpson, Director of Land Management, will provide an overview of the need, the process, trail materials, what they have learned about ADA guidelines, including resting places, furniture and structures, along with how this project has been funded. In addition, they will discuss the challenges in creating the second phase of the project where the trail will work its way into a wooded area on the property. Along the trail is the farmhouse, pollinator meadow, a terrace seating area and a picnic grove where participants can ask questions and enjoy their lunch beneath the trees.

**RSVP Requested Below** - Let us know if you are planning on joining us. Please consider carpooling.

Name	Email Address	Questions
Liz Allard	lallard@harvard-ma.gov	
Karen Mullins	kmullins@lexingtonma.gov	

[illegible]

--	--	--