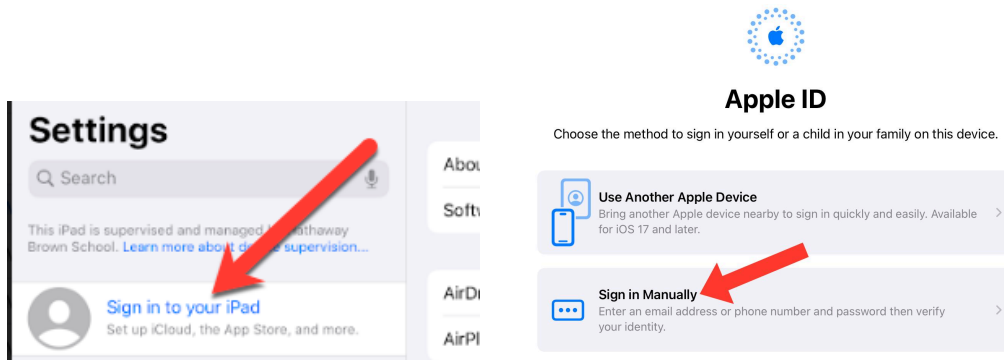


APPLE ID

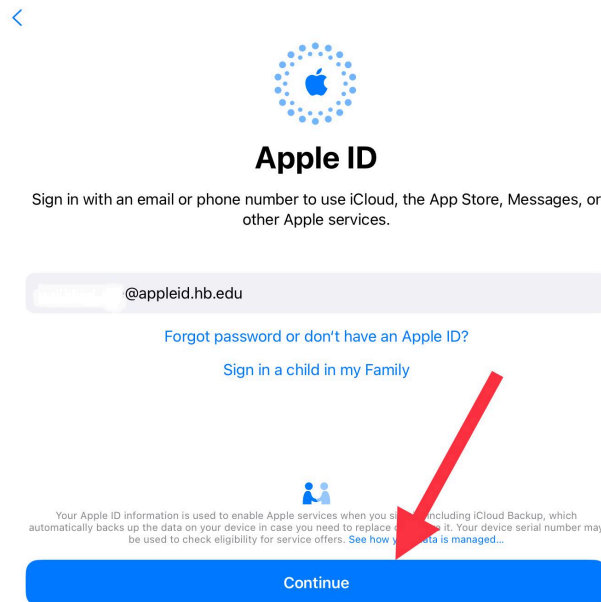
1. You should have received two emails from Apple. Email helpdesk@hb.edu if you need the password resent to you.

<input type="checkbox"/> ☆	Apple School Manager	Your Verification Code - Welcome, CGC Demo! Use this Verification Code to access yo...
<input type="checkbox"/> ☆	Apple School Manager	Set Up Your Managed Apple ID - Welcome, CGC Demo! Use this sign-in information to ...

2. Open the two emails from Apple and make note of the Temporary Password and the Verification Code. Note that the password is case sensitive.
3. Open **Settings**. In the upper left corner, select **Sign in to your iPad** and then select **Sign in Manually**.



4. Enter your HB school managed Apple ID and select **Continue**. (Your school Apple ID is your first initial, last name, grad year and @hb.edu). It appears that you MAY need to use a capital letter for the first letter of your Apple ID.



5. Enter your temporary password from the email and select **Continue**

Apple ID

Sign in with an email or phone number to use iCloud,
the App Store, Messages, or other Apple services.

@appleid.hb.edu

Password

Forgot password or don't have an Apple ID?

Sign in a child in my Family

Your Apple ID information is used to enable Apple services when you sign in, including iCloud Backup, which automatically backs up the data on your device in case you need to replace or restore it. Your device serial number may be used to check eligibility for service offers. [See how your data is managed...](#)

Continue

6. Enter the temporary password for the Current password. For New and Verify, enter the password you want to use. The password must be 8 characters, including a number, an uppercase letter and a lowercase letter. You are allowed to use your HB assigned password for your Apple ID password.

Cancel

Change

Create a Password

You must update your password before signing into
your Apple ID.

Current

required

New

enter password

Verify

re-enter password

Your password must be at least 8 characters, include a number, an uppercase letter, and a lowercase letter.

7. Select **Change**. Wait as the account connects to iCloud

Signing in to iCloud...

8. Select **iCloud**.

Settings

Search

This iPad is supervised and managed by Hathaway Brown School. [Learn more about device supervision...](#)

Apple ID, iCloud, iTunes & App Store

Airplane Mode

Wi-Fi

Bluetooth

Notifications

Sounds

Apple ID

Name & Email

Password & Security

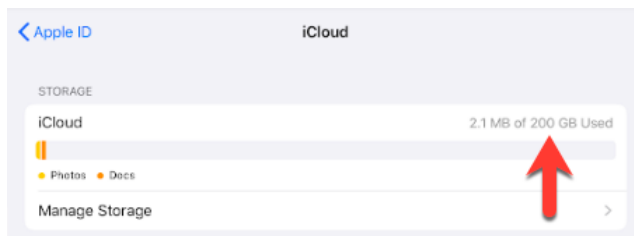
Subscriptions

iCloud

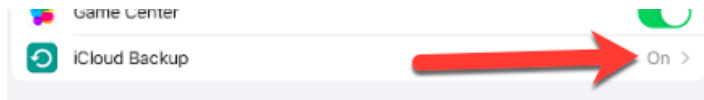
iTunes & App Store

This iPad

9. Confirm you have 200 GB of iCloud storage available.



10. Scroll down and confirm that **iCloud Backup** is **ON**.



11. Keep the verification code handy in case you ever need to log in to iCloud from iCloud.com or from a personal Apple device.