

Title (Type With Capitalize Each Words)

Author^{1*}, author², author³
¹affiliation, ²affiliation, ³affiliation,

ORCID ID author1:

ORCID ID author2:

ORCID ID author3:

*Corresponding author: email

Abstract (An abstract includes a purpose, a brief method, a result, and a conclusion that covers the entire study. Abbreviations should not be used without definition)

Keywords: first, second, third (Include 3-5 keywords according to alphabetical order)

Introduction (The scope, problem background, study contributions, and research implications are all included in the introduction. In order for the reader to comprehend and evaluate the study's findings without having to read earlier studies on the subject, this part should give background information and a problem description. Include references that can support discussion)

Materials and Methods (Describe a clear and comprehensive explanation of the study's design, sample size, treatment method, materials used, parameter evaluation methods, and methodology. You should also include any essential statistical methods and an explanation of the animal's ethical behavior certificate. In order to facilitate a successful replication of the study, the work methods supplied must include sufficient information)

Ethical Approval (If your study uses experimental animals, an ethical statement accompanied by a certificate number is mandatory. If your study does not use experimental animals, also explain this in this section)

Study Period and Location (Describe the period and location of sampling, evaluation, laboratory and analysis for this study)

Results and Discussions (Research findings are presented and discussed in detail. Written research findings can be displayed as a paper, table, or figure. If a visual can be explained in the text, use less of it. Restrict the amount of photos you utilize, and only show images that amply demonstrate the outcomes. Tables and figures need to be numbered and cited within the text. Photos in PNG, JPG, and JPEG formats. The name of the program and the necessary data to create the graph are delivered with the data processing results in a different file from the manuscript file)

Conclusion (A precise, understandable conclusion that addresses research issues is required. Presented independently of the findings and discussion)

Acknowledgment (Aimed at research funders and acknowledging organizations and people that have supported scientific writing or research methods)

Authors' Contributions (Mention the assignment of each author as Conceptualization; Methodology; Software; Validation; Formal analysis; Investigation; Resources; Data

Curation; Writing - Original Draft; Writing - Review & Editing; Visualization; Supervision; Project administration; and Funding acquisition)

References (Alphabetically sorted by name and year of publication in APA Style format. Reference composition, i.e. 80% of journals and 20% of textbooks, others). The latest level of up to 10 years is recommended. Example of reference format:

Journal:

Cheng, Q., & Sun, D. W. (2018). Factors affecting the water holding capacity of red meat products: a review of recent research advances. *Critical reviews in food science and nutrition*, 48(2), 137-159.

Book:

Aberle, E. D., Forrest, J. C., Gerrard, D. E., & Mills, E. W. (2021). Principles of Meat Science. 4th edition. Kendal/Hunt Publishing Company. pp: 144-145.

Book Chapter:

Johnson, C. A. (2005). Cystic endometrial hyperplasia, pyometra, and infertility. In Ettinger, S.J., Feldman, E.C. (Ed) Textbook of veterinary internal medicine, disease of dog and cat. Tokyo: WB Saunders Co. pp: 1636-1642.

Abstract:

Anil, M. H., Love, S., Helps, C. R., & Habour, D. A. (2022). Potential for carcass contamination with brain tissue following stunning and slaughter in cattle and sheep. Abstract 5rd International Congress on Veterinary Virology, Switzerland Sept, 4-7.

Conference Proceedings:

Agbeniga, B., & Webb, E. C. (2014). Influence of electrical stimulation on carcass and meat quality of Kosher and conventionally slaughtered cattle. Amies, France, 23-26 Oct 1989. pp: 199-231.

Thesis / Dissertation:

Rahmaningtyas, I. H. (2018). Antibacterial Activity of Soursop (*Annona muricata L.*) Leaf Chloroform Extract on The Growth of *Pseudomonas aeruginosa* In Vitro. [Thesis]. Faculty of Veterinary Medicine. Universitas Airlangga. pp: 87.

Example format:

Table 1. Blood glucose and cholesterol level in albino rats after treatment

Treatment	Blood glucose (Mean ± SD)	Cholesterol (Mean ± SD)
K+	1.22a ± 0.00	1.22a ± 0.00
K-	1.42b ± 0.12	1.42b ± 0.12
P1	1.21a ± 1.10	1.21a ± 1.10
P2	1.20a ± 0.20	1.20a ± 0.20

a,b Different superscripts in the same column showed significant differences ($p < 0.05$).

Example format:

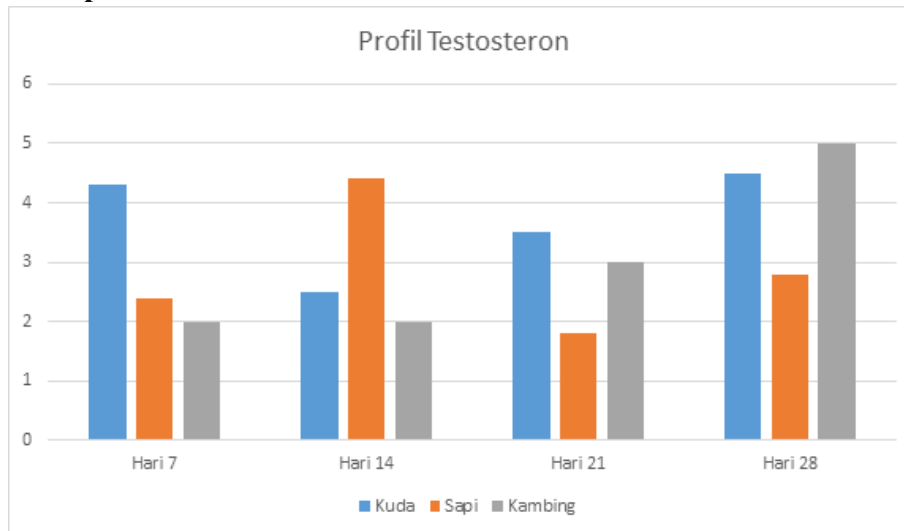


Figure 1. Profile of horse, cow and goat testosterone per week.

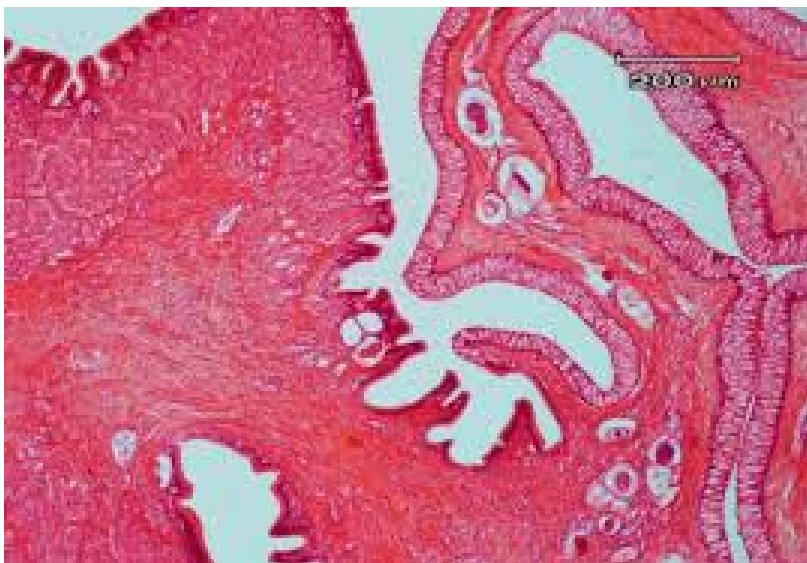


Figure 2. Histology of catfish duodenum with villous erosion.