

Casting Chromebooks to Classroom Projectors - Norris

<https://bit.ly/NorrisCast>

Updated: 9-27-23 Erskine/Gault

Three ways to cast in your classroom:

[1 - Casting using a Google TV with Cast moderator - **Easiest and recommended way!**](#) (Contact us to get one!)

[2 - Casting Chromebooks using Google Meet](#)

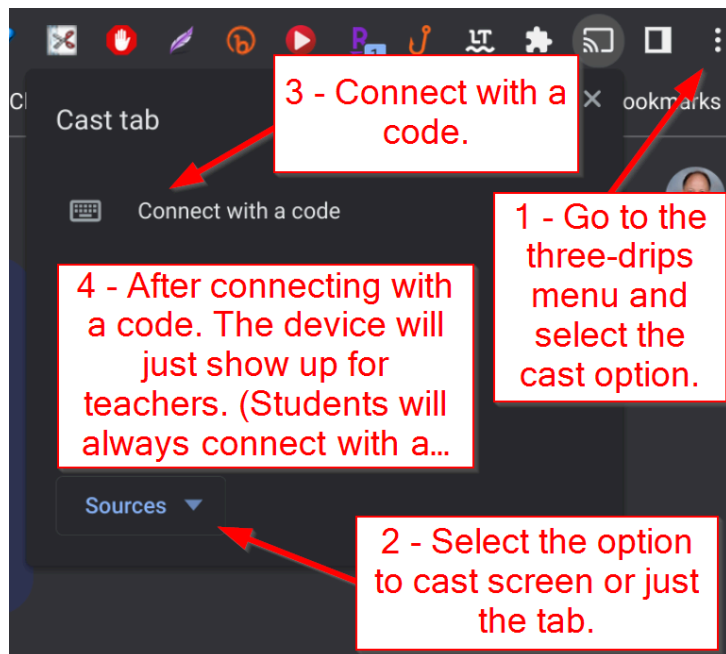
[3 - Use the Broadcast website. \(But the free version limits you to 30 minutes a day.\)](#)

1 - Casting using a Google TV with Cast Moderator - Easiest way!

You must have a Google TV device all set up with cast moderator obtained from the Norris Tech department. Any teacher can get one, so **let us know if you need one** in your classroom! This device will be hooked to your projector via an HDMI input.

[Teacher Overview video.](#)

As a teacher, you will connect to the device the first time using the code method. After the first time, the devices that you have connected to with a code will show up automatically. (Assuming the Google TV is plugged in and on the network.) It will only hold the code for teachers for 12 months, so after a year you may have to join with the code.



Note: Remembered Cast devices for teachers are a part of their local Chrome profile on the Chromebook. You can remove the profile on the Chromebook to reset the remembered cast devices.

In case your remote loses connectivity to the Google TV device, follow these steps:

How to re-pair a Google TV remote that won't connect

When the Chromecast is powered on, it typically pairs with the remote without hassle, but that is not always the case. The remote and the Chromecast communicate with each other via Bluetooth. If your Chromecast can't find the remote, your TV will play a chime. This chime is an indication that the Chromecast and Voice Remote are not able to be paired. Another important thing to do is to ensure that batteries are installed properly or are not dead.

If your remote is not paired with your Chromecast and is not responsive, you have to manually put the Chromecast in pairing mode via the Chromecast device. Here's how.

Step 1: Press the button on the back of the Chromecast, and it will open up the pairing mode on the device, which will notify you via your TV screen.

Step 2: Next, on the remote, press and hold the *Back + Home* buttons simultaneously, not letting go until you see the LED light at the bottom of the remote pulsating.



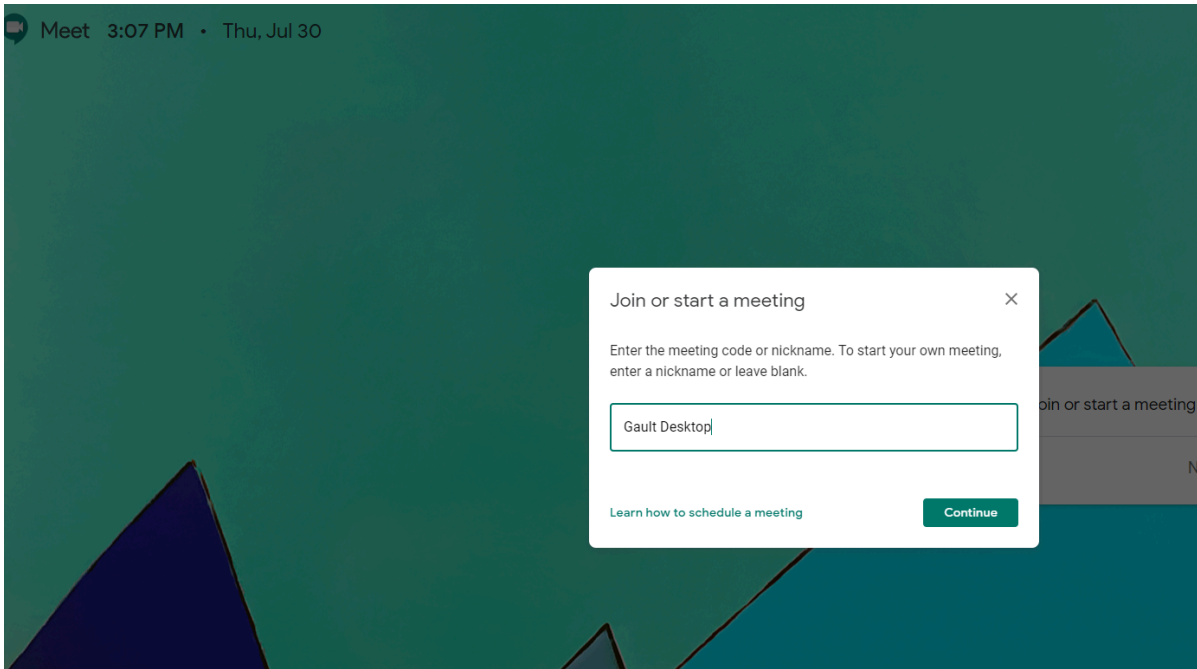
2 - Casting Chromebooks using Google Meet

Want to project your Chromebook wirelessly. Use Google Meet. In addition, students can easily share their screen with you as the teacher.

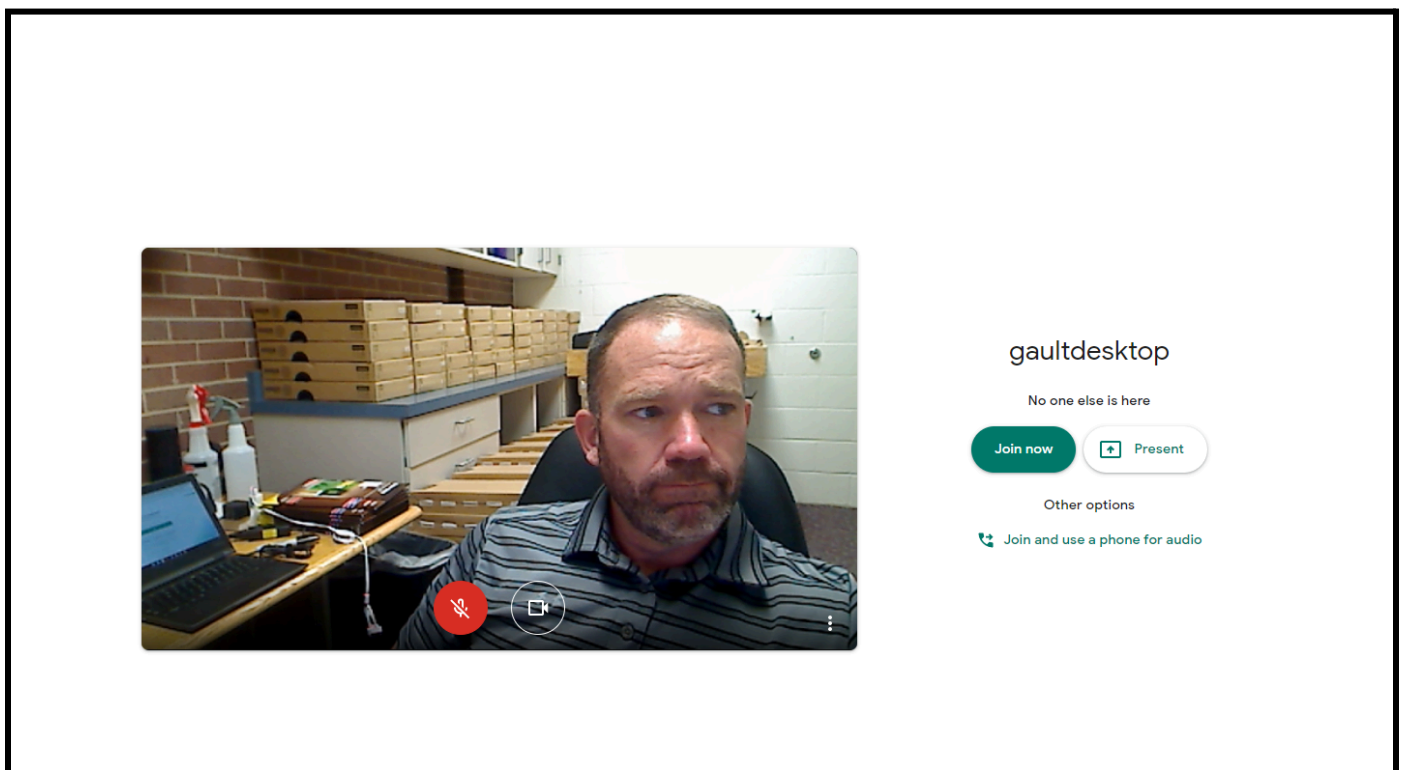
In order to initiate this process, you will need to create a Google Meet Videoconference. This can be done by going to meet.google.com, scheduling a meeting in Gmail, or using your Google Classroom Meet link. This process needs to be initiated from your desktop computer (which is connected to your projector).

Initiate from meet.google.com

ON YOUR DESKTOP: Create a session and Enter a nickname - click continue



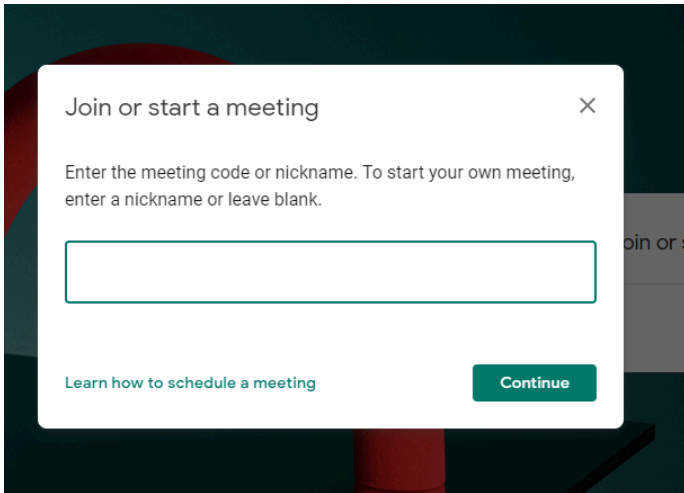
Click on the “join now” button



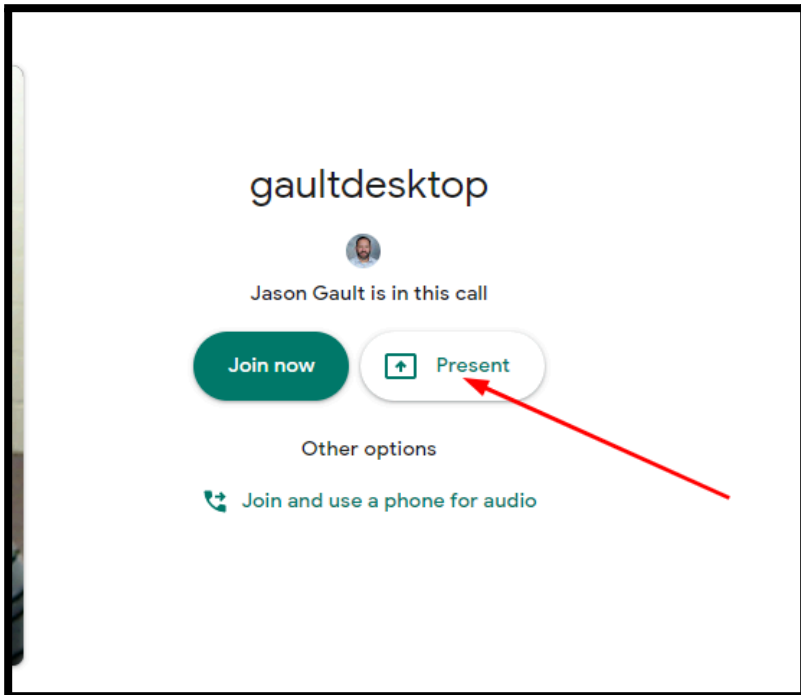
ON YOUR CHROMEBOOK:

Go to meet.google.com and click on “Join or start a meeting”

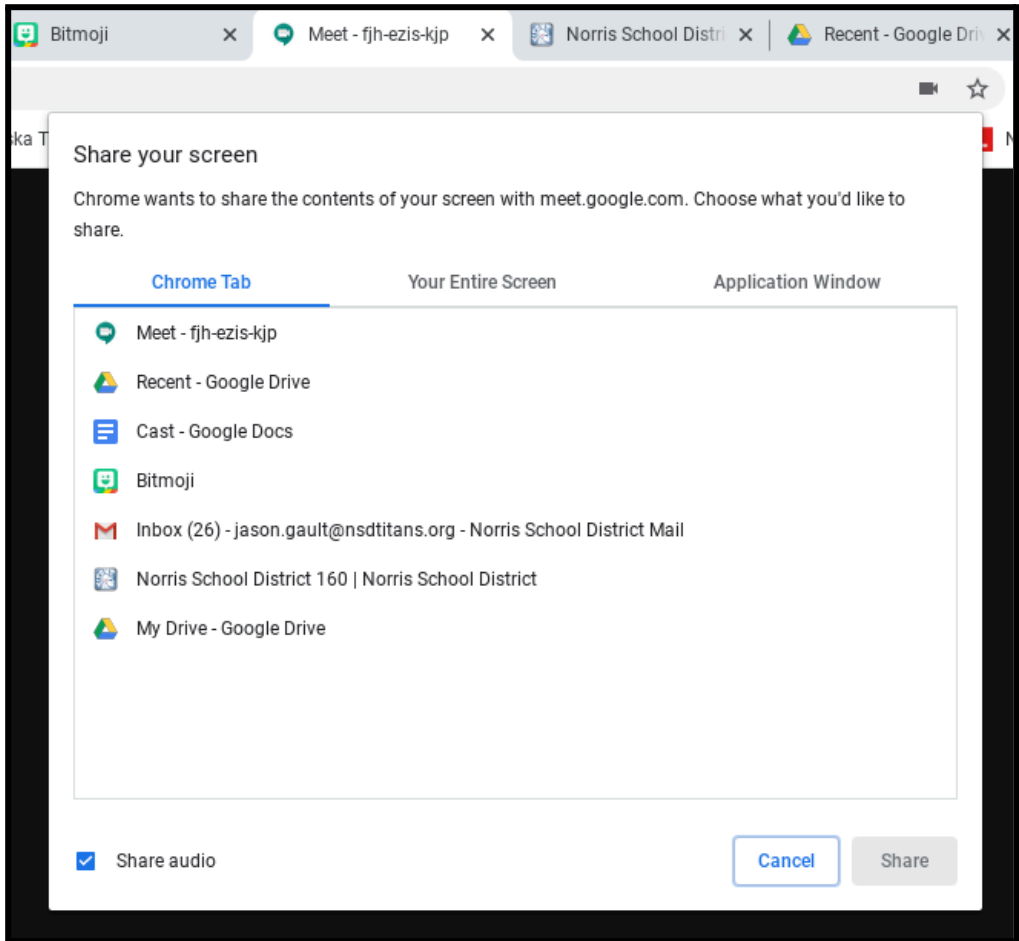
Type in the nickname of your session ex. Gaultdesktop



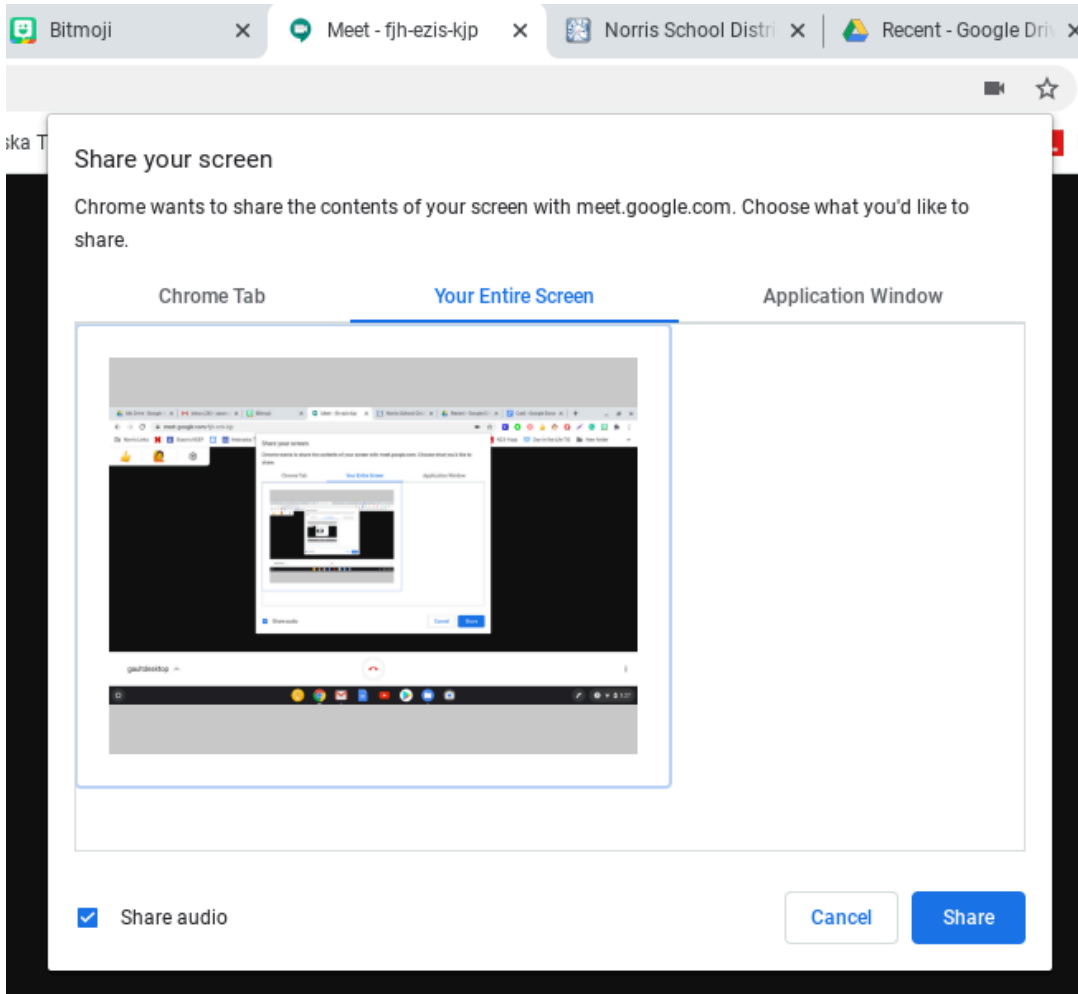
Click on "Present"



Chose the middle tab "Your Entire Screen"

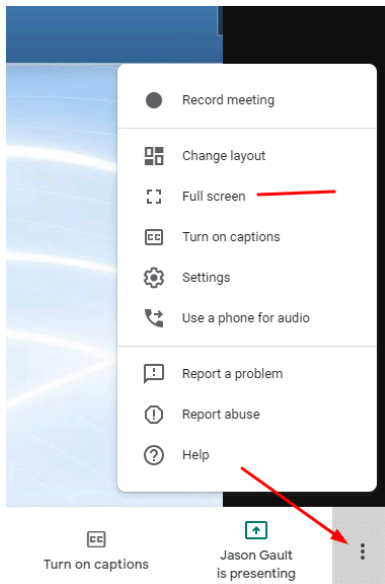


Click on the little screen shot, then click "SHARE"



Your desktop should now be mirroring what is on your Chromebook. But your screen will be showing two chrome menu bars. So let's go full screen on your desktop.

One the bottom right of your **DESKTOP**, click on the 3 drips and choose Full Screen



Now everything on your Chromebook should be showing up on your desktop which is connected to your projector and projecting. In order for students to present their screens, they would just need to go to meet.google.com, type in the nickname of your session, and choose "Present."

You can also initiate a Meet session from Google Classroom. Then you and your students could simply log into Google Classroom and initiate the same process as above to cast the teacher/student Chromebook to your desktop. Note: You will not need to set a nickname, and after you initially set up Meet in Classroom, it will just give you a hyperlink directly to the session. So, a little less work to accomplish the same as above.

3 - Use the Broadcast website. (But the free version limits you to 30 minutes a day.)

Using [Broadcast](#), you can easily share your screen to a class of students. They just go to the website and enter in your session code to see your screen. The free version limits you to 40 viewers at a time and 30 minutes a day of use. (After signing up, the first 14 days are unlimited broadcasting.) Very easy to use! [Short how-to video here.](#)

They have a [broadcast extension](#) for drawing/annotating on the screen on the screen. ([More info on it here.](#)) (There are probably better ones for this, like [Web Paint for Google Chrome](#) and a few others found in our [whiteboard tools doc](#), but this one does integrate with Broadcast, so there may be a few features you like.)