

Yamaguchi-Gumi

Founding father



Shimizu Jirocho

The Yamaguchi-Gumi operates out of Kobe Japan, they moved a handful of members to New York to expand their network. The purpose of moving members to New York is to create workflow and better options for expendable members that have shown courage and motivation to the traditional ways. Their mission in New York is to make money and pull in the Americans with Japanese ethnicity to their traditional roots of the old ways.



The Yamaguchi-gumi is the sixth but also largest yakuza organization. It is named after its founder Harukichi Yamaguchi. Its origins can be traced back to a loose labor union for dockworkers in Kobe before World War II.

The Yamaguchi-gumi are among the world's wealthiest gangsters, bringing in billions of dollars a year from extortion to gambling and so on.

The Yamaguchi-gumi's founding location is in Kobe Japan but the organization has territory all over Japan including Tokyo and Nagoya.

Being Part of the Yamaguchi-Gumi is an honorable position to be in, when you get put in you are seen as a family member that goes deeper than blood. The Yamaguchi-Gumi have each other's back, greed and selfishness is looked down upon. When you take the oath to become Yamaguchi you take a sacred oath to protect those around you including the average working man.



The Yamaguchi-gumi during its reign in the 1980s

The Rules of Yakuza:

1. Treat your ‘oyabun’ with respect:

In yakuza gangs, there’s a structure called “oyabun-kobun” that you’d be foolish to disobey. Oyabun refers to the “father” and kobun to his loyal “son”. Similar to the structure of Chinese triads, this system requires the kobun to do everything that their oyabun tells them to – disobedience may have dire consequences. In fact in many gangs, the only way for a yakuza son to gain redemption for such an act is for him to amputate part of his little finger as punishment. Often he’ll send his dismembered pinky to his oyabun as a sign of his penitence and loyalty

2. Don’t steal from the everyday man:

The romanticized vision of the yakuza paints them as *Robin Hood*-like figures, stealing from the rich and giving to the poor; committing white-collar crimes while helping everyday people when they’re in need. As a result, petty crimes aren’t a priority for the yakuza. Unlike gangs operating abroad, the yakuza are an officially recognised group in Japan, and being a member isn’t against the law. So, for the most part, they can operate without interference from the local police force, focussing their energies on more lucrative crimes that don’t affect innocent and unassuming members of the public.

3. Don’t disrupt the harmony of the gang or touch the partner of a fellow member

Being in the yakuza is like being part of a brotherhood. Once you don the hallmarks of a Japanese gangster – tattoos from head-to-toe and a half pinky – it’s a ride or die situation. In-fighting is strictly forbidden and you’re more likely to find one member sacrificing themselves to save the skin of a more senior member. But despite their so-called chivalrous ways, women seem to be regularly objectified by members of the group – it’s not permitted for one brother to even touch the wife or girlfriend of another.

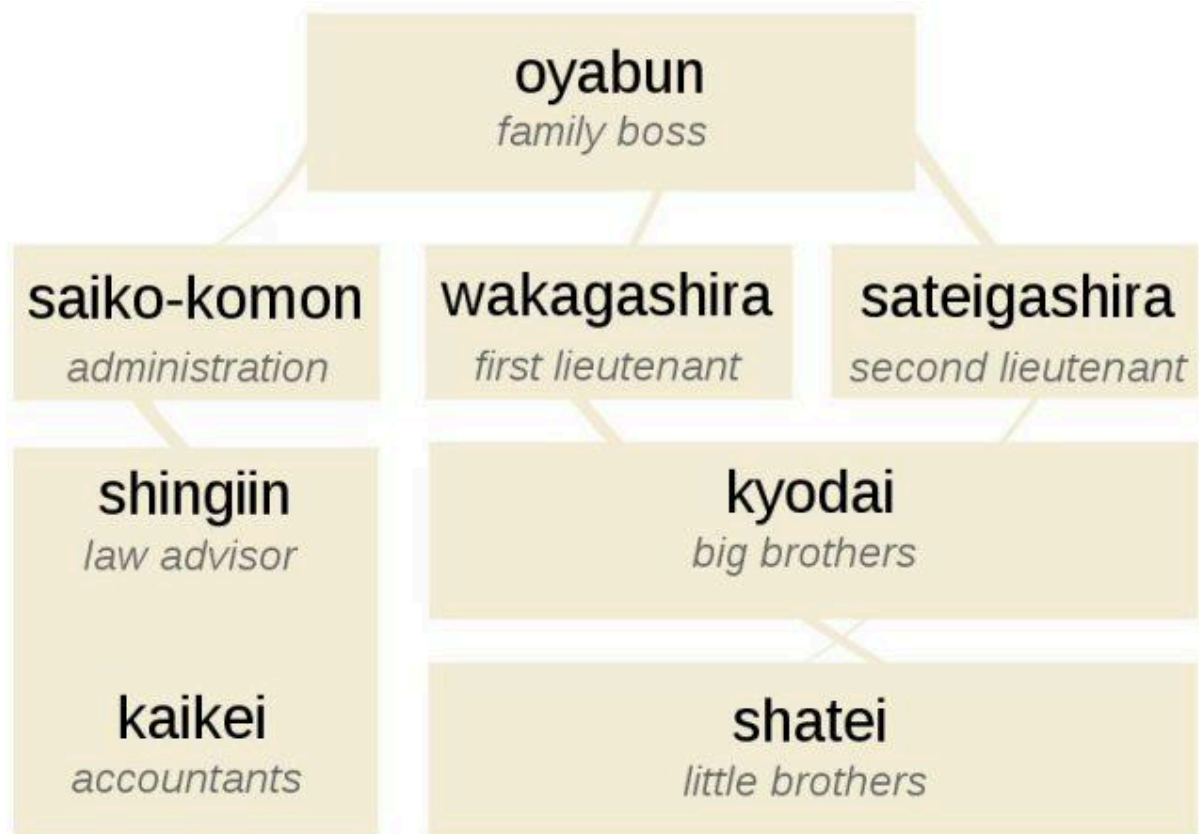
the origin of the Japanese Yakuza:

The Yakuza was founded in Japan, the territory with most Yakuza members is the “Kyushi Island.” The organization was founded by “Shimizu Jirocho” in the mid of 1603. The organization participates in honest business and steer away from drugs. It follows traditional Japanese culture, the group is composed of misfits and delinquents who had joined or formed the groups to extort customers in local markets by selling fake or shoddy goods. The organization “Yamaguchi-Gumi”

The Structure of Yamaguchi-gumi

The structure is adopted by the traditional Japanese hierarchical structure of oyabun-kobun which is a foster parent and is formed as a family. The members are known as younger brothers, older brothers and so on. The Yamaguchi-Gumi is not like the western mafia that you see in America, it is split up in branches and seen as a corporation. In the Yamaguchi-Gumi it is allowed to split up from the family and create your own “branch” which allows the Yamaguchi-Gumi to operate with a lot of members. The size of Yamaguchi-Gumi is much larger than the western mafia where there may be a few hundred members. The Yamaguchi-Gumi’s number is much greater.

The Structure of the Yamaguchi-Gumi and its branches.



note: not literal translations

The official emblem of the Yamaguchi-Gumi that is worn by the members as a pin.

