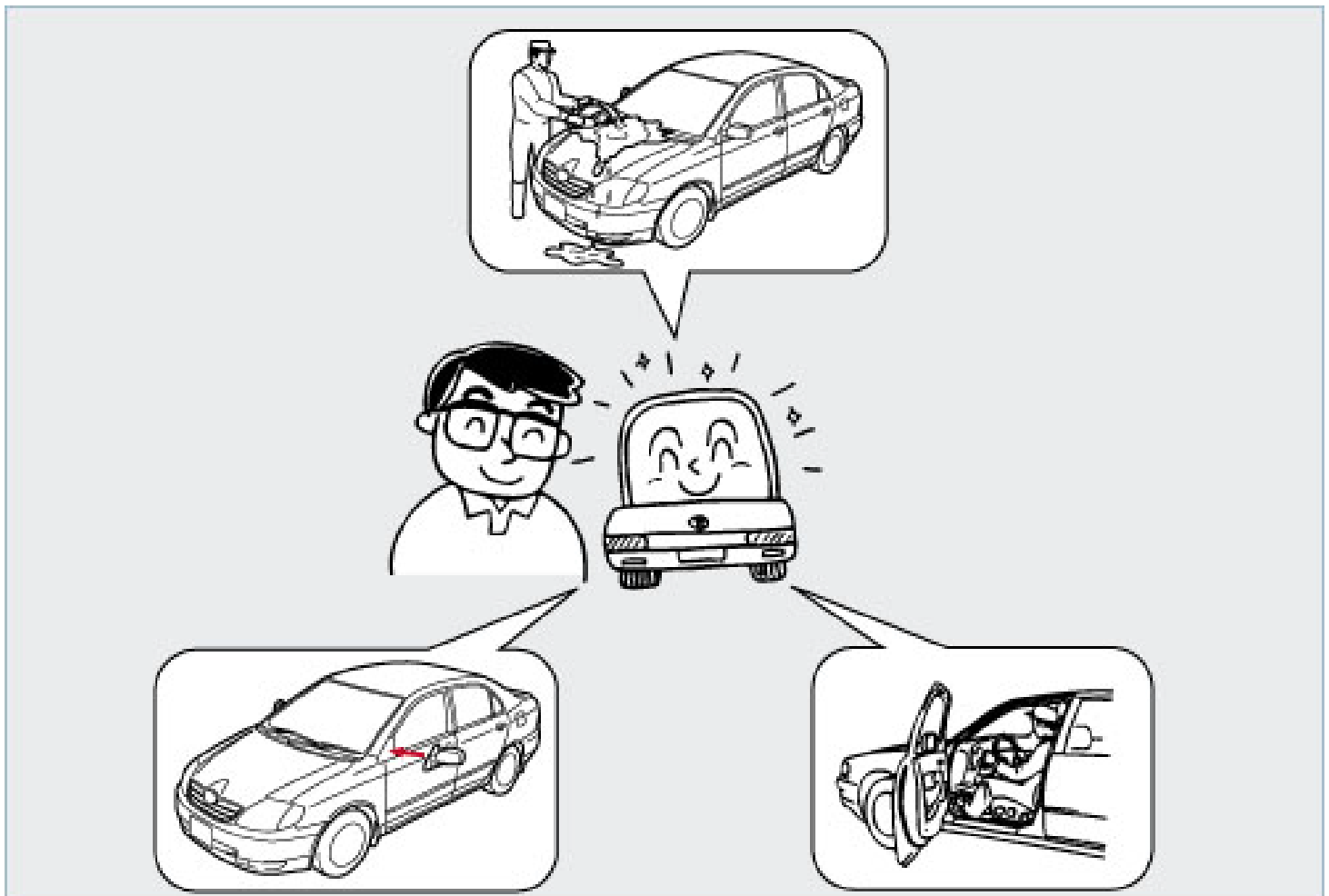


70.Pre-Delivery Service

PDS (Pre- Delivery Service) is performed by the dealer before a new vehicle is delivered to the customer in order to ensure that it is in optimal condition, and that the customer can operate it immediately upon taking delivery.

PDS consists of the following three operations:

- 1.Verifying the condition of the vehicle.
- 2.Restoring the vehicle to operating condition.
- 3.Inspecting the functions of the vehicle.

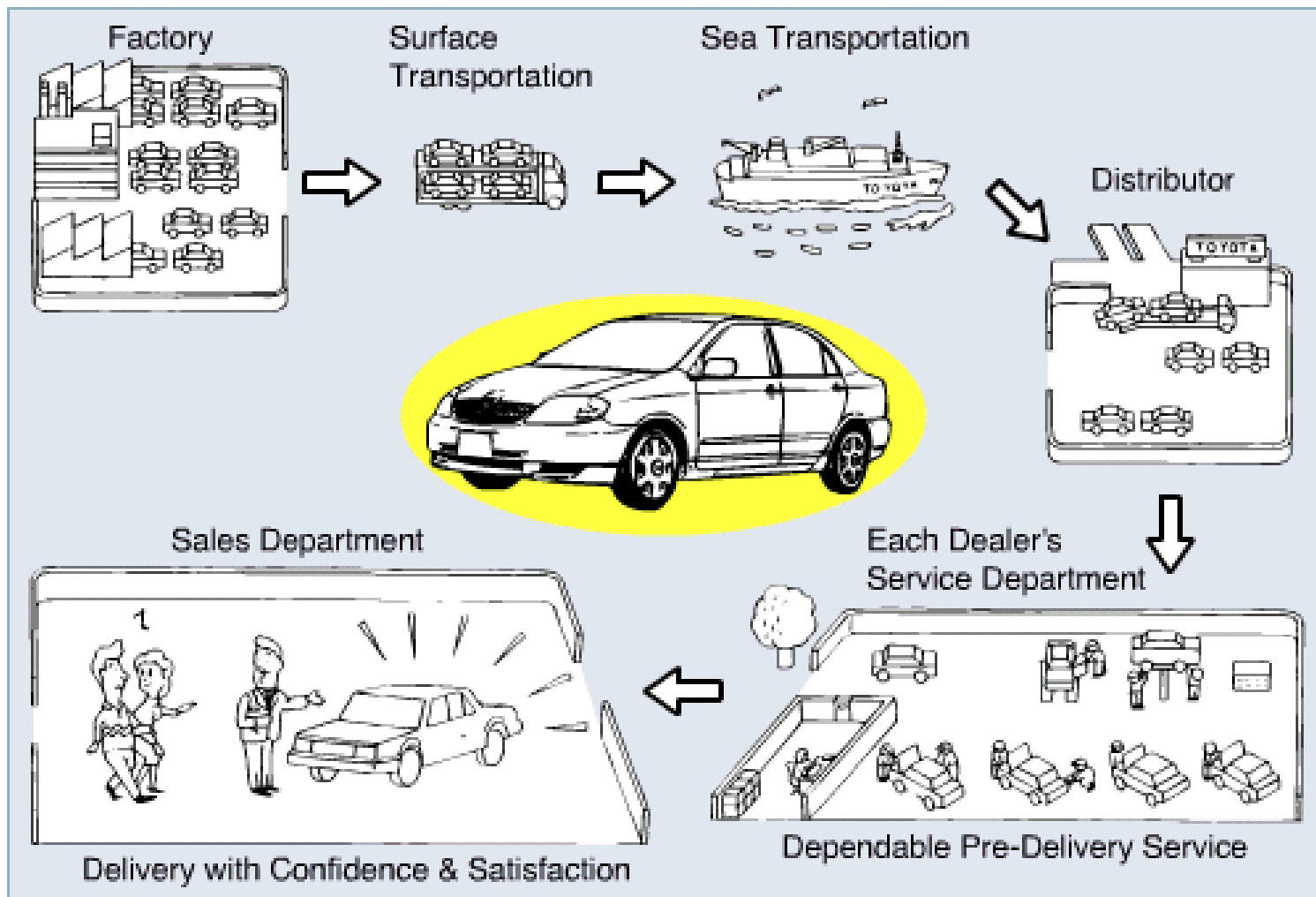


PDS: The dealer performs the inspection.

PDI (Pre- Delivery Inspection): The distributor performs the new car quality inspection.

Verifying the Conditions of the Vehicle

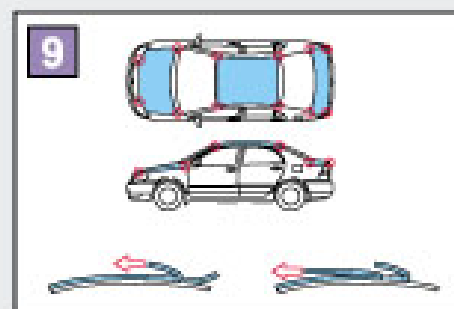
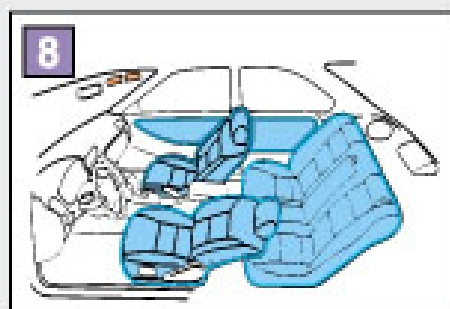
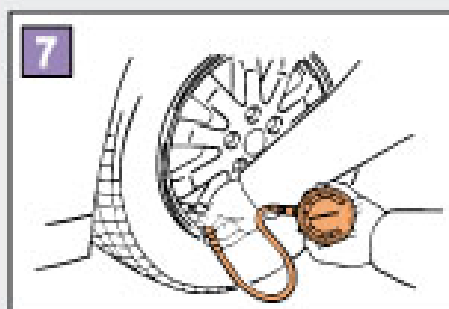
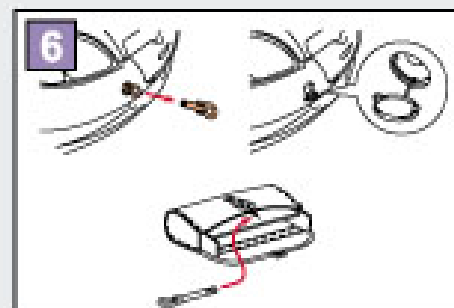
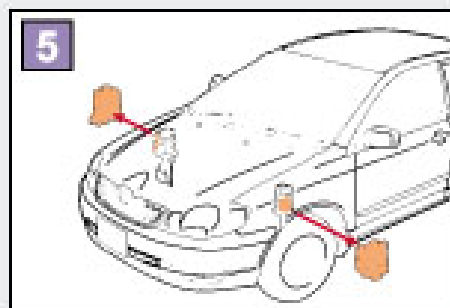
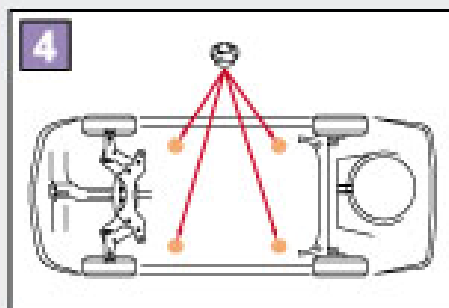
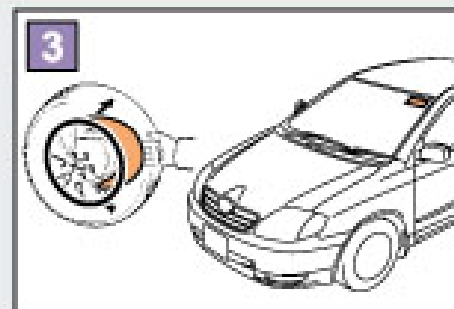
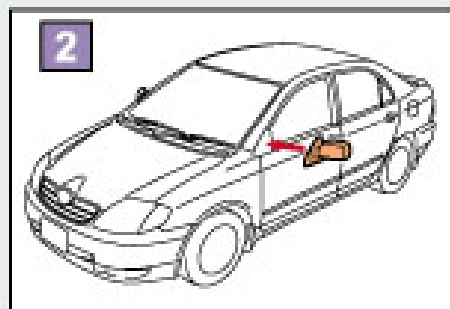
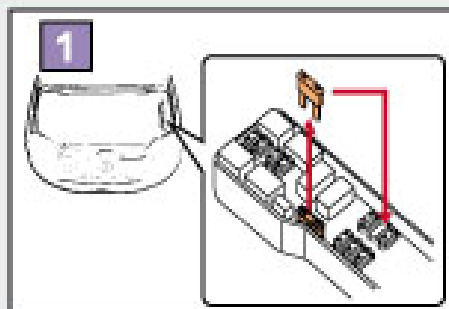
Final inspection is completed by the manufacturer before a new vehicle is transported to the customer. Various problems may occur during transport, such as physical damage. For this reason, it is necessary to verify that the vehicle is free of problems when the vehicle arrives at the dealer.



Restoring the Vehicle

To prevent problems during transport, various protective measures are taken with the vehicle before it leaves the factory. Therefore, the vehicle must be restored to operating condition during a PDS. If the vehicle cannot be restored to operating condition, the vehicle might not be able to function properly, or the unrestored portion could lead to an unforeseen accident.

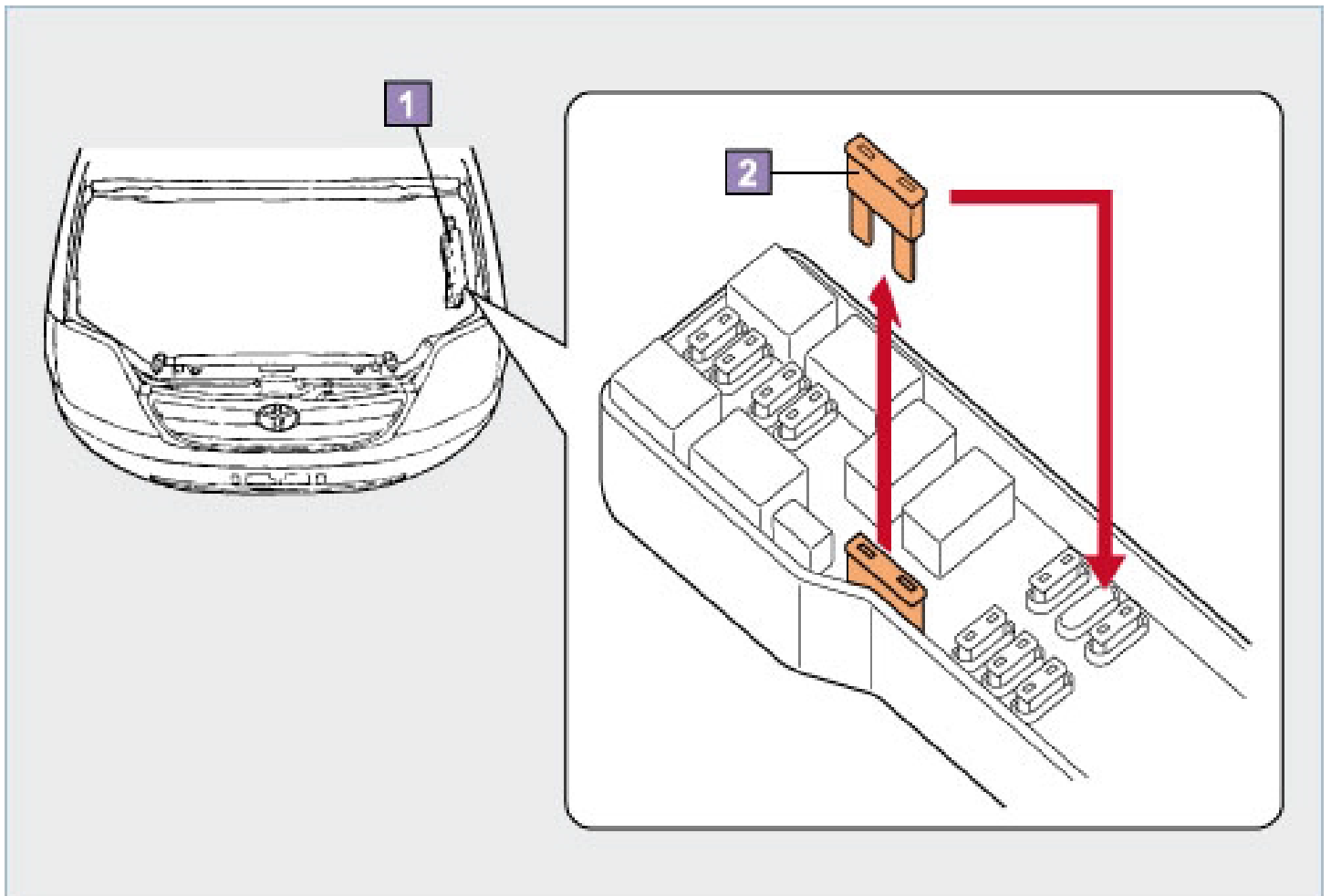
1. Installing of fuses and short pins
2. Installing of factory- loaded parts
3. Removing rust- preventive covers from brake discs
4. Installing rubber body plugs
5. Removing front spring spacers
6. Removing emergency towing eyelets
7. Adjusting tire air pressure
8. Removing unnecessary labels, tags, stickers, etc.
9. Removing body protective film



Installing of fuses and short pins

Before starting the inspection, install the dome light fuse, radio fuse, or short pins.

These parts are removed at the factory to prevent the current from flowing during transport or storage. The removed fuses are attached to the inside of the cover of the respective relay block, which is located in the engine compartment. The positions of the removed fuses vary by model.



Installing factory-loaded parts

The factory-loaded parts are packaged individually to prevent damage during transport.

Install the wheel caps after retightening the hub nuts of the wheels.

For example

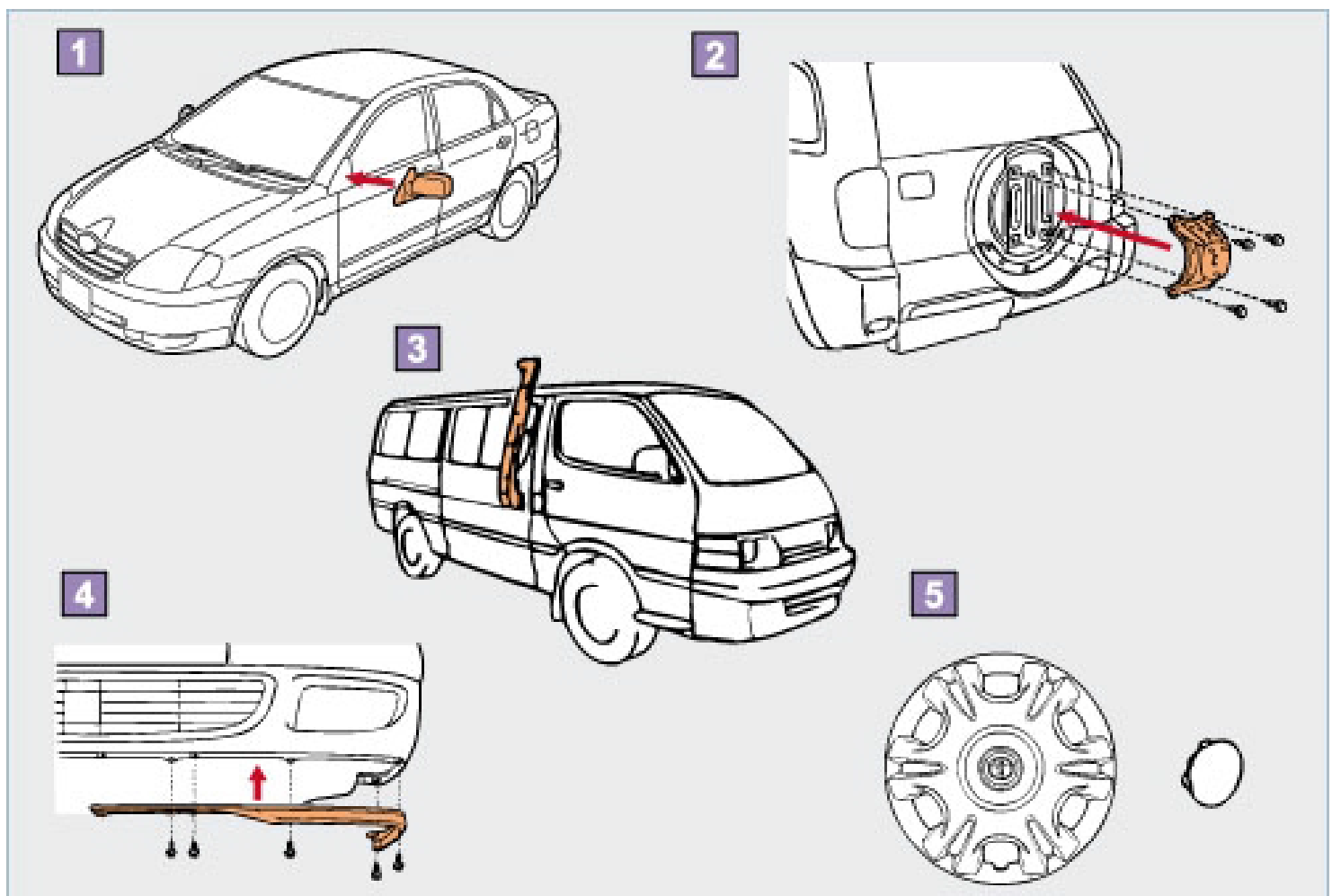
Outside rear view mirrors

Spare wheel carrier bracket

Snorkel

Front spoiler

Wheel caps and covers

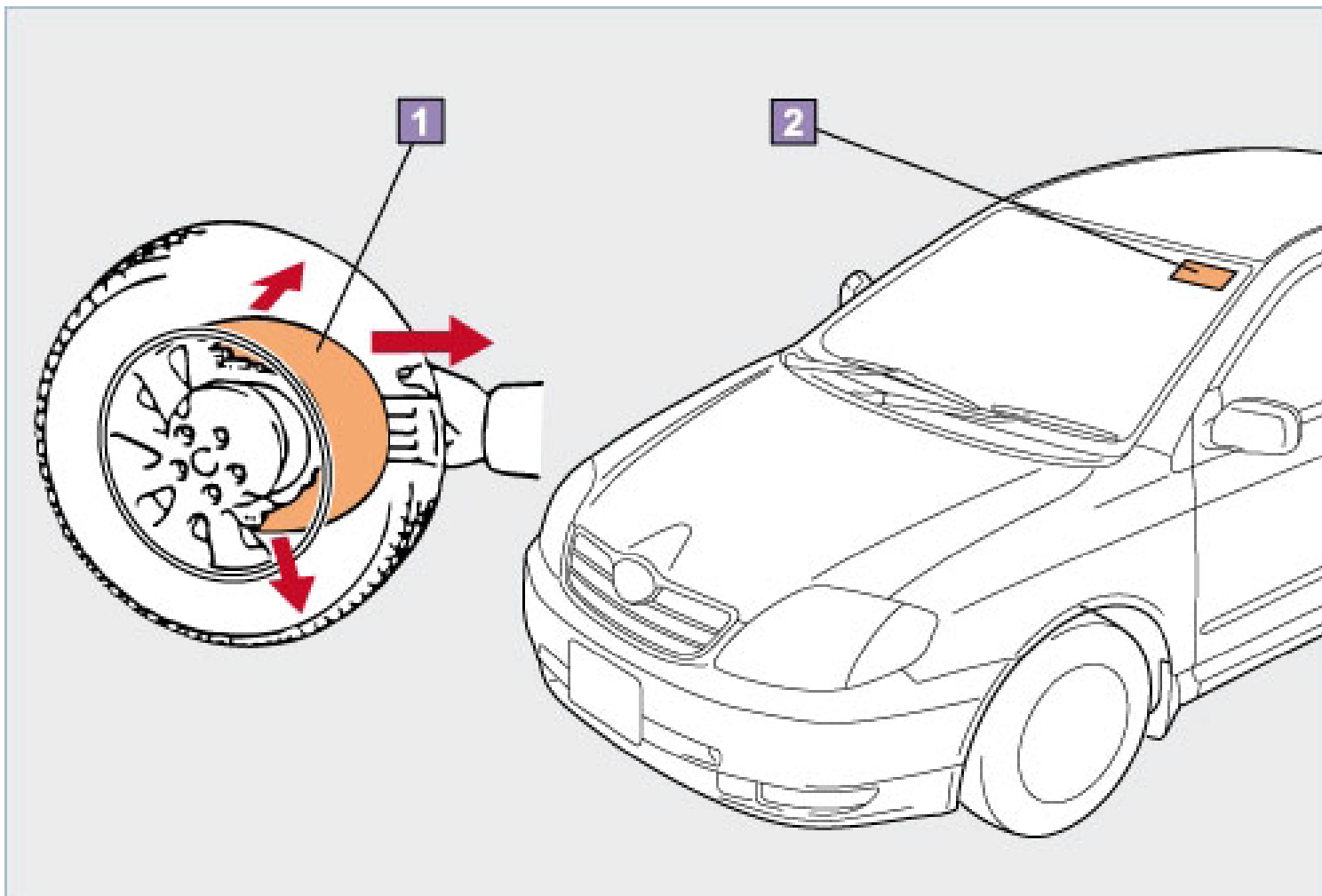


Removing rust-preventive covers from brake discs

Remove the rust-preventive covers that are attached to the disc brakes. If rust-preventive covers are attached to the brakes, there will be a warning label affixed to the front windshield. A vehicle equipped with 4-wheel disc brakes has the covers on all 4 wheels. Do not apply the brakes excessively while transporting vehicle with covers. When removing the covers, make sure to use your hands. You could damage the wheel or the brake rotor if you use a screwdriver or other tool.

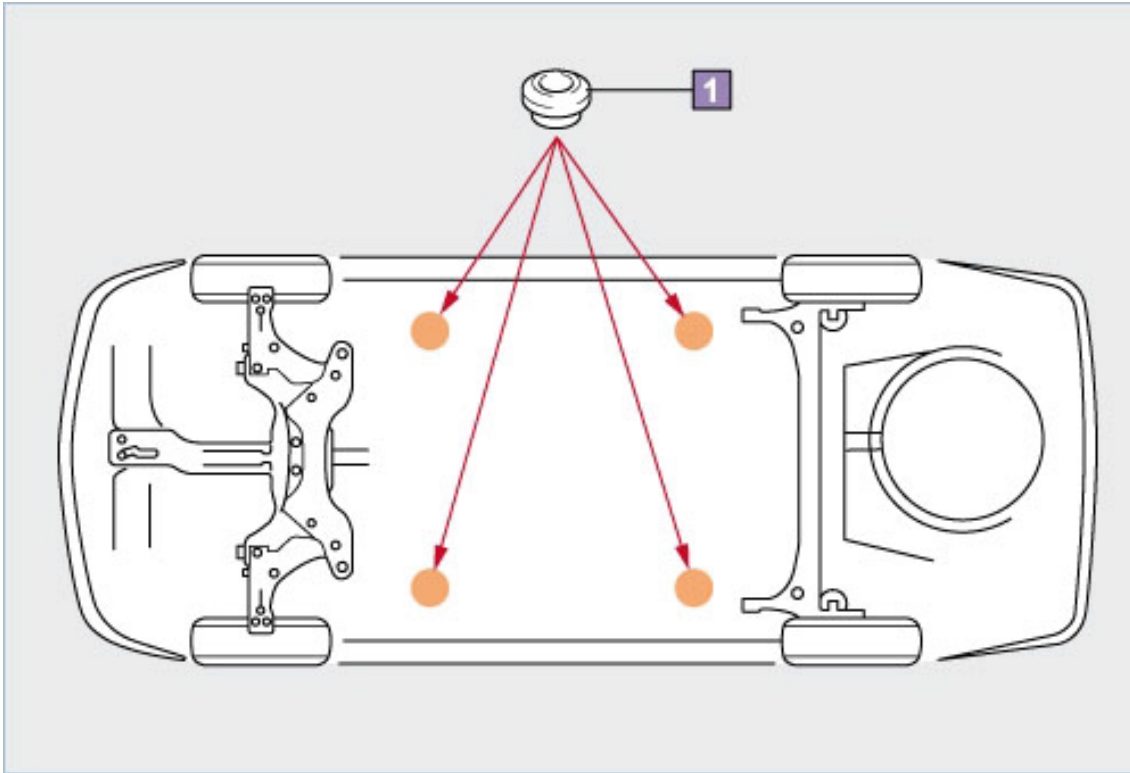
1. Rust-preventive cover

2.Warning label



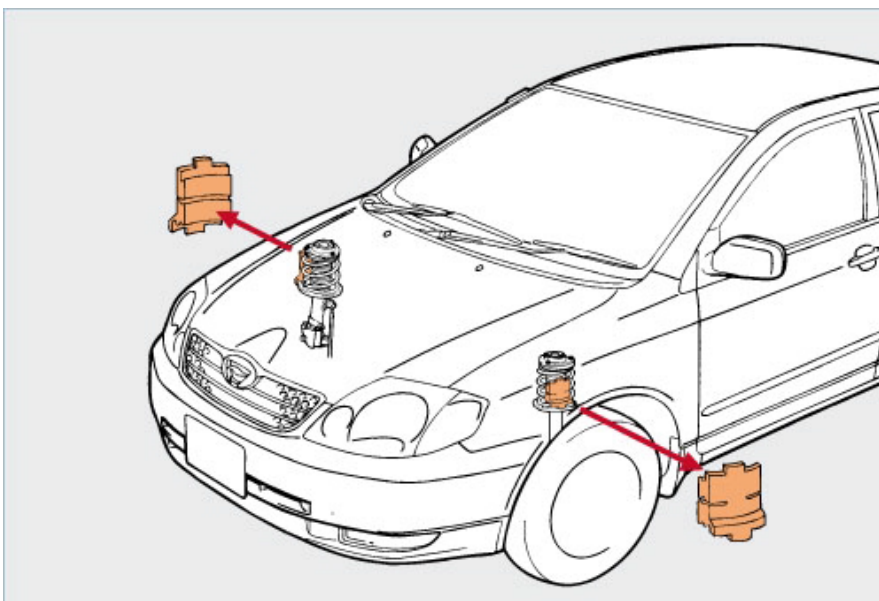
Installing rubber body plugs

Install the rubber body plugs into the torque box holes. The rubber body plugs are located in the glove box.



Removing front spring spacers

Remove the front spring spacers from the front suspension coil springs. Perform this operation only on spacer-equipped vehicles. Raise the vehicle on a jack or an auto lift to remove the spacers.



Removing emergency towing eyelets

Remove the emergency towing eyelet from the front bumper.

Install the covers over the holes of the emergency towing eyelets.

The covers for the emergency towing eyelet holes are located in the glove compartment.

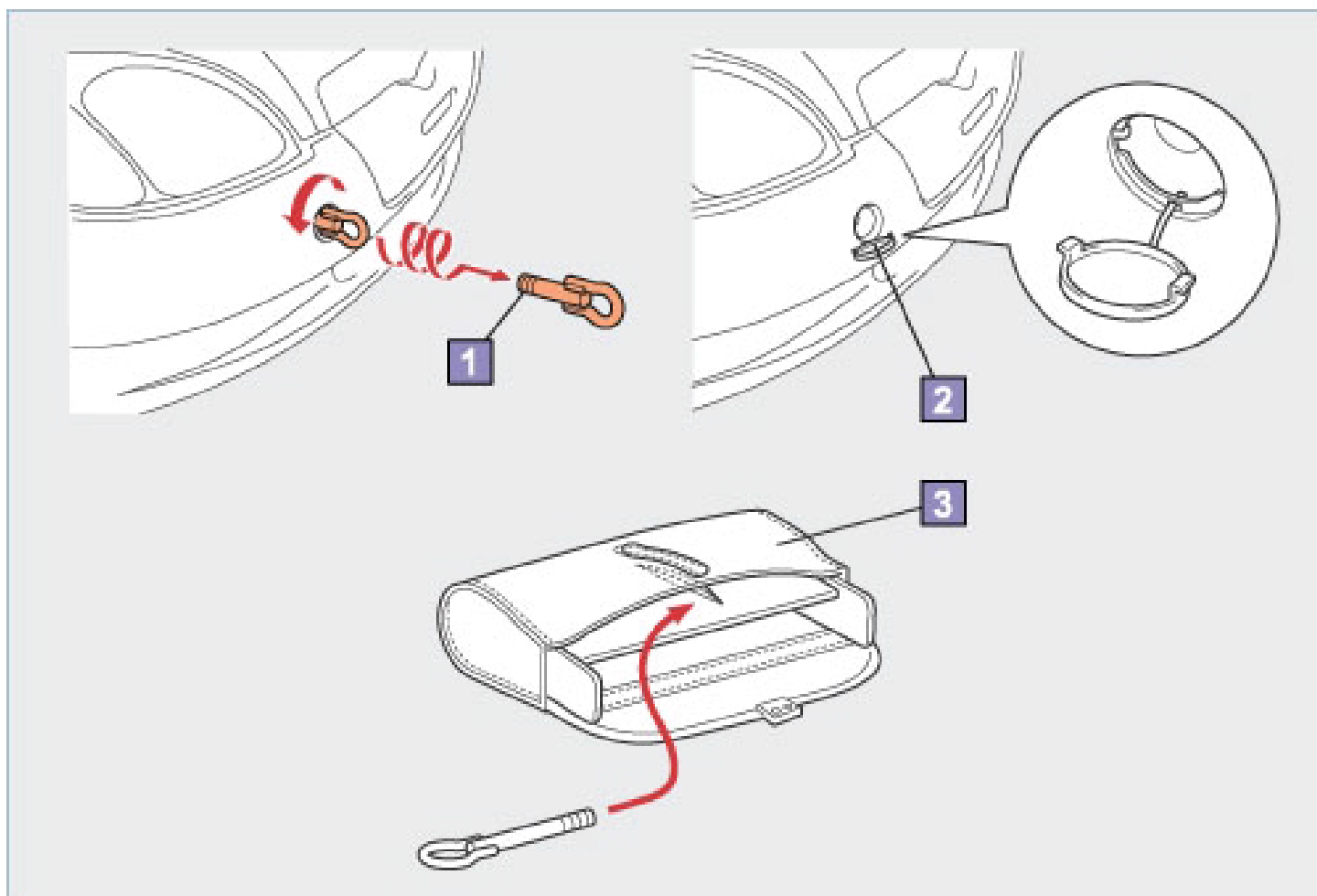
Place the removed emergency towing eyelet in the tool bag.

Perform this operation only on vehicles equipped with towing eyelets.

1. Emergency towing eyelet

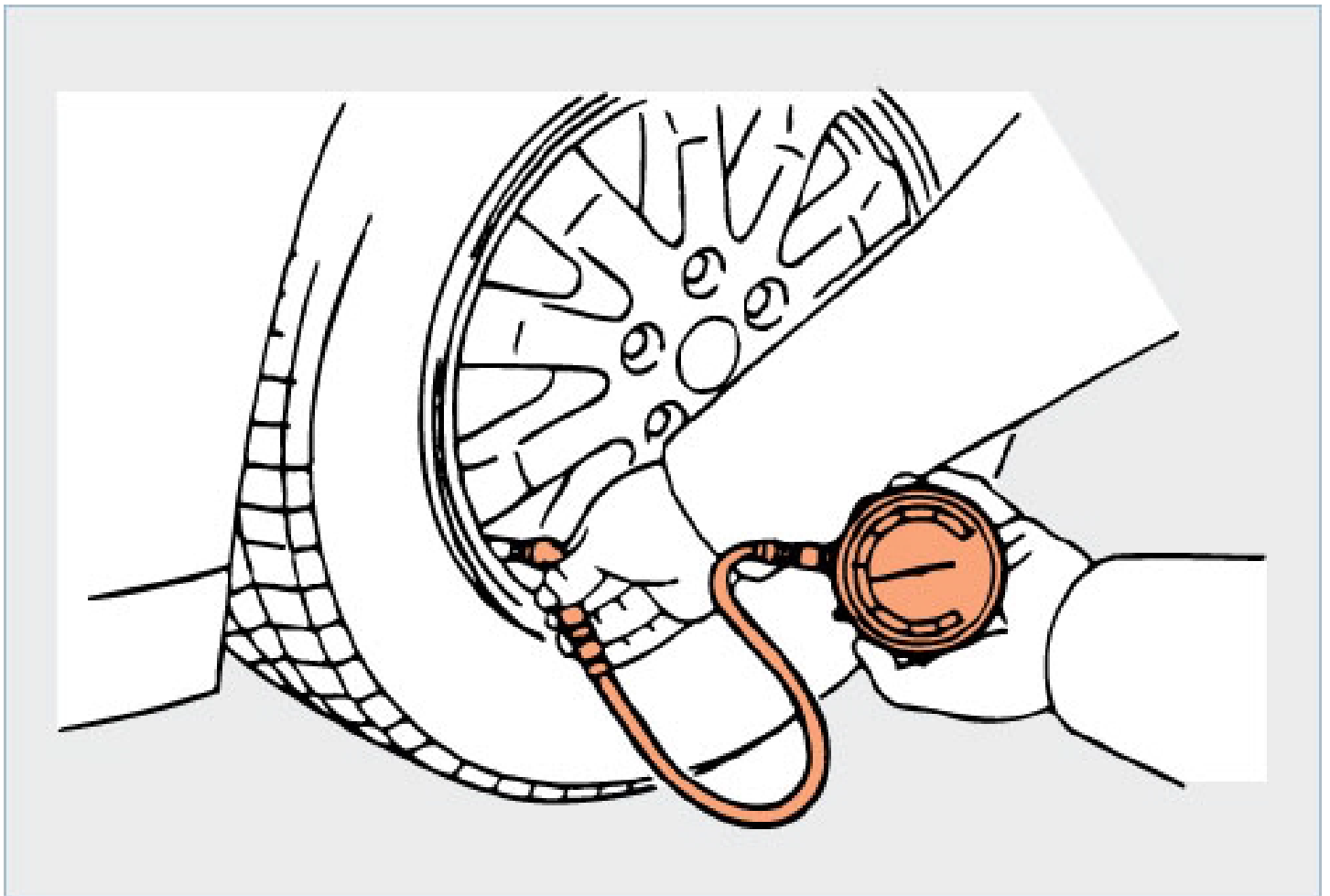
2. Emergency towing eyelet hole cover

3. Tool bag



Adjusting tyre air pressure

Adjust the tires to the appropriate air pressure. The tires are inflated at the factory to a pressure that is higher than normal, to prevent deformation during transport. At this pressure, the ride will be uncomfortable and the tires could wear unevenly. Also adjust the spare tire to the appropriate air pressure.

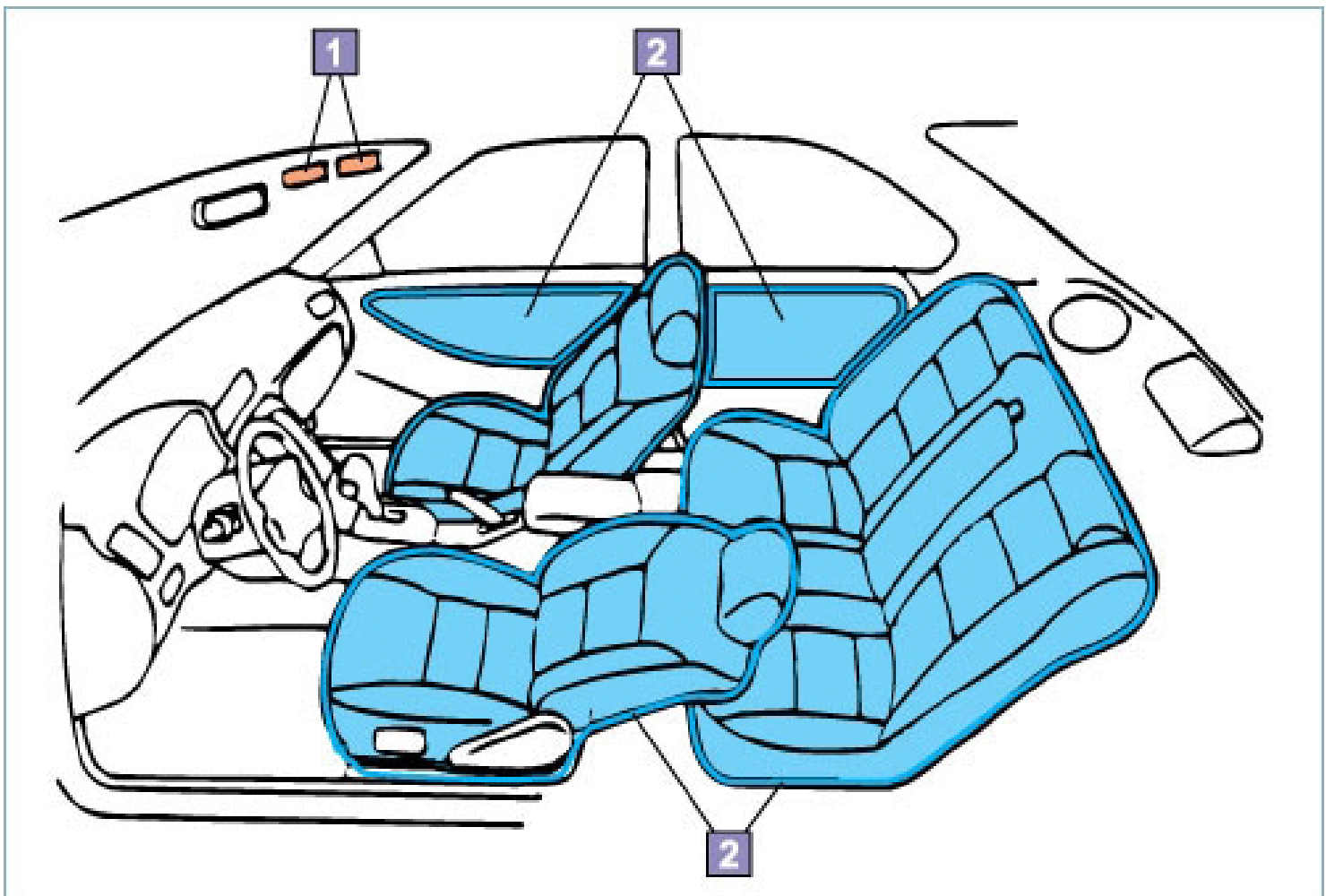


Removing unnecessary labels, tags, stickers and covers

Remove the protective covers just before delivering the vehicle to the customer. Do not use a sharp object such as a knife to remove the protective covers because it could damage the trims and the seats.

1.Labels

2.Protective covers



Removing body protective film

Removal procedure

1. Before peeling off the protective film, wash the vehicle to prevent the painted surface from being scratched with sand or dust that may have accumulated during transport.

2. Start peeling off the protective film from the corners (circled in red in the diagram on the left).

(1 Bend back the tip to a 180° and quickly pull off the film.

(2 Pull off the film quickly in a horizontal direction.

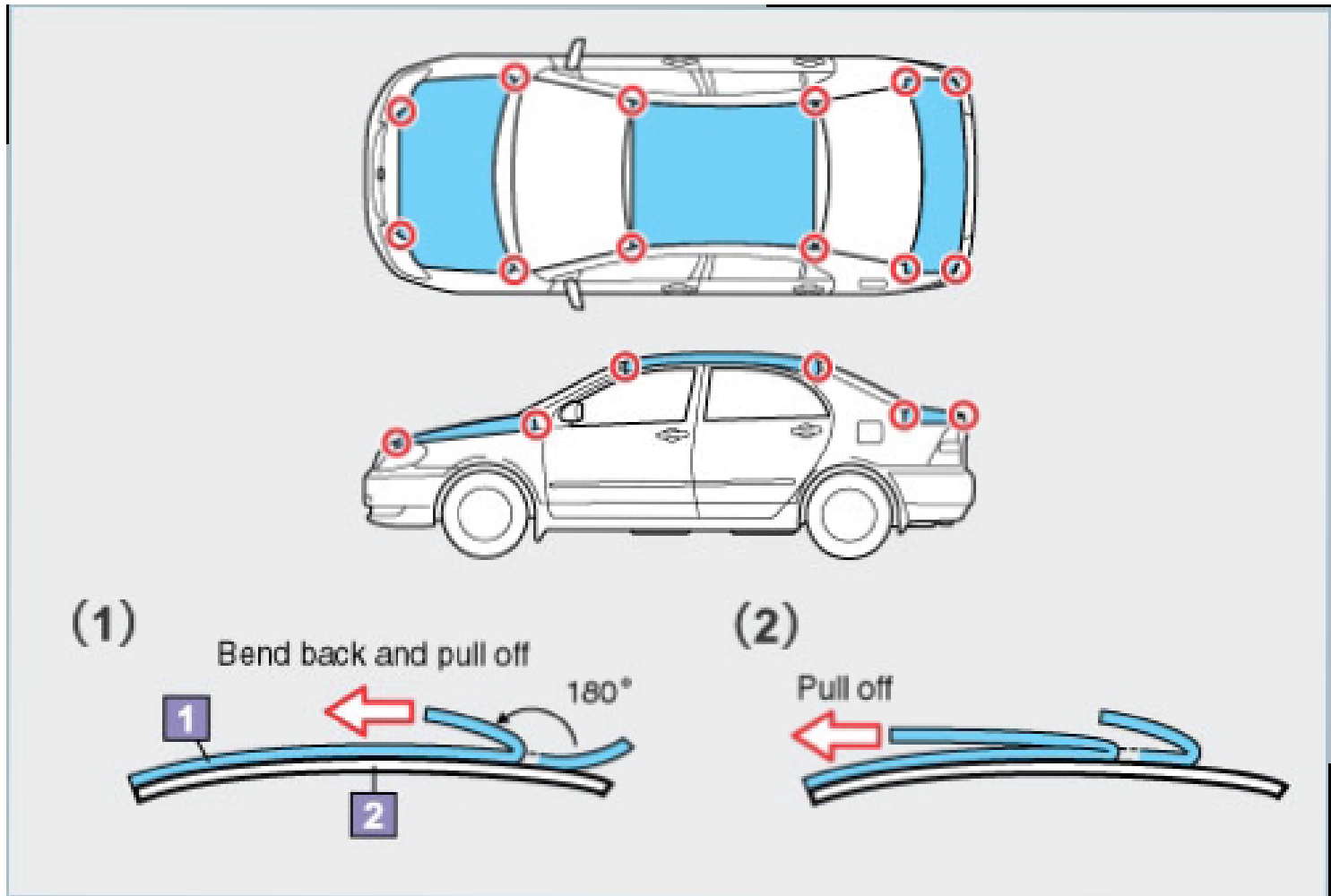
To prevent scratching the paint or denting the vehicle body, do not place your elbows or hands on the vehicle.

Use only your hands to peel off the protective film.

3. After removing the protective film, check the vehicle body for any adhesive residues or bulges on the paint surface.

1.Protective film

2.Body panel



Inspecting the Functions of the Vehicle

This inspection is performed to ensure that the components and the mechanisms function properly before the vehicle is delivered to the customer. This operation is indispensable for delivering the vehicle in a safely operable condition with which the customer can be satisfied.

