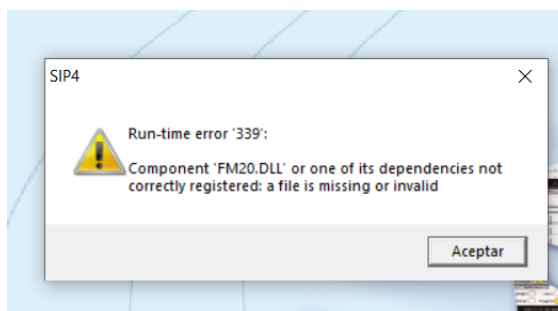


General SIPwin installation notes.

We update the versions periodically. These changes are sometimes not visible to the end user. We are used to also incorporating the recommendations and suggestions that users send us and that tend to take the form of consensus. Medical content is also reviewed and adapted to the new universal clinical consensus and new evidence from the literature..

If at the time of the update the SIP shows the following error please install the following program with windows compatibility by clicking [here](#)



Update Version 4.17a

5 August 2020

(Please read this information carefully)

This version of SIP windows solves the out-of-range value in date type variables as shown in the following image and it is a prerequisite to have installed the **SIP Windows** in any of its versions.4.16 or earlier.

remember **back up information** previously. If you experience difficulties, please contact the IT staff at your institution or thesip@paho.org

The information from the database with the medical records and the number of records is located as an example, as shown in the following image.



Once **endorsed** the information and made the **update** of version, **check** which maintained the location and number of records in the database.

To download the SIP windows update version 4.17 press [here](#)

Version 4.16 - update

update is NOT essential for the correct operation of SIP 4.16

June 15, 2020

- An update is made only for version 4.16. SIP version 4.16 previously installed **is a prerequisite mandatory** of this update. If you have any questions, consult the IT staff at your hospital or write to us atsip@paho.org

Version 4.16

March 12, 2018

- Adjustment in compilation and distribution.

Version 4.15

December 26, 2018

- Details in data entry (navigation and order of the fields) in the Near Miss SIP and in the Abortion SIP
- Total integration of the Neonatal form within the SIP
- Printing of the Near Miss story in SIP Argentina
- Adjustments in SIP field sizes
- Robson indicators from SIP Near Miss (was only enabled in SIP)
- Changes and improvements in the Advanced Backup program
- When there are problems accessing the database, a generic error message is displayed ("Database access error"), instead of the one that was output ("The database does not have the correct structure for the system or the chosen country") which was confusing.
- Correction of recording of the diastolic pressure and pulse fields in the first line of the Postpartum grid in SIP Near Miss

Version 4.14

April 9, 2018

Addition of the SIP NEO as a component within all SIP programs (Base, NM and the specific versions for each country). It is an integrated component to the versions.
Correction of printing of medical records (print the one that is seen at the moment).
Corrections in indicator calculations in SIP NM for MySQL databases.
Addition of the "Notes" variable in the SIP NM and all country-specific versions.
Correction in the selection of intervals in the selection by variables in SIP NM.
Updating of the tables of SIP institutions for several countries.
Addition of the variable groups for SIP NM.
Solution for loading ICD-10 diagnoses in SIP Abortion.
Changes in data conversion from SIP Abortion 1 to SIP Abortion 2.

Version 4.13

September 10, 2017

Data conversion from SIP to SIP NM.
Institutions Panama (updated).
Correction of date format (month/day/year) for Trinidad and Tobago.
Consistency controls in the "Lack of Information" program for SIP Abortion.
Incorporation of the filling manual for the SIP Abortion 2.
New advanced backup program for consolidations.
Possibility of anonymizing the data in the information backup.
Different wallpapers depending on the selected system.
Integrity in changes from version 4.11 to 4.12.
Integration with NEO programs for all versions.

Version 4.11

December 22, 2016

- Improvement in the calculation of the BMI Indicators.
- Near Miss story reverse print
- Linking the Zika module in Variable Description programs
- Linking the Zika module in Variable Distribution programs
- Creation and update of the table creation script for Mysql and SQL server.
- Incorporation of help for codes (Ctrl-F3) and update in the rest of the medical record forms.
- Update of the Near Miss forms.
- Update of indicators of Trinidad and Tobago.

Version 4.10

September 15, 2016

- Improvement in the calculation of the ROBSON Indicators.
- Possibility to choose the Mysql driver that you want to use.
- Creation and update of the table creation script for Mysql and SQL server.
- Choice of country at the time of starting the SIP after it is installed.
- Restriction of the name of the institution when selecting country, province, department.
- Correction in the number of the institution when selecting the option "suggest your number" from the configuration program.
- Improvement in the "Standardize null values" program.
- Improvement in the "Reduce the size of the active database" program.
- Improvement in the "Database Backup" program with selection by date.
- Forms for the new protocols: SIP Near Miss and SIP Aborto 2 (MUSA network)
- Zika virus data registration form.
- Update of the entire Access database to the current version of SIP.
- Custom data entry form for Trinidad and Tobago.
- Incorporation of the new lists of Bolivian institutions.
- Incorporation of the validation of the identity number for Bolivia.
- Incorporation of the new lists of institutions in Panama.
- Incorporation of the new list of Provinces of Cuba.
- Incorporation of help for codes (Ctrl-F3) in the SIP-NEO form and update in the rest of the medical record forms.
- Incorporation of the network manual in the "Administration Programs" option.
- Data entry form for SIP Abortion in Portuguese.
- Report of basic indicators of SIP Abortion in Portuguese.

Version 4.07

July 23, 2015

Improvement in the calculation of ROBSON Indicators (Beta 2 version).

July 13, 2015

Visual improvement of ROBSON Indicators (Beta version).

Elimination of sound when validating the identity document for Uruguay.

Configuration icon on the SIP main screen. It allows easier access to these programs.

Incorporation of the updated list of institutions for Bolivia.

June 24, 2015

Possibility to choose the default country at the start of the SIP (pais.txt file)

FIGO indicator reports for SIP and Abortion

New alerts in the entry of data in the HCP and date controls

New integrity controls in the programs of lack of information

New program on automatic gender indicators (COMISCA)

ROBSON indicators (under development - Beta version)

Identity number verifier when selecting country Uruguay

New Indicators by specific developed countries

- Uruguay - SIP Goals

- Argentina - SIP Management

- Honduras - Hospital Reorganization.

- Nicaragua - Safe Maternity.

- Bahamas - (Basic Statistics).

Development of specific data entry programs for the following countries

- Bahamas

- Caribbean English

Version 4.06

April 21, 2014

Adjustment of programs and indicators associated with gender.

Adjustment of programs and indicators SIP METAS - URUGUAY

Compatibility adjustment in MySQL version.

Version 4.05

December 20, 2013

Adjustment of variables in selection programs.

Adjustment of programs and dictionaries associated with the English language.

New startup feature with ODBC connection.

New features proposed by Honduras for managing the SIP online were incorporated.

Version 4.04

October 20, 2013

Incorporation of the HCP form for Guyana.
New report on specific indicators proposed by Uruguay (SIP Goals).
Variable dictionary settings for Description and Distribution programs
Incorporation of the SIP Guyana form, access to its forms and basic analysis.

Version 4.03

August 19, 2013

New report on specific indicators proposed by Nicaragua.
New report on specific indicators proposed by Uruguay.
Adjustments Institution codes proposed by El Salvador.
Correction in the "Name" variable of the patient in the SIP-NEO version.
The messages in English for the HCP and HCP NEO were updated, together with the user manuals.

April 12 2013

The messages in English for the HCP and HCP NEO were updated, together with the user manuals.

Version 4.02

The 25th of March, 2013

Updated English Language messages for changes made in earlier versions of HCP.
Visual adjustments were made based on the suggestions received.

Version 3.23 and Version 4.02

September 18, 2012

The syntax and speed of some indicators are improved together with their compatibility for the different database engines.
Substantial improvements to the entry of the Adolescent Clinical History suggested in the Workshop held in the city of Bogotá-Colombia are incorporated

August 17, 2012

In addition to compatibility with Access and MySQL, compatibility with SQL Server is incorporated.
It is allowed to set and save the home screen to the system.
The syntax in indicators of the basic statistics has been improved.

Selection by date is improved for database engines.

Version 4.01

July 13, 2012

Unfortunately, the version 4.0 HCP image distributed on July 10, 11, and 12, 2012 was incorrect. This image has been updated in version 4.01.

July 9, 2012

General modifications for the backup with selection.

Version 3.22 and Version 4.01

July 13, 2012

The search parameters for the SIP-NEO (Neonatal Hospitalization) were improved.
Information from Ecuadorian institutions is incorporated.
Information from the institutions of Panama is incorporated.

June 21, 2012

Internal improvements in several of the modules of the Perinatal Information System.
Integrity control is incorporated into the missing information program.

May 10, 2012

Indicator calculation speed.
New indicators in the Syphilis report.

New alerts on data entry

If birth = death (anyone) and death in the delivery room YES => error
If birth = alive and discharge alive and death in the delivery room YES => error
If discharged alive and death in the delivery room YES => error
If birth = death (anyone) and live discharge => error
The probable date of delivery must be consistent with the LMP (with 38 to 42 weeks between them).

Selection by variables: when choosing the lower and upper limits, you can include the value without data, or take only those without data as selected value.

Help for codes in the input program (by pressing Ctrl-F3) in the following fields:

- Delivery place.
- Indication of induction and operative delivery.
- Medication during childbirth.
- Maternal pathologies.

Neonatal pathologies.
Congenital abnormalities.

General Settings screen:

Possibility to choose institution and copy it as default institution.
Possibility of suggesting the chosen institution in the admission program.
Possibility of marking so that the SAM maintains the history of modifications in the entered medical records.

New program: standardize null values.