

## Illuminate Online Testing Student Resource

### 1. Illuminate—Signing On and Signing Out

#### o Signing On:

- Teachers will share in the chat the link to your test.
- Click this link. This link will take you to the Illuminate site and will automatically include the Access Code to your test.
- Under 'Student Login,' enter your Student Number. Click 'Next'.
- You will then see the 'Assessment Details' and your own 'Student Details'. Click 'Confirm'.
- Click 'Begin Test'.

Student Login

Enter Your Student Login

Access Code

HKZURXS

Next

illuminate education™

Assessment Details:  
Algebra1.DEVT.Q08.19-20.USI

Student Details:  
\*\*\*\*59889

Confirm

Go Back

Algebra1.DEVT.Q08.19-20.USI

Signed in as

Begin Test

Due Date: Fri Apr 03, 2020 12:12 PM

Questions: 11

#### o Signing Out:

- Click the 'Review/Finish' button
- View the drop down to check any questions that you skipped or left unanswered; go back to answer those
- Click 'Review/Finish' again, then the 'FINISH' button
- Ensure that you see the completion screen and click 'Log Out'

Algebra1.DEVT.Q08.19-20.USI

Review / Finish

Pause

Click on a question number to review the question.

Question	Your Response
1	Answered
2	Answered
3	Answered
4	Answered
5	Not Answered
6	Answered
7	Answered
8	Answered
9	Not Answered

Answer blank questions, then click 'review/finish' again

Algebra1.DEVT.Q08.19-20.USI

Review / Finish

Pause

Click on a question number to review the question.

Question	Your Response
1	Answered
2	Answered
3	Answered
4	Answered
5	Answered
6	Answered
7	Answered
8	Answered
9	Answered

Once you are satisfied with your responses, click 'Finish' from this screen view.

Finish

You have completed your test. What would you like to do next? Log Out

©2020 Illuminate Education™, Inc.

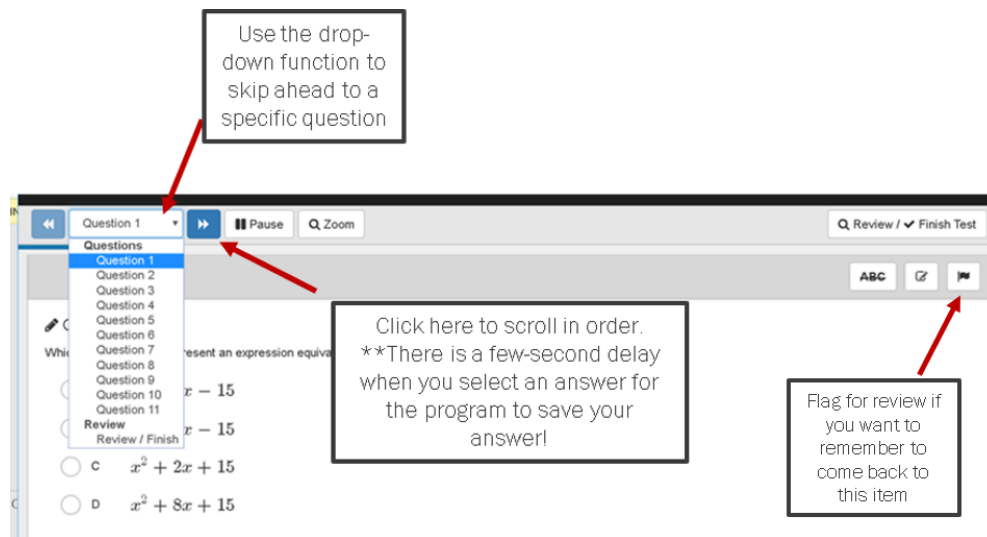


Below are key functionalities that you will use when taking your assessments:

1. Navigating forward and backward throughout the test
2. Dual display
3. Answer eliminator

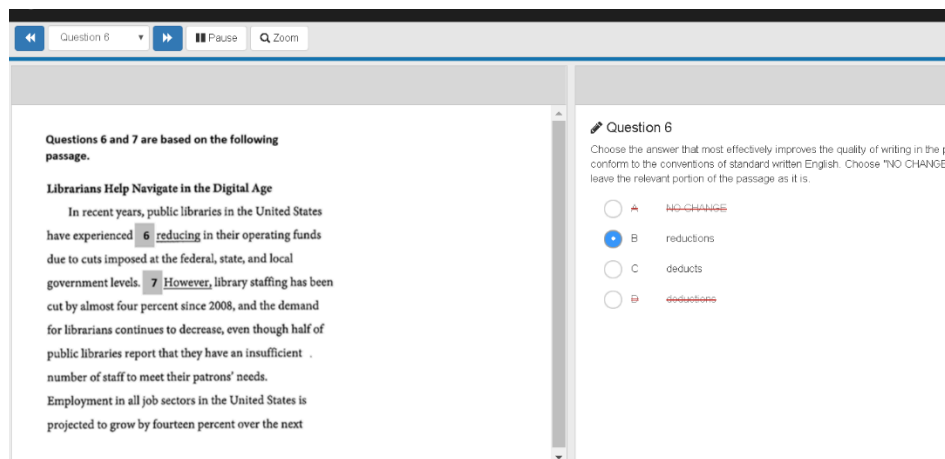
### 1. Navigating forward and backward throughout the test:

To skip ahead to a question or to go back to a question, use the 'Questions' drop-down list in the top left corner.



### 2. Dual display:

Questions directly connected to a text will come up in 'dual display' mode, so that you can view the text while viewing the question. When you scroll to the next question, the text display will remain on the left side of the screen. Note that the text has its own scroll-bar in the middle of your screen if it's longer than what is displayed.



### 3. Answer eliminator:

To use process of elimination, click the ABC icon first. This enables the eliminator tool. Then click on the answer that you wish to eliminate. Click on the ABC icon again to disable the tool.

