

Geo to Go - Google Geo Tools

January 26, 2015 - Union Station - Science Pioneers Workshop

Dr. Eric Langhorst

8th Grade US History and Broadcasting

Discovery Middle School - Liberty Public Schools

speakingofhistory@gmail.com

blog - www.speakingofhistory.com

Features of Google Maps

Google Earth

Labels - turn labels off or on

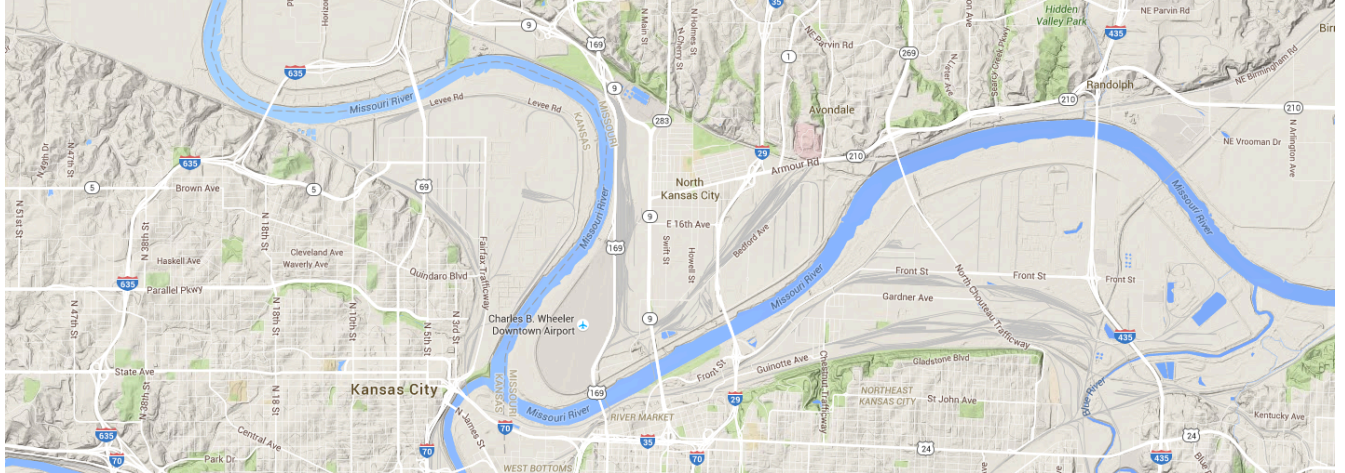
3D - turn 3D imaging off or on, can tilt your view to see 3D images



Traffic - check live traffic in an area or view a typical report

Bicycling - trails, best roads to take

Terrain - turn on topographical view



My Maps Social Features

Your Contributions -

- Contribute - review locations based on your location history

- Reviews - see the reviews you have already posted to Google

Photos

- Still pictures - still pictures that you have posted

- Photospheres - 360 degree photos you have posted

- [Photosphere from outside Apple](#)

- [Photosphere from Science City](#)

Your Timeline - details collected from your personal data

Share or Embed Map - sharing your map with others

Print - create a simple page to print with notes

Explore an Area with a Click

Double click on a location to explore your location

Directions from here - create directions from this location to another place

Directions to here - directions on how to get to this location

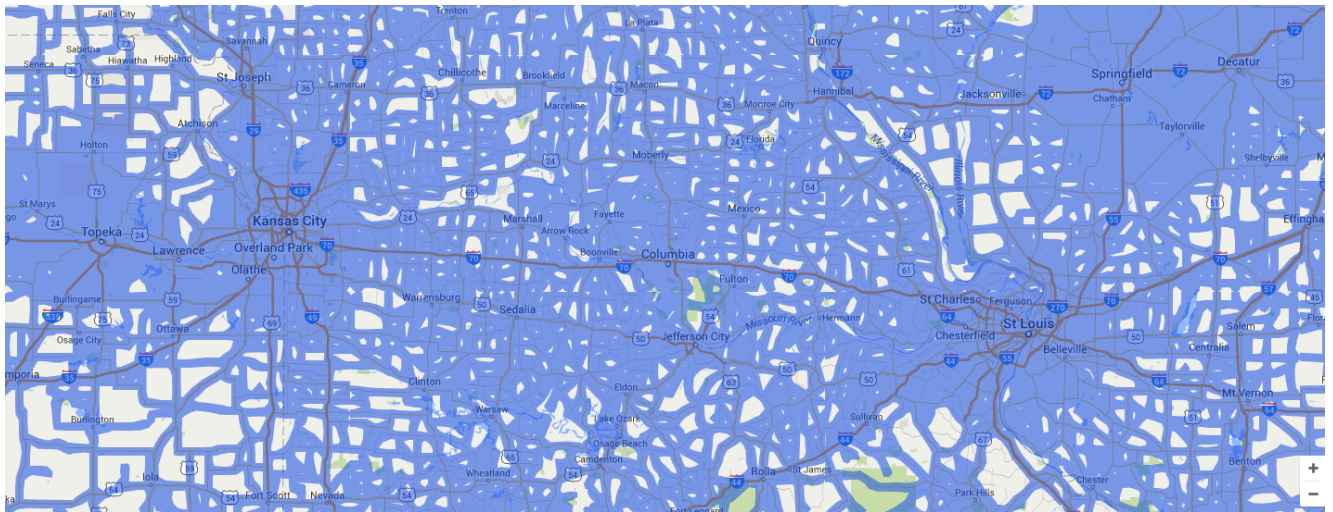
What's here? - check out location attractions

Search nearby - what is near this location

Print - print a page of this location

Measure distance - measure the distance around this location, great for class activities

Street View



[Understand Street View](#) - how does it work, the equipment and the technology

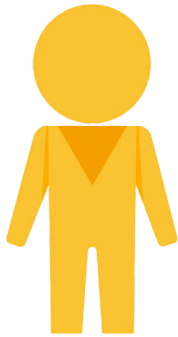
[Exploring Street View](#) - how to use it, where has it been and where is it collecting info now

[GeoView Trekker](#) - You can get it on loan



Using Street View

Picking up Pegman - how to activate Street View in Google Maps



Street View - view from the street

[Example of Gold Rush Tree in Liberty](#) - [YouTube video describing this use](#)

[JFK Assassination](#)

Photospheres - 360 degree images, can also be viewed in Google Cardboard

[Tutorial on taking Photospheres](#)

[Google Expeditions - beta program using Cardboard with schools](#)

[Google Cardboard Eric uses often - made of plastic](#)

See Inside - look inside buildings with 360 views

[The White House Tour through the Google Cultural Institute](#)

[How did Google create the White House tour? \(video on YouTube\)](#)

Historic Street View

Seeing the historical imagery on Street View

[Article about using historical Street View](#)

[Japan example of Historical Street View](#)

[World Trade Center - Historical Street View Example](#)

Time Lapse

[Timelapse Examples](#)

[Time Machine for Timelapse](#) - enter any location to see timelapse

Maps Gallery

Find and use existing maps with your students

[Google Maps Gallery](#)

[50 Top Places to See Celebrities in NYC](#)

[Lewis and Clark Expedition Map as example](#)

My Maps

An archive of all your maps

all the way on the bottom - Create a Map

Making Your Map

Add your title and a description - you'll want it later

Zoom in and out - bottom right

Layers

You can have up to 10 layers on a single map

Turn layers on and off

on bottom you can select what type of map you want to view in your map

The Toolbar

Undo

Redo

Select items

Add marker

Draw a line

Add directions

Measure distances are areas

Adding a Placemark

Latitude and Longitude

Union Station = 39.085200, -94.585734

[Finding Lat / Long website](#)

Search for location - type in name of location to find on map

Editing a Placemark

Style - select color, type of pin (icon)

Edit - change title, add text

Add image or video - add an image or video (must have a link to either a picture or video)

Direction to here - add a layer which is gives directions

Challenge Map

Create a map with two layers:

1. At least 3 favorite places in Kansas City to eat
2. At least 3 places in Kansas City you would take an out of town family member

Add a text description to each placemark, add at least one image on one of the placemarkers and add at least one video to a placemark

Sharing your map

Changing who can access

Link sharing


-  **On - Public on the web**
Anyone on the Internet can find and access. No sign-in required.
-  **On - Anyone with the link**
Anyone who has the link can access. No sign-in required.
-  **Off - Specific people**
Shared with specific people.

Changing what people can change

Invite people:

Owner settings [Learn more](#)

Prevent editors from changing access and adding new people

-  Can edit ▾
- ✓ Can edit
- Can view

Finding the link to your map

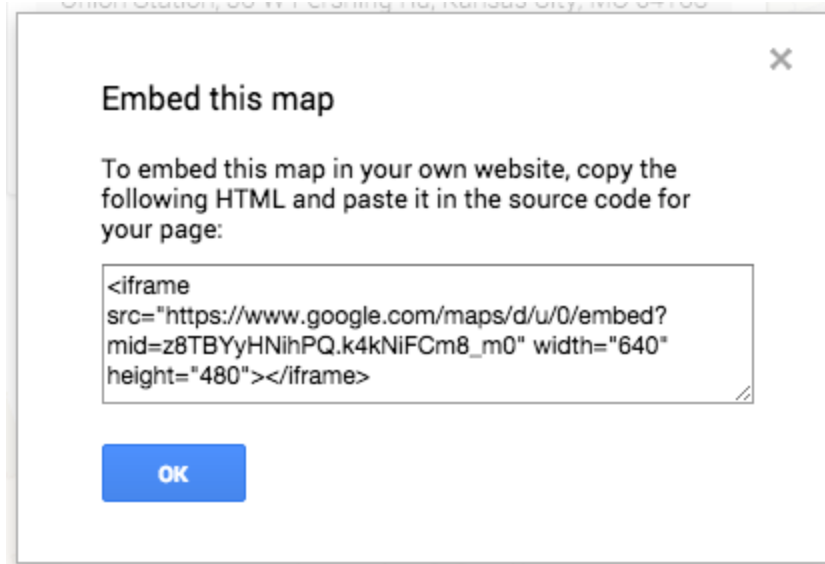
Sharing settings

Link to share (only accessible by collaborators)

https://www.google.com/maps/d/edit?mid=z8TBYyHNihPQ.k4kNiFCm8_m0&usp=sha

Share link via:    

Embedding the map in a webpage



Having students “turn in” their maps

Google Form to collect links

Google Map for Class Share

Your username (elanghorst@student.liberty.k12.mo.us) will be recorded when you submit this form. Not elanghorst? [Sign out](#)

* Required

First name *

Last name *
Which class period do you have US History? *

Period 3
 Period 5
 Period 6

After making sure your map is shared (Mr. Langhorst is able to view the map) please copy and share your URL link here *

 Send me a copy of my responses.

Submit

Never submit passwords through Google Forms.

Geography Themed Games

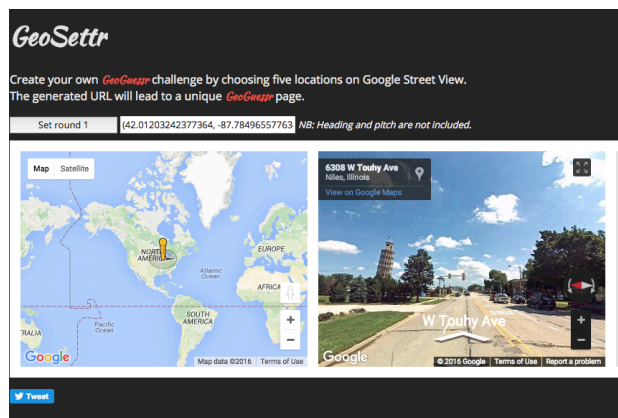
- [Smarty Pins](#)



- [GeoGuessr](#)



- [GeoSettr](#)



Google Tour Builder

[Google Tour Builder](#) - create a geo based story

[BBQ Tip example in Tour Builder](#)

[Corps of Discovery Tour Builder Example](#)

Adding KML Files

importing KML files to add to your map

[example - National Registry of Historic Places in Clay County](#)

Using Data Tables

Creating a Google Sheet with locations using Google Forms - [Link to Google Form for workshop](#)

Adding a Google Form to your map

Video tutorial of adding a form to your map

Editing a table on your Map

Fusion Tables

[Finding a data table - Google web tables search site](#)

[Earthquake data table link for spreadsheet data](#)

Importing a data table to your map

Adding Borders to Maps

[State KML Fusion Table](#)

Google Map Resources

[Google Maps Mania Blog](#)

[Google Maps - Google+ page](#)

[Google Maps Blog - Lat / Long](#)

[Google Maps YouTube Channel](#)

[Google Maps Twitter Feed - @googlemaps](#)

[Google Geo Teachers Institute - 2015 Info](#)