

# AmusingKeypad Wiki

*[W.I.P]*

---

## Table of Contents

<b>AmusingKeypad Wiki</b>	<b>1</b>
<b>Ordering</b>	<b>2</b>
Deliveries	2
Tracking FAQ	2
Countries not on the list	2
<b>Troubleshooting</b>	<b>3</b>
Frequently Asked Questions	3
General fixes	4
Debounce	4
<b>Other</b>	<b>5</b>
Switches	5

**Still have questions?**

Join our Discord server [here!](#)

## Ordering

### Shipping

General shipping time is 9-15 days, but be warned that it may vary some depending on your country of residence, as well as other factors such as holidays (and currently covid). Some parcels may take up to a month plus, although these cases are quite rare. Certain countries like the US and UK tend to be quicker.

Countries that are known for long shipping times:

- *Coming soon™*

### Shipping to the EU

Please be aware that due to the new taxation and customs regulations, Antecer **cannot** ship to EU-residents. On the [store page](#), you will be presented with three separate official distributors you can order from instead. If you have placed an order to be shipped to the EU, you will be refunded.

Distributors also linked here: [autobahn88](#) | [AliExpress 1](#) | [AliExpress 2](#)

*Old links, need confirmation:* [AliExpress](#) | [Amazon](#)

### Tracking FAQ

#### **Q: What sites can I use to track my keypad?**

A: Most tracking sites can be used. We recommend [17track](#) and [Parcel Monitor](#), as they have some useful features and usually work fine.

#### **Q: I haven't received a tracking number / How do I find my tracking number?**

A: You should receive an email from PayPal with the tracking number included as soon as your package has been shipped. Make sure to check your spam folder. If you still cannot find your tracking number, please contact us on one of our [platforms](#).

# Troubleshooting

## Frequently Asked Questions

### **Q1: The sticky pad is no longer sticky, what do I do?**

**A1:** The sticky pad is reusable and will regain its stickiness when rinsed with water.

### **Q2: How do I change the switches on my keypad?**

**A2:** Press the two tabs on the sides of the switch and pull it out. Various methods to change the switches can be seen [here](#). Be careful when taking the switches out or putting them into the keypad, as they can break. Using your tablet's pen nibs can work, as they provide decent leverage.

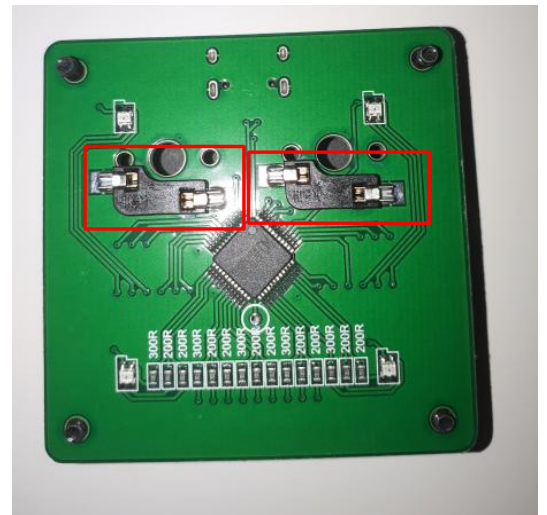
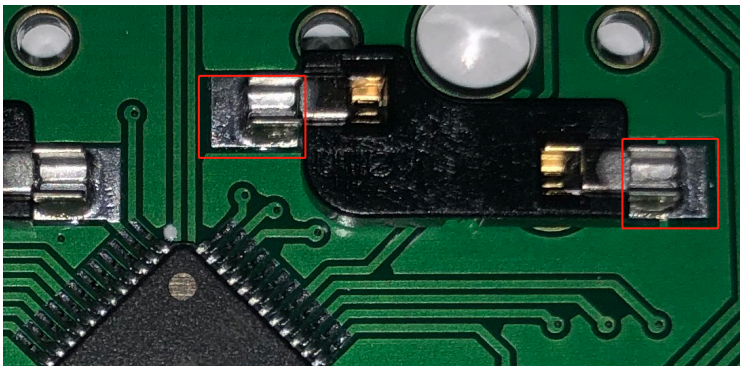
### **Q3: I'm experiencing double taps, what do I do?**

**A3:** You can change the debounce of the keypad using the AmusingKeypad application. Around 50 should do the trick for most people. The debounce decides how many milliseconds have to pass before another input can be registered. (See underneath if the problem persists)

### **Q4: My keypad is randomly tapping/not registering properly**

**A4:** The connector pins on the bottom of the switches are prone to bending and snapping. Pull out the switch(es) you're experiencing problems with and check if they are damaged. If they are, see "Are your switch pins bent" under. If not, the problem might lie in the keypads' hotswap connectors. In this case, there are two fixes you can try.

1. Place a small piece of paper under the hotswap connector (the black box underneath the PCB) so that the connector is pushed against the PCB. A piece of paper towel is ideal. If the connector still feels off, try folding said paper twice, and then put it under again.
2. Resolder the hotswap connector.  
This fix should be more "permanent" than the former, but is somewhat more complicated, especially for those without soldering experience.



For KeypadV3 users:

**Q5: My cursor moves to the top left of the screen (Win10)**

A5: Find "VID\_001C&PID\_100B&MI\_02" from all mouse devices and disable it. Another possible (osu only?) fix, is going into your osu settings, and disabling Raw Input.

## General fixes

### **Is your cable working?**

Consider buying a new USB-C data cable to use with the keypad. The cable that comes with the keypad can be faulty and lead to the keypad not functioning as it should. Double check that the cable is transferring power and data as it should by plugging it into another USB-C compatible device if you have one. (Note: C-to-C cables might not currently work with the keypad)

### **Have you tried other ports?**

In some instances, the keypad does not function when plugged into certain USB ports. Try plugging your keypad into different ports (front/rear I/O, USB 2.0 and 3.0 etc.) on your computer to see if there is any difference.

### **Are your switch pins bent?**

As stated, the connector pins are rather fragile. If they are bent you can try bending them back, but be careful as they might snap. If they've snapped, you can buy new switches or try to fix the broken one. This can be done by replacing the switch housing with the broken connector(s) with one that is in good condition. See [here](#). One way you could try straightening them out is by grabbing a pair of pliers, and gently squeezing the bent pin into a close to original shape. You can normally use your fingers, but consider using the prior method if your pin is bent greatly out of shape.

### **Debounce & Double-Tapping**

Default debounce is 50, the most you really want to go to is 100, but sometimes having it set to a lower debounce fixes double-tapping issues. From testing, double-tapping doesn't happen on cherry mx red off brands, as they have a better fit than normal switches\*.

See Q4 in the FAQ section above. Apparently the tightness of the screws can influence the Double-Tapping. So just screwing the screws in a bit tighter can "fix" the Issue.

\* mileage may vary

## Other

### Rain's replacement switch tips

If the switch that you enjoy breaks, you may be wanting a similar feeling in your keystroke. One of the first things that you need to take note of is the two different types, Linear and Tactile. Linear switches are switches that have no bump, and press straight down (ex. MX Red, Black and Speed Silver). Tactile switches have a bump located (generally) around the actuation point (ex. MX Blues and Browns). The most popular switch brands are Cherry MX, Kalih, Gateron, and Outemu. Each brand has their own line of switches, identified by their color (Red, Green, Brown, Ect.). Down below. A pack of mechanical switches (generally 10 per pack) can cost you anywhere from \$2.40 to \$15 USD.

### Sakurios/Roselios

[https://zealpc.net/products/roselios\\_sakurios](https://zealpc.net/products/roselios_sakurios)

These switches are linear silent switches with two different weights 62g (Sakurios) and 67g (Roselios). They both have clear shells, so RGB lighting will show through.

### ZugGear Pandas

<https://www.amazon.com/>

These are Imitation Pandas with 67g force and a soft tactile bump, think softer MX Browns.

### Purple Zealios V2

<https://zealpc.net/>

Non-audible tactile switches with a force range of 62g-78g

### Gateron Greens

<https://novelkeys.xyz/products/gateron-switches>

80g tactile switches that feel clacky and heavy

You might also be wondering what switches will fit the keypad, any 3-5 pin switches will work with the keypad, as is the norm.