

GEOINT

WIUT CyberSecurity Club

writeup by @elastic



Identify the photo's coordinates with an accuracy of 10 m.

This task is not just about "finding" the place but about identifying the exact shooting point. I tried Google Images first but didn't find any matching photos.



Add to your search



AI Mode

All

Exact matches

Products

Visual matches

About this image

Feedback



uzavtoyul.uz
Poytaxt ko'chalarining avvalgi va hozirgi ko'rinishlari



Yandex
Caffelito Coffee, coffee to go, Tashkent, Yunusabad District,...



yandex.uz
Bek Kichkintoy Xususiy bolalar bog'chasi, bolalar bog'chasi,...



uzavtoyul.uz

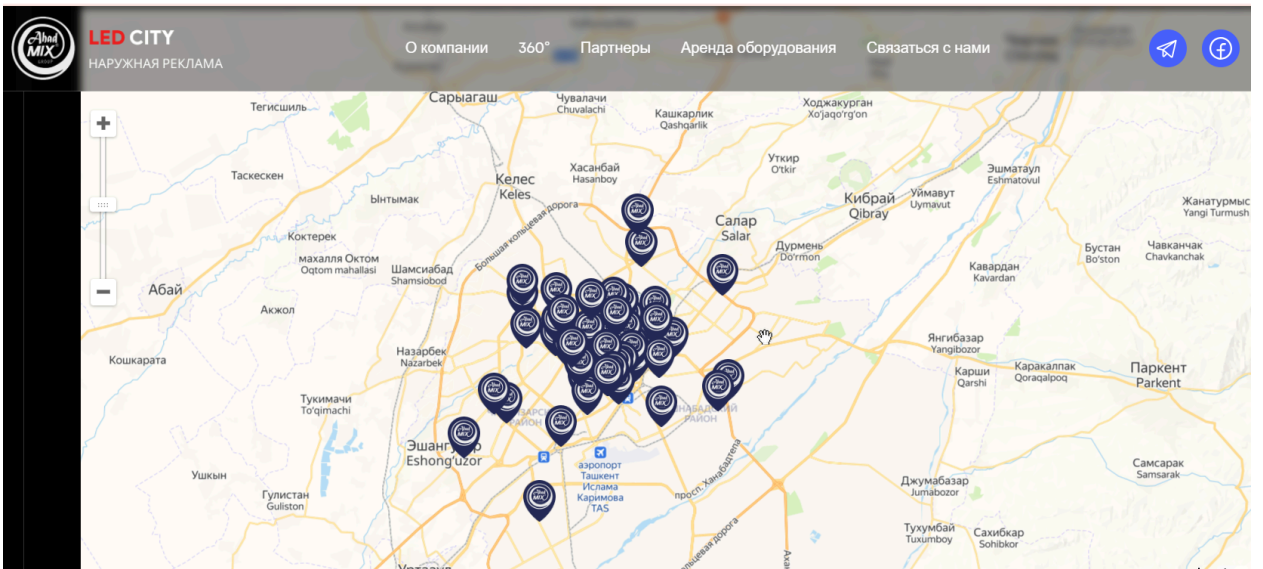


Activate Windows
Poytaxt ko'chalarining avvalgi va hozirgi ko'rinishlari

However, I noticed two clear clues: the Ahad Mix brand and an orange building on the right side of the road.



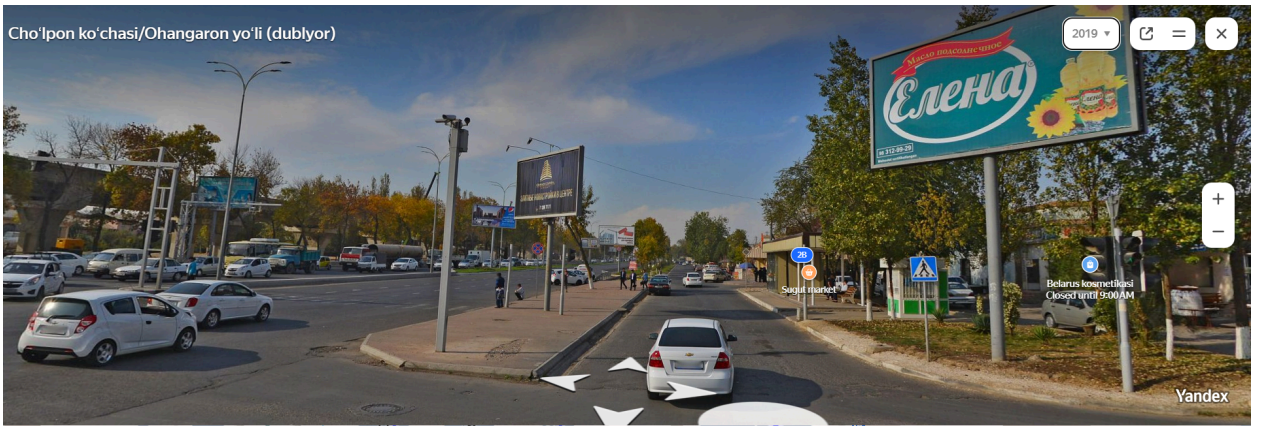
So I searched for Ahad Mix company in Google again and found their website with locations of ad banners. From the image it is likely it to be not in the center of the Tashkent and the road has "кормашка" too.



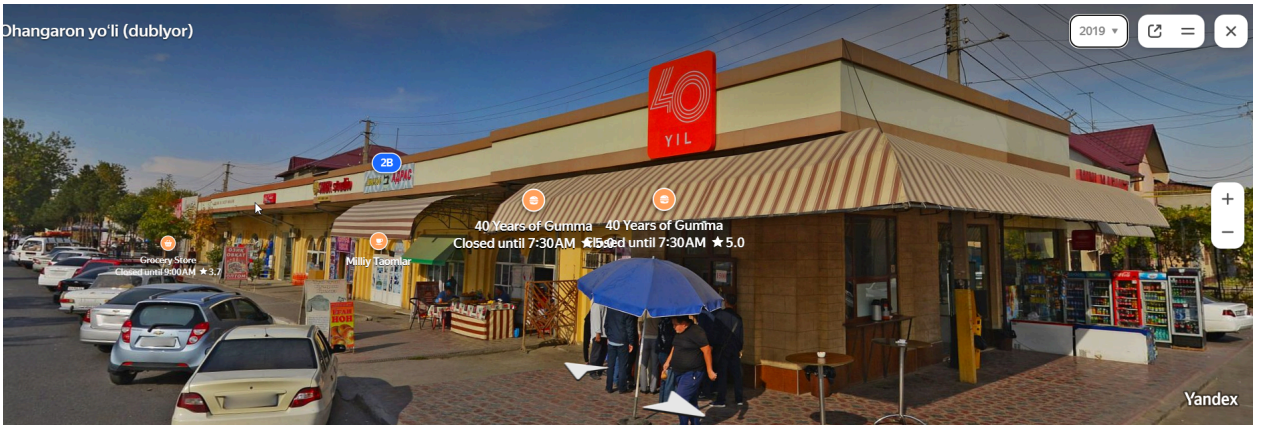
From there on I checked the ones that are out of the center with the patterns given above.



Then I tried to get the 3d image from google maps or yandex map. It turned out that google maps doesn't have them but yandex map does.



The Yandex images were from 2019, so I looked for more details in the surrounding buildings. Moving around, I found a café that had been restored.



There I saw that café was restored and the image was 5 year old.

About this image

A version of this image is **at least 5 years old**



Found on these pages



Yandex

<https://yandex.com> › Maps › Tashkent › Fast food



40 yil Gumma

19 Feb 2025 — Fast food 40 yil Gumma at Tashkent, Yashnabad City District, Citizen assemblies of Amir Temur Mahallah, Ulugbek street, 2B, Tuzel metro station ... Yandex Maps.



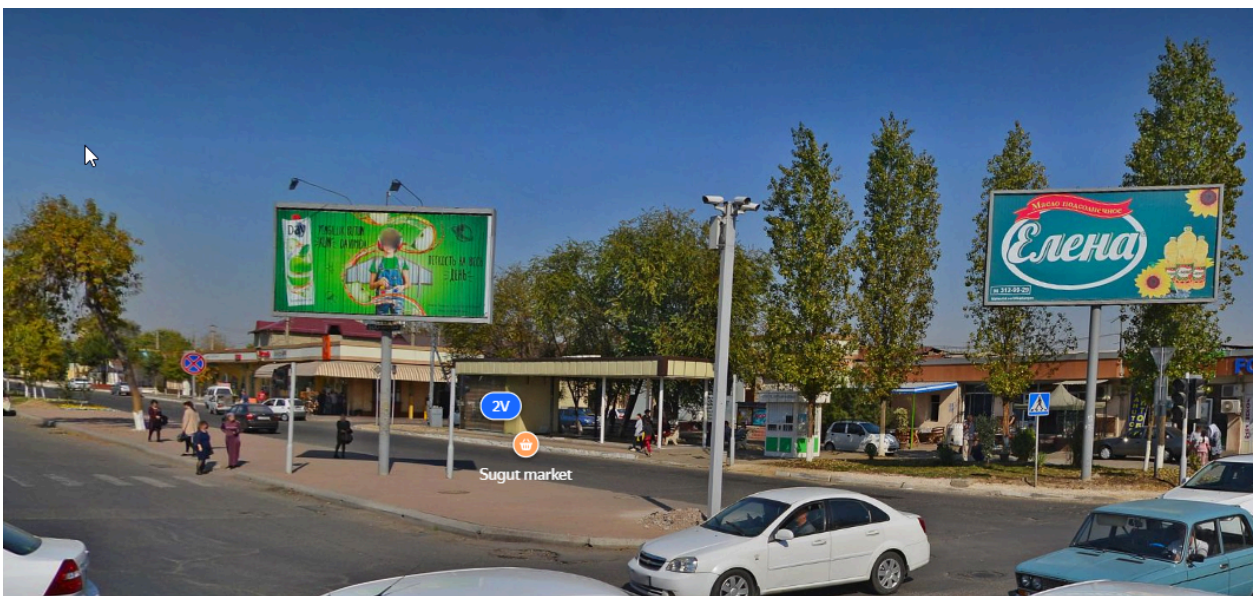
yandex.uz

<https://yandex.uz> › Yandex Maps › Toshkent › Tez ovqatl...

[Translate this page](#)



One building similarity alone wasn't enough proof, but I also noticed the trees had aged in a way that matched perfectly.



By combining open-source imagery, map data, and careful visual alignment, it was possible to narrow the location to within ten meters despite a six-year gap between the reference and target images.