



**Nichols Point Primary School No. 3163**

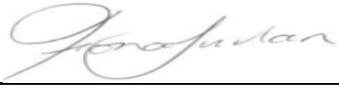
**Policies**

**YARD DUTY AND SUPERVISION**

**CHILD SAFE 9**

**PRIMARY SCHOOLS**



Principal Signature: Date: 14th Aug 2024 	School Council Signature: Date: 14th Aug 2024
<b><u>To be reviewed in: 2026</u></b>	

**Help for non-English speakers**



If you need help to understand the information in this policy please contact the school principal.

**Purpose**

To ensure school staff understand their supervision and yard duty responsibilities.

**Scope**

This policy applies to all teaching and non-teaching staff at Nichols Point Primary School, including education support staff, casual relief teachers and visiting teachers.

**Policy**

Appropriate supervision is an important strategy to monitor student behaviour and enables staff to identify and respond to possible risks at school as they arise. It also plays a vital role in helping schools to discharge their duty of care to students.

The Principal is responsible for ensuring that there is a well organised and responsive system of supervision and yard duty in place during school hours, before and after school, and on school excursions and camps and other school activities.

School staff are responsible for following reasonable and lawful instructions from the Principal, including instructions to provide supervision to students at specific dates, times and places. Supervision should be undertaken in a way that identifies and mitigates risks to child safety.

### **Before and after school**

Nichols Point Primary School's grounds are supervised by school staff from 8.20am until 3.30pm. Outside of these hours, school staff will not be available to supervise students.

**8.30 - 8.45am** - Morning Reading / **8.45am - 9.00am** playtime

**3.15pm - 3.30pm** - Student Pick up.

Parents and carers will be advised through the school newsletter and social media that they should not allow their children to attend Nichols Point Primary School outside of these hours. Families will be encouraged to contact Stepping Stones on 1300 665 699 for more information about the before and after school care facilities available to our school community.

If a student arrives at school before supervision commences at the beginning of the day, the Principal or nominee staff member will, as soon as practicable, follow up with the parent/carer to:

advise of the supervision arrangements before school  
request that the parent/carer make alternate arrangements.

If a student is not collected before supervision finishes at the end of the day, the Principal or nominee staff member will consider whether it is appropriate to:

- attempt to contact the parents/carers
- attempt to contact the emergency contacts
- place the student in an out of school hours care program (if available and the parent consents)
- contact Victoria Police and/or Child Protection to arrange for the supervision, care and protection of the student.

## Yard duty

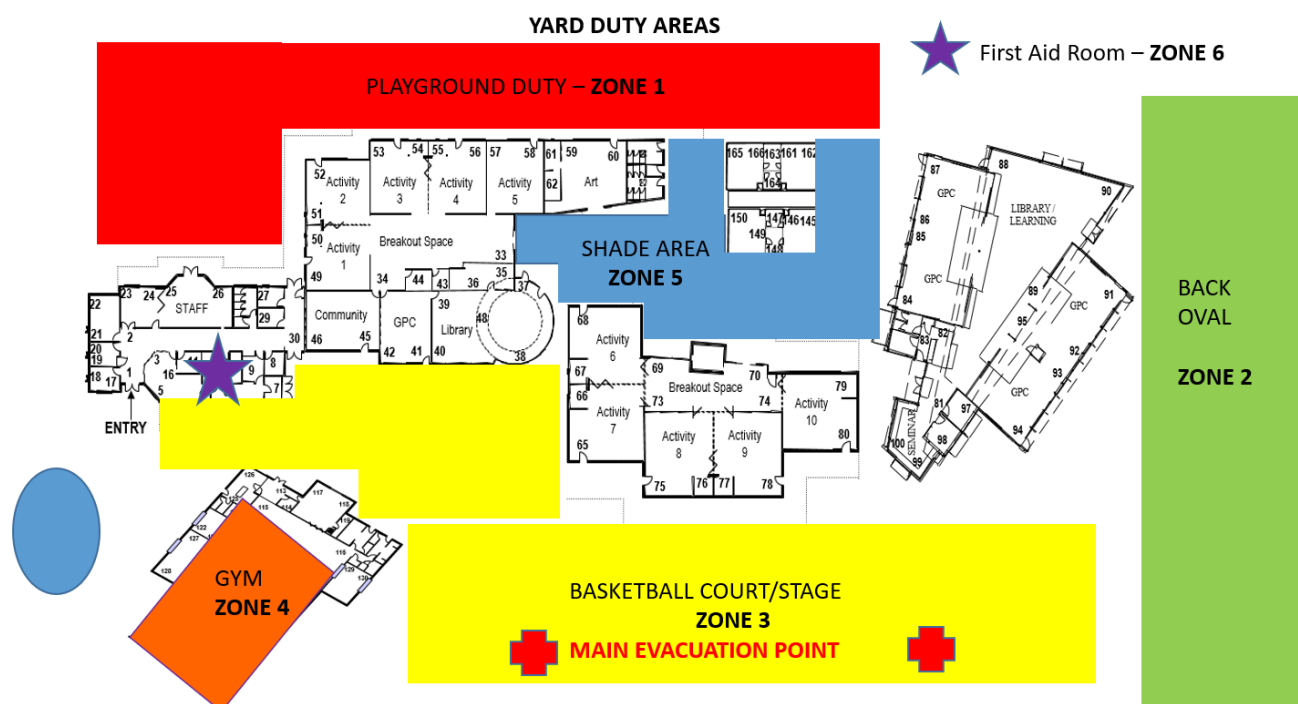
All staff at Nichols Point Primary School are expected to assist with yard duty supervision and will be included in the term roster.

The Yard Duty Coordinator is responsible for preparing and communicating the yard duty roster on a regular basis. At Nichols Point Primary School, school staff will be designated a specific yard duty area to supervise.

## **Yard duty zones**

The designated yard duty areas for our school (as at insert date eg Term 1, 2021) are

<u><b>Zone 1 - Junior Playground</b></u>	<u><b>Zone 6 - First Aid (Administration)</b></u>
<u><b>Zone 2 - Back Oval</b></u>	
<u><b>Zone 3 - Basketball Court</b></u>	
<u><b>Zone 4 - Gymnasium</b></u>	
<u><b>Zone 5 - Shade Area</b></u>	



## **Yard duty equipment**

### **School staff must:**

- Wear a provided safety/hi-vis vest whilst on yard duty. Safety/hi-vis vests will be stored in learning spaces.
- Be familiar with student medical conditions in relation to the medical posters positioned around the school.

Any yard duty equipment must be returned after the period of supervision or handed to the relieving staff member.

### **Yard duty responsibilities**

Staff who are rostered for yard duty must remain in the designated area until they are replaced by a relieving staff member.

### **During yard duty, supervising school staff must:**

- methodically move around the designated zone ensuring active supervision of all students
- where safe to do so, approach any unknown visitor who is observed on school grounds without a clear legitimate purpose, and ensure they have a visitor pass and have signed in (excluding drop off and collection periods)
- ensure students remain in their designated year level zones - if areas have been instructed by leadership.
- be alert and vigilant
- intervene immediately if potentially dangerous or inappropriate behaviour is observed in the yard
- enforce behavioural standards and implement appropriate consequences for breaches of safety rules, in accordance with any relevant disciplinary measures set out in the school's Student Engagement policy
- ensure that students who require first aid assistance receive it as soon as practicable
- log any incidents or near misses as appropriate on the School Management System
- If being relieved of their yard duty shift by another staff member (for example, where the shift is 'split' into 2 consecutive time periods), the staff member must ensure that a brief but adequate verbal 'handover' is given to the relieving staff member in relation to any issues which may have arisen during the first shift.

If the supervising staff member is unable to conduct yard duty at the designated time, they should contact the Assistant Principal with as much notice as possible prior to the relevant yard duty shift to ensure that alternative arrangements are made.

If the supervising staff member needs to leave yard duty during the allocated time, they should contact the Assistant Principal but should not leave the designated area until the relieving staff member has arrived in the designated area.

If the relieving staff member does not arrive for yard duty, the staff member currently on duty should call the Administration Office to check the yard duty timetable and alert the relevant staff and not leave the designated area until a relieving staff member has arrived.

Students will be encouraged to speak to the supervising yard duty staff member if they require assistance during recess or lunchtime.

### **Classroom**

The classroom teacher is responsible for the supervision of all students in their care during class.

If a teacher needs to leave the classroom unattended at any time during a lesson, they should first contact the Year Level Coordinator for assistance. The teacher should then wait until a replacement staff member has arrived at the classroom before leaving.

### **School activities, camps and excursions**

The Principal and leadership team are responsible for ensuring that students are appropriately supervised during all school activities, camps and excursions, including when external providers are engaged to conduct part or all of the activity. Appropriate supervision will be planned for school activities, camps and excursions on an individual basis, depending on the activities to be undertaken and the level of potential risk involved, and will follow the supervision requirements in the Department of Education and Training [Excursions Policy](#).

### **Digital devices and virtual classroom**

Nichols Point Primary School follows the Department's **Cybersafety and Responsible Use of Technologies Policy** with respect to supervision of students using digital devices.

Nichols Point Primary School will also ensure appropriate supervision of students participating in remote and flexible learning environments while on school site. In these cases, students will be supervised by designated teachers assigned for the specific days.

### **While parents are responsible for the appropriate supervision of students accessing virtual classrooms from home:**

- student attendance will be monitored by a daily attendance roll.
- any wellbeing or safety concerns for the student will be managed in accordance with our usual processes – refer to our Student Wellbeing and Engagement Policy and our Child Safety Responding and Reporting Policy and Procedures for further information.

### **Students requiring additional supervision support**

Sometimes students will require additional supervision, such as students with disability or other additional needs. In these cases, the Principal or delegate will ensure arrangements are made to roster additional staff as required. This may include on yard duty, in the classroom or during school activities.

### **Supervision of student in emergency operating environments**

In emergency circumstances our school will follow our Emergency Management Plan, including with respect to supervision.

In the event of any mandatory period of remote or flexible learning our School will follow the operations guidance issued by the Department.

### **Other areas requiring supervision**

On occasions, students may be required to have staff supervision while using the bathroom. The teacher on duty will ensure that another member of staff will be visible at all times.

Students due to certain circumstances may be required to have a partner to go to the bathroom due to behavioural issues.

### **COMMUNICATION**

This policy will be communicated to our school community in the following ways

- Included in staff induction processes
- Discussed at staff briefings or meetings, as required
- Included in our staff handbook
- Made available in hard copy from school administration upon request

Information for parents and students on supervision before and after school is available on our school website and parent reminders are sent at the beginning of each term in our school newsletter.

### **Further Information and Resources**

- the Department's Policy and Advisory Library (PAL):
- [Child Safe Standards](#)
- [Cybersafety and Responsible Use of Technologies](#)
- [Duty of Care](#)
- [Excursions](#)
- [Supervision of Students](#)
- [Visitors in Schools](#)