

FLASHING ODOMETER MILES **NUMBERS** **CAN MAKE A 500e DIE WHILE** **DRIVING!**

Here's the ~\$130 Windows fix, to avoid the ~\$300 dealership fee:

The flashing has happened to many of us with no apparent cause, so there seems to be no way to avoid it.

Workarounds to prevent stalling while driving:

- Ignore the % gauge, **AND** always charge til it stops at 100%, **AND** zero out a trip gauge to keep track of your range.
- Or always assume it was at 0% when you plug in, **AND** charge long enough to make it to the next charger.

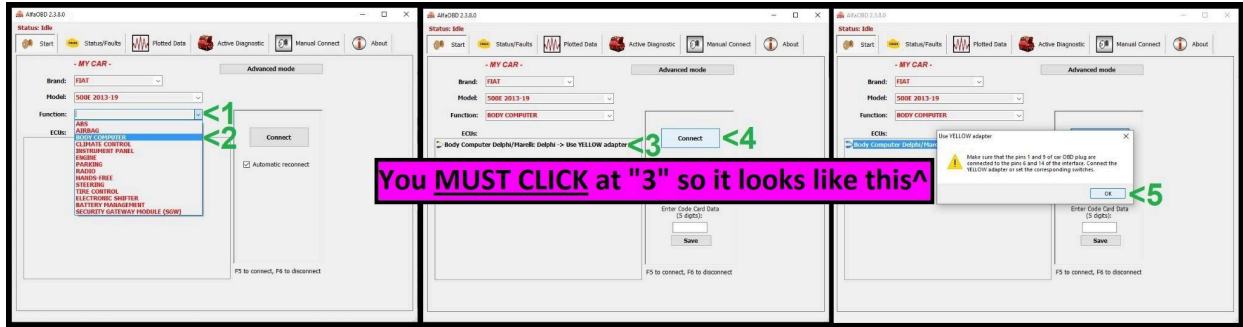
The 5-minute fix is called "Proxy Alignment". It requires:

- A ~\$13 [Yellow Adapter \(click here\)](#) that isn't just a yellow-colored extension cable.
- [OnBoard Diagnostics \("OBD" - click here for details\)](#) including a ~\$54 [OBDLink.com](#) EX cable, & ~\$60 lifetime membership to the AlfaOBD.com app.

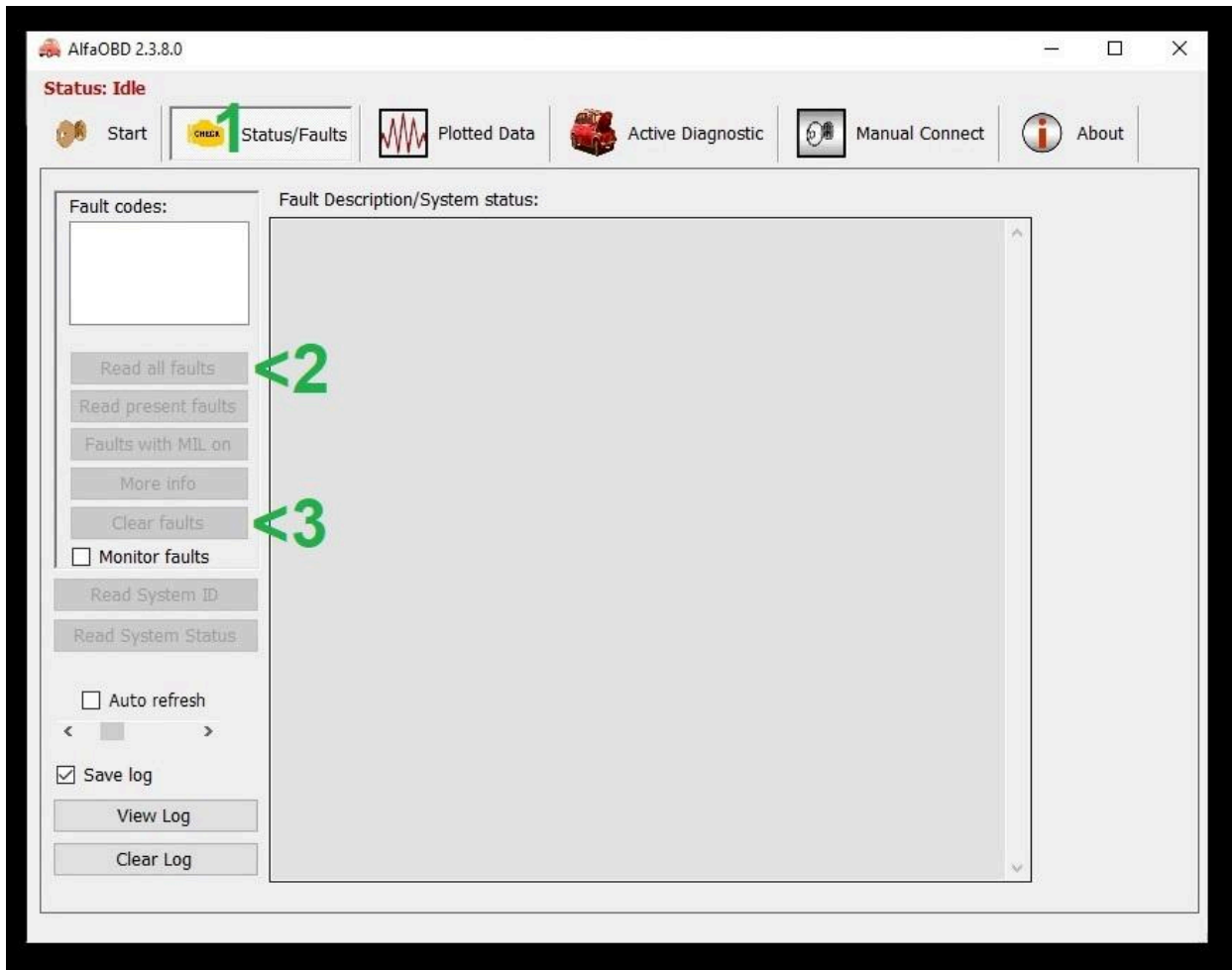
1: [Do the 4-step connect \(click here\)](#). Short version below*.

2: [Insert a proper Yellow Adapter \(click here\)](#) between the OBDLink EX cable & the car.

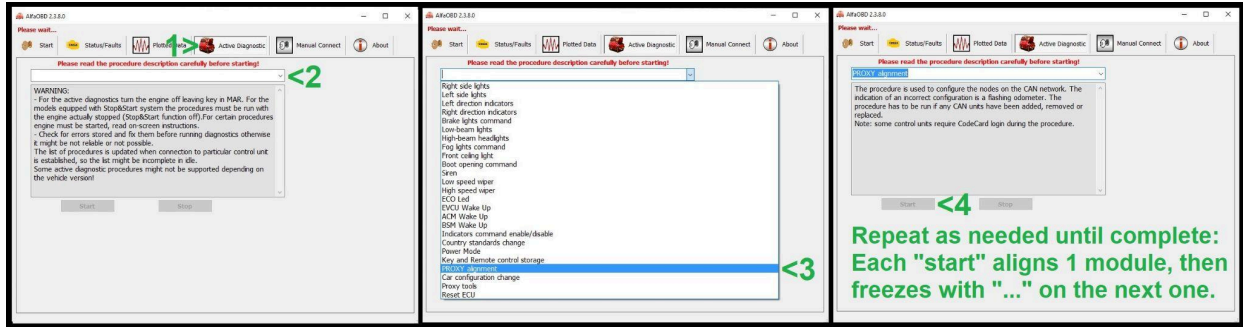
3: Connect to Body Computer:



4: Scan & Clear Faults:



5: Proxy Alignment (requires \$49 AlfaOBD lifetime membership):



After Proxy Alignment, if the car's Bluetooth won't connect, unpair it in the car's menu with the steering wheel buttons, & then re-pair.

*** If the pics below aren't sufficient, see the [4-step connect link \(click here\)](#).**

