

**JKWGI TEMPLATE: TITLE WRITTEN NO MORE  
THAN 10 WORDS (12 PT, BOOK ANTIQUA)**

(space 1)

Author Name <sup>1)</sup>, Author Name <sup>2)</sup> (11 pt)

Name of Faculty <sup>1)</sup>, Name of Faculty <sup>2)</sup> (if different faculties) (11 pt)

University Name (11 pt) Country Name (11 pt)

---

**ABSTRACT (11 pt)**

(space 1)

The abstract contains the background of the research, research methods, research results, discussion, conclusions, and recommendations. Abstract written in Indonesian, one paragraph, maximum 100-250 words, left-right aligned.

**Keywords** (11 pt): 3--5 words/phrases, punctuated with commas in each word/phrase

**ABSTRACT (11 pt)**

*The abstract should be written in English with book antiqua, font 11, single space. Keywords should be included at the end of abstract. The number of words is about 100 to 250 words. The abstract should consist of a brief description of the background(s), method(s), result(s), discussion, conclusion and recommendation of the research.*

**Keywords:** Teenagers; Health Behavior; SEFT Therapy (11 pt, keywords as many as 3-4 words arranged in alphabetical order, Initial capital letters and separated using a semicolon (;)

---

Correspondence email: (Current email address) (**Font Book Antiqua, 10 pt**)

Correspondence address: (**Font Book Antiqua, 10 pt**)

(space 2)

**INTRODUCTION (UPPERCASE, JUSTIFY, BOLD, FONT BOOK ANTIQUA 11)**

The paper is written in 5-12 pages (if more will experience truncation), 1 column, left-right aligned, and one space. The beginning of a paragraph always starts one tab from the left of the page. Each page is numbered in the middle of the page. The introduction is written in Book Antiqua, font 11, spaced 1, and 1 column. The introductory section contains the background, problems solved, objectives, urgency/justification of the research, and related research that has been carried out by other researchers (if any) as well as the results of the preliminary study. The paper size used is A4, with margins Top 1", Bottom 1", Left 0.75" and Right 0.75" (in inches), or margins Top 2.54 cm, Bottom 2.54 cm, Left 1.90 cm and Right 1.90 cm (in centimeters). Pictures and photos must be clear and equipped with proportional images or photo captions, using a page layout with columns One.

**RESEARCH METHODS (UPPERCASE, JUSTIFY, BOLD, FONT BOOK ANTIQUA 11)**

The research method contains the type, time, sample, research variables, and instruments/questionnaires used, and the data analysis is briefly written in this section. The type of research that is experimental in the laboratory must include the main material with clear specifications and sources. In this section it should explain how research ethics approval was obtained and the protection of the rights of the respondents imposed. Written in Book Antiqua letters, font 11, space 1, and the size of the paper used is A4, with margins Top 1", Bottom 1", Left 0.75" and Right 0.75" (in inches), or margin Top 2.54 cm, Bottom 2.54 cm, Left 1.90 cm and Right 1.90 cm (in centimeters).

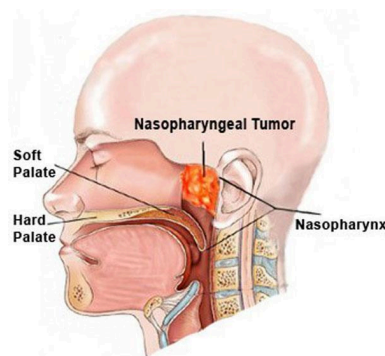
## RESULTS AND DISCUSSION (UPPERCASE, JUSTIFY, BOLD, FONT BOOK ANTIQUA 11)

This section contains data on the characteristics of the research subject/ object/ sample/ respondent, the results of data analysis, instrument and hypothesis testing (if any), answers to research questions, findings, and interpretation of the findings. This section, if possible, can be graphed for each research variable. Next, the descriptive statistical values (eg Mean, SD, Maximum, Minimum) and their interpretations are presented successively. At the end of this section, the results of the research hypothesis testing and discussion are sufficient. Writing references or citations follows the APA system. For example, the last name of the author followed by the year of publication, then the writing (Muhtadi, 2015).

The results of the research and discussion are written in a single unit written in Book Antiqua letters, font 11, spaced 1 and the paper size used is A4, with margins Top 1", Bottom 1", Left 0.75" and Right 0.75" (in inches), or margins Top 2.54 cm, Bottom 2.54 cm, Left 1.90 cm and Right 1.90 cm (in centimeters). The data is presented in an open table. Tables and figures should be referenced in the text and given sufficient titles and descriptions, so as not to rely on text. The table title is placed above the table, while the image title is placed at the bottom of the figure. Tables are numbered in order of appearance, as are pictures. Pictures and photos must be clear and equipped with proportional images or photo captions, using a page layout with columns One. Images and graphics are placed in the center of the page, (see example Figure 1). Tables are also placed in the middle of the page using horizontal lines, without vertical lines. Numbers and table titles are placed above the table (see example Table 1).

**Table 1. Age Distribution of Pregnant Women in Hospital X, 2022 (n=88)**

No	Characteristics of Pregnant Women	Frequency	Percentage (%)
<b>Age</b>			
1	24 – 28 Years	17	19.31
2	29 – 32 Years	24	27.27
3	33 – 36 Years	33	37.5
4	37 – 40 Years	14	15.90
<b>Total</b>		<b>88</b>	<b>100</b>



**Figure 1. Nasopharyngeal Tumor**

## CONCLUSION (UPPERCASE, JUSTIFY, BOLD, FONT BOOK ANTIQUA 11)

Conclusions are drawn from the results and discussion of the research and answer the research questions/objectives briefly and clearly, written in Book Antiqua letters, font 11, spaced 1 and the paper size used is A4, with margins Top 1", Bottom 1", Left 0, 75" and Right 0.75" (in inches), or margin Top 2.54 cm, Bottom 2.54 cm, Left 1.90 cm and Right 1.90 cm (in centimeters).

#### **SUGGESTIONS (UPPERCASE, JUSTIFY, BOLD, FONT BOOK ANTIQUA 11)**

Suggestions are given to those who benefit from the research to take action based on the results and discussion of the research, written briefly and clearly in Book Antiqua letters, font 11, spaced 1 and the paper size used is A4, with margins top 1", bottom 1", left 0.75" and right 0.75" (in inches), or margin-top 2.54 cm, bottom 2.54 cm, left 1.90 cm and right 1.90 cm (in centimeters).

#### **REFERENCES (UPPERCASE, JUSTIFY, BOLD, FONT BOOK ANTIQUA 11)**

The use of the bibliography using the format (name, year) refers to the American Psychological Association (APA Format 6th Ed) and reference management is recommended using the Mendeley application. Using the most recent references for the last 10 years, referrals from JKWGI are highly recommended. Articles use a minimum of 20 references. (Book Antiqua, 11 pt).