

Scaling Commander in Chief to Esdeath

Firstly, being able to contain the amount of power CiC provides without exploding and without experiencing discomfort is already a durability feat itself. People have used similar feats for Megaman X containing enough power to destroy Japan, and this is pretty much the same thing. That alone should give Esdeath a decent advantage since it's far beyond anything Gray can dish out, and would pretty much guarantee she should have time to enact any plan she wants. The whole "kill before transform" argument doesn't really work here (or in most situations for that matter).

The concept of compartmentalizing the amount of power she used to perform her storm feat, is also a little confusing to us? Essentially people have argued that we should measure the amount of power Esdeath creates over 3 days on a per-second basis.

We know the "amount" of energy Esdeath can potentially 'store' reaches into the peta or exatons. We also know that she can use that amount of energy all at once in a single move. The show used a triple digit petaton yield, though that's a low-end that assumes the storm only covers the portion of the planet that's shown on the panel, when it should actually cover the other side as well. The highest number we had was actually 2 exatons. We might have pushed more for that version if we knew how debated this episode would be, but figured the petaton yield was enough to prove our point. The highest we've seen the feat scaled for anyone was 16 exatons. So "hypothetically", even measuring this on a per-second basis, Esdeath would match and surpass Gray within a 1-10 second period. At max it would be like 120 teratons a second. The idea of assuming she can use at least 1% of her CiC's power yields similar gaps.

Measuring it on a per-second basis doesn't really make sense though. Esdeath mentions her powers recharge themselves on a daily basis. Specifically that her time stop "drains her energy reserves" so much, it can only be used once a day. It's not really just a matter of a consistent rate she can charge and output her power, but a set amount she can draw from in a daily period.

<https://media.discordapp.net/attachments/302612367521349642/687525093944852510/image0.jpg?width=792&height=567>
<https://media.discordapp.net/attachments/302612367521349642/687525127079985230/image0.jpg?width=388&height=567>

Based on that, it's simpler to just factor in the 3 days it took her to make the ice army that fueled the storm by dividing the result by 3. I.E, giving her how much power she has on a daily basis, rather than over a few day period.

And if we're really going to get semantic we could just divide the storm feat by the amount of ice soldiers who were fueling it, to get the amount of power each one contains. Clearly Esdeath should be superior and contain more power than one of them. There were supposed to be 10s of thousands of ice soldiers, so a safe lowball would be 100,000.

2 exatons= 20 teratons per soldier
16 exatons=160 teratons per soldier

Even if we only gave Esdeath, say, a small battalion to start in the fight, which is fair enough given they are something she regularly uses and takes with her on military operations, or heck, just accounted for the amount of soldiers she could make in a minute, that would still be more than enough power to draw on and outpace Gray pretty quickly. Assuming she makes 33.3 thousand over 12 hours in one day, that's like .77 soldiers per second and almost 50 per minute. And reasonably speaking, she should probably have much more power than several of them, and be several times stronger than Gray to start.

We've also heard the amount of soldiers she had could have been a little as 10,000, since Tatsumi's army apparently had around 100,000 people in it and the ice army was outnumbered 10 to 1. That increases the gap even further. To 200 teratons or 1600 teratons per-soldier.

Esdeath storing energy doesn't count as a feat, because humans store more energy than they can actively use in an attack.

First off, even if we get semantic on if storing energy is a feat, and if Esdeath can put all that energy towards an ability (she did), the amount of calories contained in an average [human body](#) is only around 120,000 calories, which, converted to joules, is significantly less than even a single ton of TNT. In the same way most people scale internal durability to exterior damage a character endures, the margin for error and the considerably larger energy yields of these feats generally make arguments like these moot.

Secondly, Esdeath didn't just contain and store the energy in herself. She used it to create the storm. It's how we got the yield in the first place. The notion that she can't use CiC's power in the form of an attack is silly because... She did exactly that.

Thirdly, the ice storm created by CiC wasn't even the entirety of the power Esdeath was afforded with CiC. She still had loads of power leftover after it, as evident in her fighting against Akame, Tatsumi, and an entire army after the ice storm. This, once again, would more than make up for the margin of error, because she was able to contain the energy in that storm, and then some.

Fourthly, magic and most metaphysical 'energy' sources in fiction don't necessarily follow conventional rules of, say, the human body and how it manages calories. Magic and other such energy sources are typically separate altogether, and by their very nature of being supernatural and superhuman concepts, ignore the Law of Conservation of Energy. Reasonably speaking, Esdeath should be able to tap into the entirety of her magic reserves. The same way Dragon Ball characters can access the entirety of their ki reserves, or heck, the way Fairy Tail characters regularly use up all of their magic reserves, and still remain alive (albeit, exhausted).

Lastly, funnily enough, even if we took this argument at face value, and assumed Esdeath could not harness CiC's power in the form of an attack (even though, again, she did exactly that), the yield would still come out higher than Gray's AP.

120,000 calories is about 502080 joules of energy. The strongest punch on record for an ordinary human (or an 'attack' they can generate) is 1008 joules.

$$502080 / 1008 = 498.095$$

So, if we follow this argument's logic to its natural conclusion, Esdeath's attacks should be 498.095 times less powerful than the ice storm she created (the notion of which makes no sense whatsoever, but let's roll with it).

2 exatons divided by 498.095 would give a yield of...

4.01 petatons

And 16 exatons would be....

24 petatons

Still way above Gray's meteor feat and anything he scales to without doing some ludicrous highballing (we'll get to that later).

The point of all of this is that we can't just ignore CiC. Especially if we know it gives Esdeath an advantage in terms of stats that Gray can't overcome. We can debate the method used to approach the ability, but most methods are going to give her an advantage in the long run. We also can't write it off as an outlier or a one time thing.. It's literally situated around the final fight in the series. It has to be quantified in some form.

She would also most likely use this trump card before using her time stop. As this is the order she used them in the manga.

Does CiC scale to Esdeath's attack power?

CiC's power most likely correlates to Esdeath's attack power. Yes it is true nobody immediately died from the storm in the manga, but this was intentional on Esdeath's part. She wanted to plunge the continent into a nuclear winter to demoralize her opposition and create a survival of the fittest situation. The storm itself is pretty much her just creating tons of ice, and expelling it at high speeds, which is both a freezing and kinetic energy feat that should be able to apply to her other ice attacks. Esdeath also switches between physical and ice attacks during the final fights of the manga/anime, and neither are portrayed as less deadly than the other.

Does she need to make her soldiers to use it?

She shouldn't actually have to make the soldiers to make the storm, or do whatever she wants to do with the ability. The soldiers already contain her own power. Making a soldier and absorbing it back in the course of a single fight is just the equivalent of giving something a portion of your power and then immediately taking it back. There's no real net change in energy reserves. In the manga the reason why this is important is because she absorbs "several days" worth of soldiers to get more net energy than she would have in a single day. Since the power is all coming from her anyway, she should be capable of using any of the abilities CiC has, just on a smaller scale, with a single day's worth of energy.

Does she need to use a storm with the ability?

She doesn't have to put that energy towards making a storm. She makes a storm in the manga for a specific reason as mentioned above.

Can she use it one on one?

There's no reason why she can't put that energy towards other ice attacks if she desires. There's also no rule against using the ability in a one on one fight. Esdeath doesn't reveal she has CiC until the final moments of the manga, so she can use it as a way to catch the heroes off guard. There's nothing in the move, or description of the move, that necessitates that she fights a group of enemies before activating it.

Invel Storm Feat

Yeah, we're gonna be honest. This feat is pretty janky and doesn't really amount to anything. There's literally nothing confirming that Invel covered all of Fiore with a storm. We just gave the benefit of the doubt, and assumed it did, then factored in Fiore being 1/20 of its normal size at the time to compensate. Even then, we only got Island Level. If Fiore were its normal size at the time, it would probably be Country Level. Which would make good corroborating evidence for the meteor feat, but Gray's best feat he can scale to is still said meteor feat. This is kind of a big deal, given a lot of people who sided with Gray did so because of this feat.

You could just as easily assume the storm only reached the horizon, similar to what we did with All Might's storm feat, and Mob gathering clouds. And quite frankly, that result would probably be more accurate, and require fewer presumptions.

Power Replenishing Moves and Gray Manipulating Esdeath's Ice Attacks

Gray's ability to eat ice and snow is a nice advantage. That being said, Esdeath has large enough reserves after using CiC and that it doesn't matter much in the long run. The difference in power is lopsided towards her and she's unlikely to run out of power without outside influence.

And while Esdeath is a psychopath, she isn't dumb when it comes to fighting. If she saw Gray eating or manipulating her ice attacks, she would just stop using them and resort to physical attacks. Which are just as deadly and powerful as her ice magic.

Gray also can't exactly absorb the full power of a continent-spanning storm exploding in his face, just given the sheer distance and AOE of the snow in this move. We also don't think it's likely he can "absorb" Esdeath's time stop since that move is vague in how it works, and doesn't actually ice over anything when activated.

And Esdeath can obviously survive the effects of her ice attacks thrown back at her at least a few times if she needs to, since they scale to her. Esdeath intentionally killing herself with her powers in the non-canon anime isn't a good argument for Gray just controlling her abilities and oneshotting her.

Gray Vs. Invel and Devil Slayer's Ice Immunity

So, we're aware that Gray's father called the Devil Slayer form 'immune to ice attacks'. However, when Gray fights Invel later in the series, he's still overwhelmed by and feels the effects of Invel's ice magic, even when in Devil Slayer form. Which would imply a limit to what kind of ice attacks he can endure.

He explicitly mentions feeling Invel's cold while in Devil form in the manga

https://s6.mkkkcdnv6.com/mangakakalot/r1/read_fairy_tail_manga_online_for_free/chapter_498_gray_vs_invel/13.jpg

He says outright he's in danger of being frozen by him while in Devil form in the anime

<https://youtu.be/9OT1pJLcGF4?t=257>

He isn't immune to ice lock, which is technically an ice spell

https://s6.mkkkcdnv6.com/mangakakalot/r1/read_fairy_tail_manga_online_for_free/chapter_498_gray_vs_invel/19.jpg

Invel's True Ice Kamui also has special properties that can specifically bypass ice resistance

https://s6.mkkkcdnv6.com/mangakakalot/r1/read_fairy_tail_manga_online_for_free/chapter_500_fire_and_ice/14.jpg

In the Dub <https://youtu.be/Be1Ltsc3xUw?t=260>

In the Sub <https://youtu.be/gfsGKKbUtWA?t=476>

Point is that Gray did in fact feel the power of Invel's ice magic, even when he went into his Devil Slayer form. It also wasn't just the True Ice Kamui (which has special properties), his Slayer form was taxed by his normal ice magic as well. He outright says this before Invel makes his storm. This is what the tab in the ep is referencing.

"It's cold, almost cold enough to freeze me"

Additionally Invel being a “pure ice mage” is referring to the fact he focuses just on freezing, rather than ice magic variants like molding magic. He says this outright to Gray when they meet.

Saying that Gray can shrug off ice magic from anyone, no matter how strong is a big NLF. Granted, on a whole he should still have some degree of resistance to a lot of Esdeath's arsenal. But there's, again, also no reason Esdeath can't resort to just beating him to death with physical attacks if it comes to it.

Scaling

There's probably going to be some contention over scaling Gray to Erza and Esdeath to the Shikoutazer.

We think scaling Gray to Erza is fine. She performed the meteor feat while pretty low on energy. While she's one of the more competent Fairy Tail members, it isn't implied she's massively above Gray. We've also heard some events in the 100 Years War imply he's grown stronger than Erza was during the meteor feat. The episode itself also does mention scaling to Natsu, but this is for feats performed by him at an earlier point in the series. Not necessarily the strongest form he's ever had, so it's also fine.

Esdeath at the very least is pretty heavily implied to still be a threat to Tatsumi in his 3rd form, who had been fighting Purge Mode Shikoutazer. Yeah, he couldn't win at that point, but he still took tons of direct hits and punishment, without Shikoutazer holding back. We also know for sure she scales to his mode 4 after using CiC, since she easily one shot him. CiC was also outright stated to be stronger than the Shikoutazer. A CiC powered by a single day's worth of power shouldn't be far below either, and it's unlikely she's 100s of times weaker than both just because she didn't get a chance to fight either before using CiC.

https://s7.mkkkcdnv7.com/mangakakalot/r1/read_akame_ga_kill_manga/chapter_74_kill_the_emperor/34.jpg

https://s7.mkkkcdnv7.com/mangakakalot/r1/read_akame_ga_kill_manga/chapter_74_kill_the_emperor/36.jpg

We're also going to point out that if you think we put the crater feats too high in the episode, a lot of people will also say we put the meteor feat for Erza too high as well, due to not lowballing the meteor speed as it entered the atmosphere (granted we think those were too lowballed). Current calcs for the Shikoutazer on sites like VS. Battles Wiki have yields ranging from double to triple digit teratons, while the meteor feat is currently capped at triple digit gigatons. That's a difference of over 100x.

Devil Slayer Vs. Esdeath

Gray's powers are "super effective" against demons. But Esdeath's powers are demonic in name only. Traditional demons don't exist in the Akame Ga Kill universe. The Danger Beasts that Teigus are forged from are natural, albeit, often deadly creatures.

Gray vs Time Freeze

There's no real way to quantify this, because "freezing" time isn't something that's scientifically possible. The closest would be halting the molecular motion of objects, via low temps. But saying Esdeath's Mahapadma does this is speculative at best. And Gray has never come in contact with an ice move that creates these effects.

The most we can do is compare Gray to another character whose powers adapted to counter Esdeath's abilities. Tatsumi was only able to move in Esdeath's frozen time for a brief moment. His armor has a reactive evolution ability, and therefore specifically adapted to counter Esdeath's cold and timestop. If we had similar characters like Mitsuru, we would also be unsure about having them just no-sell the timestop solely due to having "ice immunity" in their universe.

Anyway, a brief moment of movement in the timestop isn't enough to give Gray a huge advantage. It would still be more than enough time for Esdeath to get in a quick kill. In the anime (which splits into a non-canon senario) Akame gets around the time stop by using an afterimage to distract Esdeath, but she only knew to do this because she had prior knowledge on Esdeath's abilities.

Tatsumi also was only able to take advantage of his resistance the first time he displayed it because Esdeath wasn't focused on him. The second time when he tried a sneak attack, Esdeath just countered and nearly killed him. Esdeath can sense killing intent, the location of her enemies, and might even suspect Gray has ice resistance based on his moveset. It would be a lot harder for Gray to counter the move when he doesn't know about it first.

It's also worth noting that Esdeath was able to use the Mahapadma on herself. It's how she temporarily halts Akame's poison in her blood. Meaning it in all likelihood works on ice users in Esdeath's tier of power, let alone one considerably beneath her.

You can either think of the time stop as a hax or an AP based skill. If it's a hax, then Gray has never resisted a time stop before ([Ultar's time stop doesn't work on living things](#)). If it's based on AP then Esdeath is already many times stronger than Gray and Gray has both felt coldness from weaker characters like Invel, and has never had to endure coldness that can freeze time/space itself. It's unlikely no matter how you break it down that he would be able to no-sell it or even resist it to the same extent as Tatsumi did. Saying that any character with any degree of ice resistance can no-sell Esdeath's timestop is extremely speculative, and doesn't hold up when you think about what that would entail, or even just look at how well Tatsumi handled it.

To bring back an old example: If I was wearing a parka, which is cold resistant, I'm pretty sure the Mahapadma would still work on me.

Iced Shell

This is Gray's best chance of victory. That being said, it is essentially a desperation move. Esdeath might save her trump cards for when she needs them, but Gray won't use this unless he's on his last legs and has no other option. Esdeath's time stop is a better trump card, even if it only lets her get a leg up for a few seconds, and even if Gray can move in it for a brief moment (he probably can't). The power difference is large enough that it would likely guarantee she can get a single killing strike in. She'd also be way more likely to use it first, since, you know, it doesn't kill her.

As for the Iced Shell's actual effectiveness, even assuming Esdeath can't just evade it with her timestop, it being able to hold her is kind of questionable. The energy deteriorating aspect of the attack, over an extended period of time, would probably work. If Esdeath were to be permanently trapped in the ice, she would likely go the way of Delorah, and get dusted after a while, or just die from a lack of sustenance.

However, this is all assuming the ice can hold her. Given the difference in power, it really shouldn't. The ice created by the Iced Shell is obviously powerful, but there isn't a reliable way to determine how much more powerful it is from Gray's regular ice. The closest would be a statement that the Lost Iced Shell is hundreds of times more powerful than the regular Iced Shell (which does imply the move has some limitations btw). Which is great and all, but Esdeath's power should be over 1000x greater than Gray's. And claiming the Iced Shell can't be broken just because it never has been broken (outside of a special seal/release spell) is a huge NLF.

Even Zeref, at his strongest, may have been around 1.4 pentatons if you scale his Fairy Heart Form to Etherion (which could be debated). Which is considerably less than Esdeath's daily power, especially with the high end storm calcs. Gray at most tried to use a Lost Iced Shell against a weaker Zeref. He also, again, won't use this move until near the end of the fight, if you still want to argue about Esdeath needing to take time to charge her abilities.

Overall, the Iced Shell is a much less effective trump card than the Mahapadma, and even assuming Esdeath couldn't timestop out of it, she could probably just break her way out if it came down to it.

High Balling the Meteor Feat

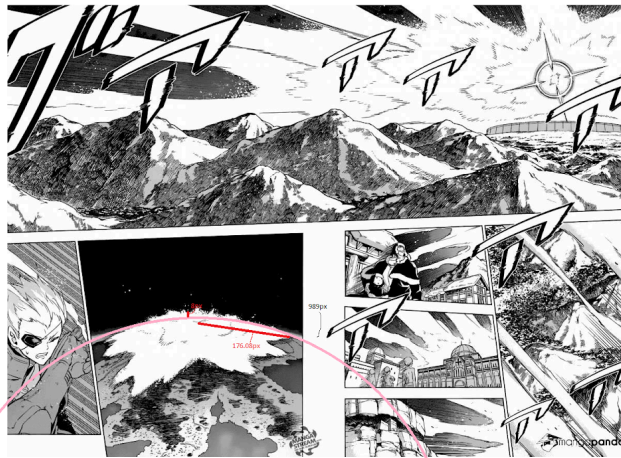
I've seen some argue the meteor feat can get exaton results in the anime. Via cloud dispersion in this scene.



To be honest, we have not used this screen for calcs, as it's very contradictory to the size of the meteor shown later in the same episode, and the manga it's adapting. The anime also contradicts the idea of the meteor having dispersed these clouds in the next scene, where there are clearly clouds in the sky.

13:05 <https://youtu.be/g9hYsY3Erlo>

If you wanted to make a “somewhat implausible” high end for Esdeath, you could totally do so by just doing a freezing calc for her CiC ice storm. She is technically just creating and spreading tons of snow globally.



Earth=989px=12,742 km

1px=12.88km

Snow height= 8px=103.06km

Storm radius=176.08px=2243611.36km

<https://www.omnicalculator.com/math/cylinder-volume>

1,629,803,594,893,086,903,986,173,826,688 cc

Next, we'll use this formula: $E=mc\Delta t$ (where E =energy, m =mass, c =specific heat capacity, and Δt =change in temperature) to determine how much energy is being used in this attack. First, let's get the mass.

Density of snow: 0.8 g/cm^3

$1.3038429 \times 10^{30} \text{ g} = 1.30 \times 10^{27} \text{ kg}$

Now the element we're going to be using here is nitrogen, seeing as that is what composes 70% of air.

Mass of icicle = $1.30 \times 10^{27} \text{ kg}$

Specific heat of nitrogen: 1040 j/kg

Freezing point of nitrogen: -210 C

Melting point of nitrogen: -196 C

Temperature (assume average room temperature): 21 C

Since the nitrogen is turning from a gas to a liquid and then from a liquid to a solid, we're also going to need to find out its fusion energy and vaporization energy, and both separate temperature changes between forms of matter. Then, we'll just add 'em all together!

$$Q1 = (1.30e+27 \text{ kg})(1040\text{j/kg})(-196-(-210)) = 189280000000000000000000000000 \text{ j}$$

$$\text{Fusion energy nitrogen} = (\text{Mass of nitrogen})(\text{Latent heat fusion}) = (1.30e+27 \text{ kg})(25702\text{j/kg}) = 334126000000000000000000000000 \text{ j}$$

$$Q2 = (1.30e+27 \text{ kg})(1040\text{j/kg})(21-(-196)) = 293384000000000000000000000000 \text{ j}$$

$$\text{Vaporization energy nitrogen} = (1.30e+27 \text{ kg})(199190\text{j/kg}) = 258947000000000000000000000000 \text{ j}$$

$$\text{Energy: } 189280000000000000000000000000 + 334126000000000000000000000000 + 293384000000000000000000000000 + 258947000000000000000000000000$$

$$= 6.046716e+32 \text{ joules}$$

$$= \mathbf{144.51998087954109451 \text{ zettatons of tnt}}$$

Even assuming it's only 4m high, that's a volume(and therefore weight) of about 25.76x less. So **5.60 zettatons**

Point is, if you want to inflate the yield of the meteor feat, you can do the same for the ice storm, and it will still end up being the higher of the 2. This calc is also way less of a stretch between the two, given technically speaking, freezing calcs should be viable options. I've even seen people get higher than even this using it.

Natsu Absorbing Energy From Etherion

Etherion is a weapon that can "destroy a country". Some bad guys in one arc use it to transfer power from this weapon into a place called the Power of Heaven. Natsu then eats a small piece of the tower to absorb power and manifest his Dragon Force form. Ergo, people are arguing that Natsu absorbed 1.4 petatons (the calc for Etherion's country busting abilities).

Firstly, when Natsu did this, he initially couldn't actually control it very well. It was a mix of multiple magical properties that caused his Dragon Force form to manifest.

https://manganelo.com/chapter/read_fairy_tail_manga_online_for_free/chapter_98

Natsu also only ate a small piece (like a chip off a small rock) of the Tower of Heaven, and therefore only absorbed a small fraction of the power Etherion had placed in it.

https://manganelo.com/chapter/read_fairy_tail_manga_online_for_free/chapter_97

If we're scaling him to this as a durability feat because he didn't explode, there, again, is no reason why Esdeath can't scale to her own energy absorption feat. This is also a bit different from Esdeath, since Natsu's power has unique properties and didn't originate from himself. CiC isn't a physical or magical transformation that may reasonably have powers/stats relegated to itself. It's more of a technique and is just Esdeath just stacking tons of her own power at once. Nothing about her physical state changes. Dragon Force is more of a physical transformation with its own attributes in the universe and was activated under specific circumstances by sources of energy with special properties Natsu couldn't produce on his own.

It's also worth noting that pretty much every "continent" level placement in Fairy Tail is based around Etherion, and just comparing magical power sources to it. We don't think this a huge issue, but Etherion's feat is just a statement, while Esdeath's storm feat is as direct as you can get, much higher even with lowballs, and RIDICULOUSLY higher if we use freezing highballs.

TLDR

Esdeath is probably just as strong, if not stronger than Gray in base, though he's likely faster. Her ice magic is much stronger than anything he's dealt with, and even if he's completely immune (he isn't), she can just beat him to death with physical attacks. Him being able to absorb or manipulate ice-based attacks isn't going to help in the long run, since Esdeath's reserves are just that much larger, and she's not a moron who will keep trying a tactic that doesn't work. Most calcs when extrapolated also tend to go in her favor, with the only one that can get super high being Invel's storm. Which was pretty much bunk from the get go (Ultra regrets spurring interest in that).

We also can't ignore CiC, which implies her to be just that much stronger no matter how you try to break it down. Especially since handling that much energy should be an endurance feat in itself. Time stop is also a better instant finisher than Iced Shell, and more likely to be pulled out for that matter. If given the benefit of the doubt, Gray might be able to resist somewhat, but probably only for a moment (and even this is unlikely), which won't stop Esdeath from killing him. He could hypothetically plan around the move, or use his speed to put himself at a distance if he knew how the time stop works, but he... Doesn't. So he'd likely be caught off guard. Esdeath's ability to sense opponents and killing intent would also make it hard to trick her with a clone. Yes, Akame did this in the anime, but when Tats tried to sneak attack in the canon manga, it failed. Any other arguments for Gray are typically centered around NLFs.