

## Type the paper title, Capitalize the first letter (16 pt)

First Author <sup>1</sup>, Second Author <sup>2,\*</sup> (10 pt)

<sup>1</sup> First affiliation, Address, City and Postcode, Country (10pt)

<sup>2</sup> Second affiliation, Address, City and Postcode, Country (10pt)

\* Corresponding Author

---

### ARTICLE INFO

#### Article history:

Received July 28, 2021

Revised August 28, 2021

Accepted September 28, 2021

#### Keywords:

Arduino;

Sensor;

Controller;

Actuator;

Robot;

Power

---

### ABSTRACT (10 PT)

The Abstract should be 200 to 300 words in length. The abstract should be written in the past tense. Standard nomenclature should be used, and abbreviations should be avoided. No literature should be cited (9 pt).

**Please write the problem (2-3 sentences),**

**Solution (1-2 sentences),**

**Research contribution (1-2 sentences),**

**Method (2-3 sentences),**

**Result (4-8 sentences) and**

**Conclusion (1-2 sentences).**

Copyright © 2022 by Authors

This work is licensed under a [Creative Commons Attribution-Share Alike 4.0](https://creativecommons.org/licenses/by-sa/4.0/)



---

#### Cite Article:

F. Author and S. Author, "Type the paper title, Capitalize the first letter," *Indonesian Community on Optimization and Computer Application*, vol. 1, no. 1, pp. xx-xx, 2022, doi: .

## 1. INTRODUCTION

Authors are suggested to present their articles in the section structure: **(1) Introduction, (2) Methods, (3) Results and Discussion, (4) Conclusion**. Margins, column widths, line spacing, and type styles are built-in; examples of the type styles are provided throughout this document and are identified in italic type, within parentheses, following the example. The paragraph is single space, no spacing before and after.

**The research background is**

**The related work from the past research is as follow**

**The research contribution is**

## 2. METHODS

In this section, you should explain how the research was conducted, including research design, research procedure (in the form of algorithms, Pseudocode, or other), how to acquire the data, and how to perform any test. The description of the course of research should be supported by references, so the explanation can be accepted scientifically.

### 2.1. Subsection 1

This is how to start a subsection

2.2. Subsection 2

This is how to start another subsection

3. RESULTS AND DISCUSSION

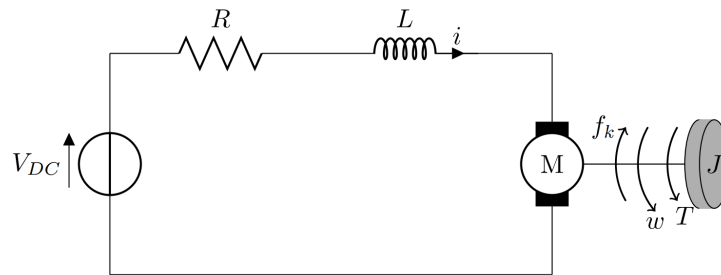
In this section, the results of the research are explained and, at the same time is given a comprehensive discussion. Results can be presented in figures, graphs, tables, and others that make the reader understand easily. The discussion can be made in several sub-chapters. It is strongly suggested that comparison with results from other published articles are provided to give more context and to strengthen the claim of novelty.

3.1. Figures and Tables

Positioning Figures and Tables: Place figures and tables at the top and bottom of columns. Avoid placing them in the middle of columns. Large figures and tables may span across both columns. Figure captions should be below the figures; table heads should appear above the tables. Insert figures and tables after they are cited in the text. Use the abbreviation “Fig. 1,” “Table 1,” even at the beginning of a sentence.

**Table 1.** Table Styles

| Table Head | Table Column Head    |                 |                 |
|------------|----------------------|-----------------|-----------------|
|            | Table column subhead | Subhead         | Subhead         |
| copy       | More table copy      | More table copy | More table copy |
| copy       | More table copy      | More table copy | More table copy |
| copy       | More table copy      | More table copy | More table copy |



**Fig. 1.** Example of a figure caption

Figure Labels: Use 10 point Times New Roman for Figure labels. Use words rather than symbols or abbreviations when writing Figure axis labels to avoid confusing the reader. As an example, write the quantity “Magnetization,” or “Magnetization, M,” not just “M.” If including units in the label, present them within parentheses. Do not label axes only with units. In the example, write “Magnetization (A/m)” or “Magnetization (A ( m(1),” not just “A/m.” Do not label axes with a ratio of quantities and units. For example, write “Temperature (K),” not “Temperature/K.”

3.2. Equations

Equations should be written using Insert equation. Do not use an image for any equation, as the quality will be degraded during the production of the pdf version. The equation should be numbered consecutively. The number is put on the right side. Do not forget to explain any variables or parameters in the first use, especially under the equation. The sample of the equation is as follow:

|  |               |     |
|--|---------------|-----|
|  | $2a + 2b = c$ | (1) |
|--|---------------|-----|

Where  $a$  is the length,  $b$  is the height, and  $c$  is the area.

Note that the equation is centered using a center tab stop. Be sure that the symbols in your equation have been defined before or immediately following the equation. Use “(1),” not “Eq. (1)” or “equation (1),” except at the beginning of a sentence: “Equation (1) is ...”.

3.3. Bibliography and citation in text

The organization and citation of the bibliography should use IEEE style in numbers, just like [1, 2] or [3-7]. The use of any reference manager tools (e.g., EndNote, Mendeley, Zotero etc.), is allowed. Each citation should be written in the order of appearance in the text. The reference style should follow the template, as shown in the Reference section at the end of this file. The main references are international

journals. All references should be to the most pertinent and up-to-date sources. All references should appear in the text. Avoid unreliable internet websites (Wikipedia/blogs/news) as a reference at all. Please use a consistent format for references.

#### 4. CONCLUSION

Provide a statement that what is expected as stated in the "Introduction" chapter can ultimately result in the "Results and Discussion" chapter, so there is compatibility. Moreover, the authors can elaborate on the prospect of the development of research results and inspire further studies (based on results and discussion).

#### DECLARATION

##### Supplementary Materials

The following supporting information can be downloaded at: [www.mdpi.com/xxx/s1](http://www.mdpi.com/xxx/s1), Figure S1: title; Table S1: title; Video S1: title.

##### Author Contribution

All authors contributed equally to the main contributor to this paper. All authors have read and agreed to the published version of the manuscript.

##### Funding

Please add: "This research received no external funding" or "This research was funded by NAME OF FUNDER, grant number XXX" and "The APC was funded by XXX".

##### Acknowledgments

In this section, you can acknowledge any support given which is not covered by the author contribution or funding sections. This may include administrative and technical support, or donations in kind (e.g., materials used for experiments).

##### Conflict of Interest

Declare conflicts of interest or state "The authors declare no conflict of interest."

#### REFERENCES

The minimal references must be 30 from a journal that was published 5 years ago. It must be from the Science Direct database [www.sciencedirect.com](http://www.sciencedirect.com), IEEE Digital Explore [ieeexplore.ieee.org](http://ieeexplore.ieee.org) or Scopus Database [www.scopus.com](http://www.scopus.com).

**Don't use the references from Bahasa Indonesia journal, book, report, thesis and website (blog, wopress, wikipedia)!**

- [1] H. I. K. Fathurrahman, A. Ma'arif, and L.-Y. Chin, "The Development of Real-Time Mobile Garbage Detection Using Deep Learning," *Jurnal Ilmiah Teknik Elektro Komputer dan Informatika*, vol. 7, no. 3, p. 472, 2022.

**For review paper, the minimal references is 60 from a journal that was published 5 years ago.**