

# League Lottery Schedule and Process 2024-2025

[Summary](#)

[Expected Payments](#)

[League Lottery Schedule](#)

[League Lottery Flow Chart](#)

[Step by Step Guide to Registration & League Lottery Sign-Up](#)

[Step by Step Guide to Updating Lottery Preferences After Sign-Up](#)

[Step by Step Guide to Payment After Lottery](#)

## Summary

The Potomac Curling Club (PCC) will continue to use a league lottery for the league registration process. Key points are summarized below and additional details are included after the schedule:

- Players can register at any time during the lottery window with no impact on lottery outcome. There will be only one lottery sign up window. All lotteries will be performed after the sign up window closes.
- League membership is determined by random lottery based on ranked preferences for all leagues except for Capital League.
  - For Team-entry leagues, teammates must rank the league at the same preference and must list teammates in the “Notes to Coordinator” section. If you do not rank the league at the same preference, you may not all get in.
  - Capital League IS NOT part of the lottery.
- When registering, members will first select the number of leagues desired (*excluding* Capital League) and then rank preference of selected leagues for the lottery.
  - Members will get into a maximum of the number of leagues selected in the first drop down box.
  - EXAMPLE: You would like to play in 3 leagues. Select 3 from the drop down. Then select your first, second, and third preferences for the leagues. You may select additional league preferences to maximize the opportunity to get into up to three leagues. You will be placed into a maximum of 3 leagues during the lottery, assuming space is available based on your preferences.
- Confirmed league coordinators (one per league) must rank the league as your first or second choice to be guaranteed a spot.

## Expected Payments

In the pay-per-league membership system (e.g., base fee + league fees) with our league lottery, most members in leagues will need to perform two payments each registration half season.

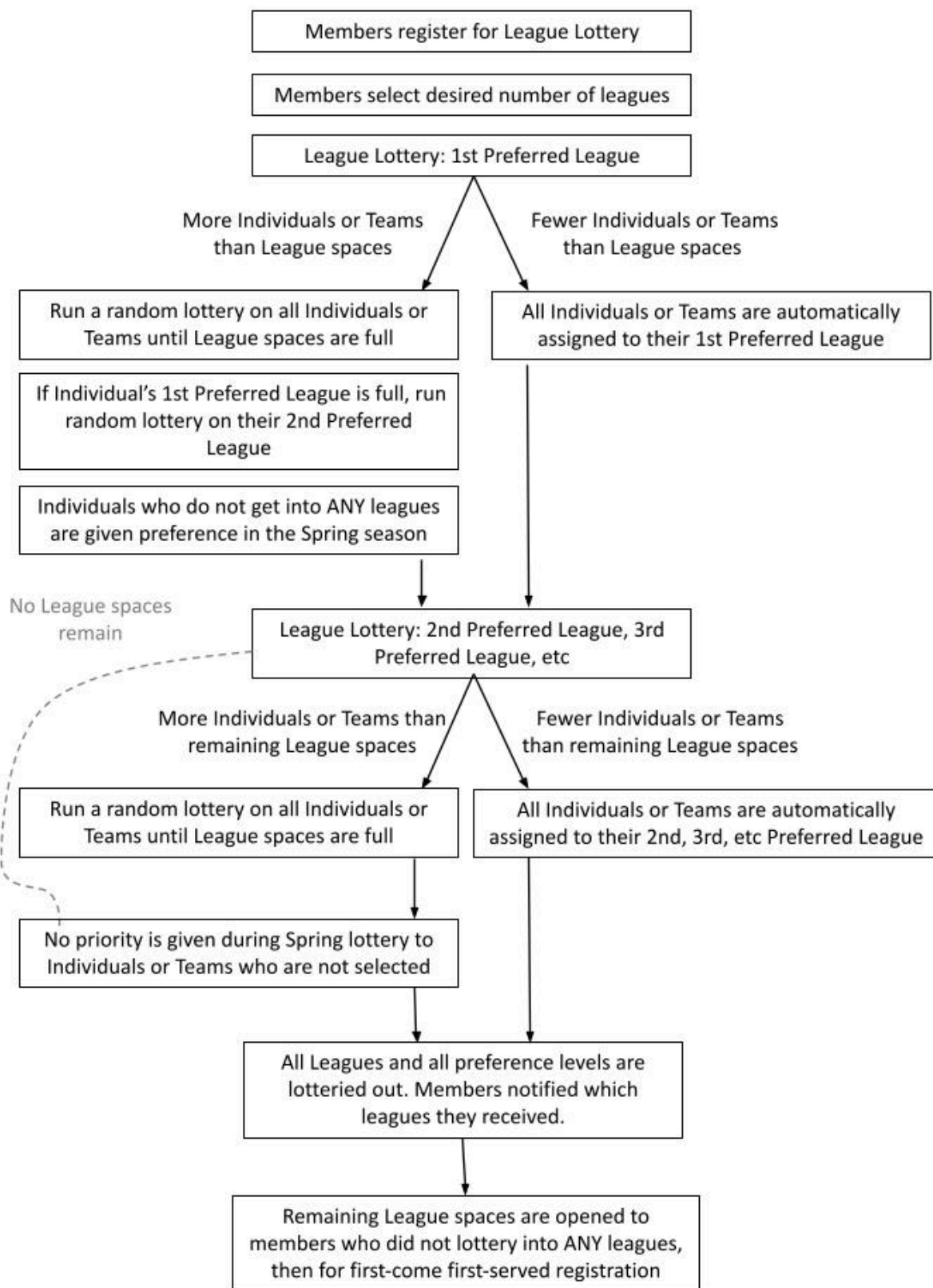
- The first payment is with initial registration where the base fee, add-ons (e.g., lockers) and Capital League fees (for a team’s first registrant) is due.
- The second payment is after the lottery when leagues have been assigned. Members will be asked to log in and reconcile the remaining balance on their accounts.

Please contact Member Services ([MemberServices@g.curldc.org](mailto:MemberServices@g.curldc.org)) if you have questions!

## League Lottery Schedule - Fall

League Lottery Schedule	Fall 2024	
Stage	Start (ET)	End (ET)
Cap League signups (email Nick and Paul)	Sun, Aug 4	Mon, Aug. 19 11:59 pm
Cap League peer seeding	Tues, Aug. 20 noon	Fri, Aug. 23 11:59 pm
Sign-up window for League Lottery, all leagues.	Sun, Aug. 25 noon	Sun, Sept. 1 noon
Payment for Base Membership and Capital League fall rink fees due	Sun, Sept. 1	
Run all League Lottery Preference Rounds	Mon, Sept. 2	Fri, Sept. 6
Member Services announces results of League Lottery and leagues with available spaces; offers spaces to members who didn't get into any league through lottery	Sat, Sept. 7	
Leagues with remaining spaces are open for first-come first-served registration	Sun, Sept. 8 noon	Wed, Sept. 11 noon
Final rosters provided to league coordinators	Thurs, Sept. 12	
Men's/Women's League Drafts	Mon, Sept. 16	
Fall League payments due	Fri, Sept. 20	
League start date (starts with TGIF)	Fri, Sept. 20	
Fall leagues end	Fri, Dec. 20	

## League Lottery Flow Chart



## Step by Step Guide to Registration & League Lottery Sign-Up

This guide is focused on members who are signing up for the league lottery. Those interested in Youth Program, College Program and Social Memberships should use the standard directions. If anything described below doesn't work right, please contact Member Services and Technology ([MemberServices@curldc.org](mailto:MemberServices@curldc.org) and [Technology@curldc.org](mailto:Technology@curldc.org)) so we can fix it!

### 1. Fill out Contact Details, Consent Release, and Injury Waiver.

### REGISTRATION FORM FOR THE 23-24 Fall SEASON

Enter registration details

Note that all required fields are marked with \*\*

Reset Form

Validate Registration and Calculate Fee

#### Contact Details

First Name: **	Middle Name:
<input type="text"/>	<input type="text"/>
Last Name: **	Gender: **
<input type="text"/>	<input type="text" value="Man"/>
Address: **	City: **
<input type="text"/>	<input type="text" value="Laurel"/>
Province/State: **	Postal/Zip Code: **
<input type="text" value="Maryland"/>	<input type="text"/>
Home Phone: **	Mobile Phone:
<input type="text"/>	<input type="text"/>
Member Since: **	Work Phone: Ext.:
<input type="text" value="2023"/>	<input type="text"/>
Years Curling Experience: **	
<input type="text" value="0"/>	
Email: (Enter your own email address to test the registration email.)	
<input type="text"/>	
Please enter your email address here. Email is the primary method used to communicate with our members and is only used for that purpose. If you do not have an email address please leave this field blank.	
Re-enter Email:	
<input type="text"/>	
Emergency Contact (If youth, enter parent): **	Emergency Contact Phone Number: **
<input type="text"/>	<input type="text"/>
Date of Birth: **	
<input type="text" value="Select Month"/>	<input type="text" value="Select Day"/>
<input type="text" value="Select Year"/>	
Youth members are required to enter their full date of birth including the year. If you want to take advantage of any available age discounts you must enter your full date of birth including the year.	

#### Consent to Release Information, Privacy Policy and Anti-Spam Policy

I hereby consent to the use of the personal information provided above by the Potomac Curling Club administration. Only my name, phone numbers and/or email addresses may be listed in rosters, membership directories and/or member website for general member use. This information is intended for the sole use of the Potomac Curling Club and any curling organization with which the Potomac Curling Club pays a member's dues. Otherwise, this information will not be shared outside the Potomac Curling Club.

☐ I have read the details above and I accept \*\* (Required for all registrants)

### 2. To sign up for leagues and programs, select the "Curling" option and choose your Membership Fee/Category.

### Membership Selections (with leagues)

- ☐ **Curling** - Curling participants take part in leagues, programs & events, use practice ice and volunteer to help support the club.
  - **Regular Membership:** Eligible for all leagues. Full access to all programs, practice ice and club events. Discounts available.
  - **College Program Membership:** At least 18 on June 30. May only participate in the College Developmental program.
  - **Youth Program Membership:** Under 21 on June 30. May only participate in the Youth programs.

Select a membership fee option ▼

#### ☐ **League Lottery:** [League Information page](#)

I want to participate in the League Lottery. The following leagues are part of the lottery:

- **Monday Men's <\$85>** - Mondays 7:15pm or 9:30pm
- **Monday Women's <\$85>** - Mondays 7:15pm or 9:30pm
- **Tuesday Doubles <\$85>** - Tuesdays 7:15pm or 9:30pm
- **Tuesday Social <\$85>** - Tuesdays 7:15pm or 9:30pm
- **Thursday Open <\$85>** - Thursdays 7:15pm or 9:30pm
- **TGIF Early <\$80>** - Fridays 6:30pm
- **TGIF Late <\$80>** - Fridays 8:45pm
- **Pizza League <\$85>** - Sundays 4:45pm or 7:15pm

**If you are participating in the League Lottery, Check the box above for "League Lottery" AND set your league preferences in the "Other Information" section.**

- **For your initial registration the 'Other Information' will be at the bottom of this form**
- **For those looking to update their lottery selections, the 'Other Information' section is found under the 'Member Profile Update' menu and the 'Other' tab.**

- ☐ **Curling** - Curling participants take part in leagues, programs & events, use practice ice and volunteer to help support the club.
  - **Regular Membership:** Eligible for all leagues. Full access to all programs, practice ice and club events. Discounts available.
  - **College Program Membership:** At least 18 on June 30. May only participate in the College Developmental program.
  - **Youth Program Membership:** Under 21 on June 30. May only participate in the Youth programs.

Select a membership fee option ▼

Select a membership fee option

Regular Membership (Membership expires on: 2024-01-07)  
College Program Membership (Membership expires on: 2024-01-07)  
Youth Program Membership (Membership expires on: 2024-01-07)

leagues are part of the lottery:

3. To register for the lottery leagues, check the box for 'League Lottery'. You will make your ranked preferences in the "Other Information" section below.

#### ☐ **League Lottery:** [League Information page](#)

I want to participate in the League Lottery. The following leagues are part of the lottery:

- **Monday Men's <\$85>** - Mondays 7:15pm or 9:30pm
- **Monday Women's <\$85>** - Mondays 7:15pm or 9:30pm
- **Tuesday Doubles <\$85>** - Tuesdays 7:15pm or 9:30pm
- **Tuesday Social <\$85>** - Tuesdays 7:15pm or 9:30pm
- **Thursday Open <\$85>** - Thursdays 7:15pm or 9:30pm
- **TGIF Early <\$80>** - Fridays 6:30pm
- **TGIF Late <\$80>** - Fridays 8:45pm
- **Pizza League <\$85>** - Sundays 4:45pm or 7:15pm

**If you are participating in the League Lottery, Check the box above for "League Lottery" AND set your league preferences in the "Other Information" section.**

- **For your initial registration the 'Other Information' will be at the bottom of this form**
- **For those looking to update their lottery selections, the 'Other Information' section is found under the 'Member Profile Update' menu and the 'Other' tab.**

- Membership types that can select the 'League Lottery' option:
    - Regular Membership
  - Membership types that cannot select the 'League Lottery' option:
    - College Program Membership
    - Youth Program Membership
    - Non-Curling - Social Membership
4. To register for Capital League, check the 'Capital League' box, select your team and position  
Note #1: The first registrant will be charged for the entire team's first half payment. This allows each team with fifths to determine how to fairly distribute the fee.  
Note #2: Selection of Capital League does not influence the league lottery.

☐ **<League - \$900/team/year> Capital League**

Capital League is a *full year (Oct-Apr)*, team entry league playing Wednesdays at 7:15 and 9:30pm.

**NOTE:** Registration for this league is unique. Please observe the following:

- Each team must have already signed-up with the Capital League coordinators. The pull-down contains this list of teams.
- The first member to register for a team selects their team name, selects their position and pays for the entire team for a half season.
- Subsequent members, including fifths, select their team name, select their position and are not charged for the league.
- Although this league is from October to April, *all* Capital League members will register in *both* the Fall and Spring. This helps with the overall club roster and splits the payment into two installments.
- Any team eliminated in the Capital League play-in will be refunded the full team fee after play-in is complete.
- Discounts are available for CL. The Treasurer will reconcile each team's fee based on individual discounts after play-in is complete.

Select your team (first registrant makes team payment) ▼ \*\* AND Select your position ▼ \*\*

5. Indicate interest in any programs. These programs have no bearing on the lottery and you may select as many programs as you would like

☐ **<Program - \$0> Monday Developmental**

Monday Developmental is an instructional program Mondays at 5:00pm. Checking the box will NOT reserve you a spot. It indicates your interest in the program.

☐ **<Program - \$0> Tuesday Matinee**

Tuesday Matinee is an informal drop-in program Tuesdays at 5:00pm. Checking the box will NOT reserve you a spot. It indicates your interest in the program.

☐ **<Program - \$0> Wednesday Daytime Curling**

Wednesday Daytime Curling is a drop-in program playing Wednesdays at 10:00am. Checking the box will NOT reserve you a spot. It indicates your interest in the program.

6. If you wish to purchase a locker, make the selection in the “Additional Options” section:

**Additional Options**

**Locker Options**

Payments are per half season (Oct-Jan | Jan-Apr) and are not discounted. Select only one option below

- ☐ **Locker: Small - \$12.50 (Half Season)** - (15" w x 12" h x 20" d)  
Many small lockers are available! Contact the [locker coordinator](#) for more info.
- ☐ **Locker: Medium - \$25 (Half Season)** - (21" w x 12" h x 20" d)  
For new rentals, please confirm with the [locker coordinator](#) that a medium locker is available.
- ☐ **Locker: Large - \$60 (Half Season)** - (21" w x 58" h x 20" d)  
For new rentals, please confirm with the [locker coordinator](#) that a large locker is available.

7. Select any “Discount Options”, if applicable

**Discount Options**

**Discount Options**

Discounts are only applied to the regular membership base fee and any league fees. Discounts cannot be combined - select only one option. We're committed to building a club without barriers to curling - we don't want financial constraints to stop anyone from curling. If the cost of membership is currently prohibitive for you for any reason, please contact our [Member Services](#) team!

- ☐ **Student Discount (40%)**  
This discount is for full time students and may require verification.
- ☐ **Senior (57+) Discount (20%)**  
This discount is for those over the age of 57 by June 30th.
- ☐ **Lifetime Member Discount (Base Membership Fee):**  
This discount is for PCC Lifetime Members only. Thank you for your support!

8. Move to the “Other Information” section to first answer a few questions.

**Other Information**

Prince George's County Resident \*\* ? ☐ Yes ☐ No

Pronouns ?

U18 Parent-Guardian Contact Email ?

- Designate how many leagues you are willing to play in this season. You are not guaranteed this number of leagues but the lottery will try to place you in as many as possible. Note: You will not be forced to accept any leagues for which you are selected, but we do kindly request keeping your selections to leagues with a real intent to play. This reduces the amount of post-lottery clean-up for our Member Services team.

10. "Other Information" - League Lottery - 1st Choice:  
Select your first preferred league from the drop down.

This indicates if you are willing to assist in league coordination for this league..

- Include teammates if you have any specific you'd like to play with, also include position preferences for individual entries, and any other details for coordinators

- Note: Use the League Choice of 'Select League Lottery - X Choice' or '--None--' when complete. All first league preference choices are given equal weight regardless of the total number of leagues preferred.

14. Submit your registration and pay. This will not include any fees for the leagues (except Capital League) at this time.

## Step by Step Guide to Updating Lottery Preferences After Sign-Up

1. If you need to adjust your league preferences after you have submitted your registration, you can modify your preferences within your Potomac Curling Club profile.
2. Sign into the PCC website, go under Profile+ > Member Profile Update > Other tab



### Modify Your Profile

Contact Info   Membership Info   Other   Spare/Substitute Details

Member Name  
Prince George's County Resident \*\* ? ☐ Yes ☒ No

Pronouns ?

U18 Parent-Guardian Contact Email ?

GNCC\_ID ?

USCA\_ID ?

League Lottery - # of Leagues Desired ?

League Lottery - 1st Choice ?

League Lottery - 1st Choice: Willing to Coordinate? ? ☐ Yes ☐ No

League Lottery - 1st Choice: Notes to Coordinator (Teammates etc...) ?

League Lottery - 2nd Choice ?

League Lottery - 2nd Choice: Willing to Coordinate? ? ☐ Yes ☐ No

League Lottery - 2nd Choice: Notes to Coordinator (Teammates etc...) ?

3. Please remember to Save Changes, when complete.
4. You may make changes on this page until the league lottery registration is closed.

## Step by Step Guide to Payment After Lottery

1. Members will be asked to log in and reconcile the remaining balance on their accounts once leagues have been assigned. Directions for this can be found [here](#).