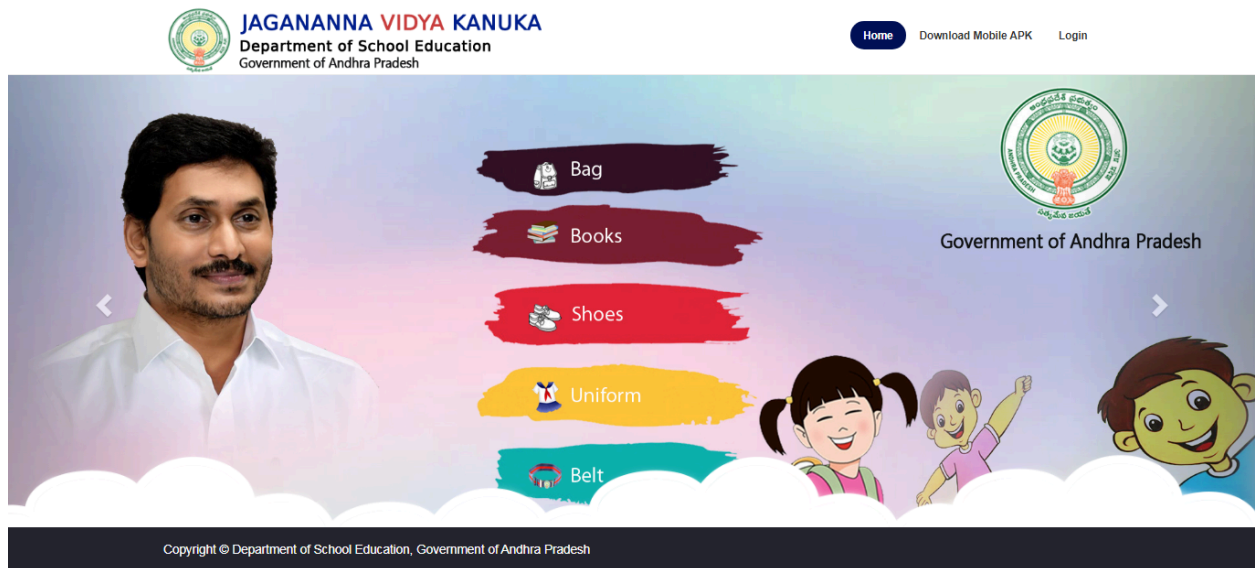


Jagannna Vidya Kanuka:

The Users need to download latest apk from the website:

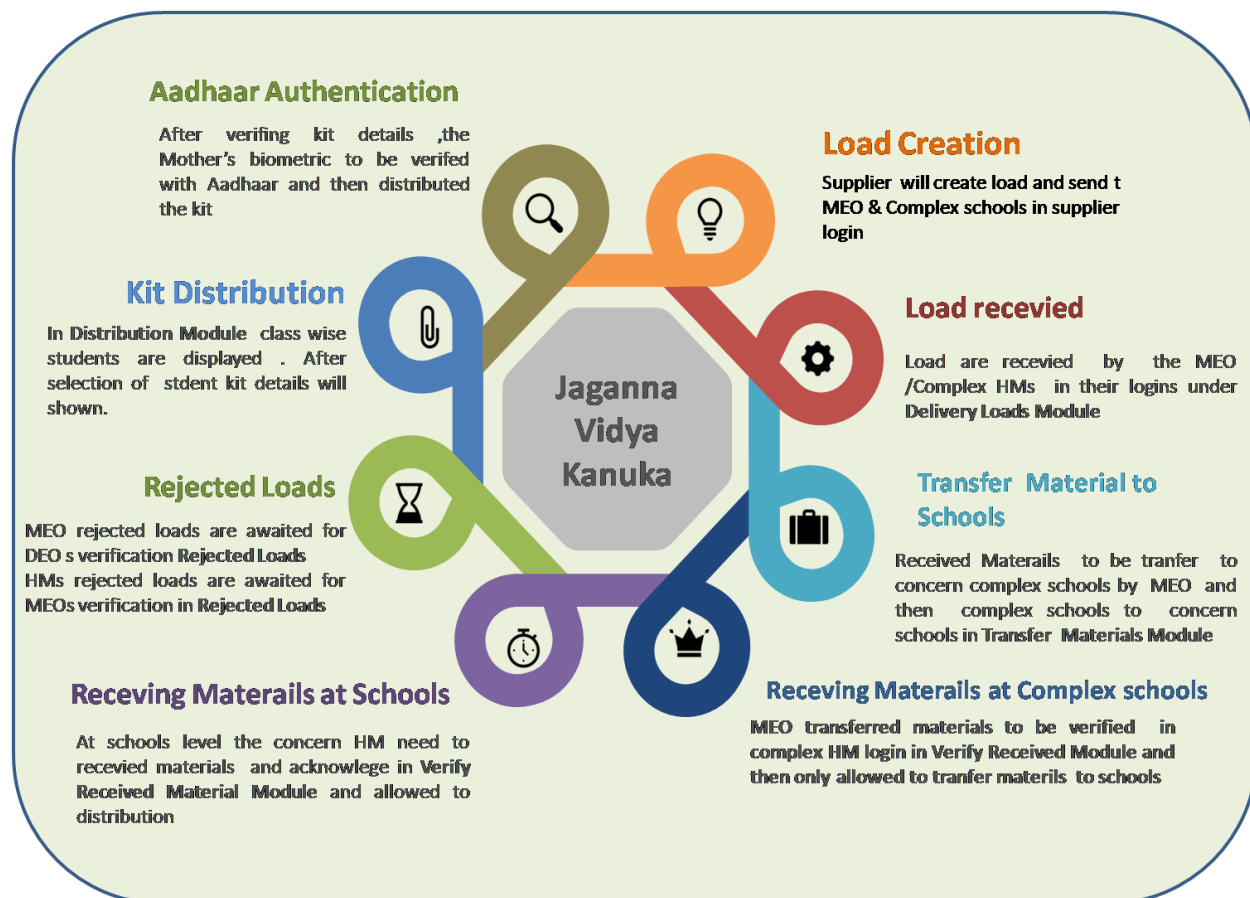
<https://nadunedu.se.ap.gov.in/JVK/> □ Download Mobile APK.



Download the app and install it. After successful installation login screen will displays. Logins are provided to

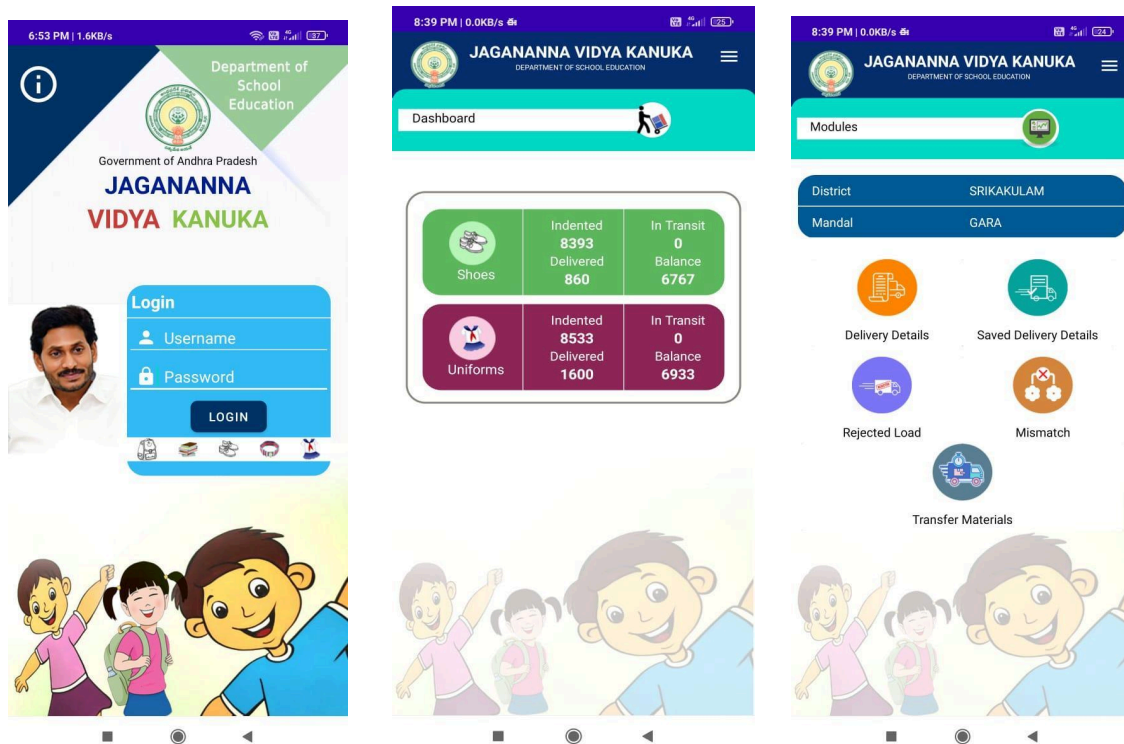
1. Suppliers
2. DEOs
3. MEOs
4. School HMs

The detail flow is like:

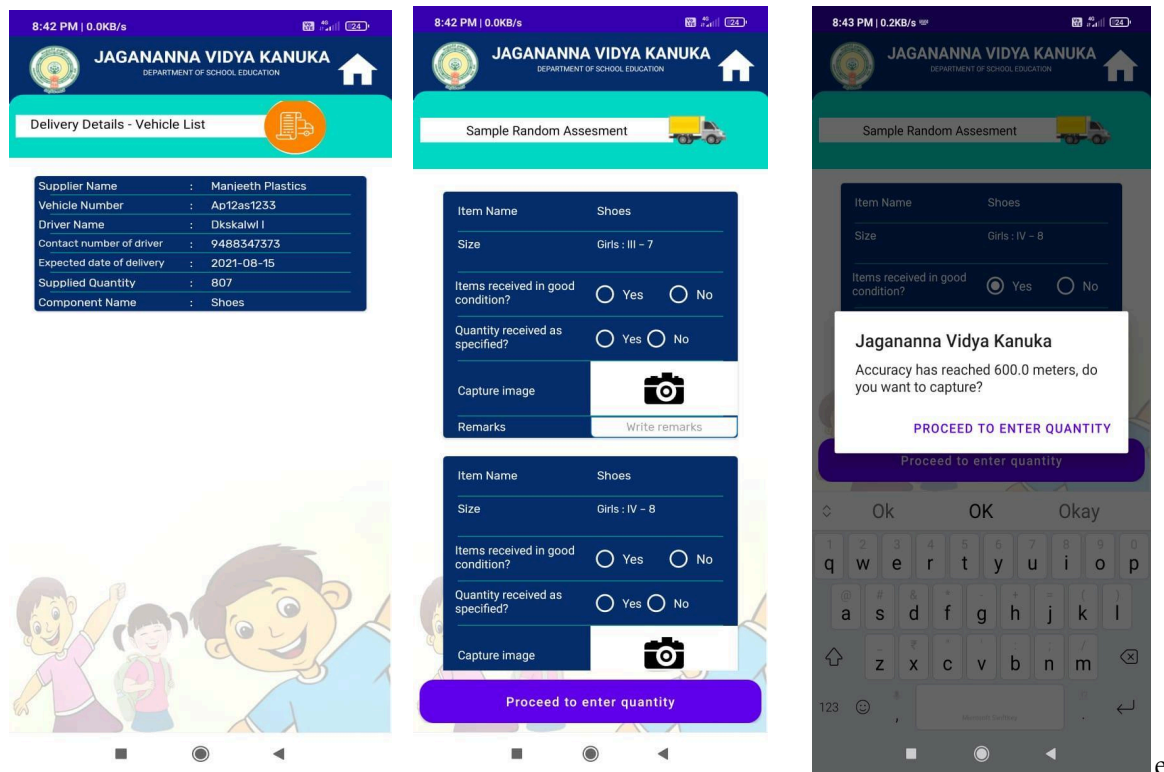


Load Receiving at MEO/Complex HMs:

Enter the login Id and password the dashboard details will show and by click on(=) right side then select Modules



Load receiving in MEO login click on the Delivery details.



Click on the load details, Item wise sample random verification screen will reflected.

- ☐ By selecting yes or no option for good condition , specified, capture image of sample and entering remarks and then click on the proceed button.
- ☐ Enter the received Quantity and then click on proceed button and then capture the image of delivery challan and items and enter remarks, select the received date and then click on save/submit button.
- ☐ If click on save button the load details are saved in saved loads .
- ☐ If click on submit button the details submitted.

8:43 PM | 0.0KB/s

JAGANANNA VIDYA KANUKA
DEPARTMENT OF SCHOOL EDUCATION

Vehicle Number
Ap12as1233

Item Name	Shoes
Size	Girls : III - 7
Quantity Supplied	585
Received Quantity	585
Supplied Boxes	2
Received Boxes	2

Item Name	Shoes
Size	Girls : IV - 8
Quantity Supplied	222
Received Quantity	222
Supplied Boxes	1
Received Boxes	1

Proceed

Capture HM/MEO signed delivery challan

Capture photo of items

Remarks

Write remarks

Received Date

Select date

Save

Submit

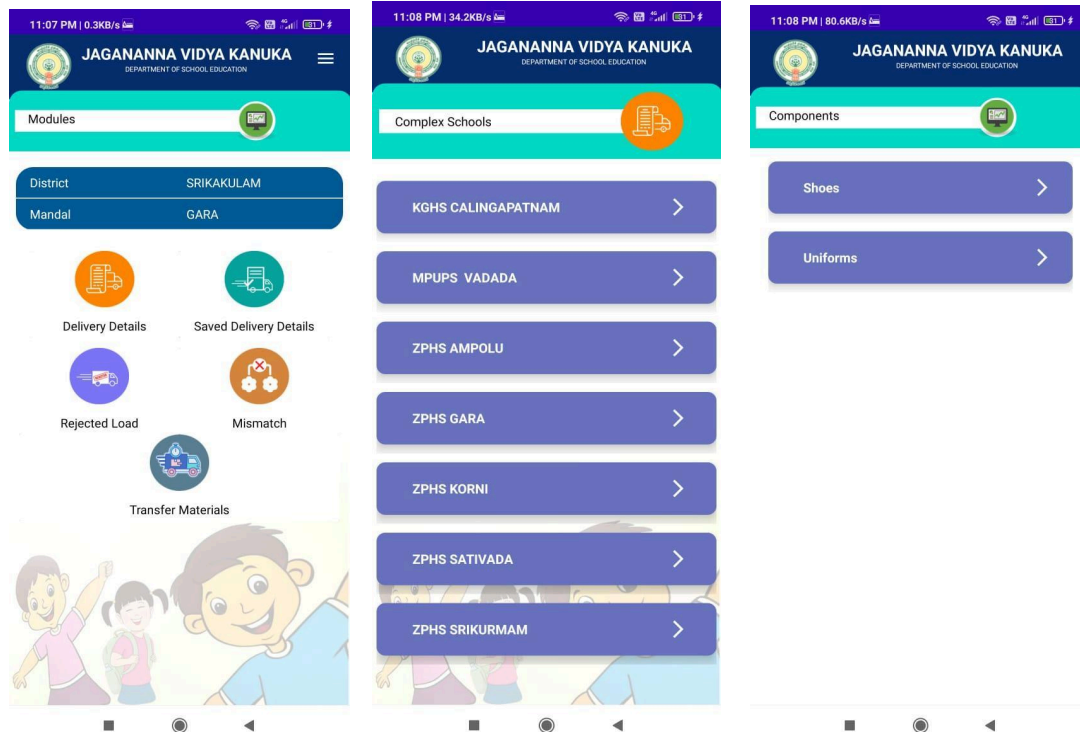
Note: By selecting any one No option, the load will rejected and go to DEO/MEOs for verification.

Note: sample images are mandatory for rejected loads.

Transferring Materials at MEO login:

After successful receiving of loads, the materials are allowed to transfer to Complex schools.

Click on the transfer materials then select school and then Item and then verify the list shows.



Click on the submit the details re submitted and reflected in complex HM login for verification.

The image displays a screenshot of the JAGANANNA VIDYA KANUKA mobile application interface, showing the 'Item Details' screen. The header shows the time as 11:08 PM and data usage as 4.4KB/s. The app title is 'JAGANANNA VIDYA KANUKA' and the subtitle is 'DEPARTMENT OF SCHOOL EDUCATION'. Below the header, there is a list of items with their respective details:

Size Name	Boys : I - 8
Available Quantity	100
Transfer Quantity	23

Size Name	Boys : I - 9
Available Quantity	100
Transfer Quantity	12

Size Name	Boys : I - 10
Available Quantity	0
Transfer Quantity	34

Size Name	Boys : I - 11
Available Quantity	169

At the bottom of the screen, there is a red 'Submit' button.

Note: the user may Increase/Decrease the qty not more than available quantity.

Verifying Materials at Complex schools:

Once the MEO sent the materials to Complex HM, the HM need to verify and accept it then only the materials are allowed to transfer from Complex Hm to Normal Schools.

11:23 PM | 79.7KB/s

JAGANANNA VIDYA KANUKA
DEPARTMENT OF SCHOOL EDUCATION

Modules

District SRIKAKULAM

Mandal G.SIGADAM

Complex School MPUPS METTAVALASA

Delivery Details

Saved Delivery Details

Rejected Load

Mismatch

Transfer Materials

Verify received Material

Distribute

11:30 PM | 78.1KB/s

JAGANANNA VIDYA KANUKA
DEPARTMENT OF SCHOOL EDUCATION

Components

Component Name Shoes

LOAD ID MC281120210000004

TRANSFERRED QUANTITY 137

TRANSFERRED DATE 14-Aug-2021

11:30 PM | 76.7KB/s

JAGANANNA VIDYA KANUKA
DEPARTMENT OF SCHOOL EDUCATION

Item Details

Note: Please scroll down to Submit.

Item Name Shoes

Size Girls : III - 7

TRANSFERRED QUANTITY 126

Item Name Shoes

Size Girls : IV - 8

TRANSFERRED QUANTITY 11

Acknowledge Received Material

☐ Accept ☐ Reject

Remarks Write remarks

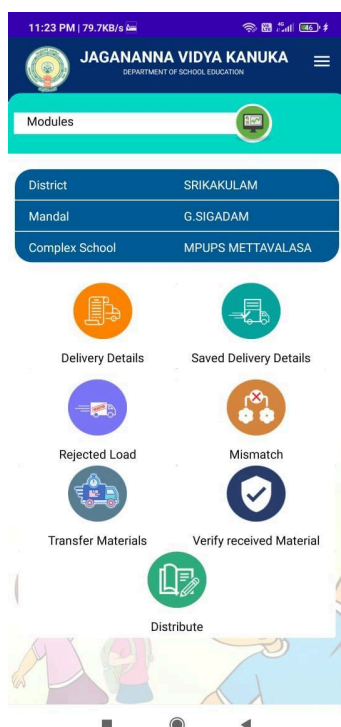
Date Select date

Submit

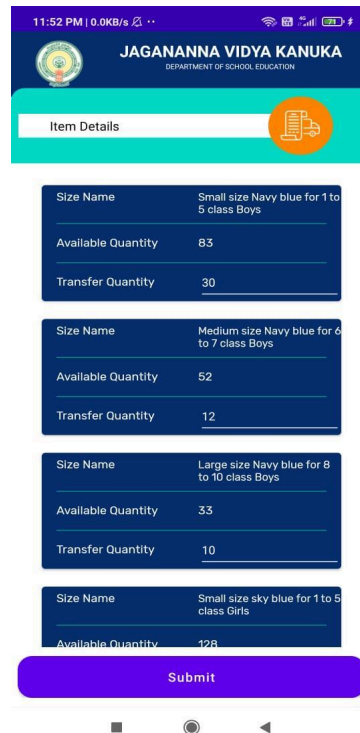
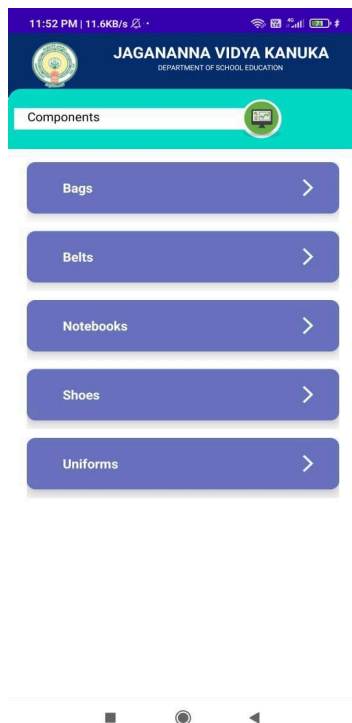
Click on the Verify received Materials and then select Item and then accept or reject the Item, enter remarks, select date and then submit, the details are submitted.

Transfer Materials at Complex HM:

After verifying the materials in complex HM login then only allowed for transfer to schools.



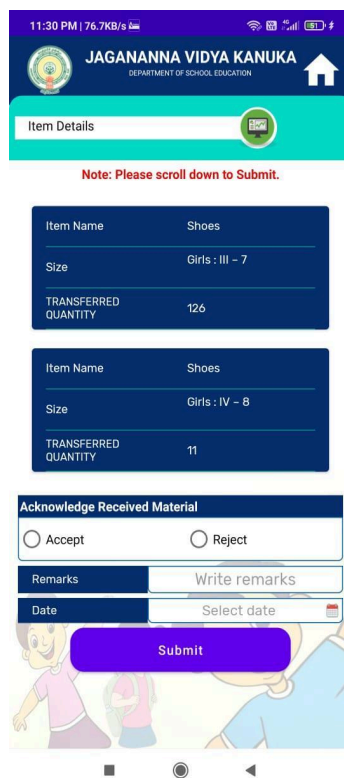
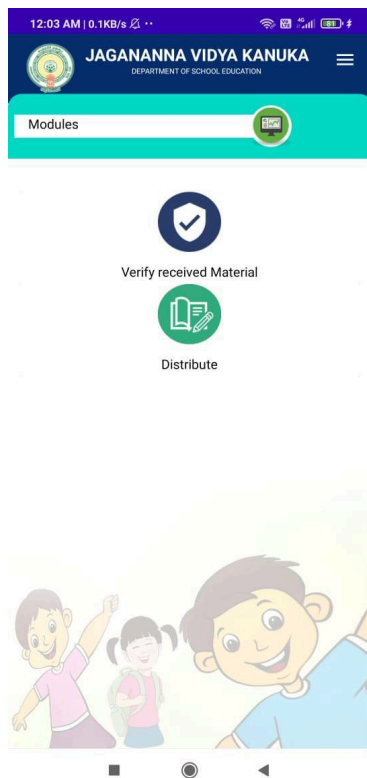
Click on transfer Materials and then select school and then select Component and then click on the submit.



The submitted details are reflected in HM login for verification and then only distribution allowed.

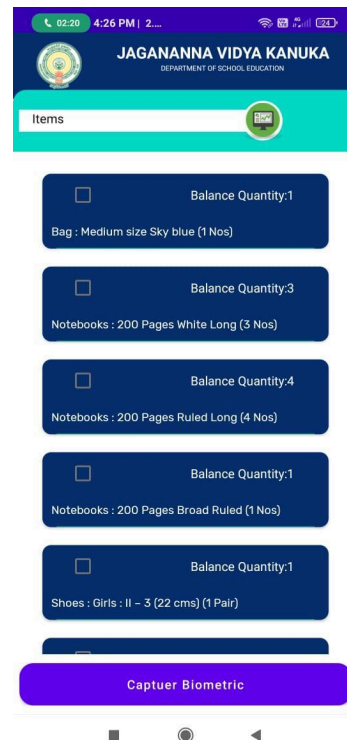
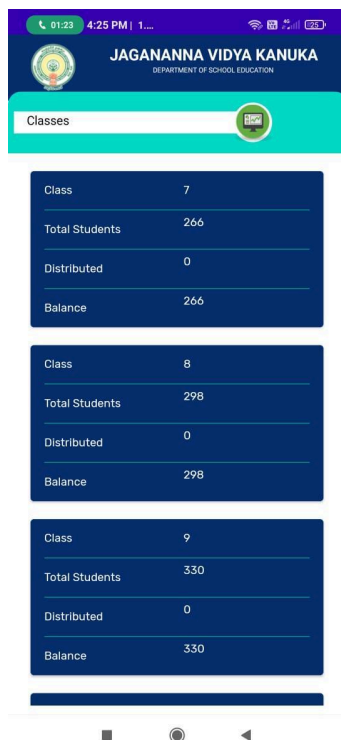
Verification at Normal HM Login:

Whatever material transferred by the complex Hms , the materials must be accept, then only distribution allowed.



KIT Distribution:

Click on the distribution module in Complex HM / Normal HM login.



Select class from list and then select the student from list and select components and click on capture Biometric, ask the Mothe to place thumb on the scanner and wait for response.

Note: ensure Scanner must be connected to device properly or not, scanner drivers app must be run before biometric.