



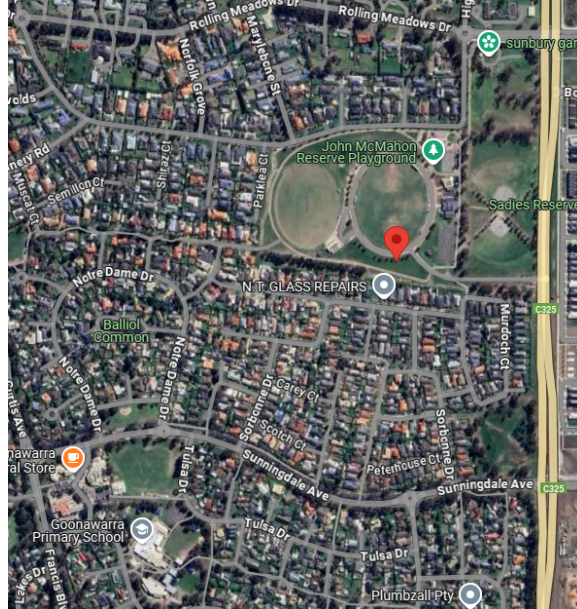
# WOODLANDS DIVISION

## Tee-ball Boys/Mixed & Girls Finals



**Thursday 31st July 9.45am – 2.00pm**

**GOONAWARRA RECREATION RESERVE - Lancefield Road**



**DISCLAIMER:** *This is a live document, this could be updated after viewing, please review this document again before the event.*

**CONVENER**

**EVENT BRIEFING**

9.45am - 9.55am

**COMPETITION STRUCTURE**

- Match time is allocated for 60min matches.
- A fair result will be when both teams have finished the same innings. All matches must be finished - no Ties.
- Fixture times may vary at the convener's discretion.

Time	Pool A		Pool B	
10:10	Team 1 v Team 2	3	Team A v Team B	C
11:20	Team 3 v Team 2	1	Team B v Team C	A
12:30	Team 1 v Team 3	2	Team A v Team C	B
1:40	Winner of Pool A vs Winner of Pool B			

POOL A - Boys/Mixed Teams		POOL B - Boys/Mixed Teams	
Diamond 1		Diamond 2	
1.	Coolaroo South	A.	Gladstone Views
2.	Roxburgh Rise	B.	Mount Ridley
3.	Yubup	C.	Killara

POOL A - Girls		POOL B - Girls	
Diamond 3		Diamond 4	
1.	Gladstone Views	A.	Coolaroo South
2.	Gilgai Plains	B.	Good Samaritans
3.	Killara	C.	Mother Teresa

### **PLAYING CONDITIONS**

- Place the tee in FRONT of home plate and the catcher uses the tee, the runner must touch the actual home plate to score.
- 7 Run Rule - batting team so score 7 runs in an innings, change of sides occurs.
- 3 out all out.
- A coin toss/rock paper scissors will determine which team serves and receives.
- Baselines to be equal all side and approximately 18m long (pending on the space the grounds allow for)
- Team size - 9 players on the field plus a bench of 5.
- Umpires are provided from PE Sport Specialists or Sport Staff One.
- **All students, teachers, officials and spectators must abide by the [SSV Code of Conduct](#).**

### **BOYS/MIXED TEAMS**

- A girl cannot play in a girls' team and a boys/mixed team in the same sport within the same calendar year.
- Team sheets are reviewed.

### **SCHOOL REQUIREMENTS**

- Student medications and medical plans.
- 11" Softball Softcore ball
- Batting Tee
- Bats, Bases (including yellow/white first base), Batters helmets, Gloves
- Team Uniform (numbered)
- 1 Competent Scorer
- [Score Sheets](#)
- Copy of [Code of Conduct](#)

## **RULES**

→ [SSV Primary Tee-ball rules](#)

## **FIRST AID**

- Schools are to be responsible for First Aid of their teams.
- Refer to student medications and medical plans the supervising teacher has provided.

## **FURTHER INFORMATION**

School Sports Victoria Info Pack - page 53

<https://www.ssv.vic.edu.au/Downloads%20Library/Primary%20Schools%20Resource%20Manual.pdf>

Northern Metropolitan Region Finals

<https://www.ssv.vic.edu.au/northern-metropolitan-primary/Pages/Northern-Metropolitan-Primary.aspx>

Best wishes to all teams involved.

Heath Yausnaga

**Woodlands Division Coordinator**

In the event of a team that doesn't attend for unforeseen reasons, the convener will conduct the finals in the following round robin format where the winner qualifies for NMR.

<i>Schools</i>	<i>Time</i>	<i>Field/Court</i>	<i>Field/Court</i>	<i>Bye</i>
1.	10:15am	1 v 3	4 v 5	2
2.	11:00am	3 v 4	1 v 2	5
3.	11:45am	1 v 5	2 v 3	4
4.	12:30pm	2 v 5	1 v 4	3
5.	1:15pm	2 v 4	3 v 5	1