

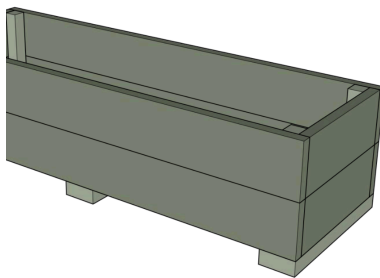


CARPENTRY_{FOR} WOMEN

Build a Planter Box

1-Day Course

Course Syllabus



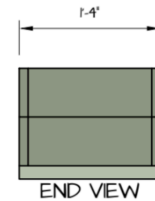
PLANTER
BOX

HAMMERSTONE

3285 Jacksonville Rd.
Trumansburg, NY
14886
607-758-6078



ALL MATERIAL PT



PLANTER
BOX

HAMMERSTONE

3285 Jacksonville Rd.
Trumansburg, NY
14886
607-758-6078

COURSE OVERVIEW:

This course is an introduction to basic woodworking and assembly. In this class you will build a functional and beautiful planter box out of pressure treated pine. This workshop will cover safe power tool use. The skills learned in this course form a foundation for rough carpentry. We will discuss the basics of selecting lumber for your outdoor project.

WHO THIS COURSE IS FOR:

Hammerstone courses are open to all women and gender minorities. Hammerstone welcomes all trans folks including trans men. One-day planter box courses welcome folks of any skill level without a prerequisite.

LEARNING OBJECTIVES

- Develop power tool proficiency
- Identify quality lumber for outdoor projects
- Develop methods for strong assembly
- Describe the differences between several different types of finish

TOPICS COVERED

- Accurate measuring and marking
- Miter saw
- Impact driver
- Drill
- Reading Plans
- Wood and moisture
- Finishing Options: Pine tar, paint, stain, water sealer, etc.

WHAT TO BRING

Please assemble (find in your garage, borrow from a friend, or purchase new) the following personal hand tools to bring to the workshop. The links give more information on what to look for when purchasing new tools. If assembling these tools is a financial burden, please let us know and we will assist you.

- [Ear and Eye protection](#)
- [Dust mask \(N95 is best\)](#)
- [Tool belt](#)
- [Tape measure](#)
- [Utility knife](#)
- [Speed square](#)

COURSE PROJECT DESCRIPTION:

In this course, each student will build one planter. The planter box will be used in a community beautification project for downtown Ithaca. Students will use pressure treated lumber

TAKE HOME:

Students take home plans and knowledge to build their own raised planters.

COURSE SIZE:

COURSE SCHEDULE:

Morning

- Introductions
- Intro to basic carpentry tools
- Measuring and Marking
- Cutting with a miter saw
- Process materials
- Rot resistant wood options presentation

Afternoon

- Finish processing materials
- Assembly
- Discussion of finishing techniques