



Taehyoung Maria Jeon

IMAGINATION INFRASTRUCTURES 02 - A TIME BETWEEN WORLDS

You can still sign up for [a ticket here.](#)

9am - Introduction to the day – Cassie, Keri and Gabriella will open up the event and share more about the past, the what and the why. They will also introduce our host for the day – Farah Elahi.

9.30 - Sophie Strand – Our first keynote of the day, Sophie, author of *A Flowering Wand*, will talk about the ecological imagination and her belief that all thinking and imagining happens interstitially – between beings, ideas, differences, mythical gradients. She'll take us on a wandering path of deeply unfamiliar words and worlds – of “Lunar Kings, Lichenized Lovers, Transpecies Magicians, and Rhizomatic Harpists Heal.”

10.00 - Break

10.10 - The Unimaginable – Exceptional times require an exceptional type of imagination. So, in the midst of multiple and historical planetary crises, how do we walk ourselves into what we cannot entirely foresee at this moment? What happens when we untether ourselves from “reality” as it is now, step into the unknown and then take a step beyond, into the unimaginable? In this session, author Dougald Hine and anthropologist Michal Osterweil, in conversation with Gabriella Gómez-Mont, will explore the perils of entrenched systems, as well as

that peculiar moment when the world as we know it starts to disintegrate – and also the inherent possibilities of a time between worlds.

11.10 - Break

11.20 - Ecological imagination – in this conversation between leading speculative futurist and designer Anab Jain, artist, writer and right to roam activist Nick Hayes and writer and publisher of Dark Mountain Charlotte Du Cann, we will explore how land and non-human beings can be approached as partners in the imagination. We will explore how thinking with non-human beings can provide different ways of understanding the world, opening up new possibilities for design and action. We will also think about the politics of the ecological imagination – how land rights and access are critical to nurturing this imaginative practice.

12.20 - LUNCH

1pm - Vanessa Andreotti – author of *Hospicing Modernity: Facing Humanity's Wrongs and Implications for Social Action* – will ask what stories we need to stop telling and ideas and institutions we need to stop investing in, if we are to open the imagination to other, as-yet unthought possibilities and consider the importance of the relationship with Land as partner in imagination.

1.30 - Amahra Spence and Melz Owusu – Melz, who organises from a principle of liberation that “asks us all to be daring enough to radically imagine and speculate about the futures we are committed to creating” will be in conversation with Amahra, who is an artist rehearsing “a Life-Affirming Infrastructure”, always inspired by the invitation abolition presents. Together they will talk about the work they are both doing to begin the building of these worlds and the infrastructures that they’ve seeded to make this possible – the Free Black University and Abuelos, amongst others.

2pm - Break

2.10 - Civic and Political Imagination at the City Scale – We have done cities (and democracy) a great disservice by thinking we could bypass deep engagement with the political, relational and dynamic nature of cities and societies, by trying to skip the difficult questions through mainly technocratic perspectives. As if the main mission of humanity was efficiency and productivity, instead of making efficiency and productivity just another tool for a larger social

purpose. But political questions are first and foremost questions for the imagination – as Teddy Cruz, Fonna Forman, Michele D'Alena and Christina Adane will prove through both their theory and practice, in conversation with Gabriella Gomez-Mont.

3.10 - Break

3.20 - Possibility and Plurality – this session creates a conversation between two leading thinkers who are reshaping how we perceive and make possibilities. Arturo Escobar helps us to understand how design's world-making capacity can be channelled towards ways of being and doing that are deeply attuned to justice and the earth. Vlad Glaveanu offers new insights into the perception of possibility. In this conversation with Keri Facer they will explore the psychology, politics and practice of possibility thinking, the risks of the dark imagination, and the practical application of their ideas in making new worlds.

4.20 - Break

4.30 - Realists of a Larger Reality: imagination and the everyday (Infrastructuring - Part 1) – There are a set of reigning paradigms, institutions, norms, beliefs, vocabularies and daily practices that sustain the world as we know it in place, for better and for worse. So how do we go about hacking and shifting the existing infrastructure towards more expansive and just scenarios – towards an infrastructure for imagination – that can shape and resource the conditions for new, plural and collective imaginations to emerge? In these lightning talks, divided in two sessions, speakers from multiple disciplines and geographies will share their provocations on how to rethink foundational notions as ideas hit the ground.

Speakers:

Marisa Jahn, Araceli Camargo, Aldo Ramos, Bibi Bakare-Yusuf

5.10 - Break

5.20 - Realists of a Larger Reality: imagination and the everyday (Infrastructuring - Part 2)

Speakers:

Shilo Shiv Suleiman, Ann Light, Jonathan Holloway, Toronto Imaginal Transitions

6pm - Collective Imagination Community of Practice – Joseph Rowntree Foundation has commissioned Canopy, Huddlecraft and Centre for Public Impact to host a 'Collective Imagination Community of Practice' for the next 12 months. We explain more about that [in this blog](#). This is a chance to meet the Hosts, hear more about what the CoP will be offering, as well as having a chance to shape it and the £100,000 fund that is there for the CoP to draw on.



7pm - Amahra Spence and Aisha Shillingford – for this last conversation of the day we will hear from two shining lights and pioneers in this cultural work. Amahra and Aisha will talk about their practices and projects at MAIA and at Intelligent Mischief. They will discuss who inspires and informs their work, about the Black Imagination, their ancestry and cultural traditions, and the resonance of those things at this time. This session will close the whole day out with the energy and joy of possibility, alongside a rigour and perspective on what it means to truly practice, resource and make space for this work.

our speakers



Dr. Andreotti has worked extensively across sectors with NGOs, professional associations, governments, social movements, and communities. Her publications include analyses of political economies of knowledge production and discussions of the ethics international development, with an emphasis on engagements with Indigenous, racialized, and other systemically marginalised communities.

She is the author of [Hospicing Modernity: Facing humanity's wrongs and the implications for social activism](#) (2021) and one of the co-founders of the [Gesturing Towards Decolonial Futures](#) (GTDF) Arts/Research Collective.

	<p>Dr. Andreotti has been a full professor at the Department of Educational Studies at the University of British Columbia since 2017, and will be Dean, Faculty of Education at the University of Victoria from July 2023.</p>
	<p>Anab Jain is a filmmaker, designer and futurist. She is co-founder of Superflux, a pioneering speculative design and experiential futures studio, working for clients and commissioners such as V&A, Google, Red Cross, UNDP, IKEA and Deepmind. Anab has delivered keynotes at TED, Skoll, House of Lords and House of Commons UK, and shown work at MoMA New York, V&A London, National Museum of China and Museum of the Future Dubai.</p> <p>Anab also serves as Professor for Design Investigations at the University of Applied Arts, Vienna.</p>
	<p>Charlotte Du Cann is a writer, editor and co-director of the Dark Mountain Project. Charlotte has published numerous works about mythology, metaphysics and cultural change. She also teaches collaborative non-fiction writing, and radical kinship with the other-than-human world.</p>
	<p>Nick Hayes is an illustrator, co-founder of the right to roam campaign and author of the Sunday Times best selling Book of Trespass.</p>
	<p>Sophie Strand is a writer and poet based in the Hudson Valley who focuses on the intersection of spirituality, storytelling, and ecology.</p>
	<p>Amahra Spence is an artist, writer, whose work explores the poetics and pragmatics of liberation. As Founding Director of MAIA (2013) and Organiser of The Black Land & Spatial Justice Project (2020), her work expands culture and the politics of</p>



space, committing to infrastructure building, resource redistribution and platforming radical imagination.

Amahra is currently Visiting Lecturer at Birmingham City University, exploring *Architectures of Abolition* with undergrad and postgrad architecture and design students.




Melz Owusu is a queer, transmasculine and non-binary activist, scholar, consultant and spiritualist. They are the Founder of the [Free Black University](#) and PhD researcher at the University of Cambridge. Their work explores decolonisation, the radical Black imagination and building transformative worlds.



Michele d'Alena is an innovation manager with an extensive background in co design processes, on and offline, to support and advise communities, networks and organisations. He is currently in charge of the Civic Imagination Area, at the Fondazione Innovazione Urbana, supporting Bologna Municipality Innovation Policies, in Italy. He believes that "the community is the message," reframing McLuhan's quote and in community driven approaches that allow shared visions, innovation and collaboration. He won the Engaged Cities Award in 2018 for a strategy to engage communities to strengthen urban democracy, in 2020 he wrote a book "Civic imagination, the energy of communities inside politics", and with Ethical Deliveries project ("Consegne Etiche"), he received the Compasso d'Oro, one of the oldest and most influential design awards worldwide.

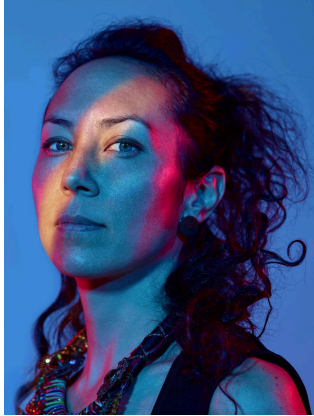


Christina Adane is a passionate campaigner who started her journey at BiteBack2030 during its inception. As founding co-chair, she fronted campaigns like free school meals and the junk food marketing. Her work has been recognised by the Duke and Duchess of Sussex, who welcomed Christina as a guest on their podcast, and by the BBC, who named her one of the top 100 women of 2020. In 2021, she won the Diana Legacy Award for her

	<p>efforts with BiteBack in fighting for a fairer food system. Christina was also a top three contender for the Child's Peace Prize for 2021. She has now come out of her role as Campaigner In-Residence for Bite Back 2030 to do freelance work and pursue other creative endeavours.</p>
	<p>Arturo Escobar is an activist-researcher from Cali, Colombia, working on territorial struggles against extractivism, postpatriarchal, postdevelopmentalist and post-capitalist transitions, and ontological design. He was professor of anthropology and political ecology at the University of North Carolina, Chapel Hill, until 2018, and is currently affiliated with PhD Programs in Design and Creation and in Environmental Sciences in Colombia. His most well-known book is <i>Encountering Development: The Making and Unmaking of the Third World</i> (1995, 2nd Ed. 2011). His most recent books are <i>Designs for the Pluriverse: Radical Interdependence, Autonomy, and the Making of Worlds</i> (2018); <i>Pluriversal Politics: The Real and the Possible</i> (2020); and <i>Designing Relationally: Making and Restor(y)ing Life</i>, with Michal Osterweil and Kriti Sharma (forthcoming).</p>
	<p>Vlad P. Glăveanu, PhD, is Full Professor of psychology in the School of Psychology, Dublin City University, and Professor II at the Centre for the Science of Learning and Technology, University of Bergen. He is the founder and president of the Possibility Studies Network (PSN). His work focuses on creativity, imagination, culture, collaboration, wonder, possibility, and societal challenges. He edited the <i>Oxford Creativity Reader</i> (2018), co-edited the <i>Cambridge Handbook of Creativity Across Domains</i> (2017) and the <i>Oxford Handbook of Imagination and Culture</i> (2017), authored <i>The Possible: A Sociocultural Theory</i> (Oxford University Press, 2020), <i>Creativity: A Very Short Introduction</i> (Oxford University Press, 2021), and <i>Wonder: The Extraordinary Power of an Ordinary Experience</i> (Bloomsbury, 2020), and authored or co-authored more than 200 articles and book chapters in these areas. Dr. Glăveanu co-edits the book series Palgrave Studies in Creativity and Culture with Palgrave and the Cambridge Series on Possibility Studies with Cambridge University Press. He is editor of <i>Possibility Studies and Society</i>, launched by Sage in 2022. In 2018, he received the Berlyne Award from the APA Division 10 for outstanding early career contributions to the field of aesthetics, creativity, and the arts.</p>



Bibi Bakare-Yusuf > Bibi is co-founder and publishing director of one of Africa's leading publishing houses, Cassava Republic Press. She has worked as a gender and research consultant in the public, private and development sectors for the BBC, UNWomen, ActionAid, Central Bank of Nigeria, the European Union among others.



An artist, filmmaker, and transmedia producer of Ecuadorian and Chinese descent, Marisa Morán Jahn's work redistributes power, "exemplifying the possibilities of art as social practice" (ArtForum).

Codesigned with youth, new immigrants, and working families, Jahn's civic-scale projects have engaged millions both on the street and at venues such as the Venice Biennale of Architecture, and the United Nations.




Design and Solidarity. Conversations on Collective Futures is a new book co-authored by artist Marisa Morán Jahn and architect Rafi Segal. With theoretical and practical takeaways, this book explores the power of design, art, and architecture in shaping mutualistic initiatives, fulfilling their promise of solidarity, and ensuring that these values endure.



Aldo Ramos (born 1986, Mexico) lives and works in Amsterdam

Determined to strengthen the protection of life, his work has emerged in the interdisciplinary space of art, social practice and environmentalism. After leaving behind his life and profession as a lawyer and relocating to the Netherlands in 2010, Aldo has established a connection with other people who share similar experiences, different stories but the same struggle. People who aspire to construct alternatives to the current oppressive system.

Since their first encounter in Colombia in 2017, Aldo works together with Arhuacan and other communities of Abya Yala who are considered living seeds of hope in other possible worlds. These communities have barely been acknowledged, but have never been absent. Instead, they are firmly in defence of life in its diversity. resisting the oppression, massive destruction and

	<p>genocide by the current system. Aldo is using art as a platform to promote a pluriversal rather than a universal reality</p>
	<p>Araceli Camargo is of Turtle Island descent and uses neuroscience to study the link between biological inequity, disease, and oppressive systems. She is part of the Centric Lab ecosystem.</p>
	<p>Shilo Shiv Suleman is an Indian contemporary artist. Her work encompasses illustration and installation art. Shilo's practice focuses on the intersection of magical realism, art for social change and technology. She is also the founder of The Fearless Collective - women street artists working across Asia to bring beauty to places of fear.</p>
	<p>Jonathan Holloway - As Artistic Director/CEO of three of the world's largest international festivals, he has devised major events for London, Melbourne, Perth, New York, Norwich, Bloomberg, Chevron and President of the United States (then VP) Joe Biden.</p> <p>He also coaches leaders, consults and speaks to major cities and organisations around the world, helping them to unlock giant thinking, and enabling them to become freshly inspired and inspiring post-pandemic. Cultivating inspiration</p>
	<p>Cheryl Hsu is a transition designer, speculative researcher and artist, braiding the living root bridges that connect the flourishing of people with the planet. She has been unfolding in soul-inquiry into the imaginal, cultural and cosmological patterns that scaffold collective meaning-making in this time between worlds.</p> <p>Tara Campbell is a designer and transition strategist managing collaborations for just, sustainable, and convivial futures. She works as the Wellbeing Economies manager for the David Suzuki Foundation in Canada.</p> <p>Toronto Imaginal Transitions is a speculative research cocoon and relational sanctuary for nurturing the imaginal cells of</p>



transition in this time between worlds. Our provocation is to listen to and follow our deepest desires to co-create the systems and life-worlds that we long for.



Born and raised in Trinidad & Tobago, Aisha Shillingford is an Anti-disciplinary artist, designer, cultural and social movement strategist committed to unleashing Black imagination to shape the future. She cultivates connection to beautiful futures grounded in Black liberation.



Teddy Cruz (MDes Harvard) is a professor of Public Culture and Urbanism in the Department of Visual Arts at the University of California, San Diego. He is known internationally for his urban research of the Tijuana/San Diego border, advancing border neighborhoods as sites of cultural production from which to rethink urban policy, affordable housing, and public space.

Fonna Forman (PhD Chicago) is a professor of Political Theory and Founding Director of the *Center on Global Justice* at the University of California, San Diego. A theorist of ethics and public culture, her work focuses on human rights at the urban scale, climate justice in cities, border ethics, and equitable urbanization in the global south. She is known internationally for her revisionist research on Adam Smith, recuperating the ethical, social, spatial and public dimensions of his thought.

Cruz & Forman are principals in *Estudio Teddy Cruz + Fonna Forman*, a research-based political and architectural practice in San Diego, investigating issues of informal urbanization, civic infrastructure and public culture, with a special emphasis on Latin American cities.



Dougald Hine is a social thinker, writer and speaker. After an early career as a BBC journalist, he co-founded organisations including the Dark Mountain Project and a school called HOME. He has collaborated with scientists, artists and activists, serving as a leader of artistic development at Riksteatern (Sweden's national theatre) and as an associate of the Centre for Environment and Development Studies at Uppsala University. His latest book is *At Work in the Ruins: Finding Our Place in the Time of Science, Climate Change, Pandemics & All the Other Emergencies* (2023). He co-hosts The Great Humbling podcast and publishes a Substack called Writing Home.



Michal Osterweil believes in the need for a radical pedagogy for learning (and unlearning) how to live in these times in order to usher in a resilient future. She teaches in the Curriculum in Global Studies at UNC Chapel Hill where she also received her PhD in Cultural Anthropology. She is deeply committed to community and popular education aimed at activists, community members and others not in school that see the importance of actively studying and (un)learning what it means to be a change agent in these intense times of crisis. She believes that learning how to live into a resilient future requires a pedagogy that considers theory, history, and philosophy as well as more practical, spiritual and embodied knowledges and practices. Her courses, research and writing focus on new paradigms of social change, in particular those emerging from various social movements as well as other sources of relational or non-dualist thought and action.



Ann Light is a design researcher and interaction theorist, specialising in participatory practice, human-technology relations and collaborative future-making. Regarding the social and ecological as inextricably linked, over the last years she has turned to consider climate collapse and the stress that current systems put on the planet, believing creative remaking of relations is needed for liveable futures and looking at ways that socially engaged art and design can find potential in difficult places and offer visions of fairer worlds. She is co-creator of the CreaTures Framework,

	prepared as part of the European Union project <i>Creative Practices for Transformative Futures</i> (CreaTures: https://creaturesframework.org).
--	--

our curators

Keri is Professor of Educational and Social Futures at the University of Gothenburg and Co-Investigator at the Centre for Socio Digital Futures. From 2018–2020 she was Zennström Chair of Climate Change Leadership at The University of Uppsala, Sweden. From 2012–2018 she was Leadership Fellow for the AHRC’s Connected Communities Programme. From 2001–2008 she was Research Director for the Futurelab research and development lab. Her research focuses on how we can learn – as individuals and communities – to build liveable futures for all in the context of technological, social and environmental change. Her current work focuses on the idea of the ‘temporal imagination’ – how we use time to think with and open up possibilities. Her practice ranges from participatory collaborative projects with local communities to large scale foresight projects with government agencies..

Keri is Editor-in-Chief of the Journal Futures, a Trustee of Black Mountains College and edits the Anticipation & Futures Studies Series for Routledge and the Connected Communities series for Policy Press.

Gabriella is the founder and CEO of Experimentalista, a novel type of nomadic and creative office specialised in cities – and that constantly shifts shape to accommodate high-level, transdisciplinary collaborations across the world.

She was also the Chief Creative Officer of Mexico City, and the founder of Laboratorio para la Ciudad (2013 – 2018), the award-winning experimental arm and creative think-tank of the Mexico City government, reporting to the Mayor. As director of the Lab she headed a highly transdisciplinary team: from urban geographers, political scientists and civic tech experts, to artists, historians and philosophers. The Lab was created to tackle urban challenges – from experiments in democracy and mobility to projects related to spatial justice, play as a city making tool; new models of dynamic governance and civic tech platforms etc – creating novel transdisciplinary methodologies and participatory practices, exploring ways to find common ground in a gargantuan, diverse (and often divided) city. Hence the Lab’s projects were multiple, often paradigmatic and covered widely in international publications.

Besides her fascination with all things city, Gabriella has been a journalist, visual artist, and director of documentary films, as well as a creative advisor to several universities and companies. She has received several international recognitions for her work in different fields, such as the first prize in the Audi Urban Future Award, the Best Art Practice Award given by the Italian government, The Creative Bureaucrats Award by the city of Berlin, and the TED City 2.0 Prize, among others. She was also named one of the 100 most creative people in business by Fast Company magazine. Gabriella is an Senior Policy Fellow at Visiting Professor of Practice at UCL's Institute for Public Purpose. She was also named a Yale World Fellow, TED Senior Fellow, MIT Director's Fellow, Georgetown University Visiting Fellow, Canadian Urban Institute Senior Fellow, Institute for the Future Fellow, a Salzburg Seminar Fellow, a Fabrica Alumni and a World Cities Summit Young Leader.

She is the founder of The Institute for Everything In-Between, to be inaugurated in July 2023.

OUR HOST FOR THE DAY

Farah Elahi – Farah is the Head of Community Engagement at the Greater London Authority and a Trustee of the JRF. Whilst at the GLA, she has led on the Civil Society Strategy and City Hall's work on supporting a thriving sector. Farah's previous roles include Research and Policy Analyst at the Runnymede Trust, and the Family and Childcare Trust. Her research has focused on ethnic inequality in London, employment and education. Published reports include a number of local Race Equality Scorecards and policy briefings, Islamophobia: Still a challenge for us all, and Nations Divided: How to Teach the History of Partition and Ethnic Inequalities in London: Capital for All.

COLLECTIVE IMAGINATION - COMMUNITY OF PRACTICE HOSTS

Canopy is a not-for-profit organisation which centres imagination practice in the development and delivery of all their projects, working deeply with marginalised communities, organisations and ecosystems to grow and voice their imaginations to the structures and systems which govern their realities. For Canopy, it is imperative to create the conditions for new shared imagining, new stories and new action for a fairer world. Otherwise, the future will continue to be built on imaginations that are one-sided, incomplete and disconnected.

Huddlecraft specialise in a peer-led approach to unearth and multiply human potential. They have created infrastructure to support purposeful, peer-to-peer learning and action-oriented communities and huddles through their own Host Fellowship and collaborations. One example is a network of 'Renegade Economist' peer learning journeys

putting Doughnut Economics principles into practice in their neighbourhoods (with CIVIC SQUARE and DEAL).

Centre for Public Impact is a UK charity with a global reach, with a mission to support practitioners and leaders in and around government to reimagine how government could be and act. They work actively to build the mindsets, knowledge, skills and tools needed to bring about a transformation in public services. Experimentation and learning are both fundamental to CPI's method and strategy for change, describing this approach as 'learning as management strategy'.