

## Shin Megami Tensei: Persona Snow Queen Quest (Bad Ending) Route

Hello! This is the translated route used by Tick\_Show in his Bad Ending run, this run makes use of Fusing a Pixie with Megidolaon and using the Latent Resurrection ability to massively boost Magic Attack.

When levelling up. Put your points into AGI until 50 then put points into DEX until 38 then put the rest into AGI

### <Intro>

Select Normal Difficulty, Timing starts when you confirm difficulty.

Select Option 1 (Bet on Mark) > Name MC 1 (X>Triangle>X>Start>X>Start)

After regaining control in the infirmary, Open up the settings, set Message speed to fast, change orientation if you want to then Remove all armour/Weapons from party

Exit **[St. Hermelin High]**

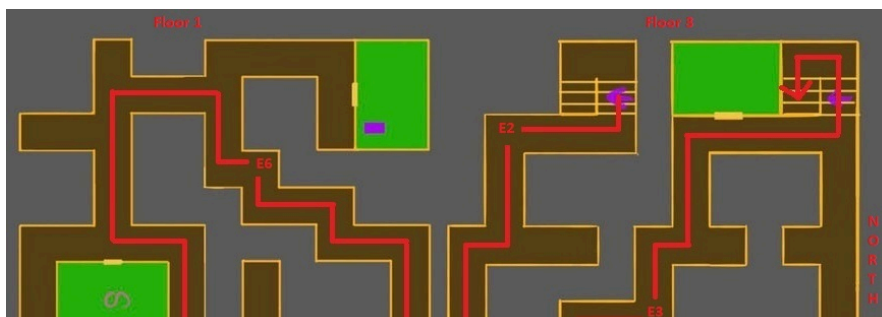
**[Mikage-cho]** Head north 1 screen then enter **[Mikage Sun Mall]** - Enter **[Sennen Mannen-Do]** (First shop on the left, entering from the South) and sell all equipment - Should have 16,300 Yen

Enter **[Judgement 1999]** (Opposite Velvet Room) - Speak to the first clerk and convert all money into coins and play Video Poker (Middle machine closest to Exit) - play until you have 3000 coins, play Hi & Low or Big & Small, I personally find Hi & low is more consistent but both are viable options.

Leave **[Mikage Sun Mall]** heading North, go North 1 screen then East 1 screen then enter **[Hospital]**

### <Hospital>

Demon	Contact Method/Alternate Attack
Poltergeist	Nanjo Bribe
Slime	MC Taunt
Pixie	Mark Brag (Reflects Garu)



Take the stairs up to the 3rd floor then enter Maki's room (2nd room on the right)

After Persona Awakening, head through the hospital recruiting Poltergeist and Slime, Garu everything else, Help nurse, watch Elly Awakening

Leave [Hospital], head to [Alaya Shrine] then back to [St. Hermelin High]

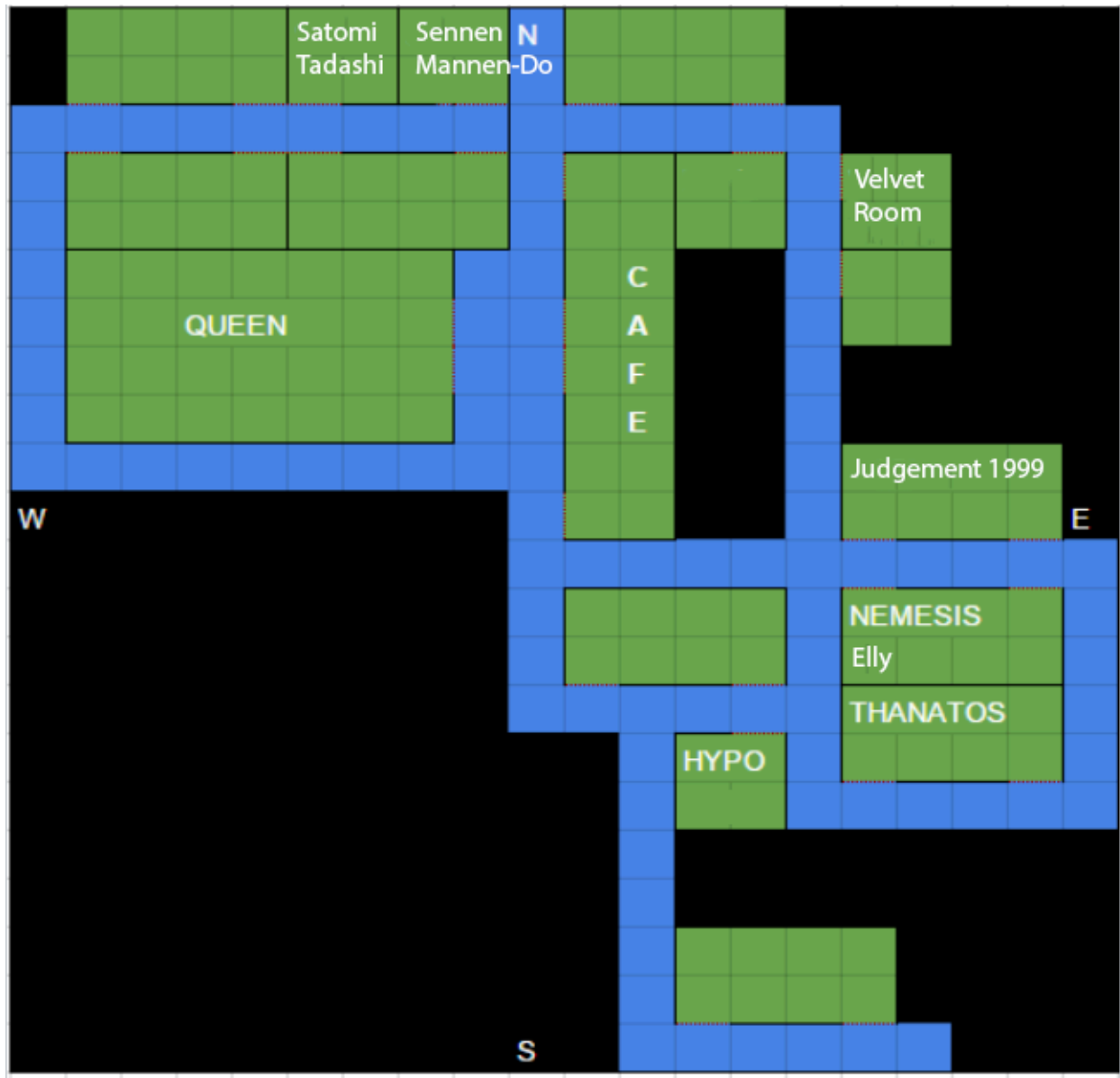
### **<St. Hermelin High>**

Trigger Snow Queen Quest

After the dialogue in the infirmary,

Speak to the Female Student in [Class 2-4] > Male Student in [3F Library] > Speak to the closest person in the [Drama Club] (First room after the Gym) > Male Student in the [3F Student Council Room] (next room after the library) > Enter the [Principal's Office] (Room to the left of the Infirmary) > Head to the [Gym Storage] and open the box > Leave the Gym and head to the hole in the wall

### **<Frozen St. Hermelin>**



After Cutscene, Recruit Elly at [\[Nemesis Tower\]](#) door, then head into [\[Judgement 1999\]](#) and buy 1x Scorching Tablet (3000) from the 2nd Clerk. Head to [\[Cafeteria\]](#) and recruit Brown.

Enter [\[Sennen Mannen-Do\]](#), unequip everything from all party members, sell all equipment, buy 4x-6x Chewing Soul (500), enter [\[Satomi Tadashi\]](#), 8x Revival Bead (3600), and buy Rattle drinks (200) with the rest of the money

Enter [\[Velvet Room\]](#) on New Moon,

[Velvet Room](#)

[Create Persona > Guided Fusion](#)

[Pixie \(Poltergeist + Slime\) > Add Item > Scorching Tablet](#)

Equip Pixie on Yukino instead of Vesta

Change formation to

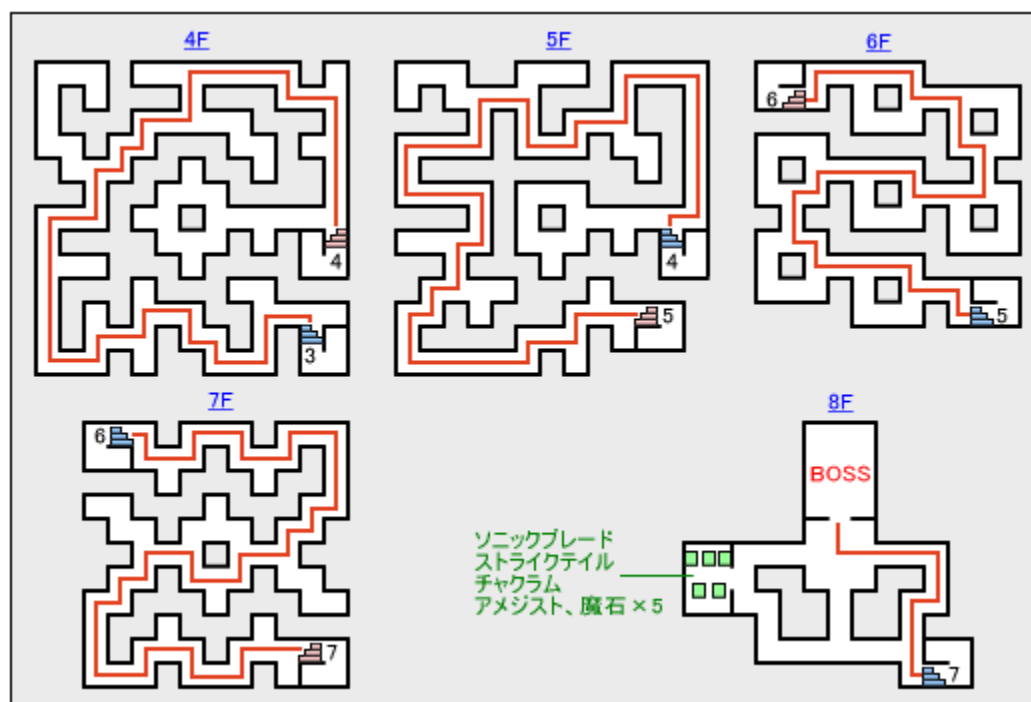
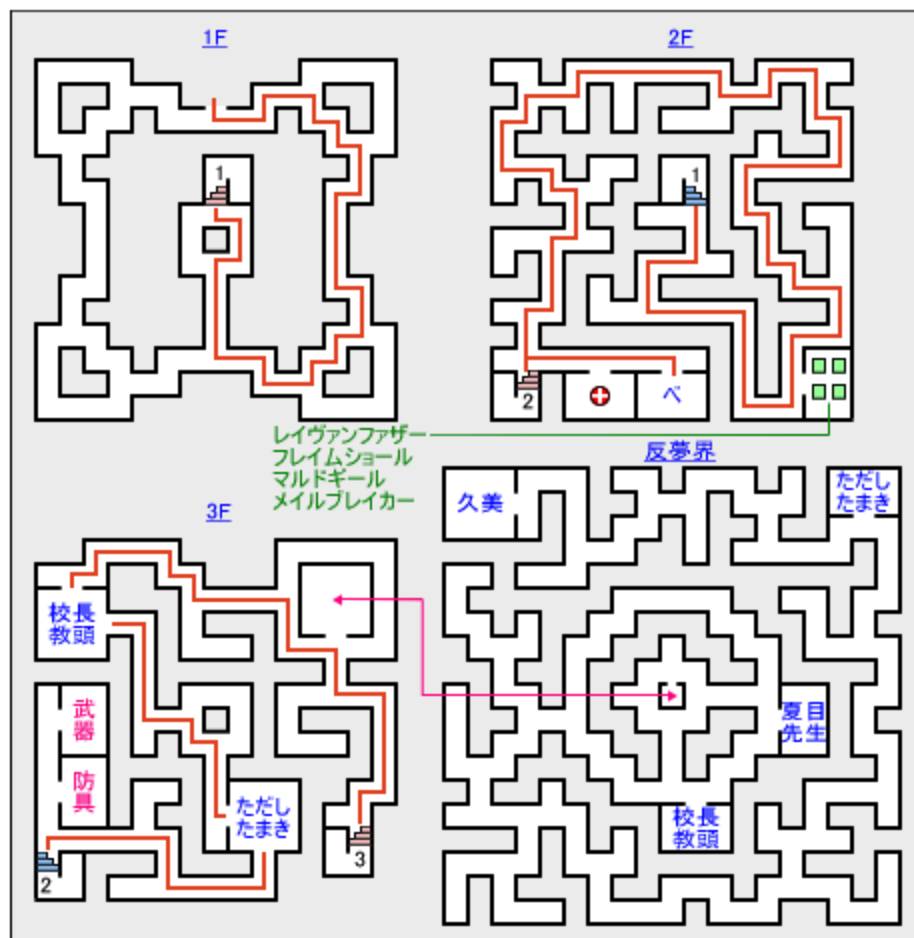


Enter [Hypnos Tower]

### <Hypnos Tower>

Demon	Contact Method/Alternate Attack
<b>See Previous</b>	<b>See Previous</b>
Nacht Kobold	Elly Invite
Nightmare	Yukino Ignore
Angel	Elly with Nike equipped
Nisroc	MC Persuade
Yomotsu Shikome	Yukino Ignore
Lilim	MC Persuade
Afanc	Elly Invite





On first encounter, clear out all enemies until 1 weak enemy left, then have Yukino cast Dia on herself until she runs low on SP, set everyone else to guard, then Autoplay until she runs out of SP, finish battle, refill SP then rinse and repeat on the next encounter until Yukino reaches max rank

Once Yukino reaches max rank, kill and revive until Latent Resurrection is triggered then finish the fight. On the next fight cast Dia once then Megidolaon spam everything else. Head to the **Velvet room** on 2F, give Yukino her initial Persona and swap out MC's Persona with Pixie

### **BOSS: Hypnos (914 HP)**

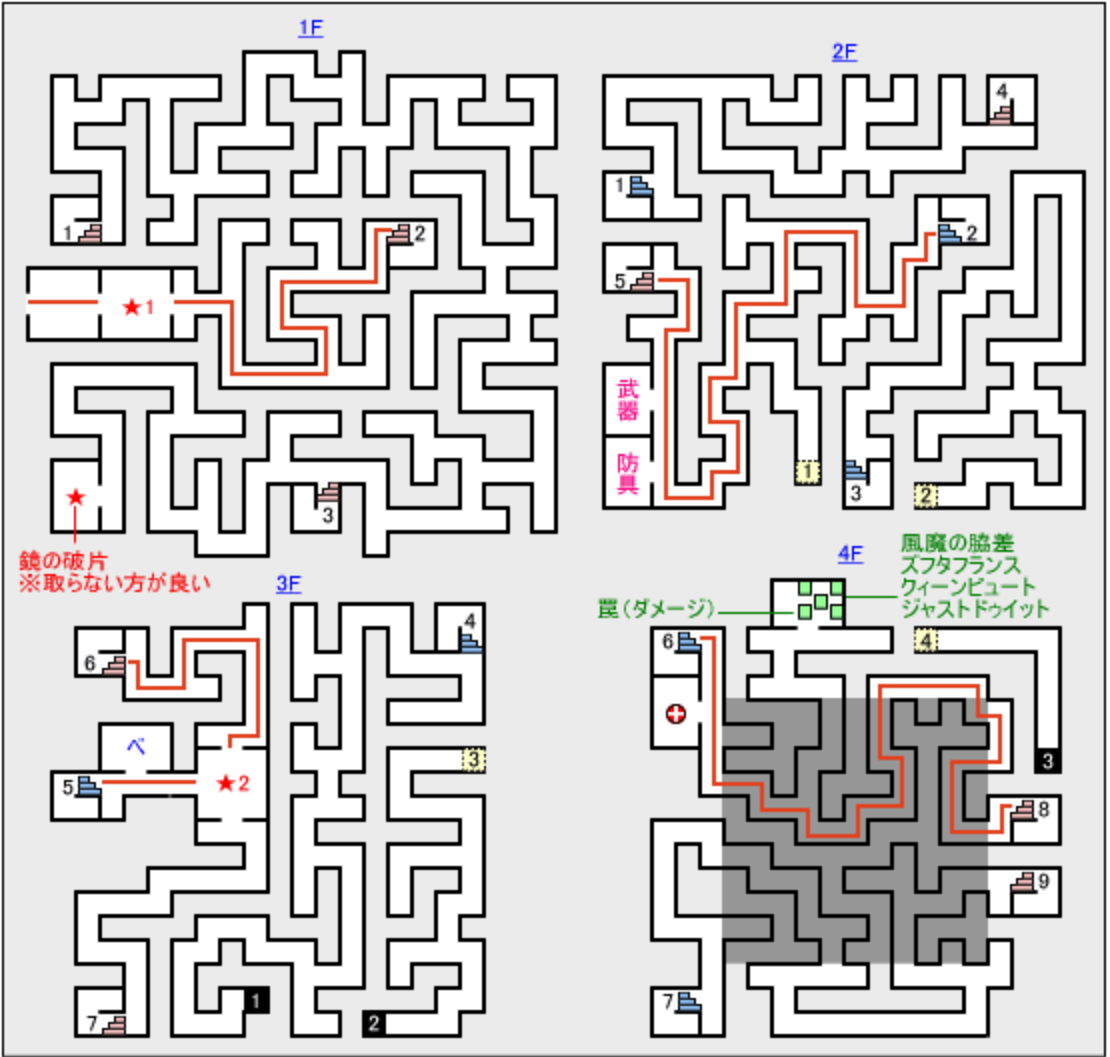
**MC: Megidolaon**

**<Frozen St. Hermelin>**

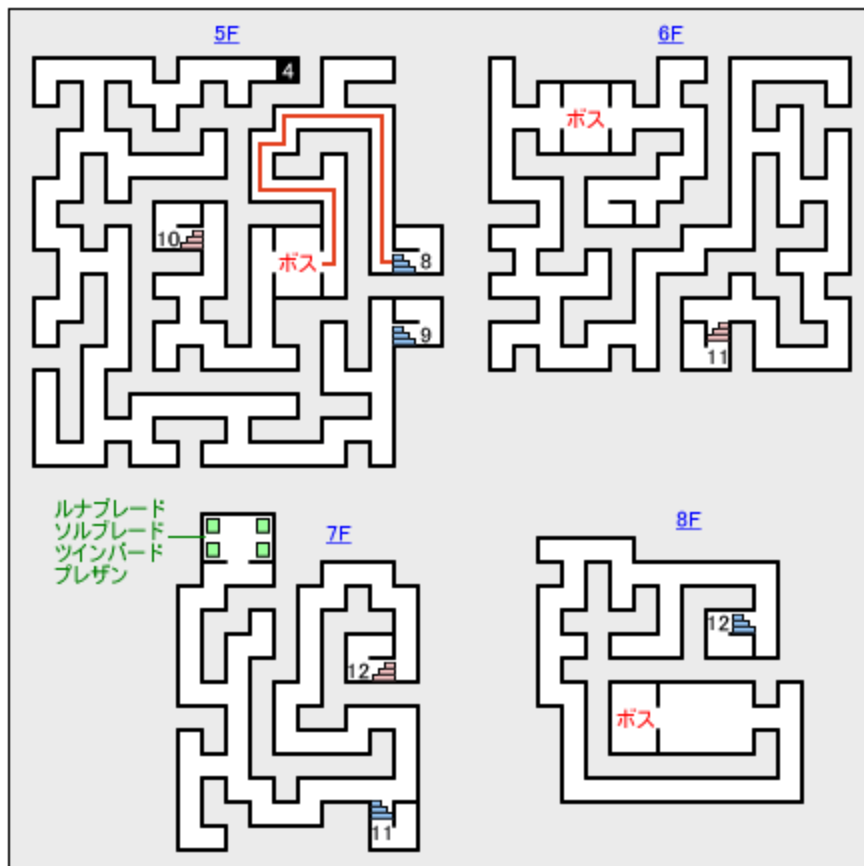
Enter **Nemesis Tower**

**<Nemesis Tower>**

<b>Demon</b>	<b>Contact Method/Alternate Attack</b>
<b>See Previous</b>	<b>See Previous</b>
Archangel	Ayase Seduce
Malphas	MC Persuade or Elly Kouha
Principality	Elly Sing
Pairika	Brown Chat
Iwate	Zio/Garu (Repels Nuclear)







Head left after 3rd floor cutscene

**BOSS: Nemesis (2230 HP)**

**MC: Megidolaon**

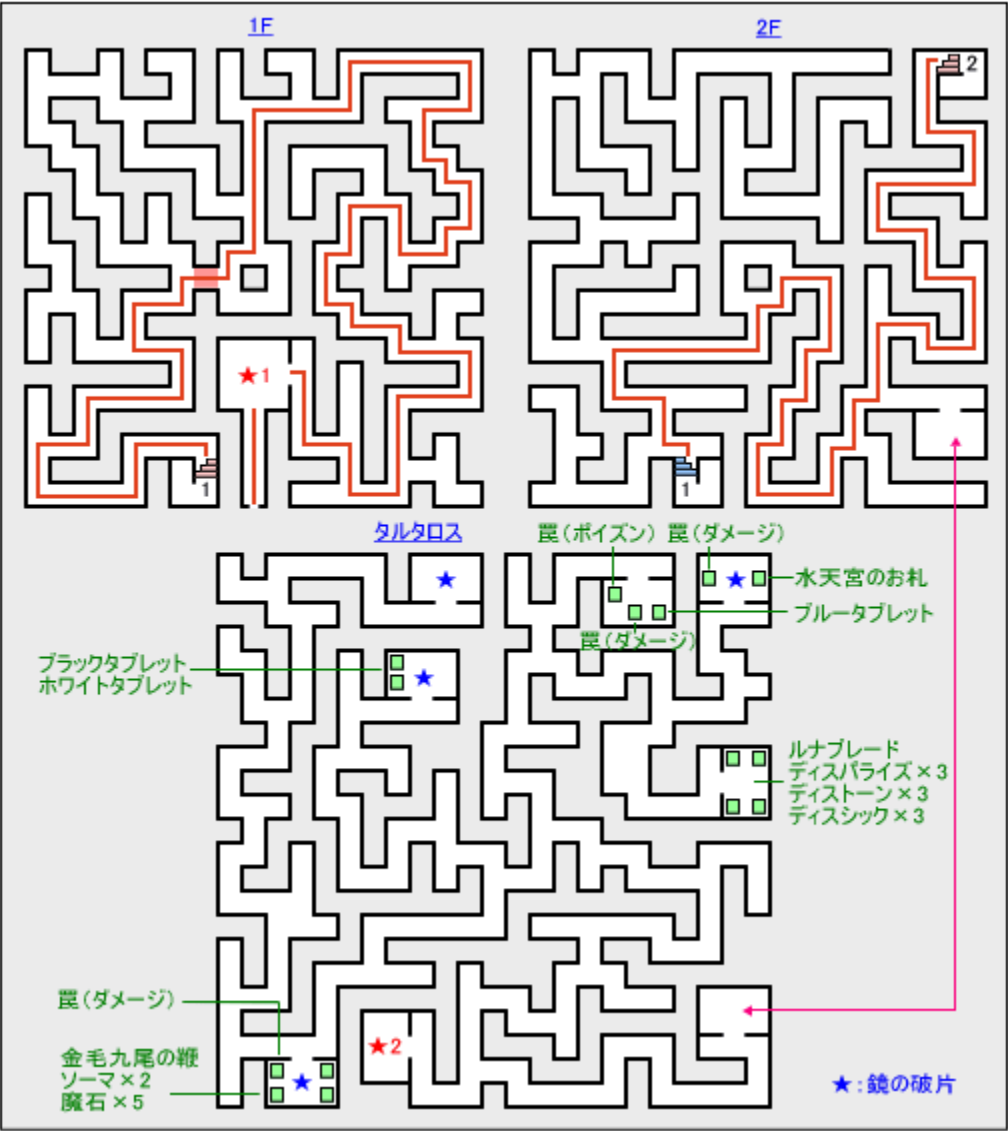
**<Frozen St. Hermelin>**

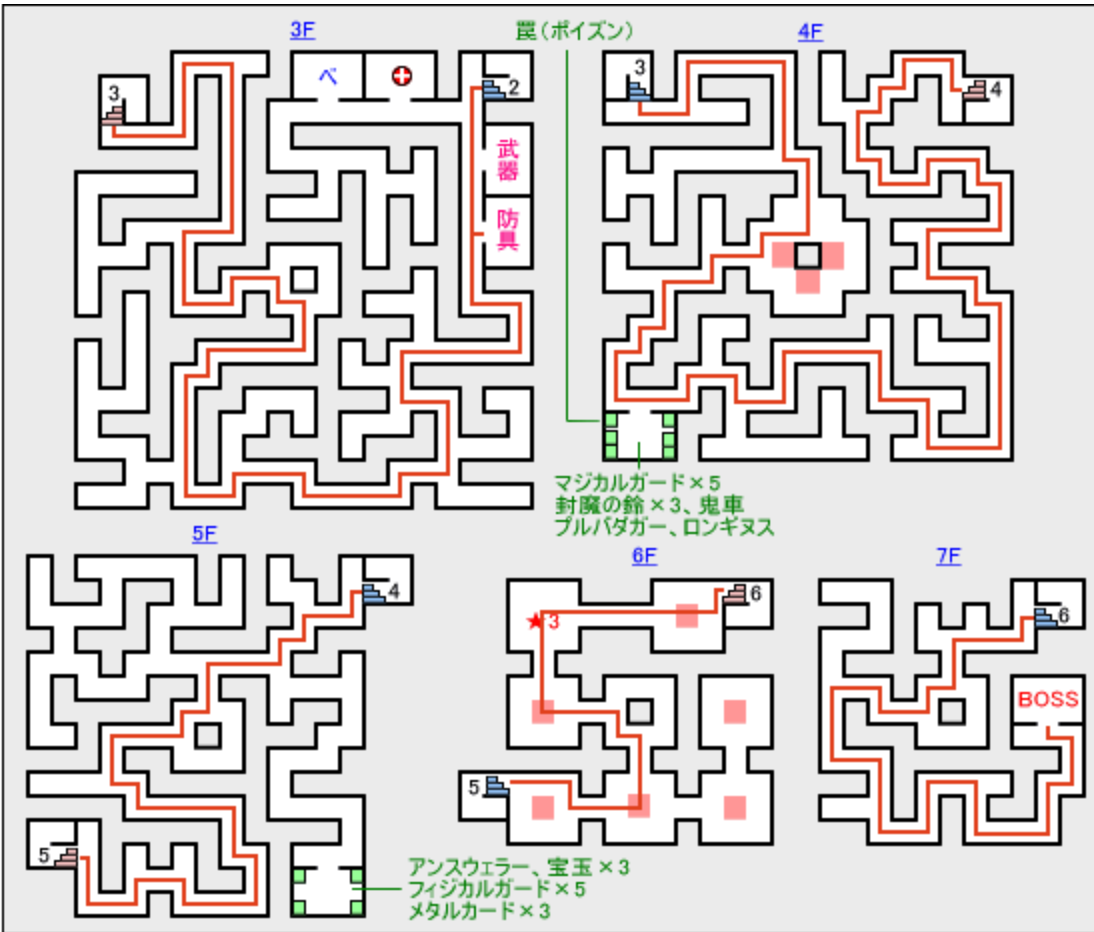
Enter **Thanatos Tower**

**<Thanatos Tower>**

Demon	Contact Method/Alternate Attack
See Previous	See Previous
Hi No Enma	MC Taunt
Power	MC Persuade

Alastor	Elly Invite
Virtue	Brown Chat
Eligor	Brown Chat
Incubus	Physical/Escape Elly Invite (Causes Happy)





Blow out Right Candle

Enter **[3F Armour Shop]**, Buy Jagd Arms and Legs (25.200 + 21.600) and Full Sturm set (12.600, 13.320, 30.960, 14.400)

Optimise MC and Elly

**BOSS: Thanatos (4500 HP + 999 HP)**  
**MC: Megidolaon**

<Frozen St. Hermelin>

Change formation



Enter **Courtyard**

**BOSS: Lady Snow (6200 HP)**  
**MC: Megidolaon Elly: Dia on MC**

Skip through Dialogue and run over

