

Behavior Based Safety Martin Weninger SP22

When designing this project, the case study and choices will be completed in Articulate Storyline. The Storyline will be placed into the Articulate Rise component as a piece of content. The remainder of the course will be developed in Articulate Rise.

1. Behavior Base Safety Observation

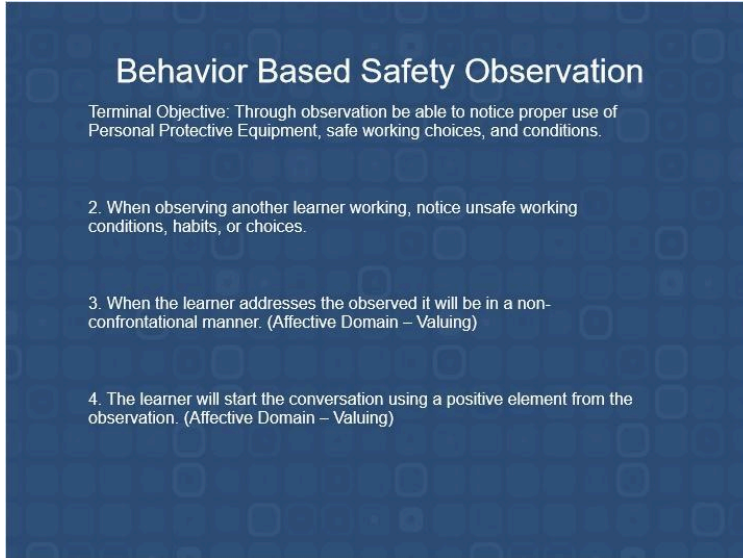
1.1 Behavior Based Safety Observation



Welcome to your behavior-based safety observation training online content.

This was developed by Marty Weninger

1.2 Behavior Based Safety Observation



Behavior Based Safety Observation

Terminal Objective: Through observation be able to notice proper use of Personal Protective Equipment, safe working choices, and conditions.

2. When observing another learner working, notice unsafe working conditions, habits, or choices.

3. When the learner addresses the observed it will be in a non-confrontational manner. (Affective Domain – Valuing)

4. The learner will start the conversation using a positive element from the observation. (Affective Domain – Valuing)

At the end of this lesson, you will be able to (Review the Objectives)

Complete a safety observation along with communicating with the individual that you have observed in a manner that will help them understand the safety issues involved with their actions.

1.3 Safety Story script

Voiced over

Safety Story script

In the early 2000's I was working as a sheet metal worker. I was on a jobsite working with Bill. Bill was working on the high side. This means that he was going up on the ladders and lifts to make the ductwork connections. I was working the ground. This meant that I was assembling the ductwork in longer sections to be lifted by a mechanical lift for Bill to make the connections in the air.

Bill was getting ready to go up on a ladder to seal the joints with caulk. He grabbed an eight foot ladder which meant that he need to stand on the top rung of the ladder to reach his work. "Bill don't be a fool standing on the top rung of the ladder is dangerous", I said. "Well by the time you get the ten foot ladder and set it up I will be done", Bill said as he was climbing the ladder.

Bill was reaching over a round duct to caulk the work just behind. Just as he did this his ladder shifted and he fell eight feet down landing on his left shoulder and head. He was knocked unconscious. I had just complete my Basic EMT training as a volunteer for the small town I live in. From this training I knew that Bill's injury was very bad. He was not moving, unresponsive, and making a grunting sound.

The St. Paul paramedics were called to the scene and Bill was transported to the hospital and diagnosed with a closed head injury. Bill was hospitalized for about 6 weeks. During this time he was going through therapy to help him regain his independence. At this time his doctor wanted to see if Bill might be able to return to work. This was a very difficult proposition for him and his wife. Because of his injury he was unable to drive. This meant that he either needed to get a ride to work from his wife or take the bus. If he took the bus he needed note cards telling him what busses to take to work and back home.

Once at work Bill had to be given one small instruction at a time because he had no short term memory because of the head injury. Bill Lasted only one week at work and was placed on permanent disability. He is unable to work to this day and still suffers headaches and short term memory loss.

His life was changed for ever and I just stood by and watched him fall off the ladder. I keep thinking to this day if I would have tried a different approach with him could I have prevented this from happening.

1.4 Case Study

Voiced over

Conversation Tools

- Start with a positive
 - Positive examples
 - "I see you are wearing the proper eye protection"
 - "Normally you are always so safety conscious why are you not..."
- Discuss the safety issue
 - You need to have you safety shoes on
 - You should not reach past the machine guarding
- follow with a positive
 - You are a hard worker you don't want to get injured and not be abl to come to work
- get the commitment of the individual to no longer work in the unsafe manner
 - Will you promise me that you will always work safely by wearing, doing, not doing, etc.

1.5 Case Study Choices

Voiced over

Case Study

You see your fellow worker working on a piece of electrical equipment. This equipment has not been properly locked out or tagged out. What would you do

Say nothing and walk away

Explain the dangers of not locking out the equipment and show them how to do this

Say "Man you are an idiot you are working on equipment like that"

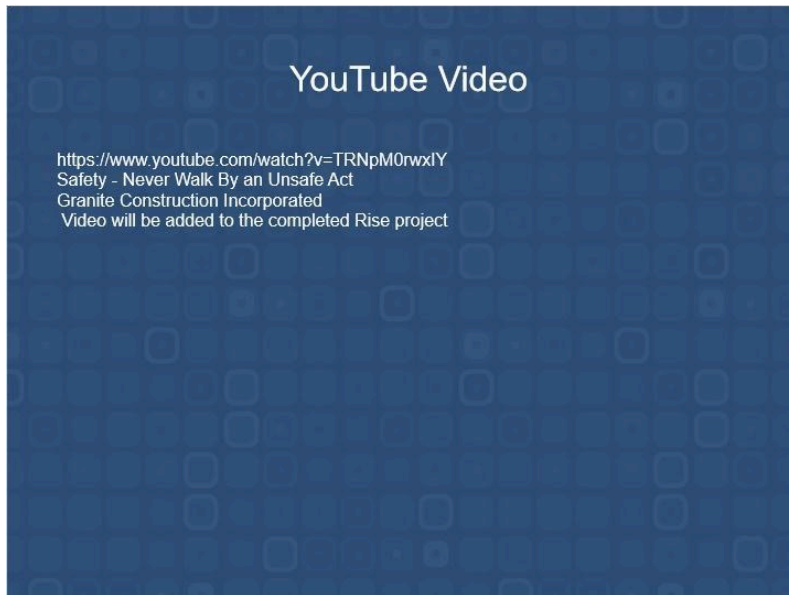
1.6 Outcome 3

Explain the dangers of not locking out the equipment and show them how to do this

This choice will flow back into the course completion.

When you address a co-worker or subordinate in a positive manner and show them that you care about their safety they will be more likely to listen to your suggestion and continue to work in this fashion.

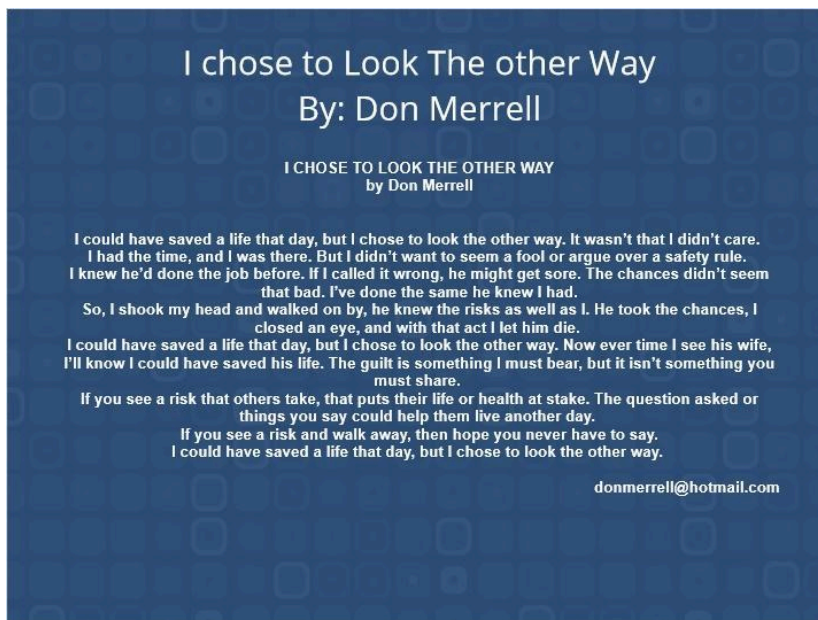
1.7 YouTube Video



1.8 I chose to Look The other Way

Voiced over

By: Don Merrell



2. Choice 1

2.1 Outcome 1

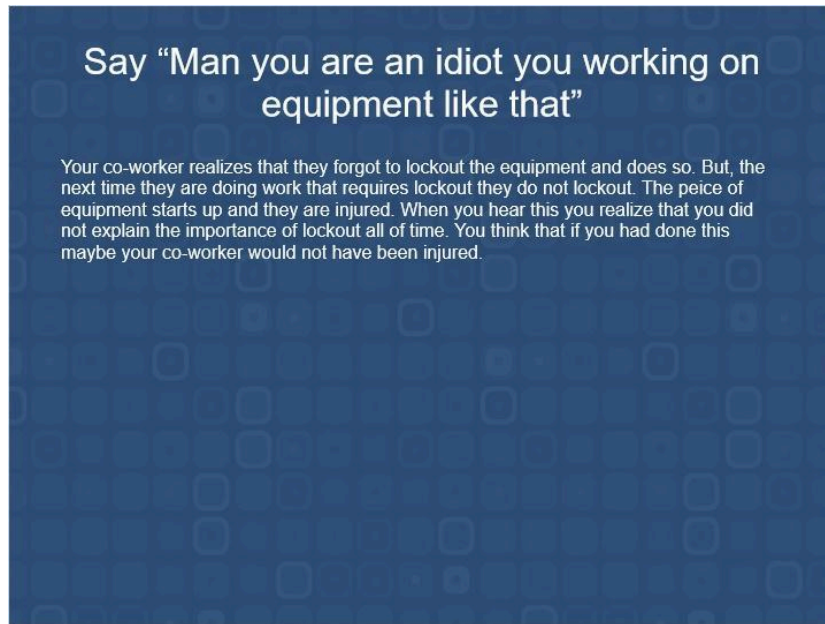
Say nothing and walk away

By doing this your co-worker did not know that they were in danger. They were electrocuted and passed away. You may have been able to stop this if you had said something and explained the danger that your co-worker was putting themselves in.

Go back and chose another option.

3. Choice 2

3.1 Outcome 2



4. Outcome Slides

4.1 Choice 1

Will return the learner to the case study to make a different choice

4.2 Choice 2

Will return the learner to the case study to make a different choice

4.3 Choice 3

Will allow the learner to continue with the RLO

5. Fonts

5.1 Fonts

We will be using Arial for all fonts

Headings will be bold

Text will be 12 point

Headings will be 24 point

5. Colors

5.1 Fonts

All fonts will be Either Charcoal Blue HEX: #1C243B or white depending on the background color

5.2 Background theme colors

Indigo HEX: 141E6e

Royal Blue HEX #0A4291

Manganese HEX: #0066B3

Azure HEX #007E

Aqua HEX #00B4A6